

# Corporate Data, Stock Information

(As of April 1, 2018)

## CORPORATE DATA

Corporate name	NH Foods Ltd.
Established	May 30, 1949
Capital	¥36,291 million
President	Yoshihide Hata
Employees (As of March 31, 2018)	30,655 (consolidated) 2,384 (non-consolidated) (including the average number of temporary employees)
Main businesses	<ul style="list-style-type: none"> <li>• Manufacture and sale of processed meats (hams and sausages, etc.) and cooked foods (retort-packed food, pre-prepared foods, etc.)</li> <li>• Breeding of livestock, and processing and sale of fresh meats</li> <li>• Production and sale of marine and dairy products</li> </ul>
Head office	BREEZE TOWER, 4-9, Umeda 2-chome, Kita-ku, Osaka 530-0001, Japan
Telephone	+81-6-7525-3026

## SHARE DATA (As of March 31, 2018)

Authorized shares	570,000,000
Issued and outstanding	214,991,609
Note: See our website for bios, positions, responsibilities, and important concurrent positions in our Securities Report for the Year Ended March 31, 2018 (Japanese only).	
Shareholders	19,430

### ● Major Shareholders (Leading 10 by Shareholding)

Name of Shareholders	Thousands of Shares
The Master Trust Bank of Japan, Ltd. (Trust account)	25,458
Japan Trustee Services Bank, Ltd. (Trust account)	15,205
The Hyakujushi Bank, Ltd.	7,537
Meiji Yasuda Life Insurance Company	7,354
The Norinchukin Bank	5,926
Nippon Life Insurance Company	5,570
The Bank of Tokyo-Mitsubishi UFJ, Ltd.	5,494
Sumitomo Mitsui Banking Corporation	4,650
STATE STREET BANK WEST CLIENT-TREATY 505234	4,632
Trust & Custody Services Bank, Ltd. (Securities investment trust account)	3,323

Notes: 1. In addition to the list above, NH Foods Ltd. holds 7 thousand shares of common stock.  
2. The Bank of Tokyo-Mitsubishi UFJ, Ltd. changed its name to MUFG Bank, Ltd. on April 1, 2018.

### ● Shareholders by Category

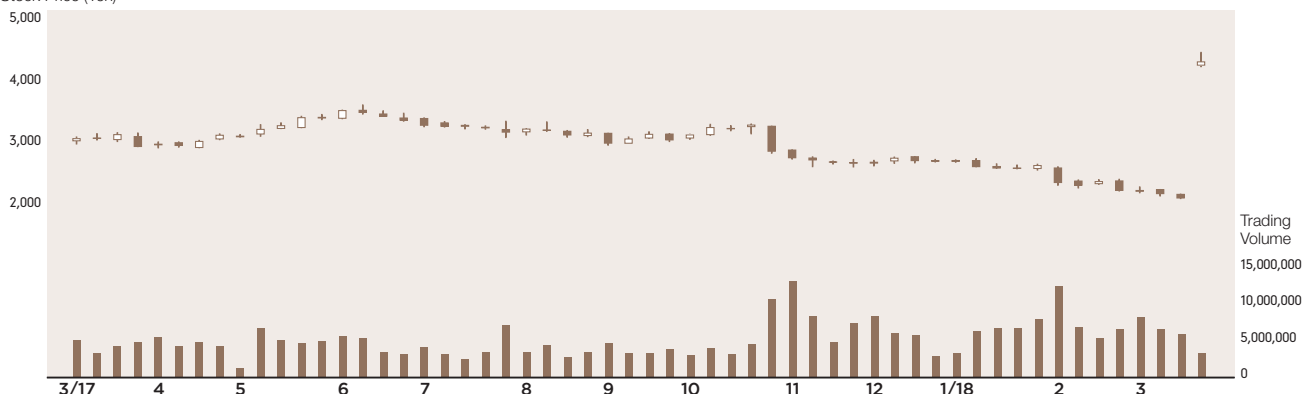
	Thousands of Shares	Shareholders
Financial institutions	117,299	(101)
Foreign investors	53,617	(515)
Individual/Other	29,910	(18,380)
Treasury stock	7	(1)
Other companies	7,796	(394)
Securities firms	6,359	(39)

### ● Shareholders by Holding

	Thousands of Shares	Shareholders
Less than 1,000	285	(2,090)
1,000 – Less than 10,000	23,853	(16,708)
10,000 – Less than 100,000	13,395	(473)
100,000 – Less than 1 million	36,132	(118)
1 million – Less than 5 million	68,778	(34)
5 million or more	72,546	(7)

## STOCK PRICE TREND

Stock Price (Yen)





<https://www.nipponham.co.jp/eng/>