

Corporate Data, Stock Information

(As of April 1, 2019)

CORPORATE DATA

Corporate name	NH Foods Ltd.
Established	May 30, 1949
Capital	¥36,294 million
President	Yoshihide Hata
Employees (As of March 31, 2019)	30,840 (consolidated) 2,403 (non-consolidated) (including the average number of temporary employees)
Main businesses	<ul style="list-style-type: none"> • Manufacture and sale of processed meats (hams and sausages, etc.) and cooked foods (retort-packed food, pre-prepared foods, etc.) • Breeding of livestock, and processing and sale of fresh meats • Production and sale of marine and dairy products
Head office	BREEZE TOWER, 4-9, Umeda 2-chome, Kita-ku, Osaka 530-0001, Japan
Telephone	+81-6-7525-3026

SHARE DATA (As of March 31, 2019)

Authorized shares	285,000,000
Issued and outstanding	102,958,904
Shareholders	26,181

● Major Shareholders (Leading 10 by Shareholding)

Name of Shareholders	Thousands of Shares
The Master Trust Bank of Japan, Ltd. (Trust account)	14,469
Japan Trustee Services Bank, Ltd. (Trust account)	6,242
The Hyakujushi Bank, Ltd.	3,768
Meiji Yasuda Life Insurance Company	3,677
The Norinchukin Bank	2,963
Nippon Life Insurance Company	2,785
MUFG Bank, Ltd.	2,747
Sumitomo Mitsui Banking Corporation	2,325
Trust & Custody Services Bank, Ltd. (Securities investment trust account)	1,908
Japan Trustee Services Bank, Ltd. (Trust account 5)	1,702

Note: In addition to the list above, NH Foods Ltd. holds 46 thousand shares of common stock.

● Shareholders by Category

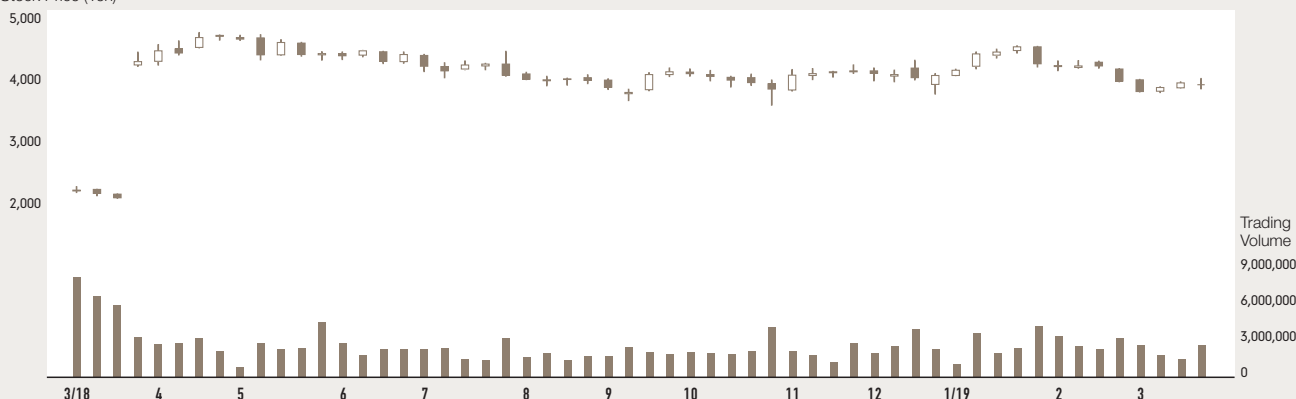
	Thousands of Shares	Shareholders
Financial institutions	58,193	(90)
Foreign investors	21,253	(507)
Individual/Other	14,846	(25,147)
Treasury stock	46	(1)
Other companies	3,819	(397)
Securities firms	4,800	(39)

● Shareholders by Holding

	Thousands of Shares	Shareholders
Less than 100	43	(1,362)
100 – Less than 1,000	7,442	(21,000)
1,000 – Less than 10,000	6,298	(3,478)
10,000 – Less than 100,000	7,461	(248)
100,000 – Less than 500,000	11,519	(55)
500,000 or more	70,192	(38)

STOCK PRICE TREND

Stock Price (Yen)



* As of April 1, 2018, NH Foods Ltd. carried out a share consolidation at a ratio of one share for each two shares of common stock.