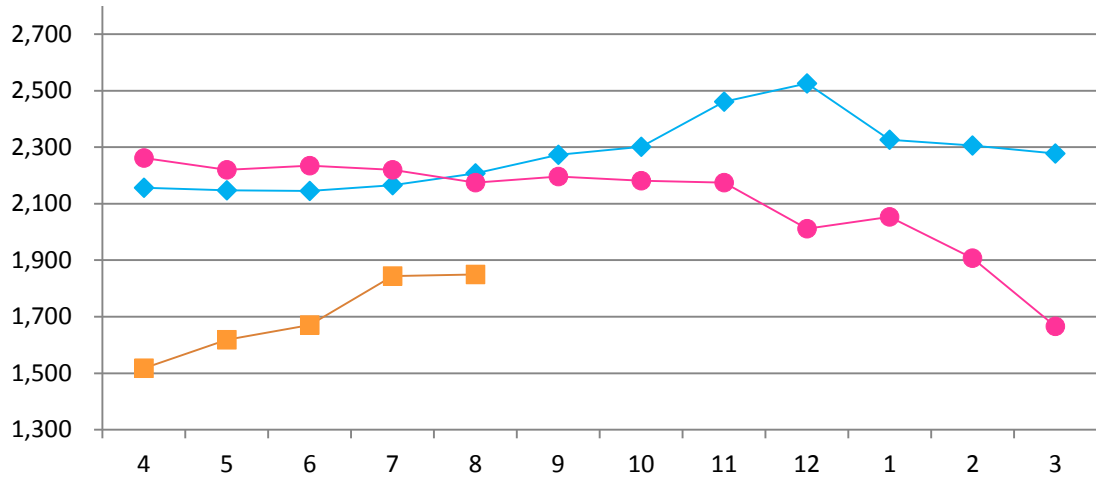


2020年8月度 市場動向資料集

August, 2020 Market Trends

日本ハム株式会社
NH Foods Ltd.
September, 25, 2020

【去勢和牛 A-3卸売価格(東京市場、税込)】
Tokyo Market A-3 Wagyu Steer Prices, Tax Included
(¥/kg)

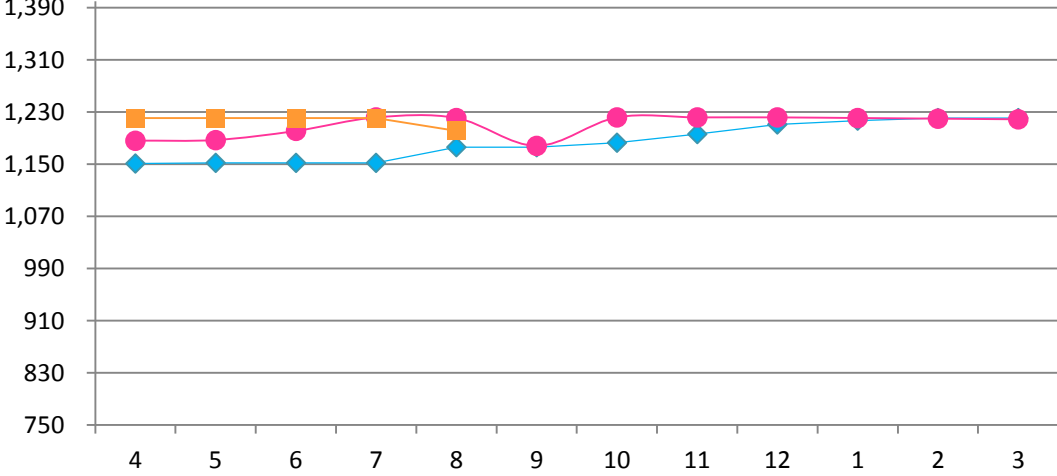


(¥/kg)

| 前期差 Comparison with the previous year | 前月差 Comparison with The previous month |
|---|--|
| -326 | 5 |

グラフ資料出所: 東京食肉市場株式会社
Date Source: Tokyo Meat Market Co. Ltd

【豪州産チルドビーフ ショートグレインフルセット価格】
Australian Chilled Beef [Full Set (Short Grain Fed)] Prices
(¥/kg)



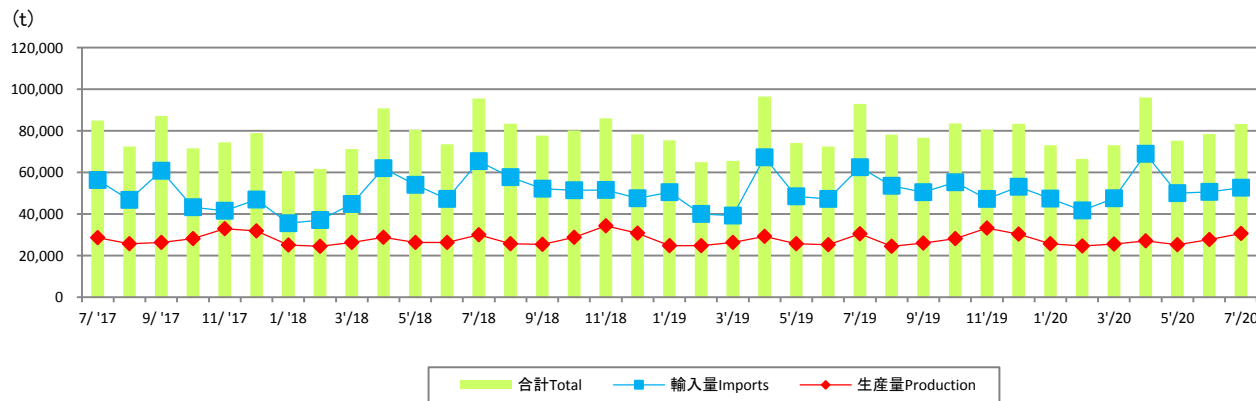
(¥/kg)

| 前期差 Comparison with the previous year | 前月差 Comparison with The previous month |
|---|--|
| -20 | -20 |

グラフ資料出所: 農畜産業振興機構(全て単純平均単価)
Date Source: Agriculture & Livestock Industries Corporation
(all graphs based on average prices)

【生産量と輸入量】

Production and Imports



グラフ資料出所: 農畜産業振興機構

Source: Agriculture & Livestock Industries Corporation

注: 数量は部分肉ベース。輸入量は煮沸肉並びにくず肉のうちほほ肉及び頭肉のみ含む。

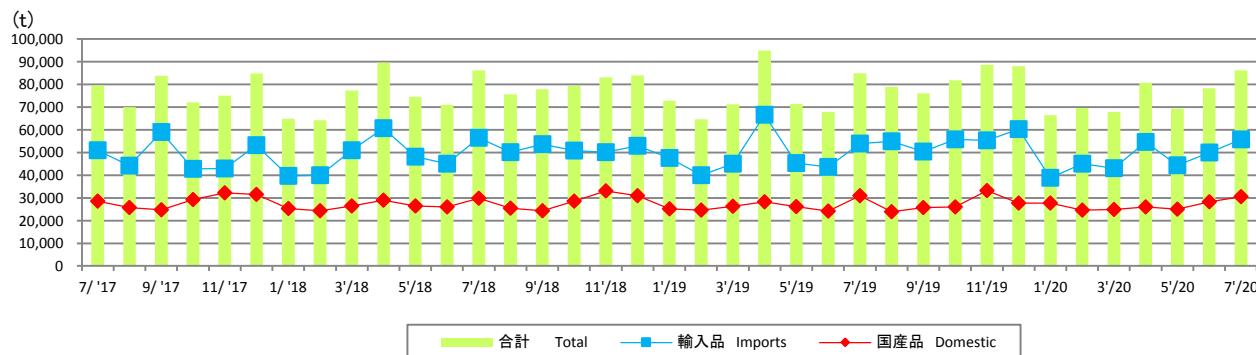
Notes: 1. Boneless cuts equivalent

2. Figures for stocks are estimated by ALIC

| | 前期差 Comparison with The previous year | 前月差 Comparison with The previous month |
|-------------------|---|--|
| 輸入量 Imports | -9,891 | 1,931 |
| 生産量 Production | 154 | 2,835 |

【推定出回り量】

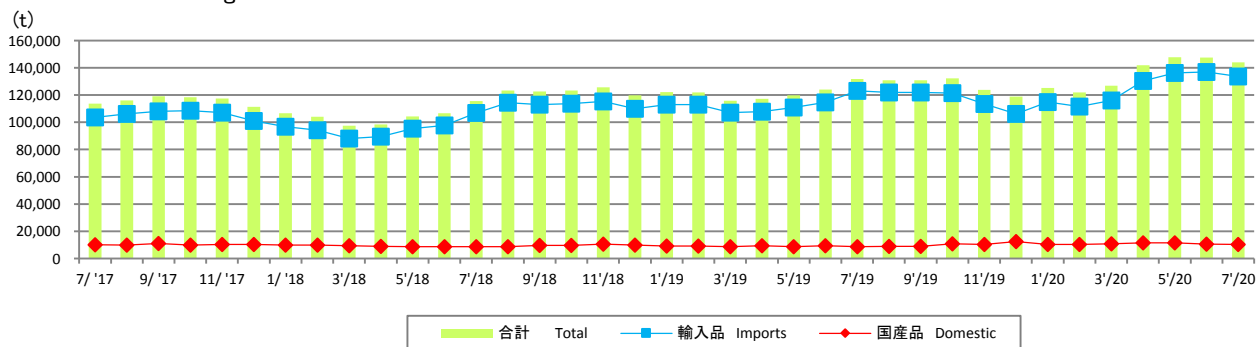
Estimated Marketing Quantity



| | 前期差 Comparison with The previous year | 前月差 Comparison with The previous month |
|-----------------|---|--|
| 輸入品 Imports | 1,788 | 5,683 |
| 国産品 Domestic | -494 | 2,164 |

【推定期末在庫】

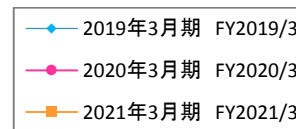
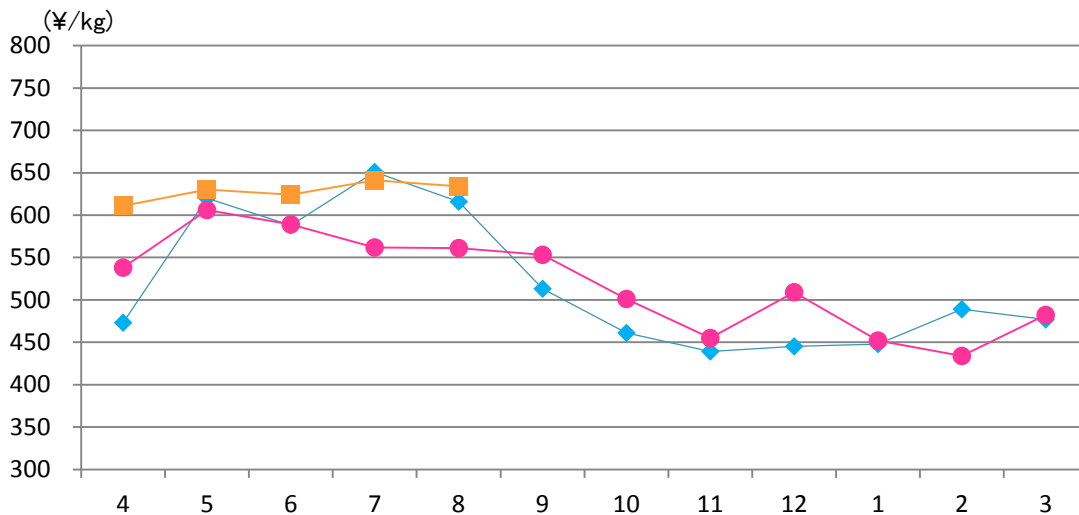
Estimated Ending Stock



| | 前期差 Comparison with The previous year | 前月差 Comparison with The previous month |
|-----------------|---|--|
| 輸入品 Imports | 10,550 | -3,108 |
| 国産品 Domestic | 1,628 | -269 |

【豚肉枝肉卸売価格 上物 東京食肉市場平均価格 税込】

Pork Carcass Prices (Tokyo Market Excellent Grade, monthly average, Tax Included)



(¥/kg)

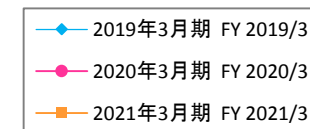
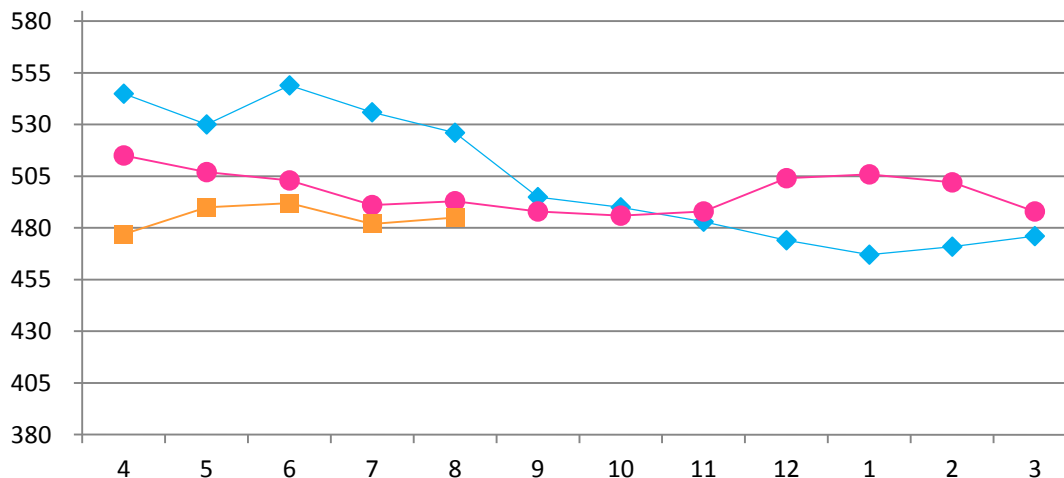
| 前期差 Comparison with the previous year | 前月差 Comparison with The previous month |
|---|--|
| 73 | -7 |

グラフ資料出所: 東京食肉市場株式会社
Date Source: Tokyo Meat Market Co. Ltd

【U.S.冷凍ウデ(英名:ピクニック)価格】

U.S. Frozen Pork (Picnic) Prices

(¥/kg)



(¥/kg)

| 前期差 Comparison with the previous year | 前月差 Comparison with The previous month |
|---|--|
| -8 | 3 |

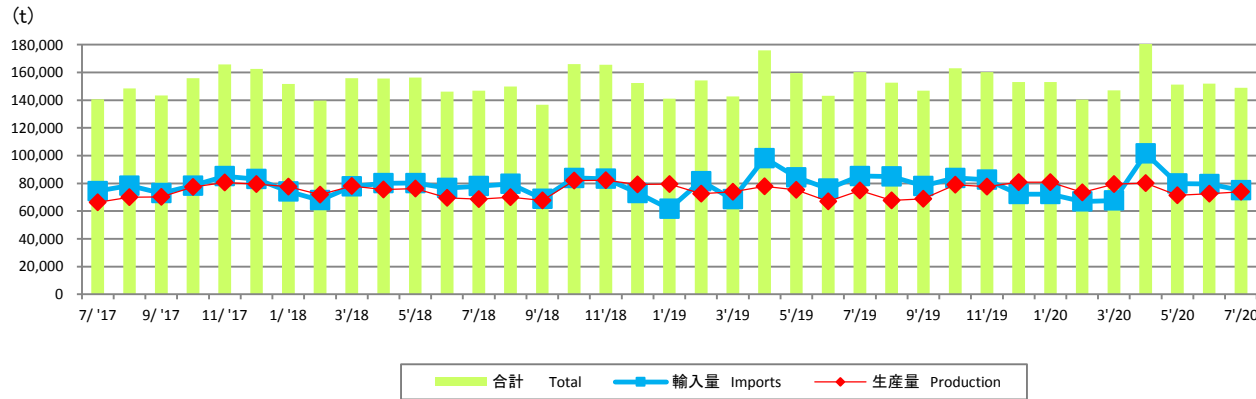
グラフ資料出所: 農畜産業振興機構(全て単純平均単価)
Date Source: Agriculture & Livestock Industries Corporation
(all graphs based on average prices)

豚肉需給量推移 / Pork Supply and Demand Trends

Copyright (C) 2015 NH Foods Ltd. All rights reserved.

【生産量と輸入量】

Production and Imports



グラフ資料出所: 農畜産業振興機構

Source: Agriculture & Livestock Industries Corporation

注: 数量は部分肉ベース。輸入量は煮沸肉並びにくず肉のうちほほ肉及び頭肉のみ含む。

Notes: 1. Boneless cuts equivalent

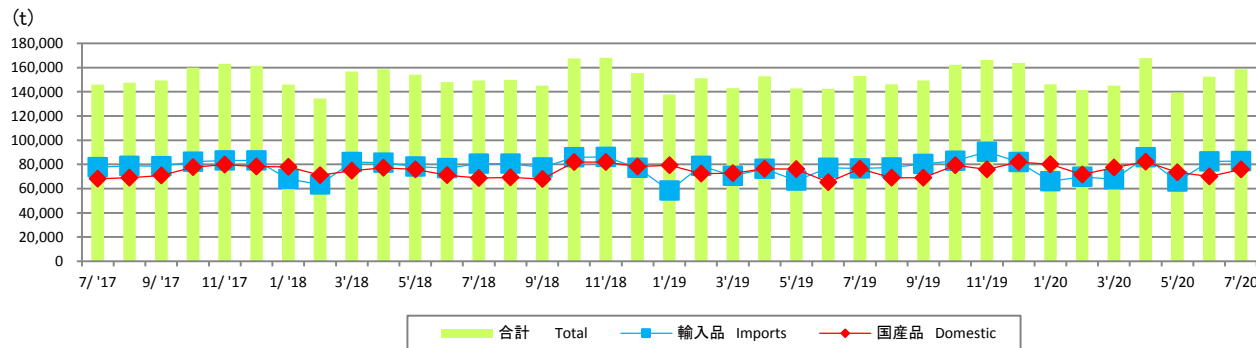
2. Figures for stocks are estimated by ALIC

(t)

| | 前期差 Comparison with The previous year | 前月差 Comparison with The previous month |
|-------------------|---|--|
| 輸入量 Imports | -10,304 | -4,511 |
| 生産量 Production | -932 | 1,432 |

【推定出回り量】

Estimated Marketing Quantity

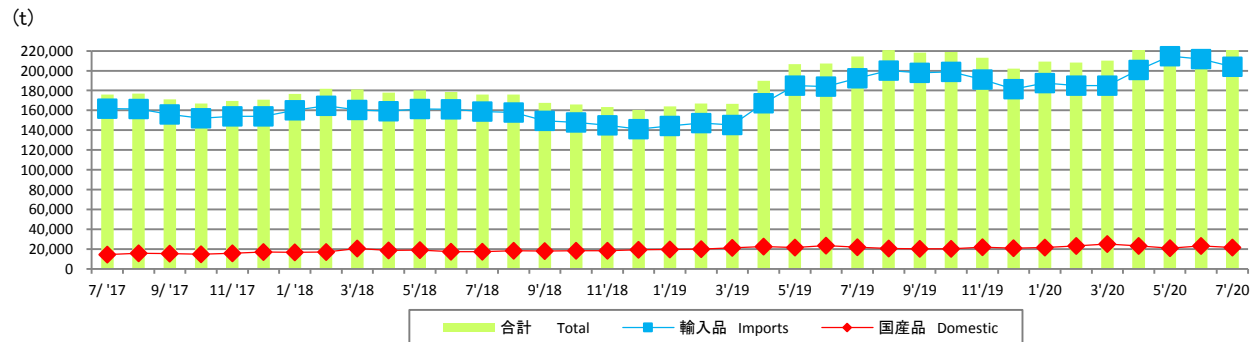


(t)

| | 前期差 Comparison with The previous year | 前月差 Comparison with The previous month |
|-----------------|---|--|
| 輸入品 Imports | 6,066 | 261 |
| 国産品 Domestic | -640 | 5,677 |

【推定期末在庫】

Estimated Ending Stock

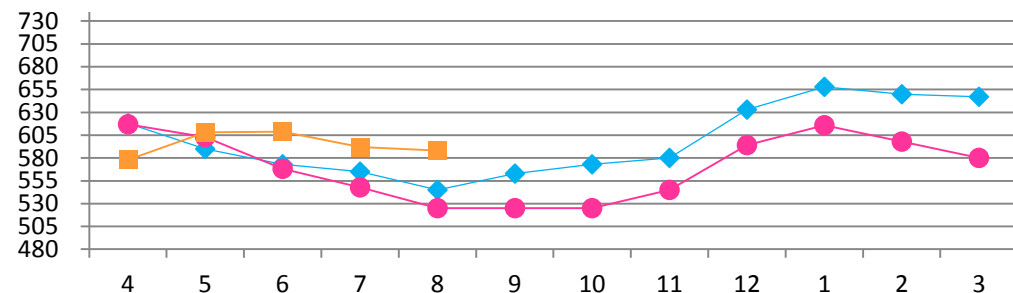


(t)

| | 前期差 Comparison with The previous year | 前月差 Comparison with The previous month |
|-----------------|---|--|
| 輸入品 Imports | 11,543 | -7,791 |
| 国産品 Domestic | -450 | -1,830 |

【鶏肉卸売価格(モモ肉、税抜)】

Domestic Chicken Thigh Meat Wholesale Prices
(¥/kg)



グラフ資料出所: 食品産業新聞社畜産日報掲載分から単純平均単価

Date Source: "DAILY MEAT & LIVESTOCK"

which is a trade business paper published in Japan(all graphs based on Average Price)

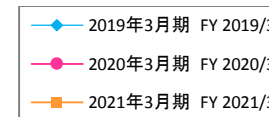
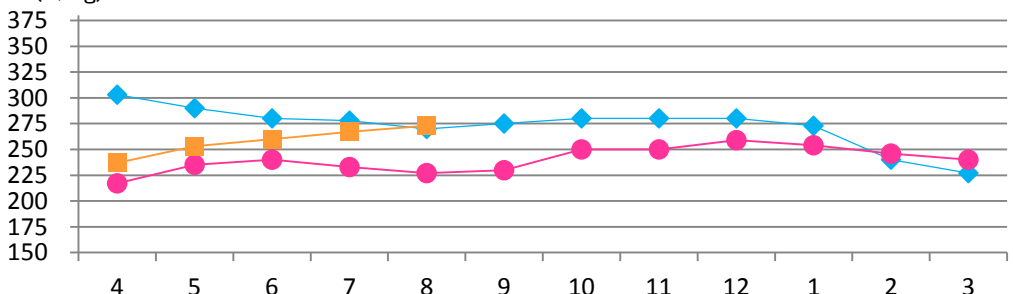


(¥/kg)

| 前期差 Comparison with the previous year | 前月差 Comparison with The previous month |
|---|--|
| 63 | -4 |

【鶏肉卸売価格(ムネ肉、税抜)】

Domestic Chicken Breast Meat Wholesale Prices
(¥/kg)

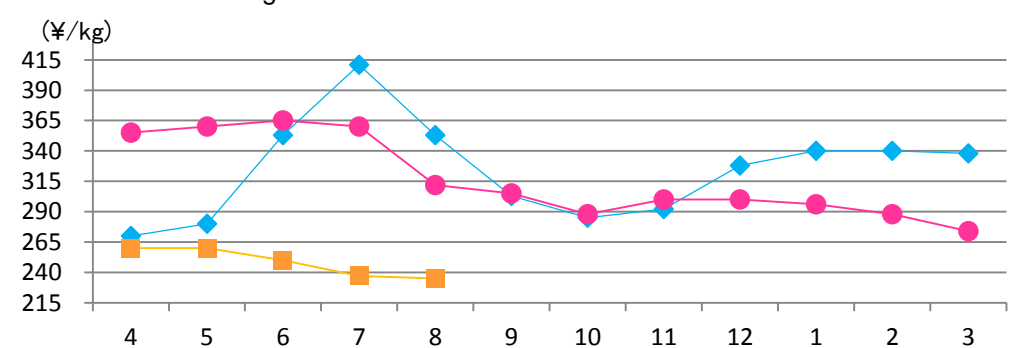


(¥/kg)

| 前期差 Comparison with the previous year | 前月差 Comparison with The previous month |
|---|--|
| 46 | 6 |

【ブラジル産もも肉価格】

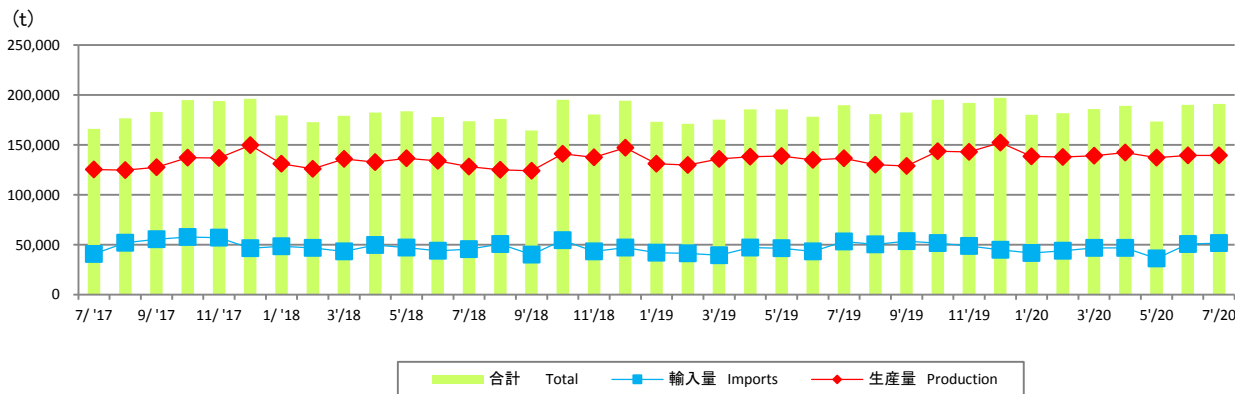
Brazilian Chicken Thigh Prices
(¥/kg)



(¥/kg)

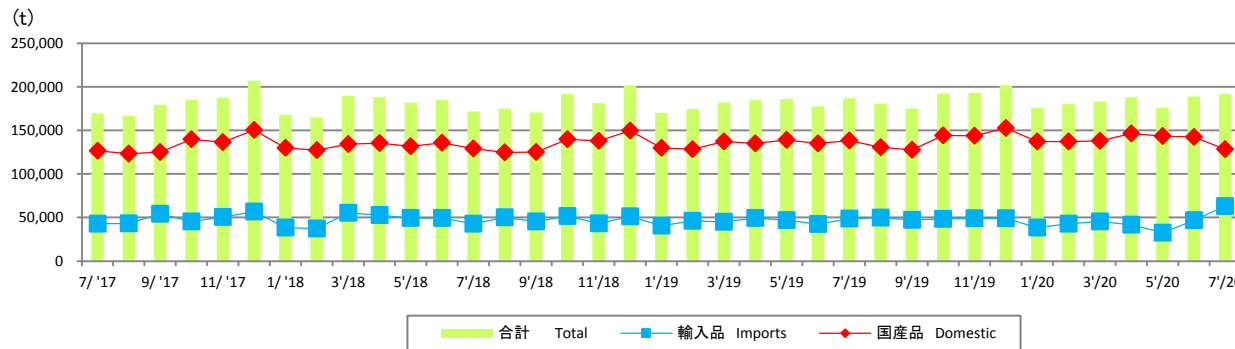
| 前期差 Comparison with the previous year | 前月差 Comparison with The previous month |
|---|--|
| -77 | -2 |

【生産量と輸入量】 Production and Imports



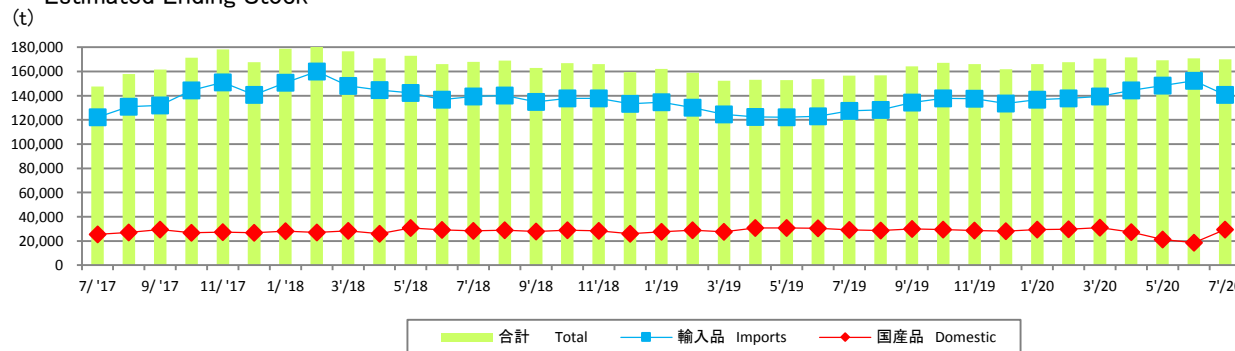
■ 合計 Total ■ 輸入量 Imports ◆ 生産量 Production

【推定出回り量】 Estimated Marketing Quantity



■ 合計 Total ■ 輸入品 Imports ◆ 国産品 Domestic

【推定期末在庫】 Estimated Ending Stock



■ 合計 Total ■ 輸入品 Imports ◆ 国産品 Domestic

グラフ資料出所: 農畜産業振興機構

Source: Agriculture & Livestock Industries Corporation

注: 生産量は骨付き肉ベース。成鶏肉を含む。輸入量には鶏肉以外の家禽肉を含まない。

注: 生産量、国産品の推定出回り量は2010年2月をもって公表終了。

Notes: 1. *Bone in cuts equivalent

2. Figures for stocks are estimated by ALIC

3. *The production quantity and the estimated marketing quantity on the domestic one are made public only until February,2010.

| | 前期差 Comparison with The previous year | 前月差 Comparison with The previous month |
|-------------------|---|--|
| 輸入量 Imports | -1,634 | 925 |
| 生産量 Production | 2,785 | -193 |

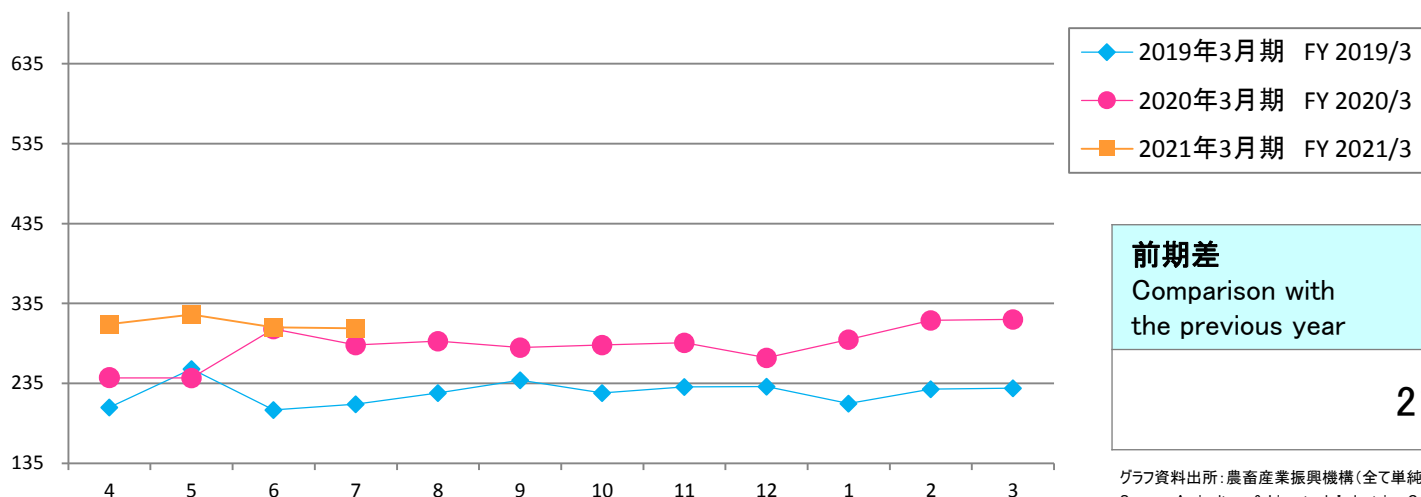
| | 前期差 Comparison with The previous year | 前月差 Comparison with The previous month |
|-----------------|---|--|
| 輸入品 Imports | 14,520 | 16,503 |
| 国産品 Domestic | -9,717 | -13,716 |

| | 前期差 Comparison with The previous year | 前月差 Comparison with The previous month |
|-----------------|---|--|
| 輸入品 Imports | 13,062 | -11,607 |
| 国産品 Domestic | 477 | 10,970 |

【脱脂粉乳輸入価格(CIF)】

Skim milk (CIF ALIC purchase price)

(¥/kg)



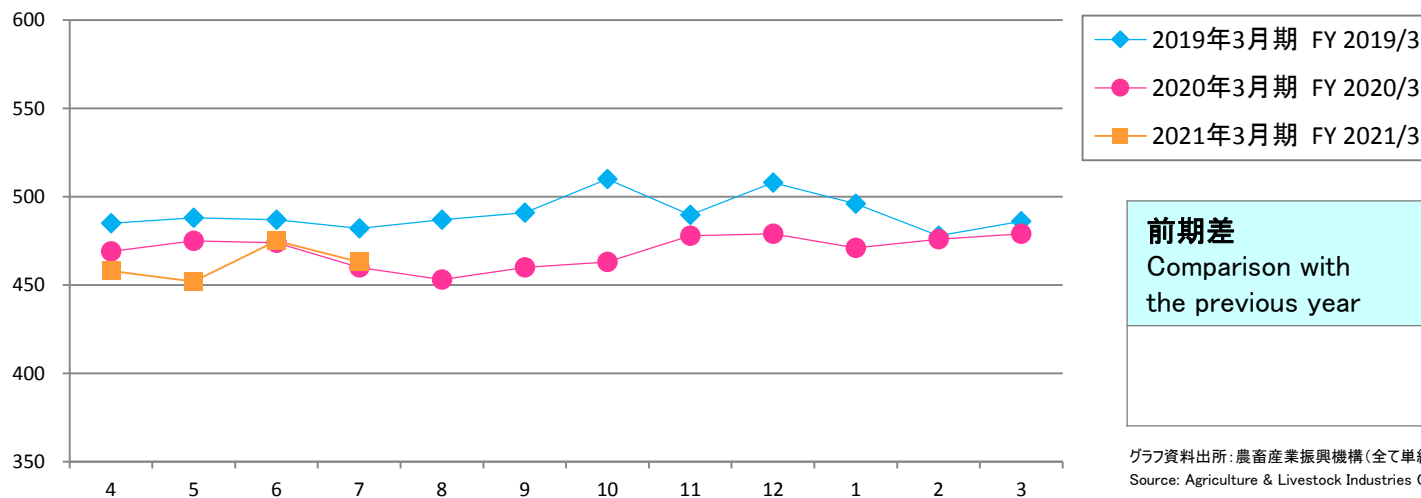
| 前期差 Comparison with the previous year | 前月差 Comparison with The previous month |
|---|--|
| 21 | -1 |

グラフ資料出所: 農畜産業振興機構(全て単純平均単価)
Source: Agriculture & Livestock Industries Corporation (all graphs based on average prices)

【ナチュラルチーズ輸入価格】

Natural cheese (CIF)

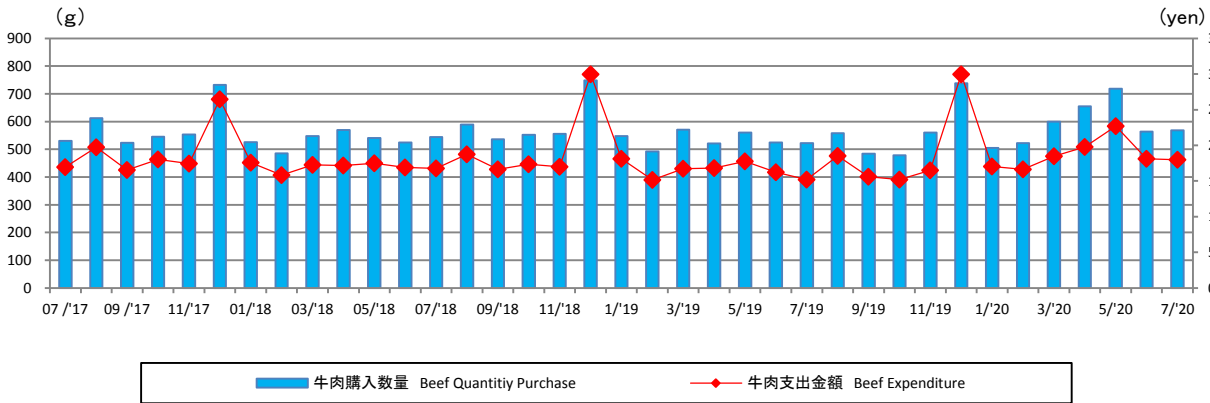
(¥/kg)



| 前期差 Comparison with the previous year | 前月差 Comparison with The previous month |
|---|--|
| 3 | -12 |

グラフ資料出所: 農畜産業振興機構(全て単純平均単価)
Source: Agriculture & Livestock Industries Corporation (all graphs based on average prices)

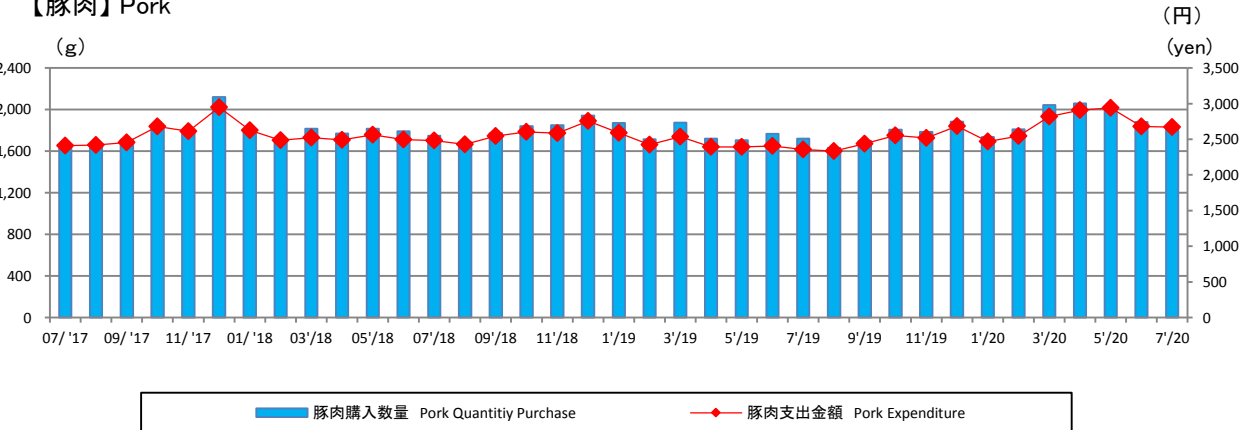
【牛肉】 Beef



グラフ資料出所: 総務省「家計調査」
 Source: Ministry of Internal Affairs and Communications "Family Income and Expenditure Survey"
 二人以上の世帯(農林漁家世帯を除く)
 Two-or-more-person Households (Not including agricultural, forestry and fisheries households)

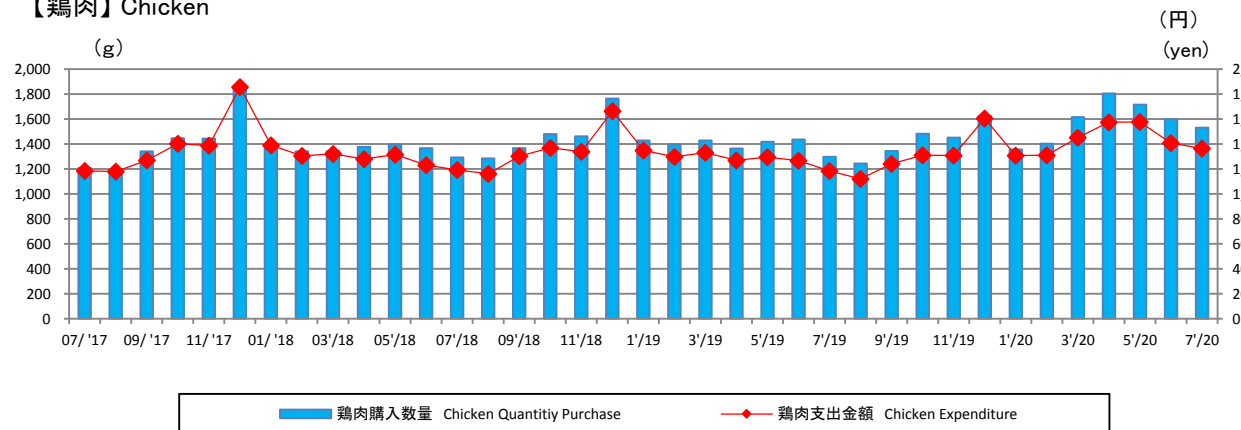
| | 前期差 Comparison with The previous year | 前月差 Comparison with The previous month |
|------------------------------------|---|--|
| 購入数量(g) Quantity Purchase(g) | 47 | 5 |
| 支出金額(円) Expenditure (yen) | 279 | -14 |

【豚肉】 Pork



| | 前期差 Comparison with The previous year | 前月差 Comparison with The previous month |
|------------------------------------|---|--|
| 購入数量(g) Quantity Purchase(g) | 125 | -36 |
| 支出金額(円) Expenditure (yen) | 313 | -7 |

【鶏肉】 Chicken

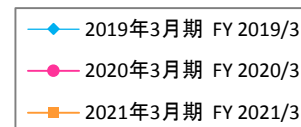
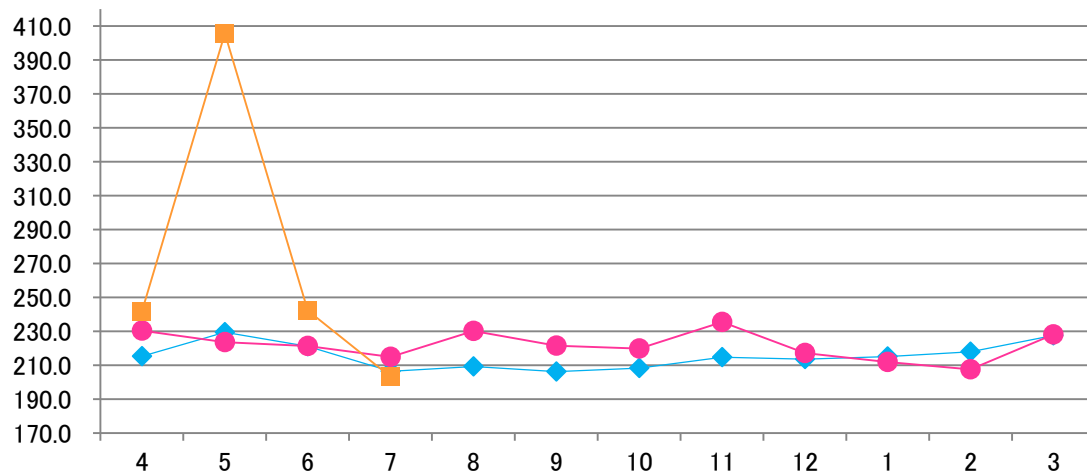


| | 前期差 Comparison with The previous year | 前月差 Comparison with The previous month |
|------------------------------------|---|--|
| 購入数量(g) Quantity Purchase(g) | 232 | -69 |
| 支出金額(円) Expenditure (yen) | 179 | -44 |

【米国産 牛肉カットアウトバリュー 枝肉ベース】

U.S. Beef Boxed cutout, Choice 1-3, 600-900 lbs

(ドル/100ポンド)
(US \$/cwt)



(ドル/100ポンド)
(US \$/cwt)

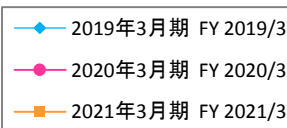
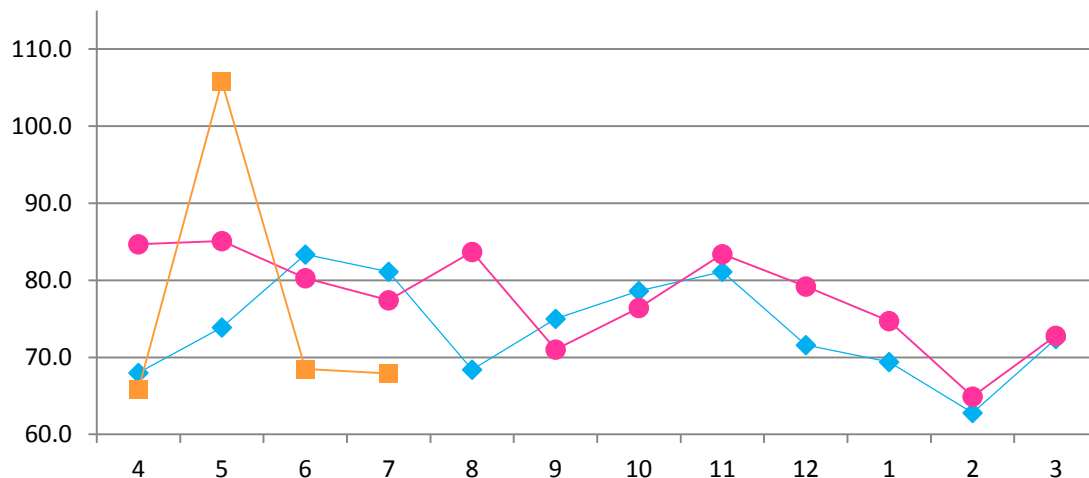
| 前期差 Comparison with the previous year | 前月差 Comparison with The previous month |
|---|--|
| -11.6 | -39.1 |

グラフ資料出所: 米国食肉輸出連合会
Source: U.S. Meat Export Federation

【米国産 豚肉カットアウトバリュー 枝肉ベース】

U.S. Pork Cutout composite carcass, 53-54% lean

(ドル/100ポンド)
(US \$/cwt)



(ドル/100ポンド)
(US \$/cwt)

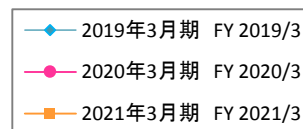
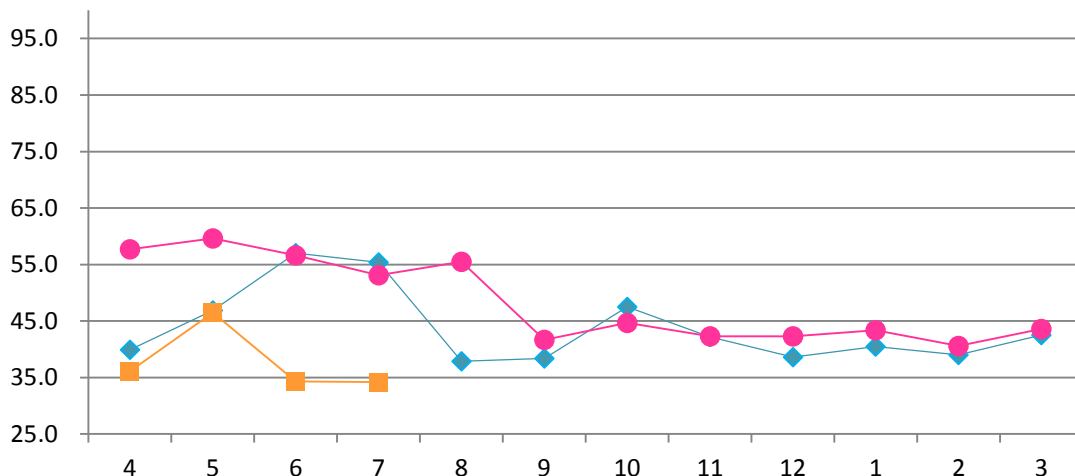
| 前期差 Comparison with the previous year | 前月差 Comparison with The previous month |
|---|--|
| -9.5 | -0.6 |

グラフ資料出所: 米国食肉輸出連合会
Source: U.S. Meat Export Federation

【米国産 肥育豚価格(生産者販売価格)】

Live U.S. Fattening Pig Prices (Pig Sales Price)

(セント/ポンド)
(US ¢/lb)



(セント/ポンド)
(US ¢/lb)

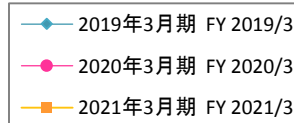
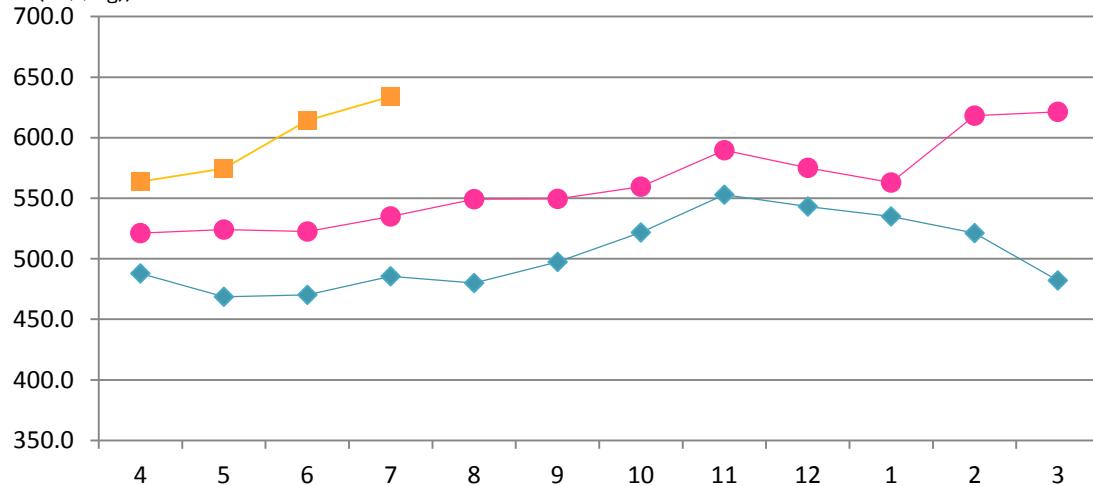
| 前期差 Comparison with the previous year | 前月差 Comparison with The previous month |
|---|--|
| -18.9 | -0.1 |

グラフ資料出所: 農畜産業振興機構 (全て単純平均単価)
Source: Agriculture & Livestock Industries Corporation (all graphs based on average prices)

【豪州産 肥育牛価格(生産者販売価格)】

Live Australian Fattening Cattle Prices (Cattle Sales Price)

(豪セント/kg)
(A ¢/kg)

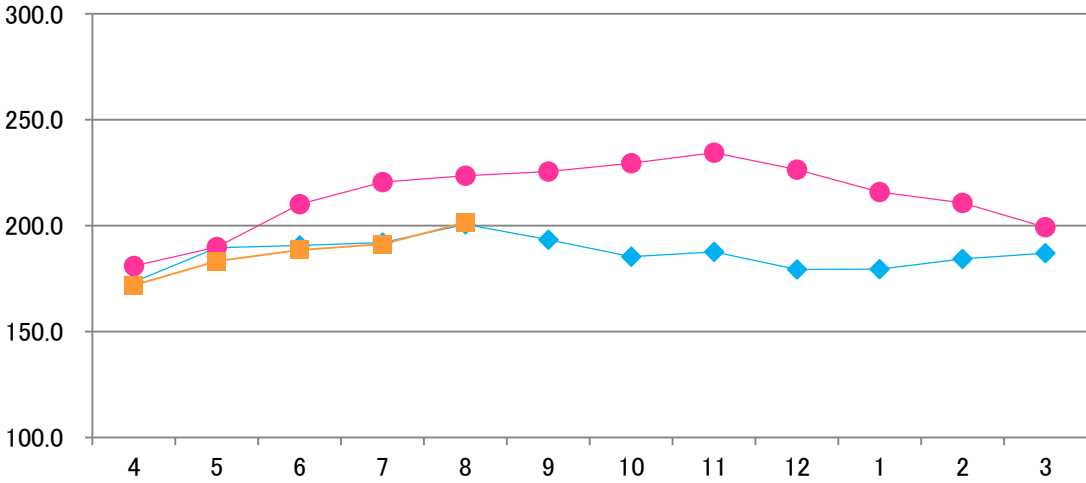


(豪セント/kg)
(A ¢/kg)

| 前期差 Comparison with the previous year | 前月差 Comparison with The previous month |
|---|--|
| 99.0 | 19.7 |

グラフ資料出所: 農畜産業振興機構 (全て単純平均単価)
Source: Agriculture & Livestock Industries Corporation (all graphs based on average prices)

【ウルグアイ 牛価格 生体ベース】
 Uruguay cattle prices, >380kg
 (ドル/100kg)
 (US \$/lwt)



◆ 2019年3月期 FY 2019/3
 ● 2020年3月期 FY 2020/3
 ■ 2021年3月期 FY 2021/3

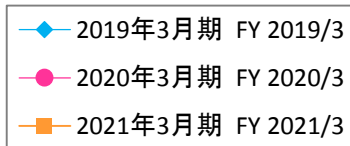
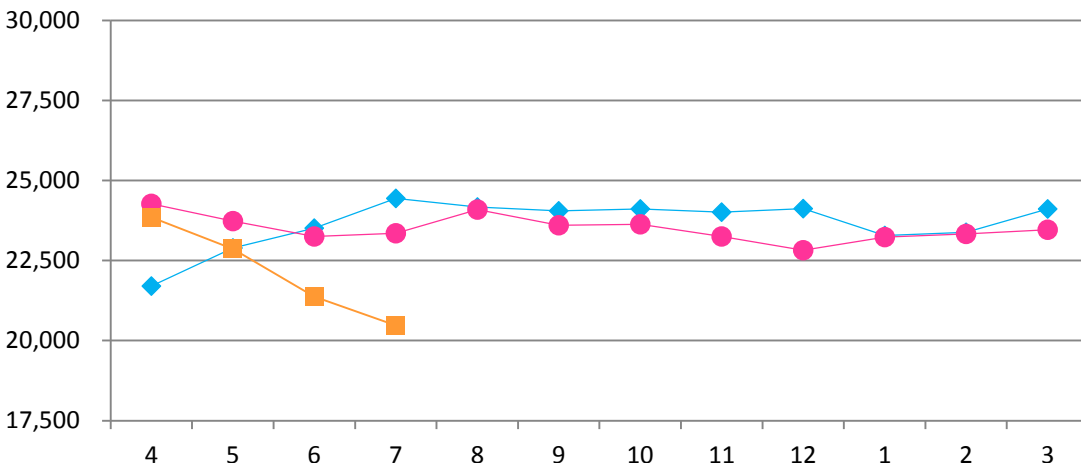
| (ドル/100kg) (US \$/lwt) | |
|---|--|
| 前期差 Comparison with the previous year | 前月差 Comparison with The previous month |
| -22.1 | 10.1 |

グラフ資料出所: 豪州食肉家畜生産者事業団
 Source: Meat & Livestock Australia Ltd

【とうもろこしの輸入価格】

Imported Corn Prices

(円/トン)
(¥/t)



(円/トン)
(¥/t)

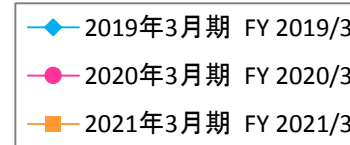
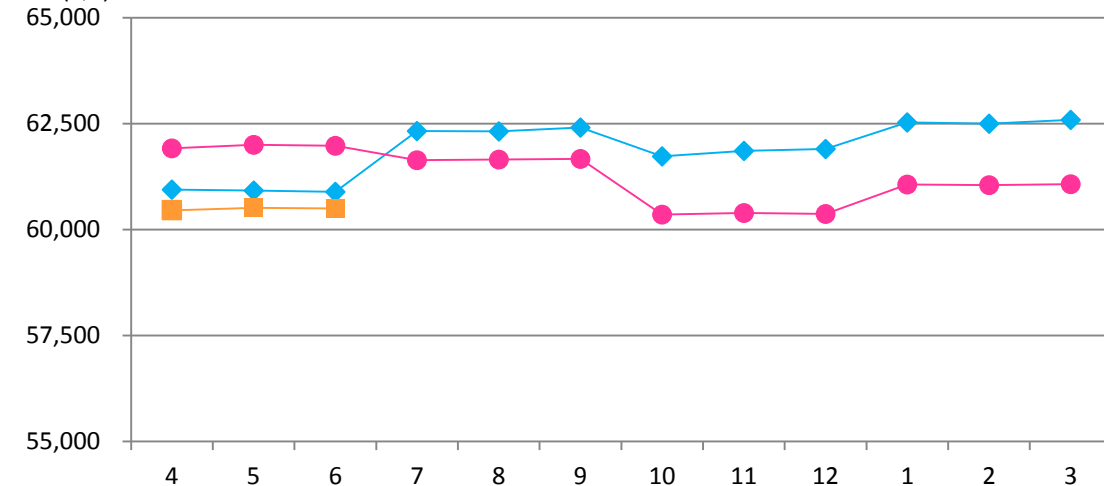
| 前期差 Comparison with the previous year | 前月差 Comparison with The previous month |
|---|--|
| -2,884 | -904 |

グラフ資料出所: 農畜産業振興機構 (全て単純平均単価)
Source: Agriculture & Livestock Industries Corporation (all graphs based on average prices)

【配合飼料の価格】

Mixed Feed Prices

(円/トン)
(¥/t)



(円/トン)
(¥/t)

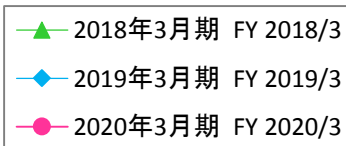
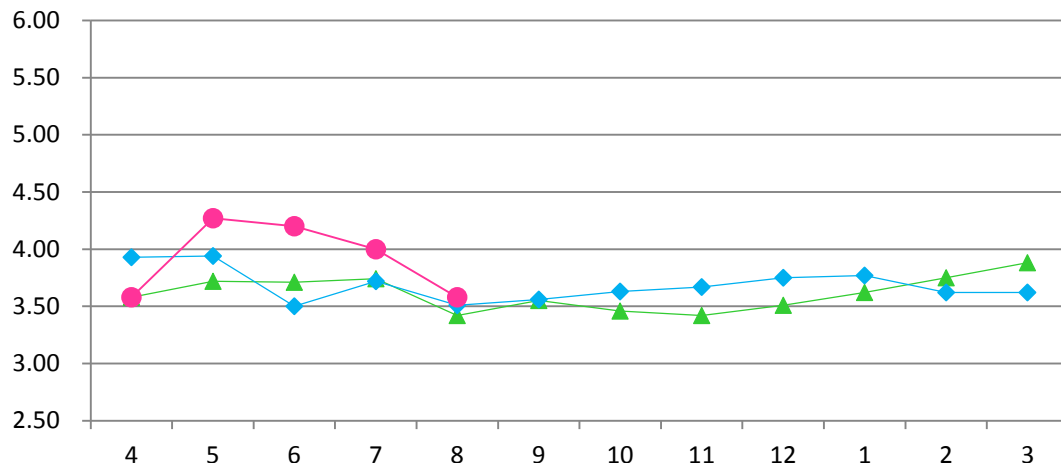
| 前期差 Comparison with the previous year | 前月差 Comparison with The previous month |
|---|--|
| -1,484 | -18 |

グラフ資料出所: 農畜産業振興機構 (全て単純平均単価)
Source: Agriculture & Livestock Industries Corporation (all graphs based on average prices)

【シカゴ商品取引所とうもろこし先物相場価格】

CBOT corn futures market price

(ドル/ブッシェル)
(dollar/bushel)



(ドル/ブッシェル)
(dollar/bushel)

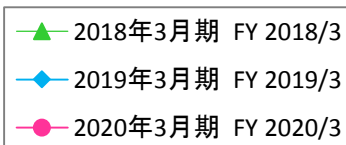
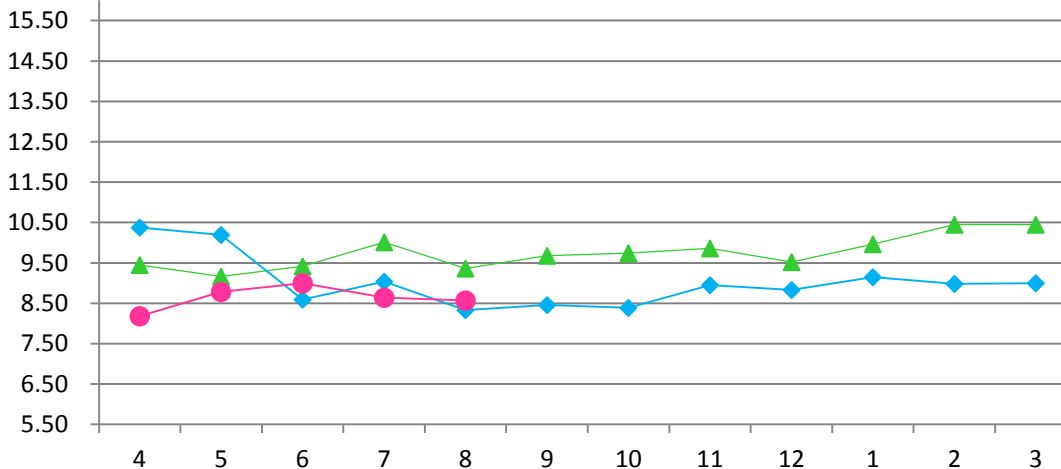
| 前期差 Comparison with the previous year | 前月差 Comparison with The previous month |
|---|--|
| 0.07 | -0.42 |

グラフ資料出所: 農畜産業振興機構(月末時点での期近の終値)
Source: Agriculture & Livestock Industries Corporation (The latest closing price as of the end of the month)

【シカゴ商品取引所大豆先物相場価格】

CBOT soybean futures market price

(ドル/ブッシェル)
(dollar/bushel)



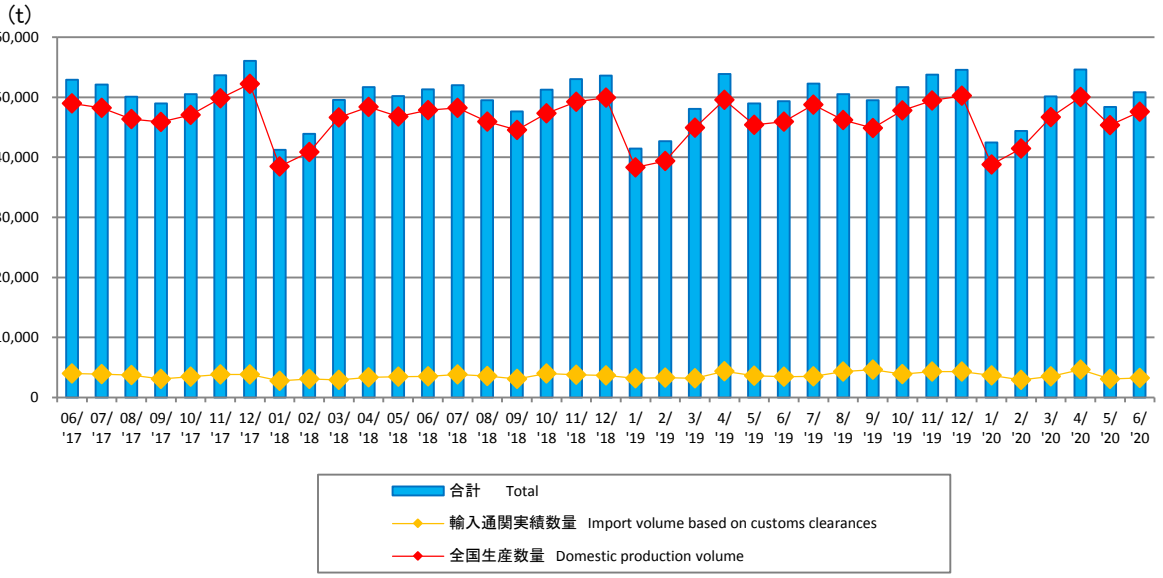
(ドル/ブッシェル)
(dollar/bushel)

| 前期差 Comparison with the previous year | 前月差 Comparison with The previous month |
|---|--|
| 0.24 | -0.07 |

グラフ資料出所: 農畜産業振興機構(月末時点での期近の終値)
Source: Agriculture & Livestock Industries Corporation (The latest closing price as of the end of the month)

【ハム・ソーセージ全国生産数量・輸入通関実績数量】

Production and Import Volume Based on Customs Clearances for Hams and Sausages

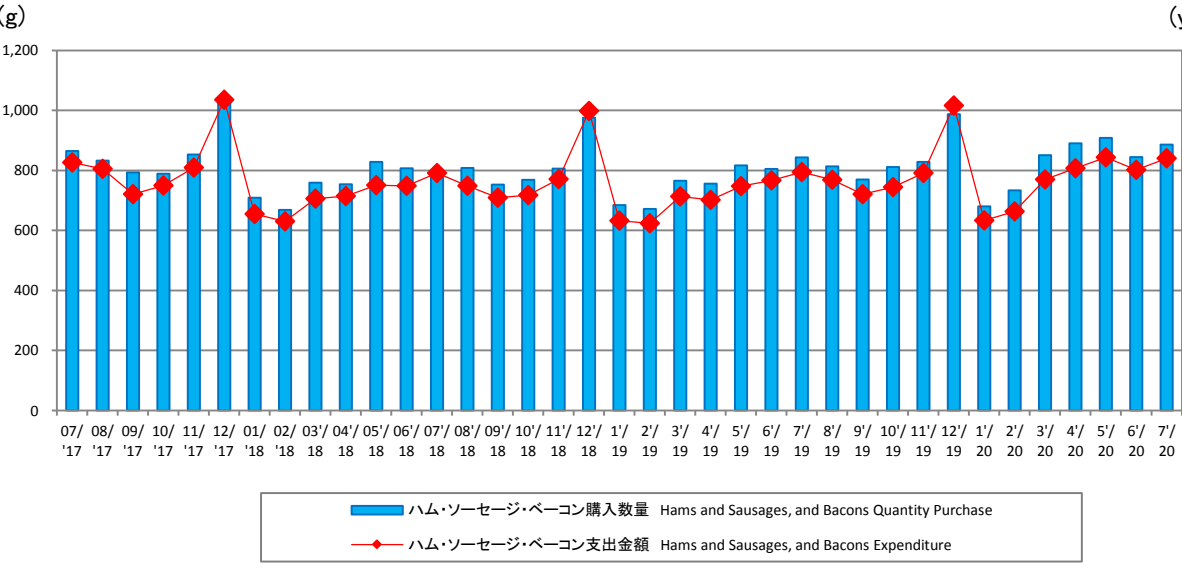


グラフ資料出所: 日本食肉加工協会
Source: Japan Meat Processor Association

| | 前期比 Comparison with The previous year | 前月比 Comparison with The previous month |
|--------------------|---|--|
| 輸入量 Imports | -5.7 | 6.5 |
| 生産数量 Production | 3.7 | 5.0 |
| 合計 Total | 3.0 | 5.1 |

【家計調査 ハム・ソーセージ・ベーコン購入数量/支出金額】

Family Income and Expenditure Survey for Hams and Sausages, and Bacons



グラフ資料出所: 総務省「家計調査」
Source: Ministry of Internal Affairs and Communications "Family Income and Expenditure Survey"
二人以上の世帯(農林漁家世帯を除く)
Two-or-more-person Households (Not including agricultural, forestry and fisheries households)

| | 前期差 Comparison with The previous year | 前月差 Comparison with The previous month |
|------------------------------------|---|--|
| 購入数量(g) Quantity Purchase(g) | 43 | 41 |
| 支出金額(円) Expenditure (yen) | 77 | 64 |

○牛肉相場(P2)

去勢和牛 A-3 (東京市場、税込、円/KG)

出所:東京食肉市場株式会社

| | 4月 | 5月 | 6月 | 7月 | 8月 | 9月 | 10月 | 11月 | 12月 | 1月 | 2月 | 3月 | 年度平均 |
|----------|-------|-------|-------|-------|-------|-------|-------|-------|-------|-------|-------|-------|-------|
| 2019年3月期 | 2,157 | 2,147 | 2,145 | 2,166 | 2,208 | 2,273 | 2,301 | 2,461 | 2,526 | 2,326 | 2,306 | 2,278 | 2,275 |
| 2020年3月期 | 2,262 | 2,220 | 2,235 | 2,220 | 2,175 | 2,196 | 2,181 | 2,175 | 2,011 | 2,053 | 1,907 | 1,666 | 2,108 |
| 2021年3月期 | 1,518 | 1,618 | 1,671 | 1,844 | 1,849 | | | | | | | | 1,700 |

豪州チルドビーフ ショートグレインフルセット(円/KG)

出所:農畜産業振興機構(全て単純平均単価)

| | 4月 | 5月 | 6月 | 7月 | 8月 | 9月 | 10月 | 11月 | 12月 | 1月 | 2月 | 3月 | 年度平均 |
|----------|-------|-------|-------|-------|-------|-------|-------|-------|-------|-------|-------|-------|-------|
| 2019年3月期 | 1,151 | 1,152 | 1,152 | 1,152 | 1,176 | 1,176 | 1,183 | 1,196 | 1,211 | 1,217 | 1,221 | 1,221 | 1,184 |
| 2020年3月期 | 1,186 | 1,187 | 1,201 | 1,222 | 1,221 | 1,178 | 1,222 | 1,222 | 1,222 | 1,221 | 1,220 | 1,219 | 1,210 |
| 2021年3月期 | 1,221 | 1,221 | 1,221 | 1,221 | 1,201 | | | | | | | | 1,217 |

○豚肉相場(P4)

豚肉枝肉卸売価格 上物 東京市場平均価格、税込(円/KG)

出所:東京食肉市場株式会社

| | 4月 | 5月 | 6月 | 7月 | 8月 | 9月 | 10月 | 11月 | 12月 | 1月 | 2月 | 3月 | 年度平均 |
|----------|-----|-----|-----|-----|-----|-----|-----|-----|-----|-----|-----|-----|------|
| 2019年3月期 | 473 | 620 | 588 | 651 | 616 | 513 | 461 | 439 | 445 | 448 | 489 | 477 | 518 |
| 2020年3月期 | 538 | 606 | 589 | 562 | 561 | 553 | 501 | 455 | 509 | 452 | 434 | 482 | 520 |
| 2021年3月期 | 611 | 630 | 624 | 641 | 634 | | | | | | | | 628 |

US冷凍ウデ(ピクニック) (円/KG)

※ピクニックとは部位の名前です。

出所:農畜産業振興機構(全て単純平均単価)

| | 4月 | 5月 | 6月 | 7月 | 8月 | 9月 | 10月 | 11月 | 12月 | 1月 | 2月 | 3月 | 年度平均 |
|----------|-----|-----|-----|-----|-----|-----|-----|-----|-----|-----|-----|-----|------|
| 2019年3月期 | 545 | 530 | 549 | 536 | 526 | 495 | 490 | 483 | 474 | 467 | 471 | 476 | 504 |
| 2020年3月期 | 515 | 507 | 503 | 491 | 493 | 488 | 486 | 488 | 504 | 506 | 502 | 488 | 498 |
| 2021年3月期 | 477 | 490 | 492 | 482 | 485 | | | | | | | | 485 |

○鶏肉相場(P6)

鶏肉卸売価格(モモ肉、税抜、円/KG)

出所:食品産業新聞社畜産日報掲載分から単純平均単価

| | 4月 | 5月 | 6月 | 7月 | 8月 | 9月 | 10月 | 11月 | 12月 | 1月 | 2月 | 3月 | 年度平均 |
|----------|-----|-----|-----|-----|-----|-----|-----|-----|-----|-----|-----|-----|------|
| 2019年3月期 | 618 | 590 | 573 | 565 | 545 | 563 | 573 | 580 | 633 | 658 | 650 | 647 | 600 |
| 2020年3月期 | 617 | 603 | 568 | 548 | 525 | 525 | 525 | 545 | 594 | 616 | 598 | 580 | 570 |
| 2021年3月期 | 578 | 608 | 609 | 592 | 588 | | | | | | | | 595 |

鶏肉卸売価格(ムネ肉、税抜、円/KG)

出所:食品産業新聞社畜産日報掲載分から単純平均単価

| | 4月 | 5月 | 6月 | 7月 | 8月 | 9月 | 10月 | 11月 | 12月 | 1月 | 2月 | 3月 | 年度平均 |
|----------|-----|-----|-----|-----|-----|-----|-----|-----|-----|-----|-----|-----|------|
| 2019年3月期 | 303 | 290 | 280 | 278 | 270 | 275 | 280 | 280 | 280 | 273 | 240 | 227 | 273 |
| 2020年3月期 | 217 | 235 | 240 | 233 | 227 | 230 | 250 | 250 | 259 | 254 | 246 | 240 | 240 |
| 2021年3月期 | 237 | 253 | 260 | 267 | 273 | | | | | | | | 258 |

ブラジル もも肉価格(円/KG)

出所:食品産業新聞社畜産日報掲載分から単純平均単価

| | 4月 | 5月 | 6月 | 7月 | 8月 | 9月 | 10月 | 11月 | 12月 | 1月 | 2月 | 3月 | 年度平均 |
|----------|-----|-----|-----|-----|-----|-----|-----|-----|-----|-----|-----|-----|------|
| 2019年3月期 | 270 | 280 | 353 | 411 | 353 | 303 | 285 | 292 | 328 | 340 | 340 | 338 | 324 |
| 2020年3月期 | 355 | 360 | 365 | 360 | 312 | 305 | 288 | 300 | 300 | 296 | 288 | 274 | 317 |
| 2021年3月期 | 260 | 260 | 250 | 237 | 235 | | | | | | | | 248 |

○海外食肉相場(P10)

米国産 牛肉カットアウトバリュー 枝肉ベース (ドル/100ポンド)

出所: 米国食肉輸出連合会

| | 4月 | 5月 | 6月 | 7月 | 8月 | 9月 | 10月 | 11月 | 12月 | 1月 | 2月 | 3月 | 年度平均 |
|----------|-------|-------|-------|-------|-------|-------|-------|-------|-------|-------|-------|-------|-------|
| 2019年3月期 | 215.3 | 229.3 | 221.0 | 206.3 | 209.2 | 206.1 | 208.2 | 214.6 | 213.6 | 215.0 | 217.8 | 227.5 | 215.3 |
| 2020年3月期 | 230.3 | 223.6 | 221.3 | 214.8 | 230.2 | 221.4 | 219.7 | 235.5 | 217.2 | 211.9 | 207.6 | 228.1 | 221.8 |
| 2021年3月期 | 241.9 | 405.8 | 242.3 | 203.2 | | | | | | | | | 91.1 |

米国産 豚肉カットアウトバリュー 枝肉ベース (ドル/100ポンド)

出所: 米国食肉輸出連合会

| | 4月 | 5月 | 6月 | 7月 | 8月 | 9月 | 10月 | 11月 | 12月 | 1月 | 2月 | 3月 | 年度平均 |
|----------|------|-------|------|------|------|------|------|------|------|------|------|------|------|
| 2019年3月期 | 68.0 | 73.9 | 83.3 | 81.1 | 68.4 | 75.0 | 78.6 | 81.1 | 71.6 | 69.4 | 62.8 | 72.4 | 73.8 |
| 2020年3月期 | 84.7 | 85.1 | 80.3 | 77.4 | 83.7 | 71.0 | 76.4 | 83.4 | 79.2 | 74.7 | 64.9 | 72.8 | 77.8 |
| 2021年3月期 | 65.8 | 105.8 | 68.5 | 67.9 | | | | | | | | | 25.7 |

○海外生体相場(P11~12)

米国 肥育豚価格 (生産者販売価格、セント/ポンド)

出所: 農畜産業振興機構(全て単純平均単価)

| | 4月 | 5月 | 6月 | 7月 | 8月 | 9月 | 10月 | 11月 | 12月 | 1月 | 2月 | 3月 | 年度平均 |
|----------|------|------|------|------|------|------|------|------|------|------|------|------|------|
| 2019年3月期 | 39.9 | 46.9 | 57.0 | 55.4 | 37.9 | 38.4 | 47.5 | 42.2 | 38.6 | 40.5 | 39.0 | 42.5 | 43.8 |
| 2020年3月期 | 57.7 | 59.6 | 56.6 | 53.1 | 55.5 | 41.7 | 44.7 | 42.3 | 42.3 | 43.4 | 40.6 | 43.6 | 48.4 |
| 2021年3月期 | 36.1 | 46.5 | 34.3 | 34.2 | | | | | | | | | 12.6 |

豪州 肥育牛価格 (生産者販売価格、豪セント/KG)

出所: 農畜産業振興機構(全て単純平均単価)

| | 4月 | 5月 | 6月 | 7月 | 8月 | 9月 | 10月 | 11月 | 12月 | 1月 | 2月 | 3月 | 年度平均 |
|----------|-------|-------|-------|-------|-------|-------|-------|-------|-------|-------|-------|-------|-------|
| 2019年3月期 | 487.8 | 468.6 | 470.3 | 485.4 | 480.0 | 497.3 | 521.6 | 553.0 | 543.0 | 535.0 | 521.3 | 482.0 | 503.8 |
| 2020年3月期 | 521.3 | 524.0 | 522.5 | 535.0 | 549.2 | 549.5 | 559.5 | 589.6 | 575.0 | 563.0 | 618.3 | 621.3 | 560.7 |
| 2021年3月期 | 563.8 | 574.6 | 614.3 | 634.0 | | | | | | | | | 198.9 |

ウルグアイ 牛生体価格 生体ベース (ドル/100kg)

出所: 豪州食肉家畜生産者事業団

| | 4月 | 5月 | 6月 | 7月 | 8月 | 9月 | 10月 | 11月 | 12月 | 1月 | 2月 | 3月 | 年度平均 |
|----------|-------|-------|-------|-------|-------|-------|-------|-------|-------|-------|-------|-------|-------|
| 2019年3月期 | 173.5 | 189.6 | 190.6 | 192.0 | 200.6 | 193.4 | 185.4 | 187.6 | 179.2 | 179.4 | 184.2 | 187.0 | 186.9 |
| 2020年3月期 | 181.0 | 189.9 | 210.2 | 220.6 | 223.5 | 225.6 | 229.5 | 234.5 | 226.5 | 215.8 | 210.8 | 199.3 | 213.9 |
| 2021年3月期 | 171.9 | 183.2 | 188.5 | 191.3 | 201.4 | | | | | | | | 187.3 |

○飼料価格相場(P13～14)

とうもろこしの輸入価格

(円/トン)

出所:農畜産業振興機構(全て単純平均単価)

| | 4月 | 5月 | 6月 | 7月 | 8月 | 9月 | 10月 | 11月 | 12月 | 1月 | 2月 | 3月 | 年度平均 |
|----------|--------|--------|--------|--------|--------|--------|--------|--------|--------|--------|--------|--------|--------|
| 2019年3月期 | 21,701 | 22,893 | 23,508 | 24,440 | 24,168 | 24,049 | 24,110 | 24,010 | 24,127 | 23,287 | 23,386 | 24,109 | 23,649 |
| 2020年3月期 | 24,274 | 23,736 | 23,256 | 23,355 | 24,091 | 23,607 | 23,633 | 23,250 | 22,821 | 23,234 | 23,329 | 23,466 | 23,504 |
| 2021年3月期 | 23,853 | 22,861 | 21,375 | 20,471 | | | | | | | | | 22,140 |

配合飼料の価格動向

(円/トン)

出所:農畜産業振興機構(全て単純平均単価)

| | 4月 | 5月 | 6月 | 7月 | 8月 | 9月 | 10月 | 11月 | 12月 | 1月 | 2月 | 3月 | 年度平均 |
|----------|--------|--------|--------|--------|--------|--------|--------|--------|--------|--------|--------|--------|--------|
| 2019年3月期 | 60,944 | 60,924 | 60,894 | 62,328 | 62,321 | 62,408 | 61,732 | 61,854 | 61,906 | 62,529 | 62,497 | 62,586 | 61,910 |
| 2020年3月期 | 61,917 | 61,999 | 61,981 | 61,635 | 61,652 | 61,670 | 60,356 | 60,394 | 60,373 | 61,065 | 61,046 | 61,075 | 61,264 |
| 2021年3月期 | 60,455 | 60,515 | 60,497 | | | | | | | | | | 60,489 |

シカゴ商品取引所とうもろこし先物相場価格(期近、当月最終日の終値)

(USDドル/ブッシェル)

出所:農畜産業振興機構(全て単純平均単価)

| | 4月 | 5月 | 6月 | 7月 | 8月 | 9月 | 10月 | 11月 | 12月 | 1月 | 2月 | 3月 | 年度平均 |
|----------|------|------|------|------|------|------|------|------|------|------|------|------|------|
| 2018年3月期 | 3.58 | 3.72 | 3.71 | 3.74 | 3.42 | 3.55 | 3.46 | 3.42 | 3.51 | 3.62 | 3.75 | 3.88 | 3.61 |
| 2019年3月期 | 3.93 | 3.94 | 3.50 | 3.72 | 3.51 | 3.56 | 3.63 | 3.67 | 3.75 | 3.77 | 3.62 | 3.62 | 3.69 |
| 2020年3月期 | 3.58 | 4.27 | 4.20 | 4.00 | 3.58 | | | | | | | | 3.93 |

シカゴ商品取引所大豆先物相場価格(期近、当月最終日の終値)

(USDドル/ブッシェル)

出所:農畜産業振興機構(全て単純平均単価)

| | 4月 | 5月 | 6月 | 7月 | 8月 | 9月 | 10月 | 11月 | 12月 | 1月 | 2月 | 3月 | 年度平均 |
|----------|-------|-------|------|-------|------|------|------|------|------|------|-------|-------|------|
| 2018年3月期 | 9.45 | 9.16 | 9.42 | 10.01 | 9.36 | 9.68 | 9.74 | 9.86 | 9.52 | 9.96 | 10.45 | 10.45 | 9.76 |
| 2019年3月期 | 10.38 | 10.19 | 8.59 | 9.04 | 8.33 | 8.46 | 8.39 | 8.95 | 8.83 | 9.15 | 8.98 | 9.00 | 9.02 |
| 2020年3月期 | 8.18 | 8.78 | 9.00 | 8.64 | 8.57 | | | | | | | | 8.63 |

○牛肉需給動向(P3)

(t) 出所: 農畜産業振興機構

| 2019年3月期 | 4月 | 5月 | 6月 | 7月 | 8月 | 9月 | 10月 | 11月 | 12月 | 1月 | 2月 | 3月 | 年間合計 |
|----------|--------|---------|---------|---------|---------|---------|---------|---------|---------|---------|---------|---------|---------|
| 供給量 | 90,885 | 80,543 | 73,646 | 95,559 | 83,510 | 77,708 | 80,200 | 86,010 | 78,441 | 75,433 | 64,981 | 65,626 | 952,542 |
| うち生産量 | 28,775 | 26,407 | 26,327 | 30,058 | 25,781 | 25,454 | 28,779 | 34,325 | 30,829 | 24,868 | 24,875 | 26,378 | 332,856 |
| うち輸入量 | 62,110 | 54,136 | 47,319 | 65,501 | 57,729 | 52,254 | 51,421 | 51,685 | 47,612 | 50,565 | 40,106 | 39,248 | 619,686 |
| 推定出回り量 | 89,694 | 74,517 | 71,011 | 86,244 | 75,608 | 77,971 | 79,347 | 83,107 | 83,977 | 72,814 | 64,721 | 71,357 | 930,368 |
| うち国産品 | 28,976 | 26,421 | 26,014 | 29,789 | 25,493 | 24,258 | 28,570 | 33,022 | 31,015 | 25,232 | 24,678 | 26,350 | 329,818 |
| うち輸入品 | 60,718 | 48,096 | 44,997 | 56,455 | 50,115 | 53,713 | 50,777 | 50,085 | 52,962 | 47,582 | 40,043 | 45,007 | 600,550 |
| 推定期末在庫 | 98,488 | 104,243 | 106,611 | 115,645 | 123,281 | 122,731 | 123,268 | 125,754 | 119,768 | 122,130 | 122,055 | 115,940 | - |
| うち国産品 | 9,026 | 8,741 | 8,787 | 8,775 | 8,797 | 9,706 | 9,599 | 10,485 | 9,849 | 9,228 | 9,090 | 8,734 | - |
| うち輸入品 | 89,462 | 95,502 | 97,824 | 106,870 | 114,484 | 113,025 | 113,669 | 115,269 | 109,919 | 112,902 | 112,965 | 107,206 | - |

| 2020年3月期 | 4月 | 5月 | 6月 | 7月 | 8月 | 9月 | 10月 | 11月 | 12月 | 1月 | 2月 | 3月 | 年間合計 |
|----------|---------|---------|---------|---------|---------|---------|---------|---------|---------|---------|---------|---------|---------|
| 供給量 | 96,568 | 74,282 | 72,592 | 93,037 | 78,159 | 76,678 | 83,612 | 80,646 | 83,463 | 73,213 | 66,584 | 73,149 | 951,983 |
| うち生産量 | 29,292 | 25,719 | 25,308 | 30,506 | 24,602 | 26,144 | 28,234 | 33,361 | 30,348 | 25,803 | 24,758 | 25,572 | 329,647 |
| うち輸入量 | 67,276 | 48,563 | 47,284 | 62,531 | 53,557 | 50,534 | 55,378 | 47,285 | 53,115 | 47,410 | 41,826 | 47,577 | 622,336 |
| 推定出回り量 | 94,950 | 71,450 | 67,882 | 84,957 | 78,879 | 76,157 | 81,831 | 88,627 | 88,100 | 66,511 | 69,669 | 67,927 | 936,940 |
| うち国産品 | 28,264 | 26,094 | 24,244 | 30,997 | 23,941 | 25,768 | 26,022 | 33,275 | 27,781 | 27,716 | 24,553 | 24,871 | 323,526 |
| うち輸入品 | 66,686 | 45,356 | 43,638 | 53,960 | 54,938 | 50,389 | 55,809 | 55,352 | 60,319 | 38,795 | 45,116 | 43,056 | 613,414 |
| 推定期末在庫 | 117,194 | 119,759 | 124,128 | 131,898 | 130,761 | 130,894 | 132,306 | 123,915 | 118,780 | 125,264 | 121,874 | 126,843 | - |
| うち国産品 | 9,398 | 8,756 | 9,479 | 8,678 | 8,922 | 8,910 | 10,753 | 10,429 | 12,498 | 10,367 | 10,267 | 10,715 | - |
| うち輸入品 | 107,796 | 111,003 | 114,649 | 123,220 | 121,839 | 121,984 | 121,553 | 113,486 | 106,282 | 114,897 | 111,607 | 116,128 | - |

| 2021年3月期 | 4月 | 5月 | 6月 | 7月 | 8月 | 9月 | 10月 | 11月 | 12月 | 1月 | 2月 | 3月 | 年間合計 |
|----------|---------|---------|---------|---------|----|----|-----|-----|-----|----|----|----|---------|
| 供給量 | 96,131 | 75,284 | 78,534 | 83,300 | | | | | | | | | 333,249 |
| うち生産量 | 27,096 | 25,244 | 27,825 | 30,660 | | | | | | | | | 110,825 |
| うち輸入量 | 69,035 | 50,040 | 50,709 | 52,640 | | | | | | | | | 222,424 |
| 推定出回り量 | 80,730 | 69,267 | 78,404 | 86,251 | | | | | | | | | 314,652 |
| うち国産品 | 26,062 | 24,966 | 28,339 | 30,503 | | | | | | | | | 109,870 |
| うち輸入品 | 54,668 | 44,301 | 50,065 | 55,748 | | | | | | | | | 204,782 |
| 推定期末在庫 | 141,987 | 147,770 | 147,453 | 144,076 | | | | | | | | | - |
| うち国産品 | 11,492 | 11,536 | 10,575 | 10,306 | | | | | | | | | - |
| うち輸入品 | 130,495 | 136,234 | 136,878 | 133,770 | | | | | | | | | - |

○豚肉需給動向(P5)

(t) 出所: 農畜産業振興機構

| 2019年3月期 | 4月 | 5月 | 6月 | 7月 | 8月 | 9月 | 10月 | 11月 | 12月 | 1月 | 2月 | 3月 | 年間合計 |
|----------|---------|---------|---------|---------|---------|---------|---------|---------|---------|---------|---------|---------|-----------|
| 供給量 | 155,640 | 156,379 | 146,250 | 146,793 | 149,789 | 136,647 | 166,031 | 165,599 | 152,484 | 141,180 | 154,228 | 142,661 | 1,813,681 |
| うち生産量 | 75,496 | 76,152 | 69,573 | 68,709 | 70,135 | 67,675 | 82,052 | 82,253 | 79,338 | 79,477 | 72,590 | 74,058 | 897,508 |
| うち輸入量 | 80,144 | 80,227 | 76,677 | 78,084 | 79,654 | 68,972 | 83,979 | 83,346 | 73,146 | 61,703 | 81,638 | 68,603 | 916,173 |
| 推定出回り量 | 158,559 | 154,017 | 147,959 | 149,228 | 149,734 | 145,081 | 167,624 | 168,017 | 155,468 | 137,627 | 151,121 | 143,020 | 1,827,455 |
| うち国産品 | 77,128 | 75,842 | 71,104 | 68,762 | 69,223 | 67,772 | 81,863 | 81,924 | 78,307 | 79,203 | 72,334 | 72,588 | 896,050 |
| うち輸入品 | 81,431 | 78,175 | 76,855 | 80,466 | 80,511 | 77,309 | 85,761 | 86,093 | 77,161 | 58,424 | 78,787 | 70,432 | 931,405 |
| 推定期末在庫 | 177,966 | 180,286 | 178,521 | 176,037 | 176,030 | 167,559 | 165,907 | 163,417 | 160,361 | 163,889 | 166,915 | 166,489 | - |
| うち国産品 | 18,753 | 19,021 | 17,434 | 17,332 | 18,182 | 18,048 | 18,178 | 18,435 | 19,394 | 19,643 | 19,818 | 21,221 | - |
| うち輸入品 | 159,213 | 161,265 | 161,087 | 158,705 | 157,848 | 149,511 | 147,729 | 144,982 | 140,967 | 144,246 | 147,097 | 145,268 | - |

| 2020年3月期 | 4月 | 5月 | 6月 | 7月 | 8月 | 9月 | 10月 | 11月 | 12月 | 1月 | 2月 | 3月 | 年間合計 |
|----------|---------|---------|---------|---------|---------|---------|---------|---------|---------|---------|---------|---------|-----------|
| 供給量 | 176,023 | 159,650 | 143,295 | 160,214 | 152,727 | 146,944 | 163,052 | 160,249 | 153,148 | 153,144 | 140,412 | 147,163 | 1,856,021 |
| うち生産量 | 77,788 | 75,254 | 67,049 | 74,899 | 67,745 | 68,819 | 79,112 | 77,534 | 80,884 | 80,864 | 73,425 | 79,535 | 902,908 |
| うち輸入量 | 98,235 | 84,396 | 76,246 | 85,315 | 84,982 | 78,125 | 83,940 | 82,715 | 72,264 | 72,280 | 66,987 | 67,628 | 953,113 |
| 推定出回り量 | 152,687 | 142,740 | 142,547 | 153,084 | 146,276 | 149,424 | 162,201 | 166,197 | 163,753 | 146,161 | 141,397 | 145,073 | 1,811,540 |
| うち国産品 | 76,406 | 76,085 | 65,290 | 76,348 | 68,891 | 69,025 | 79,247 | 75,817 | 81,783 | 80,150 | 71,714 | 77,478 | 898,234 |
| うち輸入品 | 76,281 | 66,655 | 77,257 | 76,736 | 77,385 | 80,399 | 82,954 | 90,380 | 81,970 | 66,011 | 69,683 | 67,595 | 913,306 |
| 推定期末在庫 | 189,766 | 206,606 | 207,284 | 214,359 | 220,743 | 218,205 | 218,968 | 212,979 | 202,275 | 209,212 | 208,119 | 210,137 | - |
| うち国産品 | 22,544 | 21,643 | 23,332 | 21,828 | 20,615 | 20,351 | 20,128 | 21,804 | 20,806 | 21,474 | 23,077 | 25,062 | - |
| うち輸入品 | 167,222 | 184,963 | 183,952 | 192,531 | 200,128 | 197,854 | 198,840 | 191,175 | 181,469 | 187,738 | 185,042 | 185,075 | - |

| 2021年3月期 | 4月 | 5月 | 6月 | 7月 | 8月 | 9月 | 10月 | 11月 | 12月 | 1月 | 2月 | 3月 | 年間合計 |
|----------|---------|---------|---------|---------|----|----|-----|-----|-----|----|----|----|---------|
| 供給量 | 181,807 | 151,182 | 152,057 | 148,978 | | | | | | | | | 634,024 |
| うち生産量 | 80,239 | 71,318 | 72,535 | 73,967 | | | | | | | | | 298,059 |
| うち輸入量 | 101,568 | 79,864 | 79,522 | 75,011 | | | | | | | | | 335,965 |
| 推定出回り量 | 167,907 | 139,324 | 152,572 | 158,510 | | | | | | | | | 618,313 |
| うち国産品 | 82,085 | 73,523 | 70,031 | 75,708 | | | | | | | | | 301,347 |
| うち輸入品 | 85,822 | 65,801 | 82,541 | 82,802 | | | | | | | | | 316,966 |
| 推定期末在庫 | 223,945 | 235,742 | 235,073 | 225,452 | | | | | | | | | - |
| うち国産品 | 23,124 | 20,858 | 23,208 | 21,378 | | | | | | | | | - |
| うち輸入品 | 200,821 | 214,884 | 211,865 | 204,074 | | | | | | | | | - |

○鶏肉需給動向(P7)

(t) 出所：農畜産業振興機構

注：数量は骨付き肉ベース。成鶏肉を含む。輸入量には鶏肉以外の家禽肉を含まない。

| 2019年3月期 | 4月 | 5月 | 6月 | 7月 | 8月 | 9月 | 10月 | 11月 | 12月 | 1月 | 2月 | 3月 | 年間合計 |
|----------|---------|---------|---------|---------|---------|---------|---------|---------|---------|---------|---------|---------|-----------|
| 供給量 | 182,290 | 183,764 | 178,025 | 173,770 | 175,997 | 164,359 | 195,355 | 180,602 | 194,290 | 173,021 | 171,280 | 175,364 | 2,148,117 |
| うち生産量 | 132,721 | 136,623 | 134,131 | 128,099 | 125,193 | 124,113 | 140,944 | 137,423 | 147,285 | 131,045 | 129,816 | 135,813 | 1,603,206 |
| うち輸入量 | 49,569 | 47,141 | 43,894 | 45,671 | 50,804 | 40,246 | 54,411 | 43,179 | 47,005 | 41,976 | 41,464 | 39,551 | 544,911 |
| 推定出回り量 | 188,128 | 181,436 | 185,032 | 171,855 | 174,986 | 170,517 | 191,392 | 181,194 | 201,081 | 170,271 | 174,530 | 181,918 | 2,172,340 |
| うち国産品 | 135,226 | 131,843 | 135,565 | 128,915 | 124,751 | 125,202 | 139,817 | 137,946 | 149,638 | 129,651 | 128,426 | 137,003 | 1,603,983 |
| うち輸入品 | 52,902 | 49,593 | 49,467 | 42,940 | 50,235 | 45,315 | 51,575 | 43,248 | 51,443 | 40,620 | 46,104 | 44,915 | 568,357 |
| 推定期末在庫 | 170,714 | 173,042 | 166,035 | 167,950 | 168,961 | 162,803 | 166,766 | 166,174 | 159,383 | 162,133 | 158,883 | 152,329 | - |
| うち国産品 | 25,924 | 30,704 | 29,270 | 28,454 | 28,896 | 27,807 | 28,934 | 28,411 | 26,058 | 27,452 | 28,842 | 27,652 | - |
| うち輸入品 | 144,790 | 142,338 | 136,765 | 139,496 | 140,065 | 134,996 | 137,832 | 137,763 | 133,325 | 134,681 | 130,041 | 124,677 | - |

| 2020年3月期 | 4月 | 5月 | 6月 | 7月 | 8月 | 9月 | 10月 | 11月 | 12月 | 1月 | 2月 | 3月 | 年間合計 |
|----------|---------|---------|---------|---------|---------|---------|---------|---------|---------|---------|---------|---------|-----------|
| 供給量 | 185,473 | 185,546 | 178,392 | 189,821 | 180,719 | 182,472 | 195,181 | 191,910 | 197,068 | 180,070 | 181,654 | 185,802 | 2,234,109 |
| うち生産量 | 138,207 | 138,973 | 135,027 | 136,609 | 130,202 | 128,863 | 143,590 | 143,082 | 152,146 | 138,450 | 137,735 | 139,107 | 1,661,991 |
| うち輸入量 | 47,266 | 46,573 | 43,365 | 53,212 | 50,517 | 53,609 | 51,591 | 48,828 | 44,922 | 41,620 | 43,919 | 46,695 | 572,118 |
| 推定出回り量 | 184,639 | 185,931 | 177,575 | 186,806 | 180,370 | 175,085 | 192,353 | 192,892 | 201,453 | 175,770 | 180,051 | 183,065 | 2,215,991 |
| うち国産品 | 135,114 | 139,031 | 135,137 | 138,141 | 130,511 | 127,721 | 144,169 | 143,806 | 152,547 | 137,303 | 137,276 | 137,766 | 1,658,522 |
| うち輸入品 | 49,525 | 46,900 | 42,438 | 48,665 | 49,859 | 47,364 | 48,184 | 49,086 | 48,906 | 38,467 | 42,775 | 45,299 | 557,469 |
| 推定期末在庫 | 153,163 | 152,778 | 153,595 | 156,610 | 156,959 | 164,346 | 167,174 | 166,192 | 161,807 | 166,107 | 167,710 | 170,447 | - |
| うち国産品 | 30,745 | 30,687 | 30,577 | 29,045 | 28,736 | 29,878 | 29,299 | 28,575 | 28,174 | 29,321 | 29,780 | 31,121 | - |
| うち輸入品 | 122,418 | 122,091 | 123,018 | 127,565 | 128,223 | 134,468 | 137,875 | 137,617 | 133,633 | 136,786 | 137,930 | 139,326 | - |

| 2021年3月期 | 4月 | 5月 | 6月 | 7月 | 8月 | 9月 | 10月 | 11月 | 12月 | 1月 | 2月 | 3月 | 年間合計 |
|----------|---------|---------|---------|---------|----|----|-----|-----|-----|----|----|----|---------|
| 供給量 | 189,071 | 173,373 | 190,240 | 190,972 | | | | | | | | | 743,656 |
| うち生産量 | 142,365 | 137,254 | 139,587 | 139,394 | | | | | | | | | 558,600 |
| うち輸入量 | 46,706 | 36,119 | 50,653 | 51,578 | | | | | | | | | 185,056 |
| 推定出回り量 | 187,816 | 175,707 | 188,822 | 191,609 | | | | | | | | | 743,954 |
| うち国産品 | 146,284 | 143,351 | 142,140 | 128,424 | | | | | | | | | 560,199 |
| うち輸入品 | 41,532 | 32,356 | 46,682 | 63,185 | | | | | | | | | 183,755 |
| 推定期末在庫 | 171,702 | 169,368 | 170,786 | 170,149 | | | | | | | | | - |
| うち国産品 | 27,202 | 21,105 | 18,552 | 29,522 | | | | | | | | | - |
| うち輸入品 | 144,500 | 148,263 | 152,234 | 140,627 | | | | | | | | | - |

○ハムソーセージ需給動向(P15)

ハム・ソーセージ

2019年3月期

千kg

| | 4月 | 5月 | 6月 | 7月 | 8月 | 9月 | 10月 | 11月 | 12月 | 1月 | 2月 | 3月 | 年間合計 |
|-------|--------|--------|--------|--------|--------|--------|--------|--------|--------|--------|--------|--------|---------|
| 国内生産量 | 48,395 | 46,796 | 47,852 | 48,230 | 45,960 | 44,571 | 47,332 | 49,239 | 49,962 | 38,293 | 39,391 | 44,937 | 550,958 |
| 輸入量 | 3,312 | 3,433 | 3,491 | 3,814 | 3,547 | 3,070 | 3,966 | 3,773 | 3,679 | 3,195 | 3,286 | 3,154 | 41,721 |
| 合計 | 51,707 | 50,229 | 51,343 | 52,044 | 49,507 | 47,641 | 51,298 | 53,012 | 53,641 | 41,488 | 42,677 | 48,091 | 592,679 |

2020年3月期

千kg

| | 4月 | 5月 | 6月 | 7月 | 8月 | 9月 | 10月 | 11月 | 12月 | 1月 | 2月 | 3月 | 年間合計 |
|-------|--------|--------|--------|--------|--------|--------|--------|--------|--------|--------|--------|--------|---------|
| 国内生産量 | 49,558 | 45,393 | 45,920 | 48,773 | 46,197 | 44,899 | 47,831 | 49,466 | 50,268 | 38,811 | 41,439 | 46,669 | 555,224 |
| 輸入量 | 4,333 | 3,590 | 3,443 | 3,505 | 4,308 | 4,641 | 3,889 | 4,297 | 4,287 | 3,681 | 2,936 | 3,491 | 46,401 |
| 合計 | 53,891 | 48,983 | 49,363 | 52,278 | 50,505 | 49,540 | 51,720 | 53,763 | 54,555 | 42,492 | 44,375 | 50,160 | 601,625 |

2021年3月期

千kg

| | 4月 | 5月 | 6月 | 7月 | 8月 | 9月 | 10月 | 11月 | 12月 | 1月 | 2月 | 3月 | 年間合計 |
|-------|--------|--------|--------|----|----|----|-----|-----|-----|----|----|----|---------|
| 国内生産量 | 50,025 | 45,342 | 47,604 | | | | | | | | | | 142,971 |
| 輸入量 | 4,610 | 3,049 | 3,247 | | | | | | | | | | 10,906 |
| 合計 | 54,635 | 48,391 | 50,851 | | | | | | | | | | 153,877 |

○乳製品相場(P8)

脱脂粉乳(CIF、ALIC分、円/kg)

出所: 農畜産業振興機構(全て単純平均金単価)

| | 4月 | 5月 | 6月 | 7月 | 8月 | 9月 | 10月 | 11月 | 12月 | 1月 | 2月 | 3月 | 平均 |
|----------|-----|-----|-----|-----|-----|-----|-----|-----|-----|-----|-----|-----|-----|
| 2019年3月期 | 205 | 253 | 202 | 209 | 223 | 239 | 223 | 231 | 231 | 210 | 228 | 229 | 224 |
| 2020年3月期 | 242 | 242 | 303 | 283 | 288 | 280 | 283 | 286 | 267 | 290 | 314 | 315 | 283 |
| 2021年3月期 | 309 | 321 | 305 | 304 | | | | | | | | | 310 |

ナチュラルチーズ(CIF、円/kg)

出所: 農畜産業振興機構(全て単純平均金単価)

| | 4月 | 5月 | 6月 | 7月 | 8月 | 9月 | 10月 | 11月 | 12月 | 1月 | 2月 | 3月 | 平均 |
|----------|-----|-----|-----|-----|-----|-----|-----|-----|-----|-----|-----|-----|-----|
| 2019年3月期 | 485 | 488 | 487 | 482 | 487 | 491 | 510 | 490 | 508 | 496 | 478 | 486 | 491 |
| 2020年3月期 | 469 | 475 | 474 | 460 | 453 | 460 | 463 | 478 | 479 | 471 | 476 | 479 | 470 |
| 2021年3月期 | 458 | 452 | 475 | 463 | | | | | | | | | 462 |

○「家計調査」購入数量(P9,15)

(g) 出所: 総務省「家計調査」

| 2018年 | 1月 | 2月 | 3月 | 4月 | 5月 | 6月 | 7月 | 8月 | 9月 | 10月 | 11月 | 12月 |
|-------------------|-------|-------|-------|-------|-------|-------|-------|-------|-------|-------|-------|-------|
| ハム・ソーセージ・ベーコン購入数量 | 709 | 669 | 759 | 754 | 828 | 807 | 795 | 808 | 753 | 769 | 806 | 976 |
| 牛肉購入数量 | 526 | 485 | 548 | 570 | 541 | 525 | 544 | 589 | 536 | 552 | 556 | 748 |
| 豚肉購入数量 | 1,787 | 1,691 | 1,816 | 1,771 | 1,817 | 1,792 | 1,747 | 1,687 | 1,773 | 1,840 | 1,850 | 1,943 |
| 鶏肉購入数量 | 1,382 | 1,342 | 1,345 | 1,378 | 1,397 | 1,366 | 1,294 | 1,285 | 1,368 | 1,480 | 1,461 | 1,765 |

| 2019年 | 1月 | 2月 | 3月 | 4月 | 5月 | 6月 | 7月 | 8月 | 9月 | 10月 | 11月 | 12月 |
|-------------------|-------|-------|-------|-------|-------|-------|-------|-------|-------|-------|-------|-------|
| ハム・ソーセージ・ベーコン購入数量 | 685 | 672 | 766 | 756 | 817 | 805 | 843 | 814 | 770 | 811 | 829 | 987 |
| 牛肉購入数量 | 548 | 492 | 571 | 521 | 560 | 525 | 522 | 558 | 484 | 478 | 561 | 738 |
| 豚肉購入数量 | 1,871 | 1,715 | 1,876 | 1,720 | 1,704 | 1,768 | 1,720 | 1,630 | 1,698 | 1,808 | 1,784 | 1,884 |
| 鶏肉購入数量 | 1,429 | 1,397 | 1,428 | 1,365 | 1,418 | 1,437 | 1,298 | 1,244 | 1,343 | 1,483 | 1,452 | 1,625 |

| 2020年 | 1月 | 2月 | 3月 | 4月 | 5月 | 6月 | 7月 | 8月 | 9月 | 10月 | 11月 | 12月 |
|-------------------|-------|-------|-------|-------|-------|-------|-------|----|----|-----|-----|-----|
| ハム・ソーセージ・ベーコン購入数量 | 680 | 734 | 851 | 890 | 908 | 845 | 886 | | | | | |
| 牛肉購入数量 | 505 | 522 | 600 | 655 | 719 | 564 | 569 | | | | | |
| 豚肉購入数量 | 1,737 | 1,810 | 2,044 | 2,058 | 2,024 | 1,881 | 1,845 | | | | | |
| 鶏肉購入数量 | 1,358 | 1,402 | 1,617 | 1,805 | 1,716 | 1,599 | 1,530 | | | | | |

○「家計調査」支出金額(P9,15)

(円) 出所: 総務省「家計調査」

| 2018 | 1月 | 2月 | 3月 | 4月 | 5月 | 6月 | 7月 | 8月 | 9月 | 10月 | 11月 | 12月 |
|-------------------|-------|-------|-------|-------|-------|-------|-------|-------|-------|-------|-------|-------|
| ハム・ソーセージ・ベーコン支出金額 | 1,091 | 1,051 | 1,176 | 1,190 | 1,251 | 1,248 | 1,318 | 1,247 | 1,181 | 1,196 | 1,285 | 1,663 |
| 牛肉支出金額 | 1,756 | 1,584 | 1,726 | 1,719 | 1,749 | 1,692 | 1,676 | 1,874 | 1,665 | 1,735 | 1,698 | 2,997 |
| 豚肉支出金額 | 2,626 | 2,488 | 2,521 | 2,492 | 2,565 | 2,495 | 2,483 | 2,428 | 2,546 | 2,605 | 2,584 | 2,758 |
| 鶏肉支出金額 | 1,389 | 1,306 | 1,320 | 1,281 | 1,316 | 1,231 | 1,194 | 1,163 | 1,302 | 1,371 | 1,339 | 1,665 |

| 2019 | 1月 | 2月 | 3月 | 4月 | 5月 | 6月 | 7月 | 8月 | 9月 | 10月 | 11月 | 12月 |
|-------------------|-------|-------|-------|-------|-------|-------|-------|-------|-------|-------|-------|-------|
| ハム・ソーセージ・ベーコン支出金額 | 1,053 | 1,040 | 1,189 | 1,169 | 1,246 | 1,278 | 1,324 | 1,281 | 1,201 | 1,241 | 1,318 | 1,693 |
| 牛肉支出金額 | 1,810 | 1,515 | 1,671 | 1,682 | 1,777 | 1,625 | 1,518 | 1,853 | 1,560 | 1,522 | 1,649 | 2,996 |
| 豚肉支出金額 | 2,592 | 2,425 | 2,538 | 2,394 | 2,393 | 2,408 | 2,358 | 2,335 | 2,438 | 2,555 | 2,516 | 2,685 |
| 鶏肉支出金額 | 1,348 | 1,298 | 1,332 | 1,271 | 1,296 | 1,268 | 1,185 | 1,121 | 1,242 | 1,312 | 1,309 | 1,605 |

| 2020 | 1月 | 2月 | 3月 | 4月 | 5月 | 6月 | 7月 | 8月 | 9月 | 10月 | 11月 | 12月 |
|-------------------|-------|-------|-------|-------|-------|-------|-------|----|----|-----|-----|-----|
| ハム・ソーセージ・ベーコン支出金額 | 1,056 | 1,106 | 1,283 | 1,345 | 1,405 | 1,337 | 1,401 | | | | | |
| 牛肉支出金額 | 1,704 | 1,664 | 1,848 | 1,976 | 2,268 | 1,811 | 1,797 | | | | | |
| 豚肉支出金額 | 2,469 | 2,545 | 2,820 | 2,907 | 2,942 | 2,678 | 2,671 | | | | | |
| 鶏肉支出金額 | 1,309 | 1,310 | 1,451 | 1,574 | 1,578 | 1,408 | 1,364 | | | | | |

O Beef Prices

Tokyo Market A-3 Wagyu Steer Prices, Tax Included

Data Source: Tokyo Meat Market Co.Ltd

(yen/kg)

| | Apr | May | Jun | Jul | Aug | Sep | Oct | Nov | Dec | Jan | Feb | Mar | Average |
|----------|-------|-------|-------|-------|-------|-------|-------|-------|-------|-------|-------|-------|---------|
| FY2019/3 | 2,157 | 2,147 | 2,145 | 2,166 | 2,208 | 2,273 | 2,301 | 2,461 | 2,526 | 2,326 | 2,306 | 2,278 | 2,275 |
| FY2020/3 | 2,262 | 2,220 | 2,235 | 2,220 | 2,175 | 2,196 | 2,181 | 2,175 | 2,011 | 2,053 | 1,907 | 1,666 | 2,108 |
| FY2021/3 | 1,518 | 1,618 | 1,671 | 1,844 | 1,849 | | | | | | | | 1,700 |

Australian Chilled Beef [Full Set (Short Grain Fed)] Prices

Data Source: Agriculture & Livestock Industries Corporation (all graphs based on average price)

(yen/kg)

| | Apr | May | Jun | Jul | Aug | Sep | Oct | Nov | Dec | Jan | Feb | Mar | Average |
|----------|-------|-------|-------|-------|-------|-------|-------|-------|-------|-------|-------|-------|---------|
| FY2019/3 | 1,151 | 1,152 | 1,152 | 1,152 | 1,176 | 1,176 | 1,183 | 1,196 | 1,211 | 1,217 | 1,221 | 1,221 | 1,184 |
| FY2020/3 | 1,186 | 1,187 | 1,201 | 1,222 | 1,221 | 1,178 | 1,222 | 1,222 | 1,222 | 1,221 | 1,220 | 1,219 | 1,210 |
| FY2021/3 | 1,221 | 1,221 | 1,221 | 1,221 | 1,201 | | | | | | | | 1,217 |

OPork Prices

Pork Carcass Prices (Tokyo Market Excellent grade, monthly average, Tax Included)

Data Source: Tokyo Meat Market Co.Ltd

(yen/kg)

| | Apr | May | Jun | Jul | Aug | Sep | Oct | Nov | Dec | Jan | Feb | Mar | Average |
|----------|-----|-----|-----|-----|-----|-----|-----|-----|-----|-----|-----|-----|---------|
| FY2019/3 | 473 | 620 | 588 | 651 | 616 | 513 | 461 | 439 | 445 | 448 | 489 | 477 | 518 |
| FY2020/3 | 538 | 606 | 589 | 562 | 561 | 553 | 501 | 455 | 509 | 452 | 434 | 482 | 520 |
| FY2021/3 | 611 | 630 | 624 | 641 | 634 | | | | | | | | 628 |

U.S. Frozen Pork (Picnic) Prices

Data Source: Agriculture & Livestock Industries Corporation (all graphs based on average price)

(yen/kg)

| | Apr | May | Jun | Jul | Aug | Sep | Oct | Nov | Dec | Jan | Feb | Mar | Average |
|----------|-----|-----|-----|-----|-----|-----|-----|-----|-----|-----|-----|-----|---------|
| FY2019/3 | 545 | 530 | 549 | 536 | 526 | 495 | 490 | 483 | 474 | 467 | 471 | 476 | 504 |
| FY2020/3 | 515 | 507 | 503 | 491 | 493 | 488 | 486 | 488 | 504 | 506 | 502 | 488 | 498 |
| FY2021/3 | 477 | 490 | 492 | 482 | 485 | | | | | | | | 485 |

OChicken Prices

Domestic Chicken Thigh Meat Wholesale Prices

Data Source: "DAILY MEAT & LIVESTOCK" which is a trade business paper published in Japan(all graphs based on average price)

(yen/kg)

| | Apr | May | Jun | Jul | Aug | Sep | Oct | Nov | Dec | Jan | Feb | Mar | Average |
|----------|-----|-----|-----|-----|-----|-----|-----|-----|-----|-----|-----|-----|---------|
| FY2019/3 | 618 | 590 | 573 | 565 | 545 | 563 | 573 | 580 | 633 | 658 | 650 | 647 | 600 |
| FY2020/3 | 617 | 603 | 568 | 548 | 525 | 525 | 525 | 545 | 594 | 616 | 598 | 580 | 570 |
| FY2021/3 | 578 | 608 | 609 | 592 | 588 | | | | | | | | 595 |

Domestic Chicken Breast Meat Wholesale Prices

Data Source: "DAILY MEAT & LIVESTOCK" which is a trade business paper published in Japan(all graphs based on average price)

(yen/kg)

| | Apr | May | Jun | Jul | Aug | Sep | Oct | Nov | Dec | Jan | Feb | Mar | Average |
|----------|-----|-----|-----|-----|-----|-----|-----|-----|-----|-----|-----|-----|---------|
| FY2019/3 | 303 | 290 | 280 | 278 | 270 | 275 | 280 | 280 | 280 | 273 | 240 | 227 | 273 |
| FY2020/3 | 217 | 235 | 240 | 233 | 227 | 230 | 250 | 250 | 259 | 254 | 246 | 240 | 240 |
| FY2021/3 | 237 | 253 | 260 | 267 | 273 | | | | | | | | 258 |

Brazilian Chicken Thigh Prices

Data Source: "DAILY MEAT & LIVESTOCK" which is a trade business paper published in Japan(all graphs based on average price)

(yen/kg)

| | Apr | May | Jun | Jul | Aug | Sep | Oct | Nov | Dec | Jan | Feb | Mar | Average |
|----------|-----|-----|-----|-----|-----|-----|-----|-----|-----|-----|-----|-----|---------|
| FY2019/3 | 270 | 280 | 353 | 411 | 353 | 303 | 285 | 292 | 328 | 340 | 340 | 338 | 324 |
| FY2020/3 | 355 | 360 | 365 | 360 | 312 | 305 | 288 | 300 | 300 | 296 | 288 | 274 | 317 |
| FY2021/3 | 260 | 260 | 250 | 237 | 235 | | | | | | | | 248 |

OMarket Trend in Overseas Cutout Value Prices

U.S. Beef Boxed cutout, Choice 1-3, 600-900 lbs

Source: U.S. Meat Export Federation

(US\$/cwt)

| | Apr | May | Jun | Jul | Aug | Sep | Oct | Nov | Dec | Jan | Feb | Mar | Average |
|----------|-------|-------|-------|-------|-------|-------|-------|-------|-------|-------|-------|-------|---------|
| FY2019/3 | 215.3 | 229.3 | 221.0 | 206.3 | 209.2 | 206.1 | 208.2 | 214.6 | 213.6 | 215.0 | 217.8 | 227.5 | 215.3 |
| FY2020/3 | 230.3 | 223.6 | 221.3 | 214.8 | 230.2 | 221.4 | 219.7 | 235.5 | 217.2 | 211.9 | 207.6 | 228.1 | 221.8 |
| FY2021/3 | 241.9 | 405.8 | 242.3 | 203.2 | | | | | | | | | 91.1 |

U.S. Pork Cutout composite carcass, 53-54% lean

Source: U.S. Meat Export Federation

(US\$/cwt)

| | Apr | May | Jun | Jul | Aug | Sep | Oct | Nov | Dec | Jan | Feb | Mar | Average |
|----------|------|-------|------|------|------|------|------|------|------|------|------|------|---------|
| FY2019/3 | 68.0 | 73.9 | 83.3 | 81.1 | 68.4 | 75.0 | 78.6 | 81.1 | 71.6 | 69.4 | 62.8 | 72.4 | 73.8 |
| FY2020/3 | 84.7 | 85.1 | 80.3 | 77.4 | 83.7 | 71.0 | 76.4 | 83.4 | 79.2 | 74.7 | 64.9 | 72.8 | 77.8 |
| FY2021/3 | 65.8 | 105.8 | 68.5 | 67.9 | | | | | | | | | 25.7 |

OMarket Trend in Overseas Livestock Prices

Live U.S. Fattening Pig Prices (Pig sales price)

Source: Agriculture & Livestock Industries Corporation (all graphs based on average price)

(US¢/lb)

| | Apr | May | Jun | Jul | Aug | Sep | Oct | Nov | Dec | Jan | Feb | Mar | Average |
|----------|------|------|------|------|------|------|------|------|------|------|------|------|---------|
| FY2019/3 | 39.9 | 46.9 | 57.0 | 55.4 | 37.9 | 38.4 | 47.5 | 42.2 | 38.6 | 40.5 | 39.0 | 42.5 | 43.8 |
| FY2020/3 | 57.7 | 59.6 | 56.6 | 53.1 | 55.5 | 41.7 | 44.7 | 42.3 | 42.3 | 43.4 | 40.6 | 43.6 | 48.4 |
| FY2021/3 | 36.1 | 46.5 | 34.3 | 34.2 | | | | | | | | | 12.6 |

Live Australian Fattening Cattle Prices (Cattle sales price)

Source: Agriculture & Livestock Industries Corporation (all graphs based on average price)

(A\$/kg)

| | Apr | May | Jun | Jul | Aug | Sep | Oct | Nov | Dec | Jan | Feb | Mar | Average |
|-----------|-------|-------|-------|-------|-------|-------|-------|-------|-------|-------|-------|-------|---------|
| FY 2019/3 | 487.8 | 468.6 | 470.3 | 485.4 | 480.0 | 497.3 | 521.6 | 553.0 | 543.0 | 535.0 | 521.3 | 482.0 | 503.8 |
| FY 2020/3 | 521.3 | 524.0 | 522.5 | 535.0 | 549.2 | 549.5 | 559.5 | 589.6 | 575.0 | 563.0 | 618.3 | 621.3 | 560.7 |
| FY2021/3 | 563.8 | 574.6 | 614.3 | 634.0 | | | | | | | | | 198.9 |

Uruguay Cattle Prices, >380kg

Source: Meat & Livestock Australia Ltd

(US\$/lwt)

| | 4月 | 5月 | 6月 | 7月 | 8月 | 9月 | 10月 | 11月 | 12月 | 1月 | 2月 | 3月 | Average |
|----------|-------|-------|-------|-------|-------|-------|-------|-------|-------|-------|-------|-------|---------|
| FY2019/3 | 173.5 | 189.9 | 210.2 | 220.6 | 223.5 | 225.6 | 229.5 | 234.5 | 226.5 | 215.8 | 210.8 | 199.3 | 213.9 |
| FY2020/3 | 181.0 | 189.9 | 210.2 | 220.6 | 223.5 | 225.6 | 229.5 | 234.5 | 226.5 | 215.8 | 210.8 | 199.3 | 213.9 |
| FY2021/3 | 171.9 | 183.2 | 188.5 | 191.3 | 201.4 | | | | | | | | |

OMarket Trends in Grain Feed Prices

Imported Corn Prices

Source: Agriculture & Livestock Industries Corporation (all graphs based on average price)

(yen/t)

| | Apr | May | Jun | Jul | Aug | Sep | Oct | Nov | Dec | Jan | Feb | Mar | Average |
|----------|--------|--------|--------|--------|--------|--------|--------|--------|--------|--------|--------|--------|---------|
| FY2019/3 | 21,701 | 22,893 | 23,508 | 24,440 | 24,168 | 24,049 | 24,110 | 24,010 | 24,127 | 23,287 | 23,386 | 24,109 | 23,649 |
| FY2020/3 | 24,274 | 23,736 | 23,256 | 23,355 | 24,091 | 23,607 | 23,633 | 23,250 | 22,821 | 23,234 | 23,329 | 23,466 | 23,504 |
| FY2021/3 | 23,853 | 22,861 | 21,375 | 20,471 | | | | | | | | | 22,140 |

Mixed Feed Prices

Source: Agriculture & Livestock Industries Corporation (all graphs based on average price)

(yen/t)

| | Apr | May | Jun | Jul | Aug | Sep | Oct | Nov | Dec | Jan | Feb | Mar | Average |
|----------|--------|--------|--------|--------|--------|--------|--------|--------|--------|--------|--------|--------|---------|
| FY2019/3 | 60,944 | 60,924 | 60,894 | 62,328 | 62,321 | 62,408 | 61,732 | 61,854 | 61,906 | 62,529 | 62,497 | 62,586 | 61,910 |
| FY2020/3 | 61,917 | 61,999 | 61,981 | 61,635 | 61,652 | 61,670 | 60,356 | 60,394 | 60,373 | 61,065 | 61,046 | 61,075 | 61,264 |
| FY2021/3 | 60,455 | 60,515 | 60,497 | | | | | | | | | | 60,489 |

CBOT corn futures market price(The latest closing price as of the end of the month)

Source: Agriculture & Livestock Industries Corporation (all graphs based on average price)

(do | ar/bushe |)

| | Apr | May | Jun | Jul | Aug | Sep | Oct | Nov | Dec | Jan | Feb | Mar | Average |
|----------|------|------|------|------|------|------|------|------|------|------|------|------|---------|
| FY2018/3 | 3.58 | 3.72 | 3.71 | 3.74 | 3.42 | 3.55 | 3.46 | 3.42 | 3.51 | 3.62 | 3.75 | 3.88 | 3.61 |
| FY2019/3 | 3.93 | 3.94 | 3.50 | 3.72 | 3.51 | 3.56 | 3.63 | 3.67 | 3.75 | 3.77 | 3.62 | 3.62 | 3.69 |
| FY2020/3 | 3.58 | 4.27 | 4.20 | 4.00 | 3.58 | | | | | | | | 3.93 |

CBOT soybean futures market price(The latest closing price as of the end of the month)

Source: Agriculture & Livestock Industries Corporation (all graphs based on average price)

(do | ar/bushe |)

| | Apr | May | Jun | Jul | Aug | Sep | Oct | Nov | Dec | Jan | Feb | Mar | Average |
|----------|-------|-------|------|-------|------|------|------|------|------|------|-------|-------|---------|
| FY2018/3 | 9.45 | 9.16 | 9.42 | 10.01 | 9.36 | 9.68 | 9.74 | 9.86 | 9.52 | 9.96 | 10.45 | 10.45 | 9.76 |
| FY2019/3 | 10.38 | 10.19 | 8.59 | 9.04 | 8.33 | 8.46 | 8.39 | 8.95 | 8.83 | 9.15 | 8.98 | 9.00 | 9.02 |
| FY2020/3 | 8.18 | 8.78 | 9.00 | 8.64 | 8.57 | | | | | | | | 8.63 |

Source: Agriculture & Livestock Industries Corporation

Notes: 1. Boneless cuts equivalent

2. Figures for stocks are estimated by ALIC

| FY 2019/3 | | | | | | | | | | | | | (t) |
|------------------------------|---------|---------|---------|---------|---------|---------|---------|---------|---------|---------|---------|---------|---------|
| | Apr | May | Jun | Jul | Aug | Sep | Oct | Nov | Dec | Jan | Feb | Mar | Total |
| Supplied Quantity | 90,885 | 80,543 | 73,646 | 95,559 | 83,510 | 77,708 | 80,200 | 86,010 | 78,441 | 75,433 | 64,981 | 65,626 | 952,542 |
| Production | 28,775 | 26,407 | 26,327 | 30,058 | 25,781 | 25,454 | 28,779 | 34,325 | 30,829 | 24,868 | 24,875 | 26,378 | 332,856 |
| Imports | 62,110 | 54,136 | 47,319 | 65,501 | 57,729 | 52,254 | 51,421 | 51,685 | 47,612 | 50,565 | 40,106 | 39,248 | 619,686 |
| Estimated Marketing Quantity | 89,694 | 74,517 | 71,011 | 86,244 | 75,608 | 77,971 | 79,347 | 83,107 | 83,977 | 72,814 | 64,721 | 71,357 | 930,368 |
| Domestic | 28,976 | 26,421 | 26,014 | 29,789 | 25,493 | 24,258 | 28,570 | 33,022 | 31,015 | 25,232 | 24,678 | 26,350 | 329,818 |
| Imported | 60,718 | 48,096 | 44,997 | 56,455 | 50,115 | 53,713 | 50,777 | 50,085 | 52,962 | 47,582 | 40,043 | 45,007 | 600,550 |
| Estimated Ending Stock | 98,488 | 104,243 | 106,611 | 115,645 | 123,281 | 122,731 | 123,268 | 125,754 | 119,768 | 122,130 | 122,055 | 115,940 | - |
| Domestic | 9,026 | 8,741 | 8,787 | 8,775 | 8,797 | 9,706 | 9,599 | 10,485 | 9,849 | 9,228 | 9,090 | 8,734 | - |
| Imported | 89,462 | 95,502 | 97,824 | 106,870 | 114,484 | 113,025 | 113,669 | 115,269 | 109,919 | 112,902 | 112,965 | 107,206 | - |
| FY 2020/3 | | | | | | | | | | | | | (t) |
| | Apr | May | Jun | Jul | Aug | Sep | Oct | Nov | Dec | Jan | Feb | Mar | Total |
| Supplied Quantity | 96,568 | 74,282 | 72,592 | 93,037 | 78,159 | 76,678 | 83,612 | 80,646 | 83,463 | 73,213 | 66,584 | 73,149 | 951,983 |
| Production | 29,292 | 25,719 | 25,308 | 30,506 | 24,602 | 26,144 | 28,234 | 33,361 | 30,348 | 25,803 | 24,758 | 25,572 | 329,647 |
| Imports | 67,276 | 48,563 | 47,284 | 62,531 | 53,557 | 50,534 | 55,378 | 47,285 | 53,115 | 47,410 | 41,826 | 47,577 | 622,336 |
| Estimated Marketing Quantity | 94,950 | 71,450 | 67,882 | 84,957 | 78,879 | 76,157 | 81,831 | 88,627 | 88,100 | 66,511 | 69,669 | 67,927 | 936,940 |
| Domestic | 28,264 | 26,094 | 24,244 | 30,997 | 23,941 | 25,768 | 26,022 | 33,275 | 27,781 | 27,716 | 24,553 | 24,871 | 323,526 |
| Imported | 66,686 | 45,356 | 43,638 | 53,960 | 54,938 | 50,389 | 55,809 | 55,352 | 60,319 | 38,795 | 45,116 | 43,056 | 613,414 |
| Estimated Ending Stock | 117,194 | 119,759 | 124,128 | 131,898 | 130,761 | 130,894 | 132,306 | 123,915 | 118,780 | 125,264 | 121,874 | 126,843 | - |
| Domestic | 9,398 | 8,756 | 9,479 | 8,678 | 8,922 | 8,910 | 10,753 | 10,429 | 12,498 | 10,367 | 10,267 | 10,715 | - |
| Imported | 107,796 | 111,003 | 114,649 | 123,220 | 121,839 | 121,984 | 121,553 | 113,486 | 106,282 | 114,897 | 111,607 | 116,128 | - |
| FY 2021/3 | | | | | | | | | | | | | (t) |
| | Apr | May | Jun | Jul | Aug | Sep | Oct | Nov | Dec | Jan | Feb | Mar | Total |
| Supplied Quantity | 96,131 | 75,284 | 78,534 | 83,300 | | | | | | | | | 333,249 |
| Production | 27,096 | 25,244 | 27,825 | 30,660 | | | | | | | | | 110,825 |
| Imports | 69,035 | 50,040 | 50,709 | 52,640 | | | | | | | | | 222,424 |
| Estimated Marketing Quantity | 80,730 | 69,267 | 78,404 | 86,251 | | | | | | | | | 314,652 |
| Domestic | 26,062 | 24,966 | 28,339 | 30,503 | | | | | | | | | 109,870 |
| Imported | 54,668 | 44,301 | 50,065 | 55,748 | | | | | | | | | 204,782 |
| Estimated Ending Stock | 141,987 | 147,770 | 147,453 | 144,076 | | | | | | | | | - |
| Domestic | 11,492 | 11,536 | 10,575 | 10,306 | | | | | | | | | - |
| Imported | 130,495 | 136,234 | 136,878 | 133,770 | | | | | | | | | - |

OPork

Source: Agriculture & Livestock Industries Corporation

Notes: 1. Boneless cuts equivalent

2. Figures for stocks are estimated by ALIC

FY 2019/3

| | Apr | May | Jun | Jul | Aug | Sep | Oct | Nov | Dec | Jan | Feb | Mar | Total |
|-------------------------------------|---------|---------|---------|---------|---------|---------|---------|---------|---------|---------|---------|---------|-----------|
| Supplied Quantity | 155,640 | 156,379 | 146,250 | 146,793 | 149,789 | 136,647 | 166,031 | 165,599 | 152,484 | 141,180 | 154,228 | 142,661 | 1,813,681 |
| Production | 75,496 | 76,152 | 69,573 | 68,709 | 70,135 | 67,675 | 82,052 | 82,253 | 79,338 | 79,477 | 72,590 | 74,058 | 897,508 |
| Imports | 80,144 | 80,227 | 76,677 | 78,084 | 79,654 | 68,972 | 83,979 | 83,346 | 73,146 | 61,703 | 81,638 | 68,603 | 916,173 |
| Estimated Marketing Quantity | 158,559 | 154,017 | 147,959 | 149,228 | 149,734 | 145,081 | 167,624 | 168,017 | 155,468 | 137,627 | 151,121 | 143,020 | 1,827,455 |
| Domestic | 77,128 | 75,842 | 71,104 | 68,762 | 69,223 | 67,772 | 81,863 | 81,924 | 78,307 | 79,203 | 72,334 | 72,588 | 896,050 |
| Imported | 81,431 | 78,175 | 76,855 | 80,466 | 80,511 | 77,309 | 85,761 | 86,093 | 77,161 | 58,424 | 78,787 | 70,432 | 931,405 |
| Estimated Ending Stock | 177,966 | 180,286 | 178,521 | 176,037 | 176,030 | 167,559 | 165,907 | 163,417 | 160,361 | 163,889 | 166,915 | 166,489 | - |
| Domestic | 18,753 | 19,021 | 17,434 | 17,332 | 18,182 | 18,048 | 18,178 | 18,435 | 19,394 | 19,643 | 19,818 | 21,221 | - |
| Imported | 159,213 | 161,265 | 161,087 | 158,705 | 157,848 | 149,511 | 147,729 | 144,982 | 140,967 | 144,246 | 147,097 | 145,268 | - |

FY 2020/3

| | Apr | May | Jun | Jul | Aug | Sep | Oct | Nov | Dec | Jan | Feb | Mar | Total |
|-------------------------------------|---------|---------|---------|---------|---------|---------|---------|---------|---------|---------|---------|---------|-----------|
| Supplied Quantity | 176,023 | 159,650 | 143,295 | 160,214 | 152,727 | 146,944 | 163,052 | 160,249 | 153,148 | 153,144 | 140,412 | 147,163 | 1,856,021 |
| Production | 77,788 | 75,254 | 67,049 | 74,899 | 67,745 | 68,819 | 79,112 | 77,534 | 80,884 | 80,864 | 73,425 | 79,535 | 902,908 |
| Imports | 98,235 | 84,396 | 76,246 | 85,315 | 84,982 | 78,125 | 83,940 | 82,715 | 72,264 | 72,280 | 66,987 | 67,628 | 953,113 |
| Estimated Marketing Quantity | 152,687 | 142,740 | 142,547 | 153,084 | 146,276 | 149,424 | 162,201 | 166,197 | 163,753 | 146,161 | 141,397 | 145,073 | 1,811,540 |
| Domestic | 76,406 | 76,085 | 65,290 | 76,348 | 68,891 | 69,025 | 79,247 | 75,817 | 81,783 | 80,150 | 71,714 | 77,478 | 898,234 |
| Imported | 76,281 | 66,655 | 77,257 | 76,736 | 77,385 | 80,399 | 82,954 | 90,380 | 81,970 | 66,011 | 69,683 | 67,595 | 913,306 |
| Estimated Ending Stock | 189,766 | 206,606 | 207,284 | 214,359 | 220,743 | 218,205 | 218,968 | 212,979 | 202,275 | 209,212 | 208,119 | 210,137 | - |
| Domestic | 22,544 | 21,643 | 23,332 | 21,828 | 20,615 | 20,351 | 20,128 | 21,804 | 20,806 | 21,474 | 23,077 | 25,062 | - |
| Imported | 167,222 | 184,963 | 183,952 | 192,531 | 200,128 | 197,854 | 198,840 | 191,175 | 181,469 | 187,738 | 185,042 | 185,075 | - |

FY 2021/3

| | Apr | May | Jun | Jul | Aug | Sep | Oct | Nov | Dec | Jan | Feb | Mar | Total |
|-------------------------------------|---------|---------|---------|---------|-----|-----|-----|-----|-----|-----|-----|-----|---------|
| Supplied Quantity | 181,807 | 151,182 | 152,057 | 148,978 | | | | | | | | | 634,024 |
| Production | 80,239 | 71,318 | 72,535 | 73,967 | | | | | | | | | 298,059 |
| Imports | 101,568 | 79,864 | 79,522 | 75,011 | | | | | | | | | 335,965 |
| Estimated Marketing Quantity | 167,907 | 139,324 | 152,572 | 158,510 | | | | | | | | | 618,313 |
| Domestic | 82,085 | 73,523 | 70,031 | 75,708 | | | | | | | | | 301,347 |
| Imported | 85,822 | 65,801 | 82,541 | 82,802 | | | | | | | | | 316,966 |
| Estimated Ending Stock | 223,945 | 235,742 | 235,073 | 225,452 | | | | | | | | | - |
| Domestic | 23,124 | 20,858 | 23,208 | 21,378 | | | | | | | | | - |
| Imported | 200,821 | 214,884 | 211,865 | 204,074 | | | | | | | | | - |

OChicken

Source: Agriculture & Livestock Industries Corporation

Notes:1.Bone in cuts equivalent

2.Figures for stocks are estimated by ALIC

3.The production quantity and the estimated marketing quantity on the domestic one are made public only until February,2010.

FY 2019/3

| | Apr | May | Jun | Jul | Aug | Sep | Oct | Nov | Dec | Jan | Feb | Mar | Total |
|------------------------------|---------|---------|---------|---------|---------|---------|---------|---------|---------|---------|---------|---------|-----------|
| Supplied Quantity | 182,290 | 183,764 | 178,025 | 173,770 | 175,997 | 164,359 | 195,355 | 180,602 | 194,290 | 173,021 | 171,280 | 175,364 | 2,148,117 |
| Production | 132,721 | 136,623 | 134,131 | 128,099 | 125,193 | 124,113 | 140,944 | 137,423 | 147,285 | 131,045 | 129,816 | 135,813 | 1,603,206 |
| Imports | 49,569 | 47,141 | 43,894 | 45,671 | 50,804 | 40,246 | 54,411 | 43,179 | 47,005 | 41,976 | 41,464 | 39,551 | 544,911 |
| Estimated Marketing Quantity | 188,128 | 181,436 | 185,032 | 171,855 | 174,986 | 170,517 | 191,392 | 181,194 | 201,081 | 170,271 | 174,530 | 181,918 | 2,172,340 |
| Domestic | 135,226 | 131,843 | 135,565 | 128,915 | 124,751 | 125,202 | 139,817 | 137,946 | 149,638 | 129,651 | 128,426 | 137,003 | 1,603,983 |
| Imported | 52,902 | 49,593 | 49,467 | 42,940 | 50,235 | 45,315 | 51,575 | 43,248 | 51,443 | 40,620 | 46,104 | 44,915 | 568,357 |
| Estimated Ending Stock | 170,714 | 173,042 | 166,035 | 167,950 | 168,961 | 162,803 | 166,766 | 166,174 | 159,383 | 162,133 | 158,883 | 152,329 | - |
| Domestic | 25,924 | 30,704 | 29,270 | 28,454 | 28,896 | 27,807 | 28,934 | 28,411 | 26,058 | 27,452 | 28,842 | 27,652 | - |
| Imported | 144,790 | 142,338 | 136,765 | 139,496 | 140,065 | 134,996 | 137,832 | 137,763 | 133,325 | 134,681 | 130,041 | 124,677 | - |

FY 2020/3

| | Apr | May | Jun | Jul | Aug | Sep | Oct | Nov | Dec | Jan | Feb | Mar | Total |
|------------------------------|---------|---------|---------|---------|---------|---------|---------|---------|---------|---------|---------|---------|-----------|
| Supplied Quantity | 185,473 | 185,546 | 178,392 | 189,821 | 180,719 | 182,472 | 195,181 | 191,910 | 197,068 | 180,070 | 181,654 | 185,802 | 2,234,109 |
| Production | 138,207 | 138,973 | 135,027 | 136,609 | 130,202 | 128,863 | 143,590 | 143,082 | 152,146 | 138,450 | 137,735 | 139,107 | 1,661,991 |
| Imports | 47,266 | 46,573 | 43,365 | 53,212 | 50,517 | 53,609 | 51,591 | 48,828 | 44,922 | 41,620 | 43,919 | 46,695 | 572,118 |
| Estimated Marketing Quantity | 184,639 | 185,931 | 177,575 | 186,806 | 180,370 | 175,085 | 192,353 | 192,892 | 201,453 | 175,770 | 180,051 | 183,065 | 2,215,991 |
| Domestic | 135,114 | 139,031 | 135,137 | 138,141 | 130,511 | 127,721 | 144,169 | 143,806 | 152,547 | 137,303 | 137,276 | 137,766 | 1,658,522 |
| Imported | 49,525 | 46,900 | 42,438 | 48,665 | 49,859 | 47,364 | 48,184 | 49,086 | 48,906 | 38,467 | 42,775 | 45,299 | 557,469 |
| Estimated Ending Stock | 153,163 | 152,778 | 153,595 | 156,610 | 156,959 | 164,346 | 167,174 | 166,192 | 161,807 | 166,107 | 167,710 | 170,447 | - |
| Domestic | 30,745 | 30,687 | 30,577 | 29,045 | 28,736 | 29,878 | 29,299 | 28,575 | 28,174 | 29,321 | 29,780 | 31,121 | - |
| Imported | 122,418 | 122,091 | 123,018 | 127,565 | 128,223 | 134,468 | 137,875 | 137,617 | 133,633 | 136,786 | 137,930 | 139,326 | - |

FY 2021/3

| | Apr | May | Jun | Jul | Aug | Sep | Oct | Nov | Dec | Jan | Feb | Mar | Total |
|------------------------------|---------|---------|---------|---------|-----|-----|-----|-----|-----|-----|-----|-----|---------|
| Supplied Quantity | 189,071 | 173,373 | 190,240 | 190,972 | | | | | | | | | 743,656 |
| Production | 142,365 | 137,254 | 139,587 | 139,394 | | | | | | | | | 558,600 |
| Imports | 46,706 | 36,119 | 50,653 | 51,578 | | | | | | | | | 185,056 |
| Estimated Marketing Quantity | 187,816 | 175,707 | 188,822 | 191,609 | | | | | | | | | 743,954 |
| Domestic | 146,284 | 143,351 | 142,140 | 128,424 | | | | | | | | | 560,199 |
| Imported | 41,532 | 32,356 | 46,682 | 63,185 | | | | | | | | | 183,755 |
| Estimated Ending Stock | 171,702 | 169,368 | 170,786 | 170,149 | | | | | | | | | - |
| Domestic | 27,202 | 21,105 | 18,552 | 29,522 | | | | | | | | | - |
| Imported | 144,500 | 148,263 | 152,234 | 140,627 | | | | | | | | | - |

O Hams and Sausages

Source: Japan Meat Processor Association

FY 2019/3

(t)

| | Apr | May | Jun | Jul | Aug | Sep | Oct | Nov | Dec | Jan | Feb | Mar | Total |
|-------------------|--------|--------|--------|--------|--------|--------|--------|--------|--------|--------|--------|--------|---------|
| Production | 48,395 | 46,796 | 47,852 | 48,230 | 45,960 | 44,571 | 47,332 | 49,239 | 49,962 | 38,293 | 39,391 | 44,937 | 550,958 |
| Imports | 3,312 | 3,433 | 3,491 | 3,814 | 3,547 | 3,070 | 3,966 | 3,773 | 3,679 | 3,195 | 3,286 | 3,154 | 41,721 |
| Supplied Quantity | 51,707 | 50,229 | 51,343 | 52,044 | 49,507 | 47,641 | 51,298 | 53,012 | 53,641 | 41,488 | 42,677 | 48,091 | 592,679 |

FY 2020/3

(t)

| | Apr | May | Jun | Jul | Aug | Sep | Oct | Nov | Dec | Jan | Feb | Mar | Total |
|-------------------|--------|--------|--------|--------|--------|--------|--------|--------|--------|--------|--------|--------|---------|
| Production | 49,558 | 45,393 | 45,920 | 48,773 | 46,197 | 44,899 | 47,831 | 49,466 | 50,268 | 38,811 | 41,439 | 46,669 | 555,224 |
| Imports | 4,333 | 3,590 | 3,443 | 3,505 | 4,308 | 4,641 | 3,889 | 4,297 | 4,287 | 3,681 | 2,936 | 3,491 | 46,401 |
| Supplied Quantity | 53,891 | 48,983 | 49,363 | 52,278 | 50,505 | 49,540 | 51,720 | 53,763 | 54,555 | 42,492 | 44,375 | 50,160 | 601,625 |

FY 2021/3

(t)

| | Apr | May | Jun | Jul | Aug | Sep | Oct | Nov | Dec | Jan | Feb | Mar | Total |
|-------------------|--------|--------|--------|-----|-----|-----|-----|-----|-----|-----|-----|-----|---------|
| Production | 50,025 | 45,342 | 47,604 | | | | | | | | | | 142,971 |
| Imports | 4,610 | 3,049 | 3,247 | | | | | | | | | | 10,906 |
| Supplied Quantity | 54,635 | 48,391 | 50,851 | | | | | | | | | | 153,877 |

Skim milk (CIF, ALIC purchase price, yen/kg)

Source: Agriculture & Livestock Industries Corporation (all graphs based on average price)

| | Apr | May | Jun | Jul | Aug | Sep | Oct | Nov | Dec | Jan | Feb | Mar | Average |
|-----------|-----|-----|-----|-----|-----|-----|-----|-----|-----|-----|-----|-----|---------|
| FY 2019/3 | 205 | 253 | 202 | 209 | 223 | 239 | 223 | 231 | 231 | 210 | 228 | 229 | 224 |
| FY 2020/3 | 242 | 242 | 303 | 283 | 288 | 280 | 283 | 286 | 267 | 290 | 314 | 315 | 283 |
| FY 2021/3 | 309 | 321 | 305 | 304 | | | | | | | | | 310 |

Natural cheese (CIF, yen/kg)

Source: Agriculture & Livestock Industries Corporation (all graphs based on average price)

| | Apr | May | Jun | Jul | Aug | Sep | Oct | Nov | Dec | Jan | Feb | Mar | Average |
|-----------|-----|-----|-----|-----|-----|-----|-----|-----|-----|-----|-----|-----|---------|
| FY 2019/3 | 485 | 488 | 487 | 482 | 487 | 491 | 510 | 490 | 508 | 496 | 478 | 486 | 491 |
| FY 2020/3 | 469 | 475 | 474 | 460 | 453 | 460 | 463 | 478 | 479 | 471 | 476 | 479 | 470 |
| FY 2021/3 | 458 | 452 | 475 | 463 | | | | | | | | | 462 |

Family Income and Expenditure Survey :Quantity Purchase(g)

Source:Ministry of Internal Affairs and Communications "Family Income and Expenditure Survey"
Two-or-more-person Households(Not including agricultural,forestry and fisheries households)

| 2018 | Jan | Feb | Mar | Apr | May | Jun | Jul | Aug | Sep | Oct | Nov | Dec |
|-------------------------------|-------|-------|-------|-------|-------|-------|-------|-------|-------|-------|-------|-------|
| Hams and Sausages, and Bacons | 709 | 669 | 759 | 754 | 828 | 807 | 795 | 808 | 753 | 769 | 806 | 976 |
| Beef | 526 | 485 | 548 | 570 | 541 | 525 | 544 | 589 | 536 | 552 | 556 | 748 |
| Pork | 1,787 | 1,691 | 1,816 | 1,771 | 1,817 | 1,792 | 1,747 | 1,687 | 1,773 | 1,840 | 1,850 | 1,943 |
| Chicken | 1,382 | 1,342 | 1,345 | 1,378 | 1,397 | 1,366 | 1,294 | 1,285 | 1,368 | 1,480 | 1,461 | 1,765 |

| 2019 | Jan | Feb | Mar | Apr | May | Jun | Jul | Aug | Sep | Oct | Nov | Dec |
|-------------------------------|-------|-------|-------|-------|-------|-------|-------|-------|-------|-------|-------|-------|
| Hams and Sausages, and Bacons | 685 | 672 | 766 | 756 | 817 | 805 | 843 | 814 | 770 | 811 | 829 | 987 |
| Beef | 548 | 492 | 571 | 521 | 560 | 525 | 522 | 558 | 484 | 478 | 561 | 738 |
| Pork | 1,871 | 1,715 | 1,876 | 1,720 | 1,704 | 1,768 | 1,720 | 1,630 | 1,698 | 1,808 | 1,784 | 1,884 |
| Chicken | 1,429 | 1,397 | 1,428 | 1,365 | 1,418 | 1,437 | 1,298 | 1,244 | 1,343 | 1,483 | 1,452 | 1,625 |

| 2020 | Jan | Feb | Mar | Apr | May | Jun | Jul | Aug | Sep | Oct | Nov | Dec |
|-------------------------------|-------|-------|-------|-------|-------|-------|-------|-----|-----|-----|-----|-----|
| Hams and Sausages, and Bacons | 680 | 734 | 851 | 890 | 908 | 845 | 886 | | | | | |
| Beef | 505 | 522 | 600 | 655 | 719 | 564 | 569 | | | | | |
| Pork | 1,737 | 1,810 | 2,044 | 2,058 | 2,024 | 1,881 | 1,845 | | | | | |
| Chicken | 1,358 | 1,402 | 1,617 | 1,805 | 1,716 | 1,599 | 1,530 | | | | | |

Family Income and Expenditure Survey :Expenditure(yen)

Source:Ministry of Internal Affairs and Communications "Family Income and Expenditure Survey"
Two-or-more-person Households(Not including agricultural,forestry and fisheries households)

| 2018 | Jan | Feb | Mar | Apr | May | Jun | Jul | Aug | Sep | Oct | Nov | Dec |
|-------------------------------|-------|-------|-------|-------|-------|-------|-------|-------|-------|-------|-------|-------|
| Hams and Sausages, and Bacons | 1,091 | 1,051 | 1,176 | 1,190 | 1,251 | 1,248 | 1,318 | 1,247 | 1,181 | 1,196 | 1,285 | 1,663 |
| Beef | 1,756 | 1,584 | 1,726 | 1,719 | 1,749 | 1,692 | 1,676 | 1,874 | 1,665 | 1,735 | 1,698 | 2,997 |
| Pork | 2,626 | 2,488 | 2,521 | 2,492 | 2,565 | 2,495 | 2,483 | 2,428 | 2,546 | 2,605 | 2,584 | 2,758 |
| Chicken | 1,389 | 1,306 | 1,320 | 1,281 | 1,316 | 1,231 | 1,194 | 1,163 | 1,302 | 1,371 | 1,339 | 1,665 |

| 2019 | Jan | Feb | Mar | Apr | May | Jun | Jul | Aug | Sep | Oct | Nov | Dec |
|-------------------------------|-------|-------|-------|-------|-------|-------|-------|-------|-------|-------|-------|-------|
| Hams and Sausages, and Bacons | 1,053 | 1,040 | 1,189 | 1,169 | 1,246 | 1,278 | 1,324 | 1,281 | 1,201 | 1,241 | 1,318 | 1,693 |
| Beef | 1,810 | 1,515 | 1,671 | 1,682 | 1,777 | 1,625 | 1,518 | 1,853 | 1,560 | 1,522 | 1,649 | 2,996 |
| Pork | 2,592 | 2,425 | 2,538 | 2,394 | 2,393 | 2,408 | 2,358 | 2,335 | 2,438 | 2,555 | 2,516 | 2,685 |
| Chicken | 1,348 | 1,298 | 1,332 | 1,271 | 1,296 | 1,268 | 1,185 | 1,121 | 1,242 | 1,312 | 1,309 | 1,605 |

| 2020 | Jan | Feb | Mar | Apr | May | Jun | Jul | Aug | Sep | Oct | Nov | Dec |
|-------------------------------|-------|-------|-------|-------|-------|-------|-------|-----|-----|-----|-----|-----|
| Hams and Sausages, and Bacons | 1,056 | 1,106 | 1,283 | 1,345 | 1,405 | 1,337 | 1,401 | | | | | |
| Beef | 1,704 | 1,664 | 1,848 | 1,976 | 2,268 | 1,811 | 1,797 | | | | | |
| Pork | 2,469 | 2,545 | 2,820 | 2,907 | 2,942 | 2,678 | 2,671 | | | | | |
| Chicken | 1,309 | 1,310 | 1,451 | 1,574 | 1,578 | 1,408 | 1,364 | | | | | |

〒141-6013 東京都品川区大崎2-1-1
ThinkPark Tower
日本ハム株式会社 広報IR部
電話: 03-4555-8024
FAX: 03-4555-8189

Public & Investor Relations Department
NH Foods Ltd.
ThinkPark Tower
2-1-1 Osaki, Shinagawa-ku, Tokyo 141-6013
Tel: +81-3-4555-8024 Fax: +81-3-4555-8189