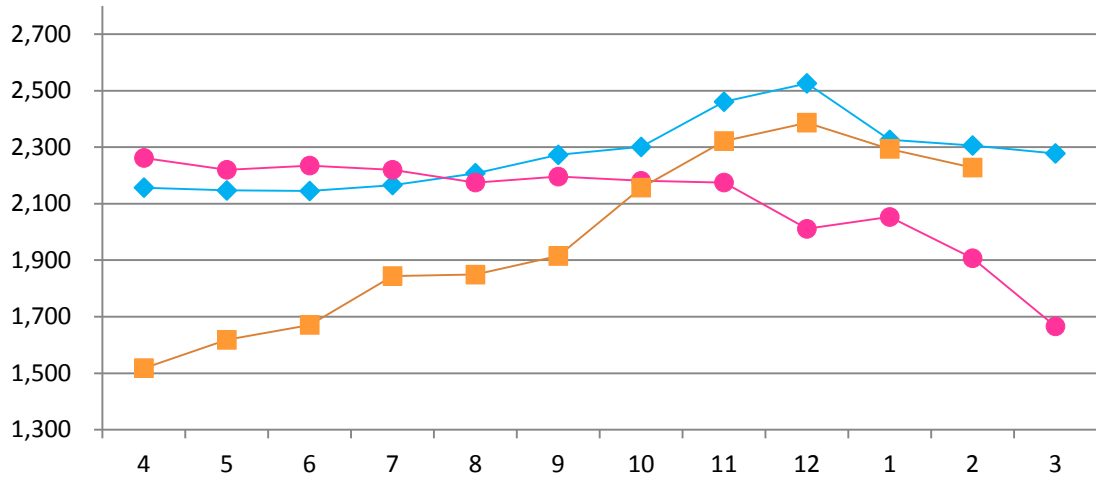


2021年2月度 市場動向資料集

February, 2021 Market Trends

日本ハム株式会社
NH Foods Ltd.
March, 25, 2021

【去勢和牛 A-3卸売価格(東京市場、税込)】
Tokyo Market A-3 Wagyu Steer Prices, Tax Included
(¥/kg)

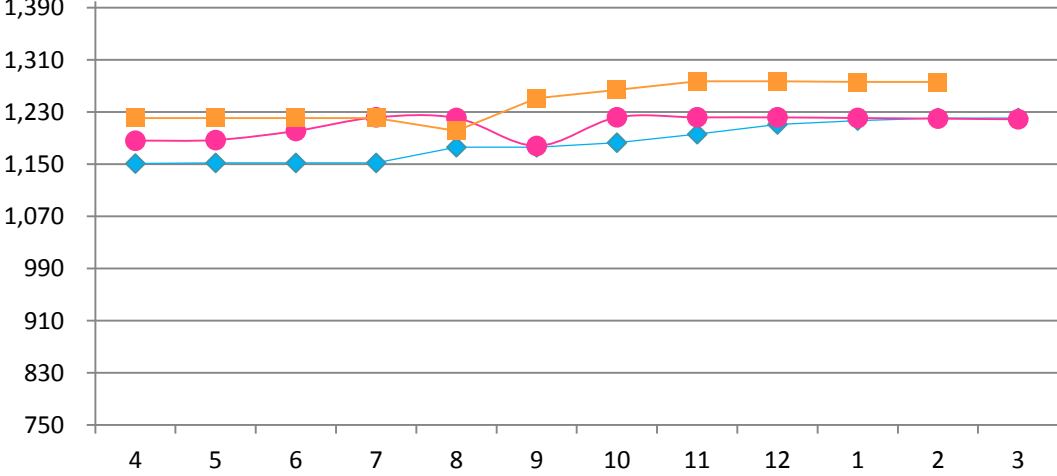


(¥/kg)

前期差 Comparison with the previous year	前月差 Comparison with The previous month
321	-66

グラフ資料出所: 東京食肉市場株式会社
Date Source: Tokyo Meat Market Co. Ltd

【豪州産チルドビーフ ショートグレインフルセット価格】
Australian Chilled Beef [Full Set (Short Grain Fed)] Prices
(¥/kg)



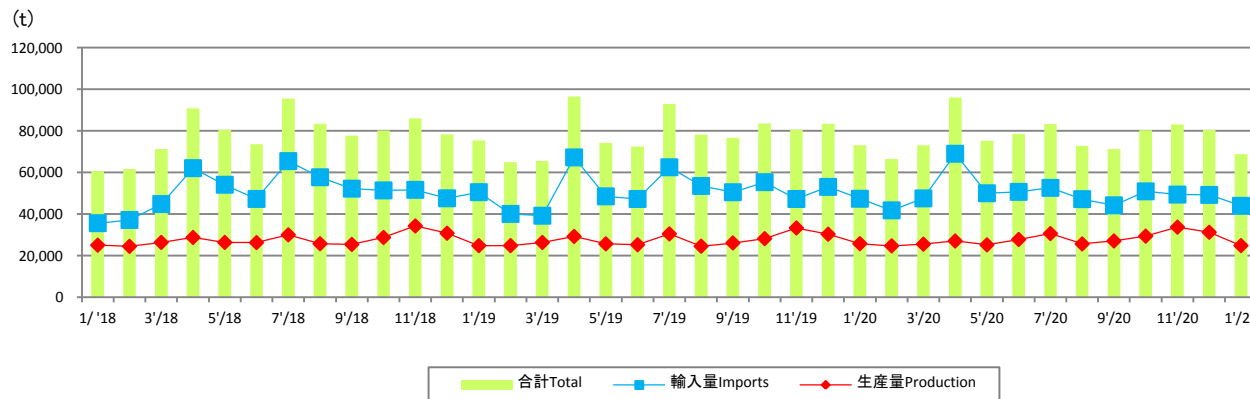
(¥/kg)

前期差 Comparison with the previous year	前月差 Comparison with The previous month
56	0

グラフ資料出所: 農畜産業振興機構(全て単純平均単価)
Date Source: Agriculture & Livestock Industries Corporation
(all graphs based on average prices)

【生産量と輸入量】

Production and Imports



グラフ資料出所: 農畜産業振興機構

Source: Agriculture & Livestock Industries Corporation

注: 数量は部分肉ベース。輸入量は煮沸肉並びにくず肉のうちほほ肉及び頭肉のみ含む。

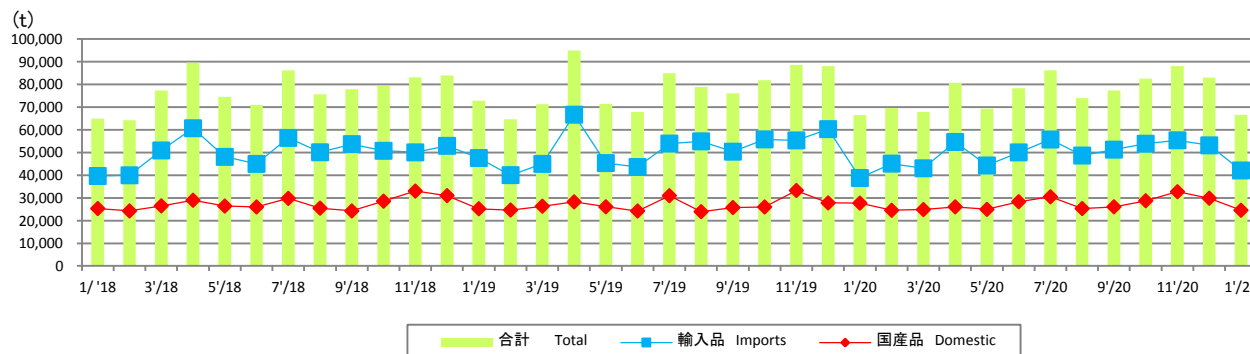
Notes: 1. Boneless cuts equivalent

2. Figures for stocks are estimated by ALIC

	前期差 Comparison with The previous year	前月差 Comparison with The previous month
輸入量 Imports	-3,405	-5,244
生産量 Production	-925	-6,407

【推定出回り量】

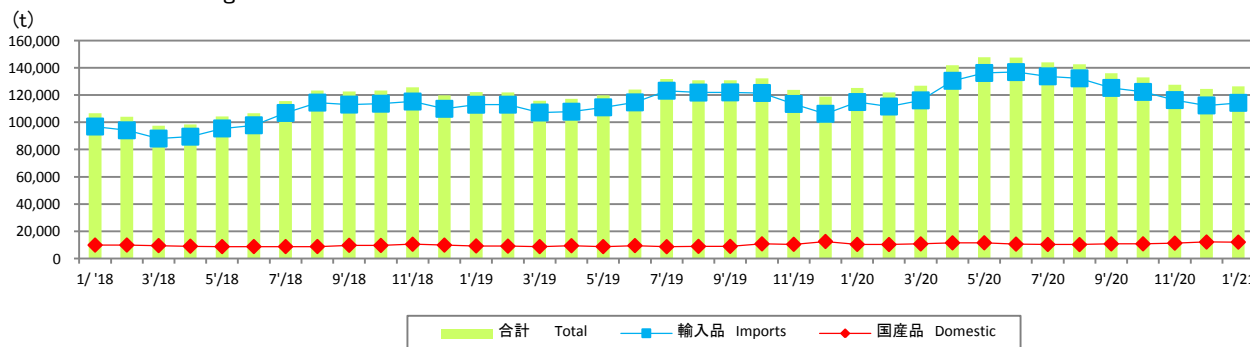
Estimated Marketing Quantity



	前期差 Comparison with The previous year	前月差 Comparison with The previous month
輸入品 Imports	3,310	-11,068
国産品 Domestic	-3,144	-5,305

【推定期末在庫】

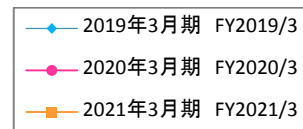
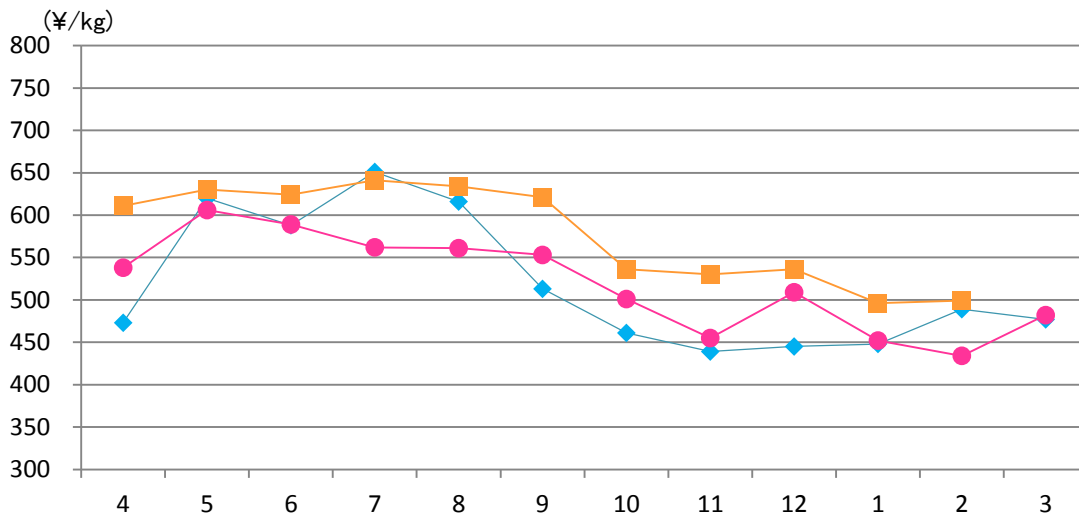
Estimated Ending Stock



	前期差 Comparison with The previous year	前月差 Comparison with The previous month
輸入品 Imports	-594	1,900
国産品 Domestic	1,655	-77

【豚肉枝肉卸売価格 上物 東京食肉市場平均価格 税込】

Pork Carcass Prices (Tokyo Market Excellent Grade, monthly average, Tax Included)



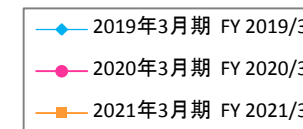
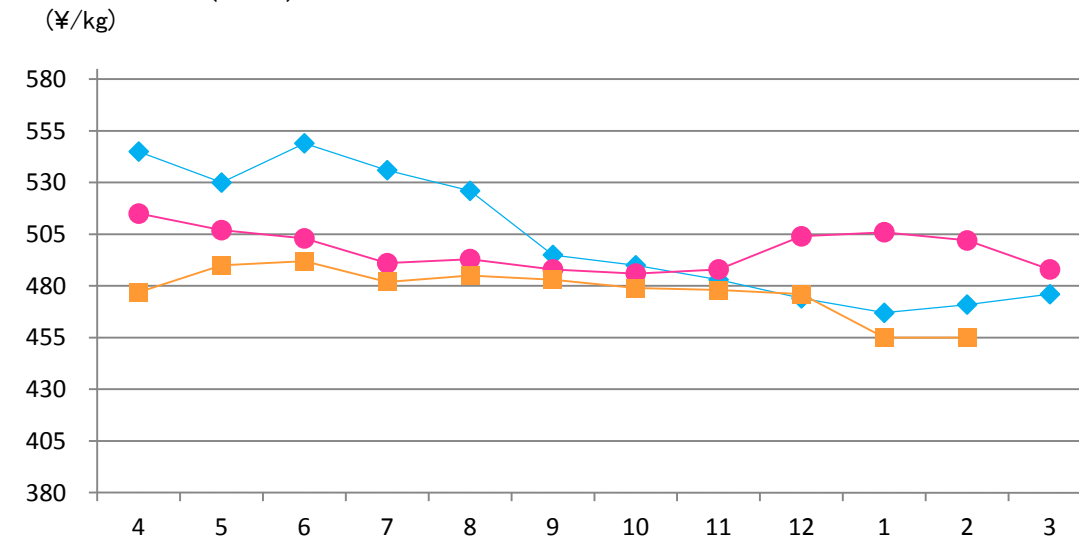
(¥/kg)

前期差 Comparison with the previous year	前月差 Comparison with The previous month
65	3

グラフ資料出所: 東京食肉市場株式会社
Date Source: Tokyo Meat Market Co. Ltd

【U.S.冷凍ウデ(英名:ピクニック)価格】

U.S. Frozen Pork (Picnic) Prices



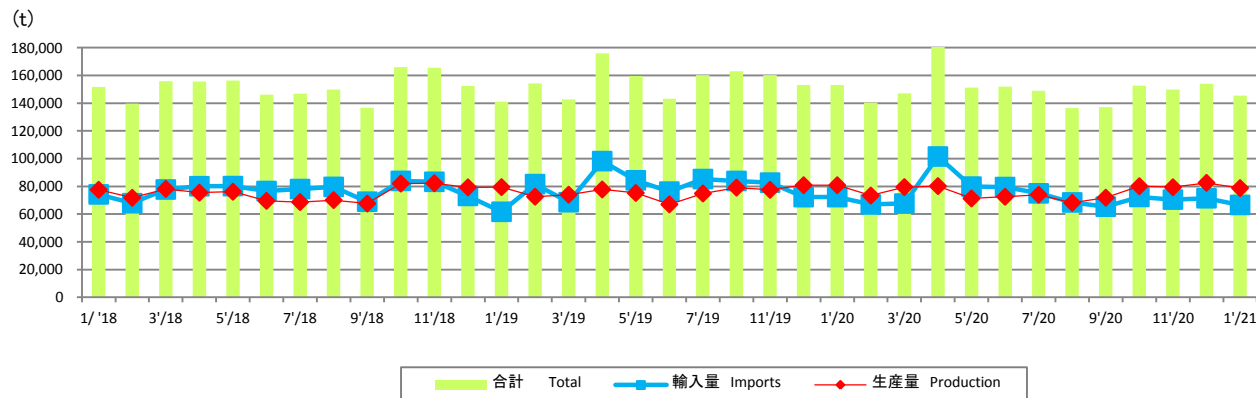
(¥/kg)

前期差 Comparison with the previous year	前月差 Comparison with The previous month
-47	0

グラフ資料出所: 農畜産業振興機構(全て単純平均単価)
Date Source: Agriculture & Livestock Industries Corporation
(all graphs based on average prices)

【生産量と輸入量】

Production and Imports



グラフ資料出所: 農畜産業振興機構

Source: Agriculture & Livestock Industries Corporation

注: 数量は部分肉ベース。輸入量は煮沸肉並びにくず肉のうちほほ肉及び頭肉のみ含む。

Notes: 1. Boneless cuts equivalent

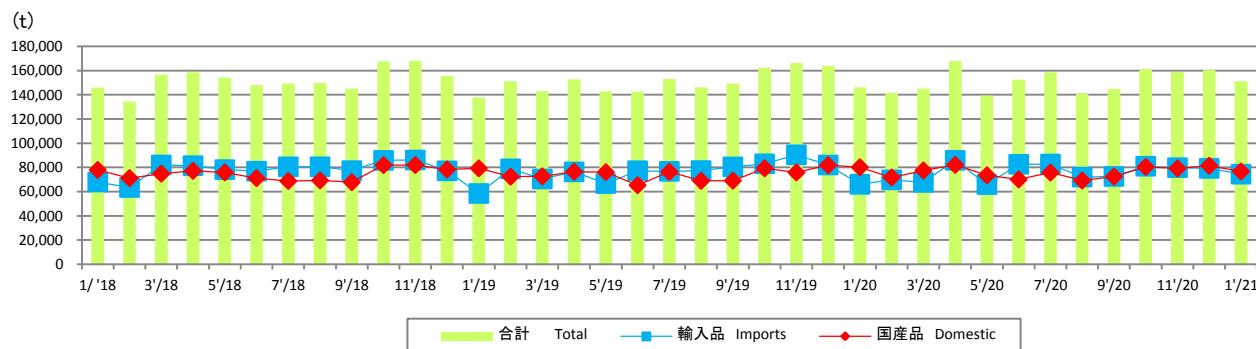
2. Figures for stocks are estimated by ALIC

(t)

	前期差 Comparison with The previous year	前月差 Comparison with The previous month
輸入量 Imports	-5,660	-4,854
生産量 Production	-2,064	-3,755

【推定出回り量】

Estimated Marketing Quantity

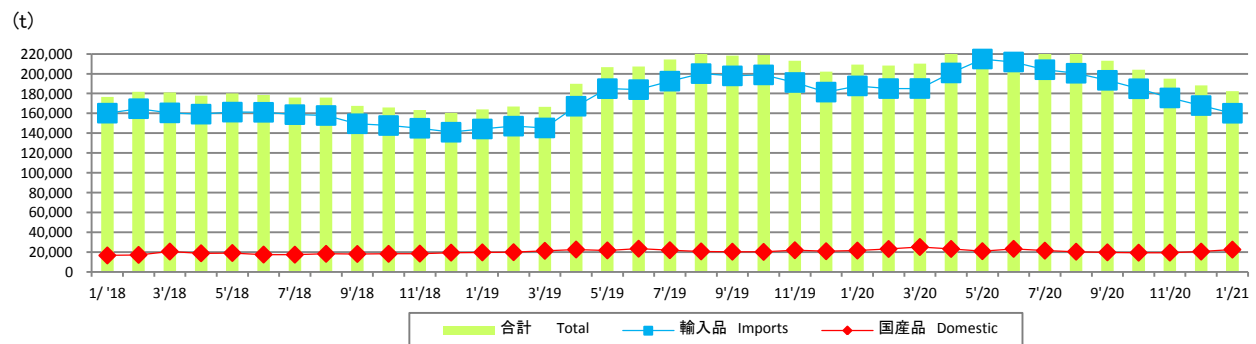


(t)

	前期差 Comparison with The previous year	前月差 Comparison with The previous month
輸入品 Imports	8,375	-4,769
国産品 Domestic	-3,493	-4,707

【推定期末在庫】

Estimated Ending Stock

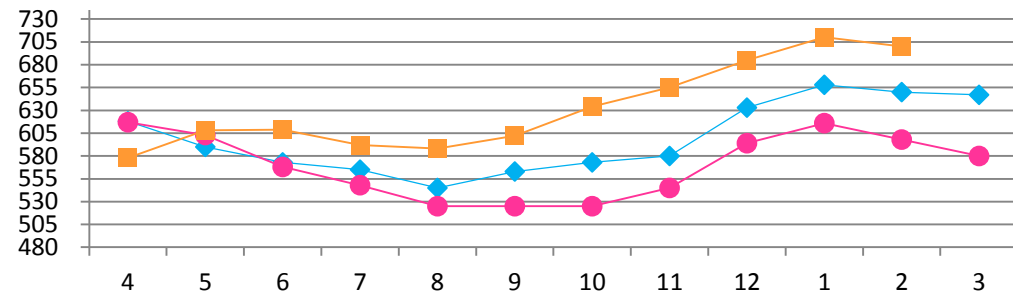


(t)

	前期差 Comparison with The previous year	前月差 Comparison with The previous month
輸入品 Imports	-27,607	-7,766
国産品 Domestic	959	2,019

【鶏肉卸売価格(モモ肉、税抜)】

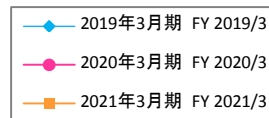
Domestic Chicken Thigh Meat Wholesale Prices
(¥/kg)



グラフ資料出所: 食品産業新聞社畜産日報掲載分から単純平均単価

Date Source: "DAILY MEAT & LIVESTOCK"

which is a trade business paper published in Japan(all graphs based on Average Price)

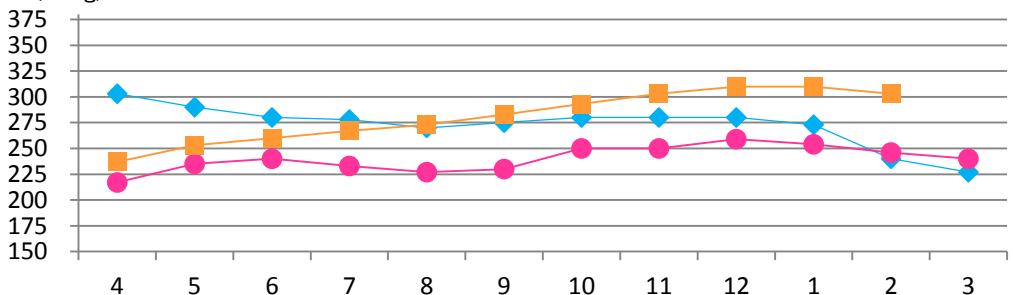


(¥/kg)

前期差 Comparison with the previous year	前月差 Comparison with The previous month
102	-10

【鶏肉卸売価格(ムネ肉、税抜)】

Domestic Chicken Breast Meat Wholesale Prices
(¥/kg)

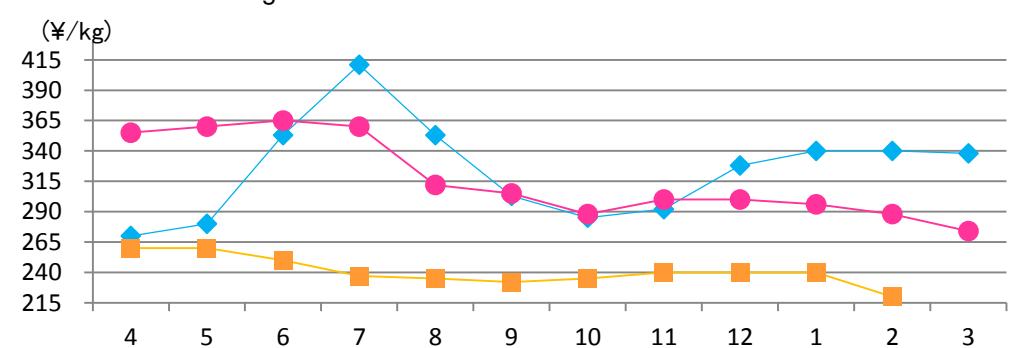


(¥/kg)

前期差 Comparison with the previous year	前月差 Comparison with The previous month
57	-7

【ブラジル産もも肉価格】

Brazilian Chicken Thigh Prices
(¥/kg)

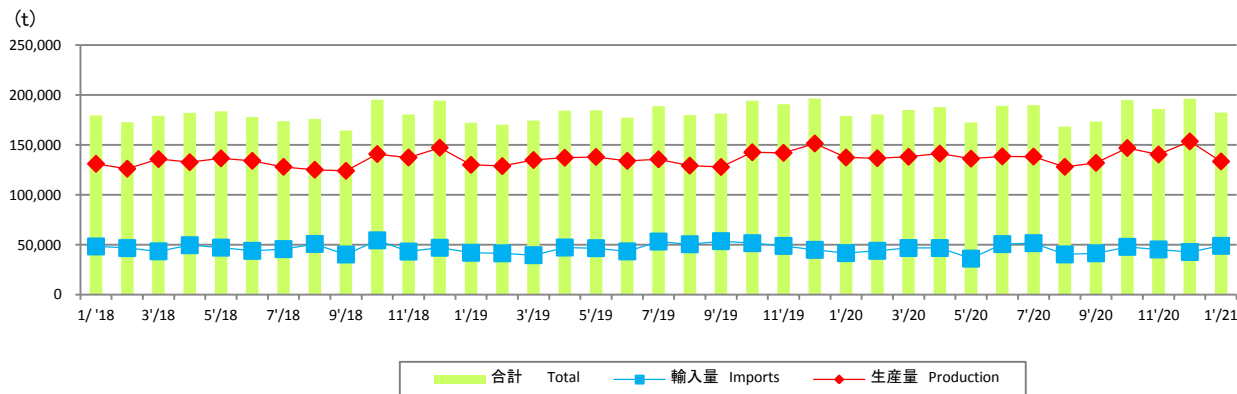


(¥/kg)

前期差 Comparison with the previous year	前月差 Comparison with The previous month
-68	-20

【生産量と輸入量】

Production and Imports



グラフ資料出所: 農畜産業振興機構

Source: Agriculture & Livestock Industries Corporation

注: 生産量は骨付き肉ベース。成鶏肉を含む。輸入量には鶏肉以外の家禽肉を含まない。

注: 生産量、国産品の推定出回り量は2010年2月をもって公表終了。

Notes: 1. *Bone in cuts equivalent

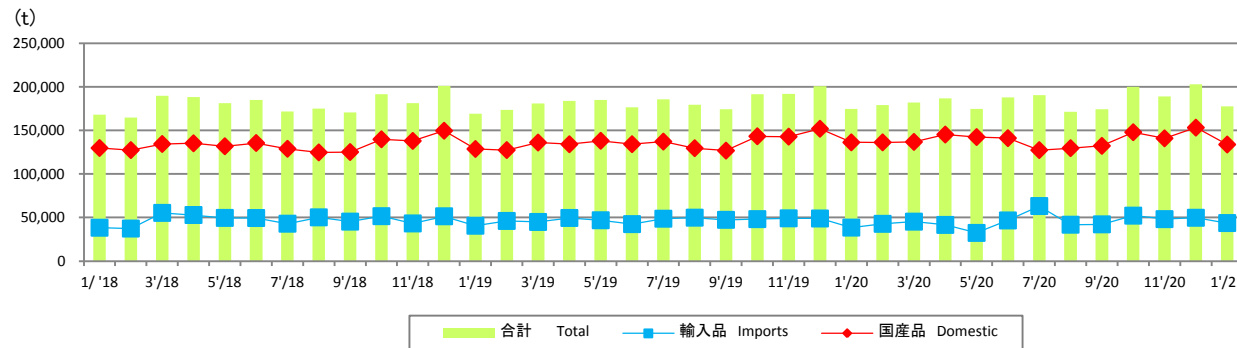
2. Figures for stocks are estimated by ALIC

3. *The production quantity and the estimated marketing quantity on the domestic one are made public only until February,2010.

	前期差 Comparison with The previous year	前月差 Comparison with The previous month
輸入量 Imports	7,310	6,219
生産量 Production	-3,951	-20,102

【推定出回り量】

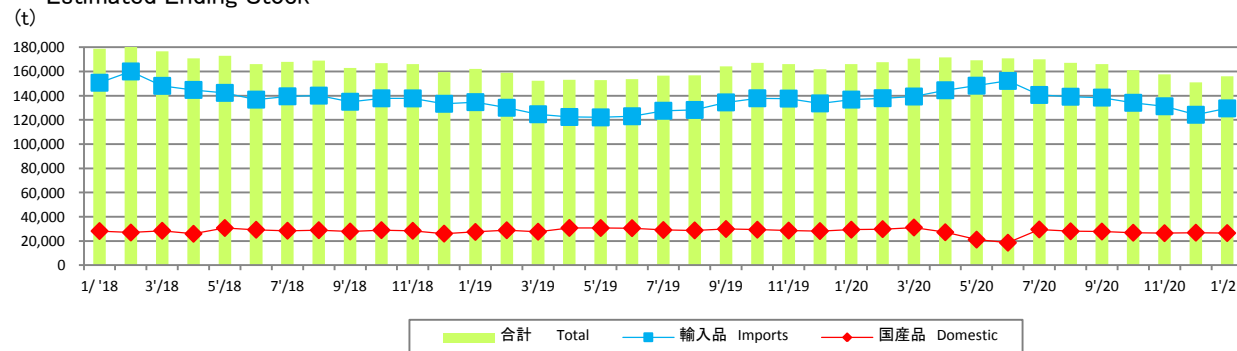
Estimated Marketing Quantity



	前期差 Comparison with The previous year	前月差 Comparison with The previous month
輸入品 Imports	5,196	-6,070
国産品 Domestic	-2,477	-19,362

【推定期末在庫】

Estimated Ending Stock

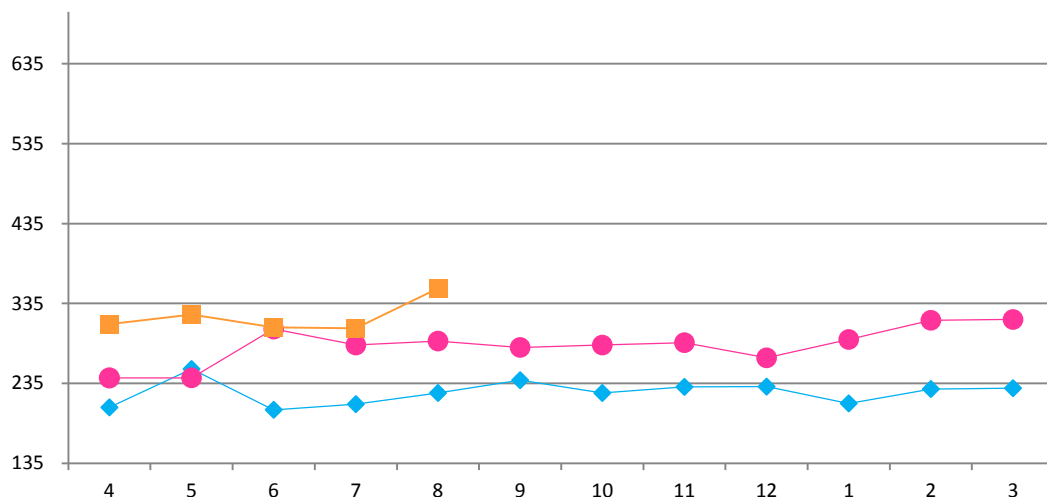


	前期差 Comparison with The previous year	前月差 Comparison with The previous month
輸入品 Imports	-7,267	5,267
国産品 Domestic	-2,809	-327

【脱脂粉乳輸入価格(CIF)】

Skim milk (CIF ALIC purchase price)

(¥/kg)



◆ 2019年3月期 FY 2019/3
● 2020年3月期 FY 2020/3
■ 2021年3月期 FY 2021/3

前期差 Comparison with the previous year	前月差 Comparison with The previous month
66	50

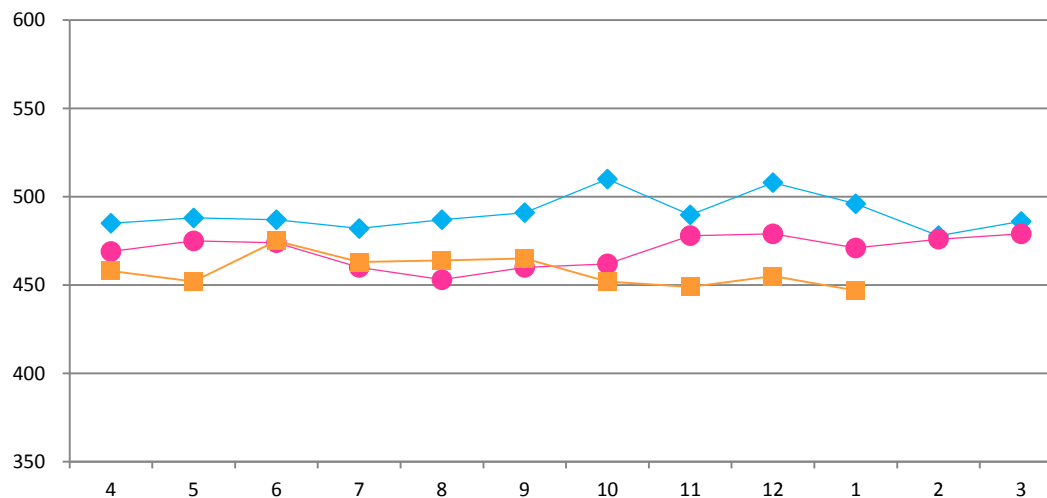
(¥/kg)

グラフ資料出所：農畜産業振興機構(全て単純平均単価)
Source: Agriculture & Livestock Industries Corporation (all graphs based on average prices)

【ナチュラルチーズ輸入価格】

Natural cheese (CIF)

(¥/kg)



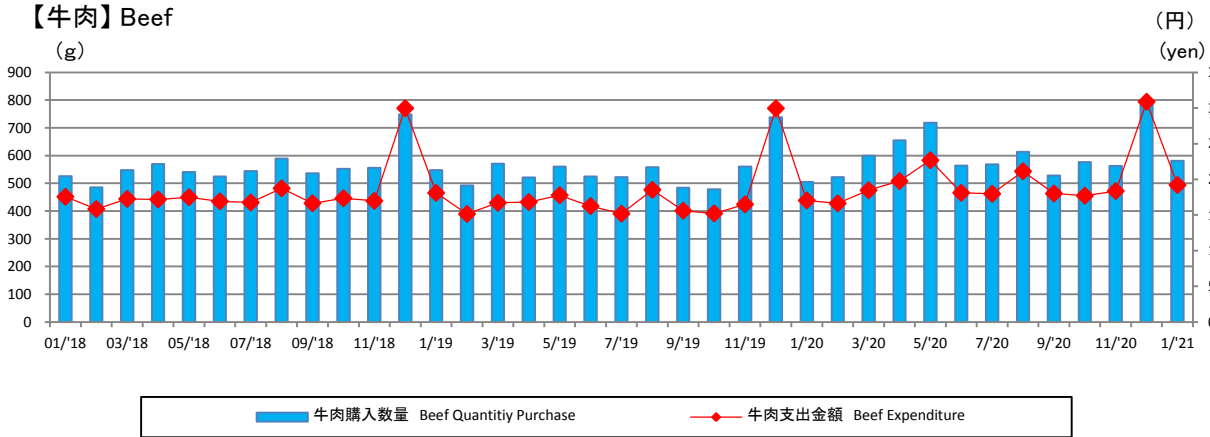
◆ 2019年3月期 FY 2019/3
● 2020年3月期 FY 2020/3
■ 2021年3月期 FY 2021/3

前期差 Comparison with the previous year	前月差 Comparison with The previous month
-24	-8

(¥/kg)

グラフ資料出所：農畜産業振興機構(全て単純平均単価)
Source: Agriculture & Livestock Industries Corporation (all graphs based on average prices)

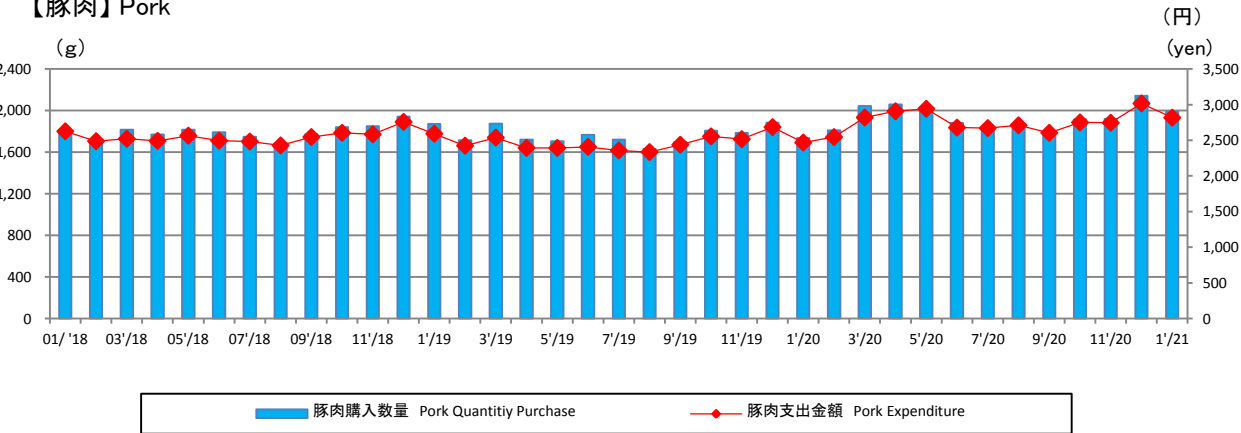
【牛肉】 Beef



グラフ資料出所: 総務省「家計調査」
Source: Ministry of Internal Affairs and Communications "Family Income and Expenditure Survey"
二人以上の世帯(農林漁家世帯を除く)
Two-or-more-person Households (Not including agricultural, forestry and fisheries households)

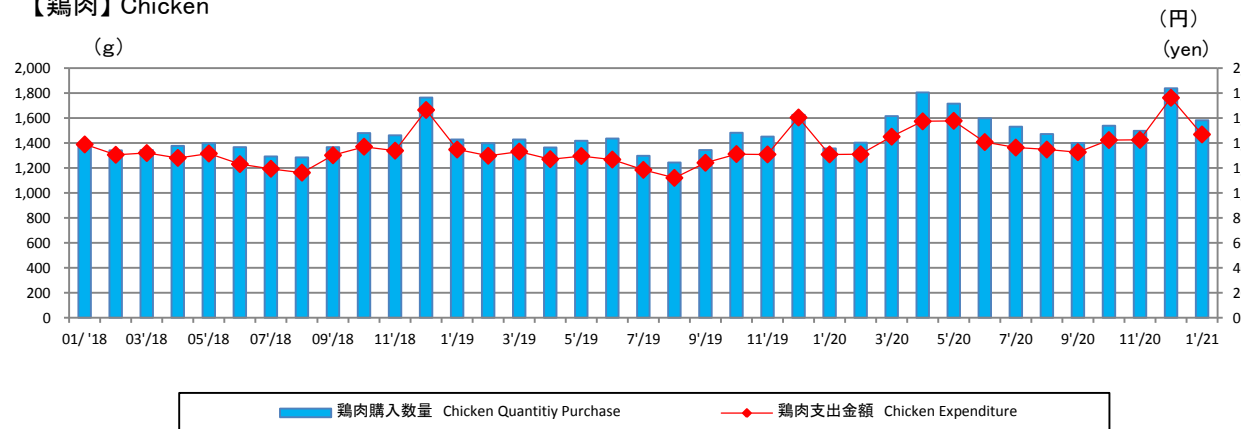
	前期差 Comparison with The previous year	前月差 Comparison with The previous month
購入数量(g) Quantity Purchase(g)	76	-203
支出金額(円) Expenditure (yen)	216	-1,168

【豚肉】 Pork



	前期差 Comparison with The previous year	前月差 Comparison with The previous month
購入数量(g) Quantity Purchase(g)	252	-154
支出金額(円) Expenditure (yen)	348	-200

【鶏肉】 Chicken

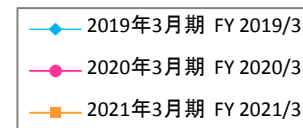
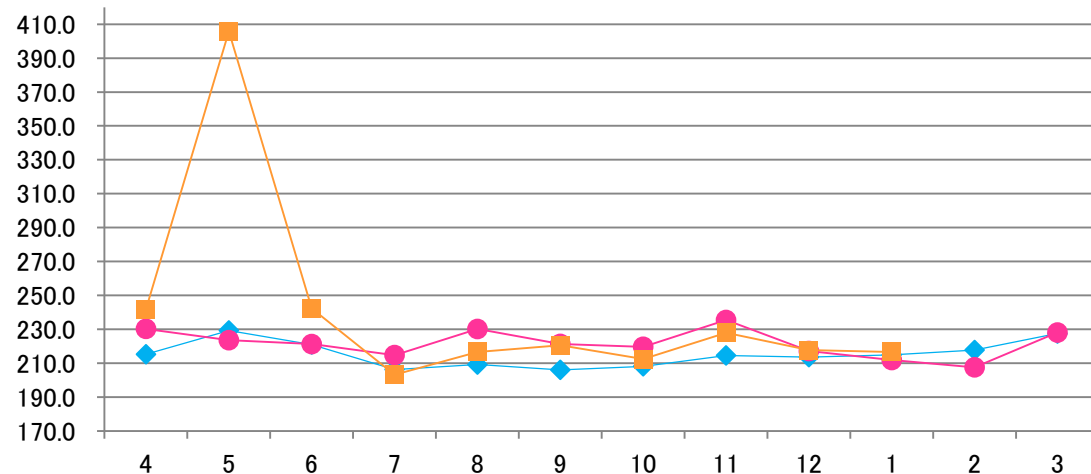


	前期差 Comparison with The previous year	前月差 Comparison with The previous month
購入数量(g) Quantity Purchase(g)	224	-257
支出金額(円) Expenditure (yen)	160	-294

【米国産 牛肉カットアウトバリュー 枝肉ベース】

U.S. Beef Boxed cutout, Choice 1-3, 600-900 lbs

(ドル/100ポンド)
(US \$/cwt)



(ドル/100ポンド)
(US \$/cwt)

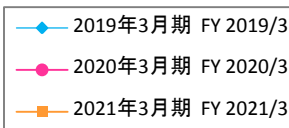
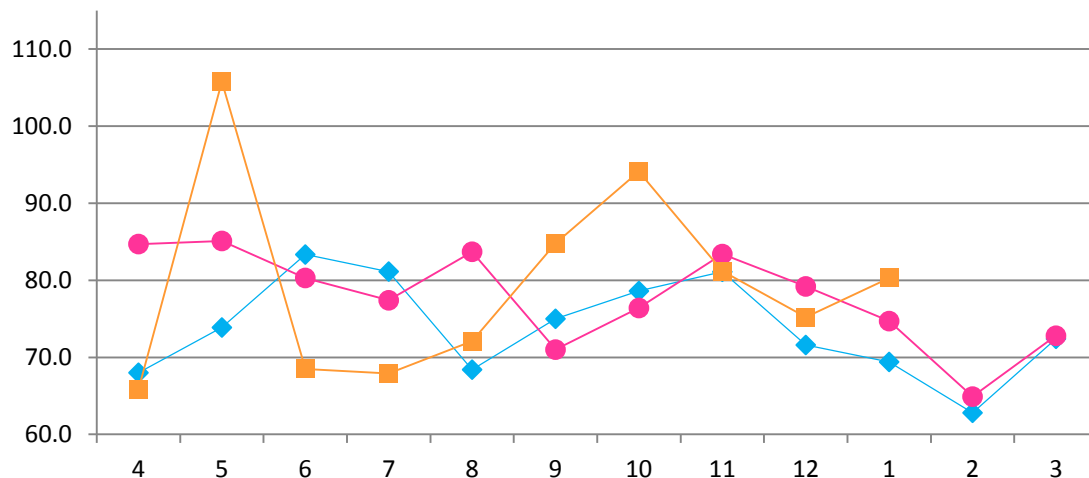
前期差 Comparison with the previous year	前月差 Comparison with The previous month
4.8	-1.1

グラフ資料出所: 米国食肉輸出連合会
Source: U.S. Meat Export Federation

【米国産 豚肉カットアウトバリュー 枝肉ベース】

U.S. Pork Cutout composite carcass, 53-54% lean

(ドル/100ポンド)
(US \$/cwt)



(ドル/100ポンド)
(US \$/cwt)

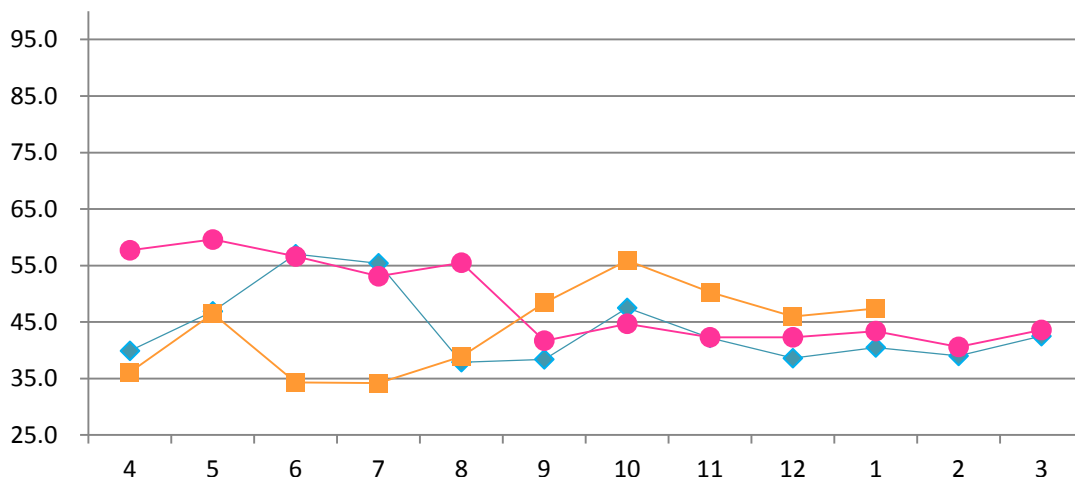
前期差 Comparison with the previous year	前月差 Comparison with The previous month
5.6	5.1

グラフ資料出所: 米国食肉輸出連合会
Source: U.S. Meat Export Federation

【米国産 肥育豚価格(生産者販売価格)】

Live U.S. Fattening Pig Prices (Pig Sales Price)

(セント/ポンド)
(US ¢/lb)



◆ 2019年3月期 FY 2019/3
● 2020年3月期 FY 2020/3
■ 2021年3月期 FY 2021/3

(セント/ポンド)
(US ¢/lb)

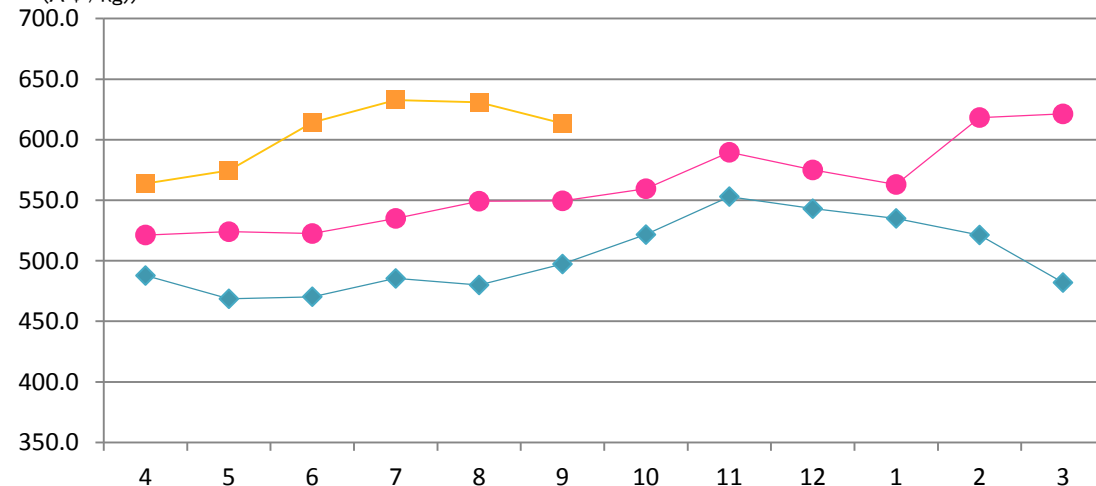
前期差 Comparison with the previous year	前月差 Comparison with The previous month
4	1.4

グラフ資料出所: 農畜産業振興機構 (全て単純平均単価)
Source: Agriculture & Livestock Industries Corporation (all graphs based on average prices)

【豪州産 肥育牛価格(生産者販売価格)】

Live Australian Fattening Cattle Prices (Cattle Sales Price)

(豪セント/kg)
(A ¢/kg)



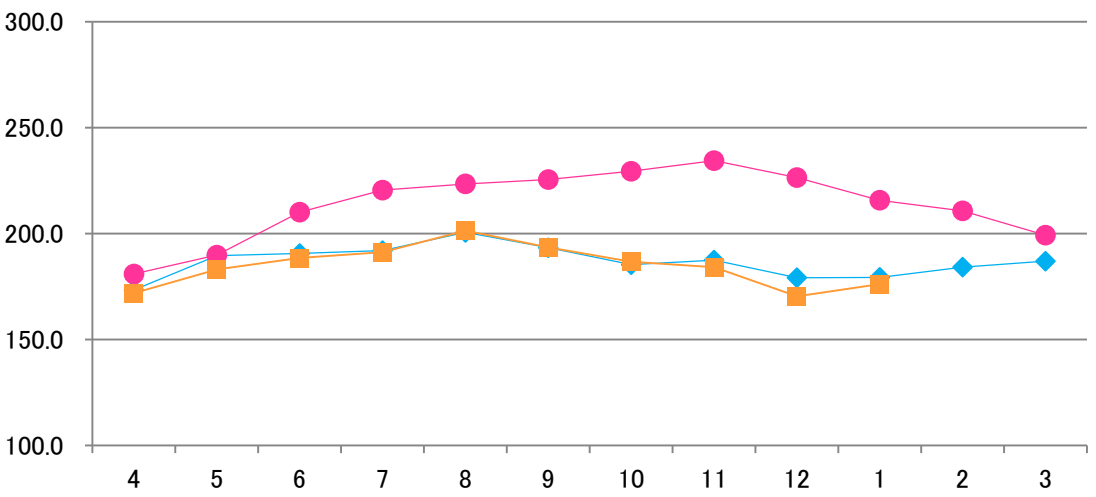
◆ 2019年3月期 FY 2019/3
● 2020年3月期 FY 2020/3
■ 2021年3月期 FY 2021/3

(豪セント/kg)
(A ¢/kg)

前期差 Comparison with the previous year	前月差 Comparison with The previous month
64.0	-17.3

グラフ資料出所: 農畜産業振興機構 (全て単純平均単価)
Source: Agriculture & Livestock Industries Corporation (all graphs based on average prices)

【ウルグアイ 牛価格 生体ベース】
 Uruguay cattle prices, >380kg
 (ドル/100kg)
 (US \$/lwt)



◆ 2019年3月期 FY 2019/3
 ● 2020年3月期 FY 2020/3
 ■ 2021年3月期 FY 2021/3

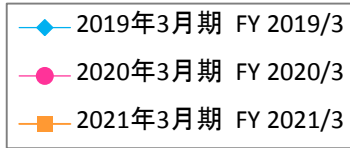
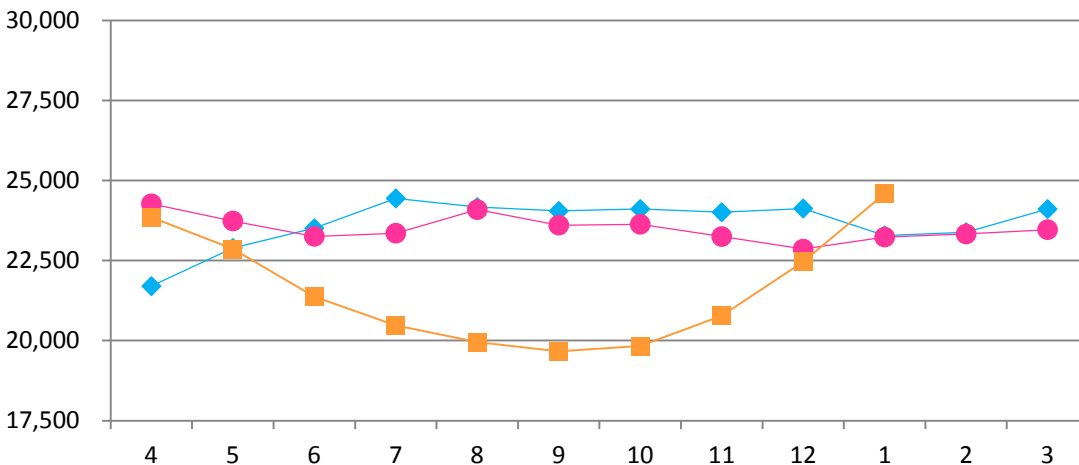
(ドル/100kg) (US \$/lwt)	
前期差 Comparison with the previous year	前月差 Comparison with The previous month
-39.6	5.8

グラフ資料出所: 豪州食肉家畜生産者事業団
 Source: Meat & Livestock Australia Ltd

【とうもろこしの輸入価格】

Imported Corn Prices

(円/トン)
(¥/t)



(円/トン)
(¥/t)

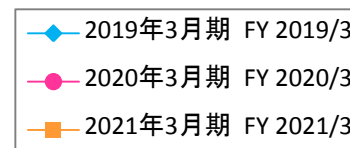
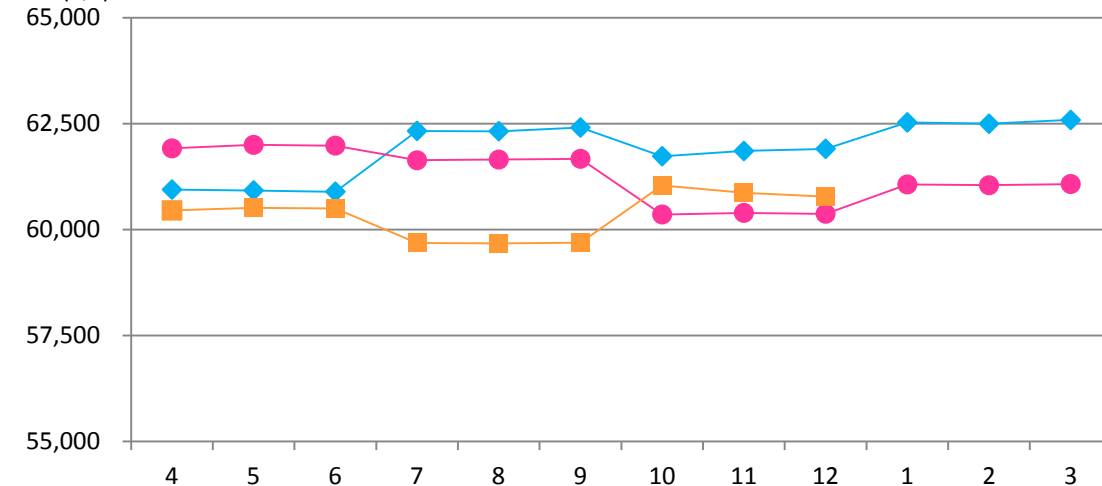
前期差 Comparison with the previous year	前月差 Comparison with The previous month
1,361	2,129

グラフ資料出所: 農畜産業振興機構 (全て単純平均単価)
Source: Agriculture & Livestock Industries Corporation (all graphs based on average prices)

【配合飼料の価格】

Mixed Feed Prices

(円/トン)
(¥/t)



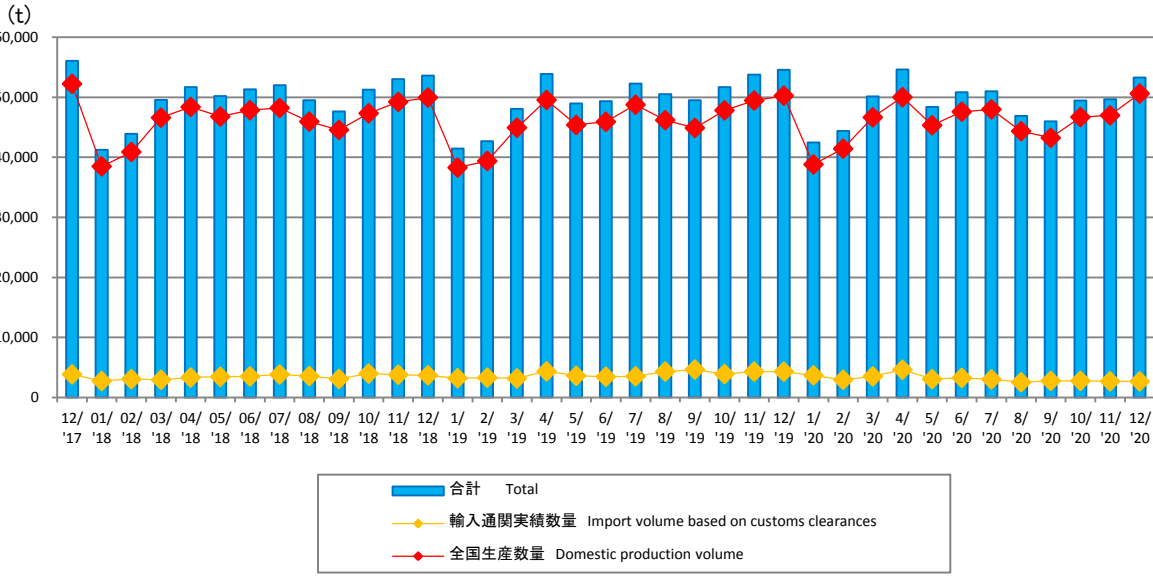
(円/トン)
(¥/t)

前期差 Comparison with the previous year	前月差 Comparison with The previous month
407	-88

グラフ資料出所: 農畜産業振興機構 (全て単純平均単価)
Source: Agriculture & Livestock Industries Corporation (all graphs based on average prices)

【ハム・ソーセージ全国生産数量・輸入通関実績数量】

Production and Import Volume Based on Customs Clearances for Hams and Sausages

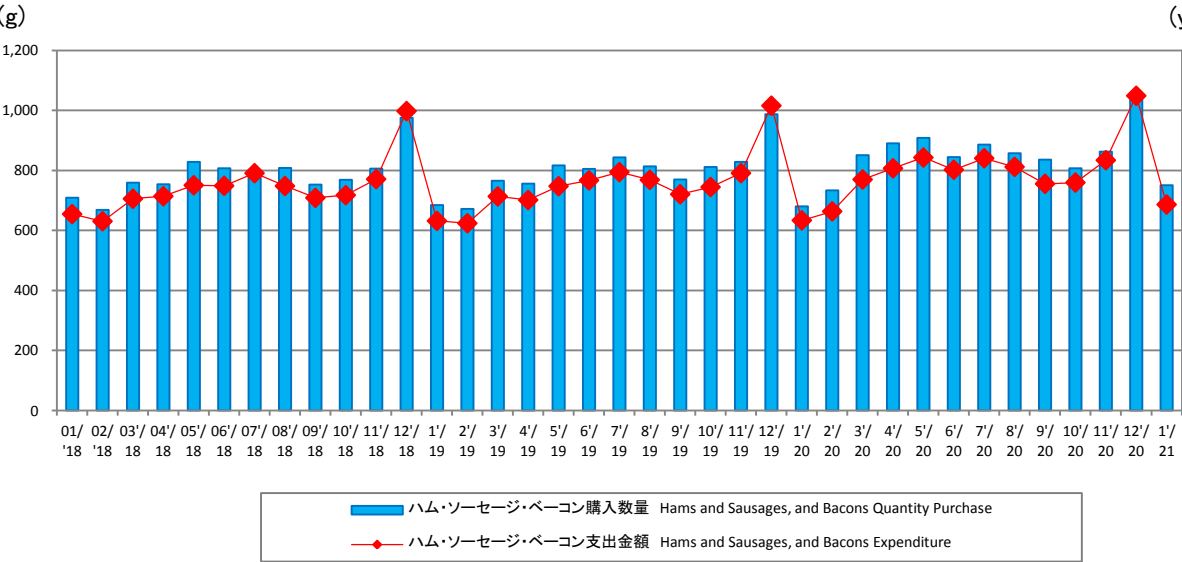


グラフ資料出所: 日本食肉加工協会
Source: Japan Meat Processor Association

	前期比 Comparison with The previous year	前月比 Comparison with The previous month
輸入量 Imports	-37.9	-0.6
生産数量 Production	0.7	7.7
合計 Total	-2.3	7.3

【家計調査 ハム・ソーセージ・ベーコン購入数量 / 支出金額】

Family Income and Expenditure Survey for Hams and Sausages, and Bacons



グラフ資料出所: 総務省「家計調査」
Source: Ministry of Internal Affairs and Communications "Family Income and Expenditure Survey"
二人以上の世帯(農林漁家世帯を除く)
Two-or-more-person Households (Not including agricultural, forestry and fisheries households)

	前期差 Comparison with The previous year	前月差 Comparison with The previous month
購入数量(g) Quantity Purchase(g)	71	-286
支出金額(円) Expenditure (yen)	88	-604

○牛肉相場/Beef Prices (P2)

去勢和牛 A-3 (東京市場、税込、円/KG)/Tokyo Market A-3 Wagyu Steer Prices, Tax Included

出所:東京食肉市場株式会社/Data Source:Tokyo Meat Market Co.Ltd (yen/kg)

	Apr	May	Jun	Jul	Aug	Sep	Oct	Nov	Dec	Jan	Feb	Mar	Average
FY2019/3	2,157	2,147	2,145	2,166	2,208	2,273	2,301	2,461	2,526	2,326	2,306	2,278	2,275
FY2020/3	2,262	2,220	2,235	2,220	2,175	2,196	2,181	2,175	2,011	2,053	1,907	1,666	2,108
FY2021/3	1,518	1,618	1,671	1,844	1,849	1,915	2,157	2,322	2,387	2,294	2,228		1,982

豪州チルドビーフ ショートグレインフルセット(円/KG)/Australian Chilled Beef [Full Set (Short Grain Fed)] Prices

出所:農畜産業振興機構(全て単純平均単価)/Data Source:Agriculture & Livestock Industries Corporation (all graphs based on average price) (yen/kg)

	Apr	May	Jun	Jul	Aug	Sep	Oct	Nov	Dec	Jan	Feb	Mar	Average
FY2019/3	1,151	1,152	1,152	1,152	1,176	1,176	1,183	1,196	1,211	1,217	1,221	1,221	1,184
FY2020/3	1,186	1,187	1,201	1,222	1,221	1,178	1,222	1,222	1,222	1,221	1,220	1,219	1,210
FY2021/3	1,221	1,221	1,221	1,221	1,201	1,251	1,264	1,277	1,277	1,276	1,276		1,246

○豚肉相場/Pork Prices

豚肉枝肉卸売価格 上物 東京市場平均価格、税込(円/KG)/Pork Carcass Prices (Tokyo Market Excellent grade, monthly average, Tax Included)

出所:東京食肉市場株式会社/Data Source:Tokyo Meat Market Co.Ltd (yen/kg)

	Apr	May	Jun	Jul	Aug	Sep	Oct	Nov	Dec	Jan	Feb	Mar	Average
FY2019/3	473	620	588	651	616	513	461	439	445	448	489	477	518
FY2020/3	538	606	589	562	561	553	501	455	509	452	434	482	520
FY2021/3	611	630	624	641	634	621	536	530	536	496	499		578

US冷凍ウデ(ピクニック) (円/KG)/U.S. Frozen Pork (Picnic) Prices

※ピクニックとは部位の名前です。

出所:農畜産業振興機構(全て単純平均単価)/Data Source:Agriculture & Livestock Industries Corporation (all graphs based on average price) (yen/kg)

	Apr	May	Jun	Jul	Aug	Sep	Oct	Nov	Dec	Jan	Feb	Mar	Average
FY2019/3	545	530	549	536	526	495	490	483	474	467	471	476	504
FY2020/3	515	507	503	491	493	488	486	488	504	506	502	488	498
FY2021/3	477	490	492	482	485	483	479	478	476	455	455		477

○鶏肉相場/Chicken Prices (P6)

鶏肉卸売価格(モモ肉、税抜、円/KG)/Domestic Chicken Thigh Meat Wholesale Prices 出所:食品産業新聞社畜産日報掲載分から単純平均単価

Data Source: "DAILY MEAT & LIVESTOCK" which is a trade business paper published in Japan (all graphs based on average price) (yen/kg)

	Apr	May	Jun	Jul	Aug	Sep	Oct	Nov	Dec	Jan	Feb	Mar	Average
FY2019/3	618	590	573	565	545	563	573	580	633	658	650	647	600
FY2020/3	617	603	568	548	525	525	525	545	594	616	598	580	570
FY2021/3	578	608	609	592	588	602	634	655	685	710	700		633

鶏肉卸売価格(ムネ肉、税抜、円/KG)/Domestic Chicken Breast Meat Wholesale Prices 出所:食品産業新聞社畜産日報掲載分から単純平均単価

Data Source: "DAILY MEAT & LIVESTOCK" which is a trade business paper published in Japan (all graphs based on average price) (yen/kg)

	Apr	May	Jun	Jul	Aug	Sep	Oct	Nov	Dec	Jan	Feb	Mar	Average
FY2019/3	303	290	280	278	270	275	280	280	280	273	240	227	273
FY2020/3	217	235	240	233	227	230	250	250	259	254	246	240	240
FY2021/3	237	253	260	267	273	283	293	303	310	310	303		281

ブラジル もも肉価格(円/KG)/Brazilian Chicken Thigh Prices

出所:食品産業新聞社畜産日報掲載分から単純平均単価

Data Source: "DAILY MEAT & LIVESTOCK" which is a trade business paper published in Japan (all graphs based on average price) (yen/kg)

	Apr	May	Jun	Jul	Aug	Sep	Oct	Nov	Dec	Jan	Feb	Mar	Average
FY2019/3	270	280	353	411	353	303	285	292	328	340	340	338	324
FY2020/3	355	360	365	360	312	305	288	300	300	296	288	274	317
FY2021/3	260	260	250	237	235	232	235	240	240	240	220		241

○海外食肉相場/Market Trend in Overseas Cutout Value Prices(P10)

米国産 牛肉カットアウトバリュー 枝肉ベース (ドル/100ポンド)/U.S. Beef Boxed cutout, Choice 1-3, 600-900 lbs

出所: 米国食肉輸出連合会/Source: U.S. Meat Export Federation

(US\$/cwt)

	Apr	May	Jun	Jul	Aug	Sep	Oct	Nov	Dec	Jan	Feb	Mar	Average
FY2019/3	215.3	229.3	221.0	206.3	209.2	206.1	208.2	214.6	213.6	215.0	217.8	227.5	215.3
FY2020/3	230.3	223.6	221.3	214.8	230.2	221.4	219.7	235.5	217.2	211.9	207.6	228.1	221.8
FY2021/3	241.9	405.8	242.3	203.2	216.7	220.6	212.4	228.0	217.8	216.7			200.5

米国産 豚肉カットアウトバリュー 枝肉ベース (ドル/100ポンド)/U.S. Pork Cutout composite carcass, 53-54% lean

出所: 米国食肉輸出連合会/Source: U.S. Meat Export Federation

(US\$/cwt)

	Apr	May	Jun	Jul	Aug	Sep	Oct	Nov	Dec	Jan	Feb	Mar	Average
FY2019/3	68.0	73.9	83.3	81.1	68.4	75.0	78.6	81.1	71.6	69.4	62.8	72.4	73.8
FY2020/3	84.7	85.1	80.3	77.4	83.7	71.0	76.4	83.4	79.2	74.7	64.9	72.8	77.8
FY2021/3	65.8	105.8	68.5	67.9	72.1	84.8	94.1	81.2	75.2	80.3			66.3

○海外生体相場/Market Trend in Overseas Livestock Prices(P11~12)

米国 肥育豚価格 (生産者販売価格、セント/ポンド)/Live U.S. Fattening Pig Prices (Pig sales price)

出所: 農畜産業振興機構(全て単純平均単価)/Source: Agriculture & Livestock Industries Corporation (all graphs based on average price (US\$/lb)

	Apr	May	Jun	Jul	Aug	Sep	Oct	Nov	Dec	Jan	Feb	Mar	Average
FY2019/3	39.9	46.9	57.0	55.4	37.9	38.4	47.5	42.2	38.6	40.5	39.0	42.5	43.8
FY2020/3	57.7	59.6	56.6	53.1	55.5	41.7	44.7	42.3	42.3	43.4	40.6	43.6	48.4
FY2021/3	36.1	46.5	34.3	34.2	38.9	48.4	55.9	50.3	46.0	47.4			36.5

豪州 肥育牛価格 (生産者販売価格、豪セント/KG)/Live Australian Fattening Cattle Prices (Cattle sales price)

出所: 農畜産業振興機構(全て単純平均単価)/Source: Agriculture & Livestock Industries Corporation (all graphs based on average price (A\$/kg)

	Apr	May	Jun	Jul	Aug	Sep	Oct	Nov	Dec	Jan	Feb	Mar	Average
FY2019/3	487.8	468.6	470.3	485.4	480.0	497.3	521.6	553.0	543.0	535.0	521.3	482.0	503.8
FY2020/3	521.3	524.0	522.5	535.0	549.2	549.5	559.5	589.6	575.0	563.0	618.3	621.3	560.7
FY2021/3	563.8	574.6	614.3	632.8	630.8	613.5							302.5

ウルグアイ 牛生体価格 生体ベース (ドル/100kg)/Uruguay Cattle Prices, >380kg

出所: 豪州食肉家畜生産者事業団/Source: Meat & Livestock Australia Ltd

(US\$/lwt)

	Apr	May	Jun	Jul	Aug	Sep	Oct	Nov	Dec	Jan	Feb	Mar	Average
FY2019/3	173.5	189.6	190.6	192.0	200.6	193.4	185.4	187.6	179.2	179.4	184.2	187.0	186.9
FY2020/3	181.0	189.9	210.2	220.6	223.5	225.6	229.5	234.5	226.5	215.8	210.8	199.3	213.9
FY2021/3	171.9	183.2	188.5	191.3	201.4	193.6	186.7	184.2	170.4	176.2			184.7

○飼料価格相場/Market Trends in Grain Feed Prices(P13~14)

とうもろこしの輸入価格(円/トン)/Imported Corn Prices

出所: 農畜産業振興機構(全て単純平均単価)/Source: Agriculture & Livestock Industries Corporation (all graphs based on average price) (yen/t)

	Apr	May	Jun	Jul	Aug	Sep	Oct	Nov	Dec	Jan	Feb	Mar	Average
FY2019/3	21,701	22,893	23,508	24,440	24,168	24,049	24,110	24,010	24,127	23,287	23,386	24,109	23,649
FY2020/3	24,274	23,736	23,256	23,355	24,091	23,607	23,633	23,250	22,860	23,234	23,329	23,466	23,508
FY2021/3	23,853	22,861	21,375	20,473	19,955	19,665	19,830	20,774	22,466	24,595			21,585

配合飼料の価格動向(円/トン)/Mixed Feed Prices

出所: 農畜産業振興機構(全て単純平均単価)/Source: Agriculture & Livestock Industries Corporation (all graphs based on average price) (yen/t)

	Apr	May	Jun	Jul	Aug	Sep	Oct	Nov	Dec	Jan	Feb	Mar	Average
FY2019/3	60,944	60,924	60,894	62,328	62,321	62,408	61,732	61,854	61,906	62,529	62,497	62,586	61,910
FY2020/3	61,917	61,999	61,981	61,635	61,652	61,670	60,356	60,394	60,373	61,065	61,046	61,075	61,264
FY2021/3	60,455	60,515	60,497	59,686	59,676	59,691	61,042	60,868	60,780				60,357

○牛肉需給動向/Beef(P3)

出所: 農畜産業振興機構

Notes:1.Boneless cuts equivalent

Source: Agriculture & Livestock Industries Corporation

2.Figures for stocks are estimated by ALIC

(t)

FY 2019/3	Apr	May	Jun	Jul	Aug	Sep	Oct	Nov	Dec	Jan	Feb	Mar	Total
供給量/Supplied Quantity	90,885	80,543	73,646	95,559	83,510	77,708	80,200	86,010	78,441	75,433	64,981	65,626	952,542
うち生産量/Production	28,775	26,407	26,327	30,058	25,781	25,454	28,779	34,325	30,829	24,868	24,875	26,378	332,856
うち輸入量/Imports	62,110	54,136	47,319	65,501	57,729	52,254	51,421	51,685	47,612	50,565	40,106	39,248	619,686
推定出回り量/Estimated Marketing Quantity	89,694	74,517	71,011	86,244	75,608	77,971	79,347	83,107	83,977	72,814	64,721	71,357	930,368
うち国産品/Domestic	28,976	26,421	26,014	29,789	25,493	24,258	28,570	33,022	31,015	25,232	24,678	26,350	329,818
うち輸入品/Imported	60,718	48,096	44,997	56,455	50,115	53,713	50,777	50,085	52,962	47,582	40,043	45,007	600,550
推定期末在庫/Estimated Ending Stock	98,488	104,243	106,611	115,645	123,281	122,731	123,268	125,754	119,768	122,130	122,055	115,940	-
うち国産品/Domestic	9,026	8,741	8,787	8,775	8,797	9,706	9,599	10,485	9,849	9,228	9,090	8,734	-
うち輸入品/Imported	89,462	95,502	97,824	106,870	114,484	113,025	113,669	115,269	109,919	112,902	112,965	107,206	-

(t)

FY 2020/3	Apr	May	Jun	Jul	Aug	Sep	Oct	Nov	Dec	Jan	Feb	Mar	Total
供給量/Supplied Quantity	96,568	74,282	72,592	93,037	78,159	76,678	83,612	80,646	83,470	73,213	66,584	73,149	951,990
うち生産量/Production	29,292	25,719	25,308	30,506	24,602	26,144	28,234	33,361	30,355	25,803	24,758	25,572	329,654
うち輸入量/Imports	67,276	48,563	47,284	62,531	53,557	50,534	55,378	47,285	53,115	47,410	41,826	47,577	622,336
推定出回り量/Estimated Marketing Quantity	94,950	71,450	67,882	84,957	78,880	76,157	81,831	88,627	88,108	66,511	69,669	67,927	936,949
うち国産品/Domestic	28,264	26,094	24,244	30,997	23,942	25,768	26,022	33,275	27,789	27,716	24,553	24,871	323,535
うち輸入品/Imported	66,686	45,356	43,638	53,960	54,938	50,389	55,809	55,352	60,319	38,795	45,116	43,056	613,414
推定期末在庫/Estimated Ending Stock	117,194	119,759	124,128	131,898	130,761	130,894	132,306	123,915	118,780	125,264	121,874	126,843	-
うち国産品/Domestic	9,398	8,756	9,479	8,678	8,922	8,910	10,753	10,429	12,498	10,367	10,267	10,715	-
うち輸入品/Imported	107,796	111,003	114,649	123,220	121,839	121,984	121,553	113,486	106,282	114,897	111,607	116,128	-

(t)

FY 2021/3	Apr	May	Jun	Jul	Aug	Sep	Oct	Nov	Dec	Jan	Feb	Mar	Total
供給量/Supplied Quantity	96,131	75,284	78,534	83,300	72,895	71,368	80,386	83,159	80,534	68,883			790,474
うち生産量/Production	27,096	25,244	27,825	30,660	25,688	27,110	29,433	33,750	31,285	24,878			282,969
うち輸入量/Imports	69,035	50,040	50,709	52,640	47,207	44,258	50,953	49,409	49,249	44,005			507,505
推定出回り量/Estimated Marketing Quantity	80,730	69,267	78,404	86,251	74,014	77,368	82,645	88,136	83,050	66,677			786,542
うち国産品/Domestic	26,062	24,966	28,339	30,503	25,328	26,082	28,754	32,729	29,877	24,572			277,212
うち輸入品/Imported	54,668	44,301	50,065	55,748	48,686	51,286	53,891	55,407	53,173	42,105			509,330
推定期末在庫/Estimated Ending Stock	141,987	147,770	147,453	144,076	142,505	136,001	133,096	127,612	124,502	126,325			-
うち国産品/Domestic	11,492	11,536	10,575	10,306	10,214	10,738	10,771	11,285	12,099	12,022			-
うち輸入品/Imported	130,495	136,234	136,878	133,770	132,291	125,263	122,325	116,327	112,403	114,303			-

○豚肉需給動向/Pork (P5)

出所: 農畜産業振興機構

Notes: 1. Boneless cuts equivalent

Source: Agriculture & Livestock Industries Corporation

2. Figures for stocks are estimated by ALIC (t)

FY 2019/3	Apr	May	Jun	Jul	Aug	Sep	Oct	Nov	Dec	Jan	Feb	Mar	Total
供給量/Supplied Quantity	155,640	156,379	146,250	146,793	149,789	136,647	166,031	165,599	152,484	141,180	154,228	142,661	1,813,681
うち生産量/Production	75,496	76,152	69,573	68,709	70,135	67,675	82,052	82,253	79,338	79,477	72,590	74,058	897,508
うち輸入量/Imports	80,144	80,227	76,677	78,084	79,654	68,972	83,979	83,346	73,146	61,703	81,638	68,603	916,173
推定出回り量/Estimated Marketing Quantity	158,559	154,017	147,959	149,228	149,734	145,081	167,624	168,017	155,468	137,627	151,121	143,020	1,827,455
うち国産品/Domestic	77,128	75,842	71,104	68,762	69,223	67,772	81,863	81,924	78,307	79,203	72,334	72,588	896,050
うち輸入品/Imported	81,431	78,175	76,855	80,466	80,511	77,309	85,761	86,093	77,161	58,424	78,787	70,432	931,405
推定期末在庫/Estimated Ending Stock	177,966	180,286	178,521	176,037	176,030	167,559	165,907	163,417	160,361	163,889	166,915	166,489	-
うち国産品/Domestic	18,753	19,021	17,434	17,332	18,182	18,048	18,178	18,435	19,394	19,643	19,818	21,221	-
うち輸入品/Imported	159,213	161,265	161,087	158,705	157,848	149,511	147,729	144,982	140,967	144,246	147,097	145,268	-

FY 2020/3	Apr	May	Jun	Jul	Aug	Sep	Oct	Nov	Dec	Jan	Feb	Mar	Total
供給量/Supplied Quantity	176,023	159,650	143,295	160,214	152,727	146,955	163,052	160,249	153,148	153,144	140,412	147,163	1,856,032
うち生産量/Production	77,788	75,254	67,049	74,899	67,745	68,830	79,112	77,534	80,884	80,864	73,425	79,535	902,919
うち輸入量/Imports	98,235	84,396	76,246	85,315	84,982	78,125	83,940	82,715	72,264	72,280	66,987	67,628	953,113
推定出回り量/Estimated Marketing Quantity	152,687	142,740	142,547	153,084	146,276	149,435	162,201	166,197	163,753	146,161	141,397	145,073	1,811,551
うち国産品/Domestic	76,406	76,085	65,290	76,348	68,891	69,036	79,247	75,817	81,783	80,150	71,714	77,478	898,245
うち輸入品/Imported	76,281	66,655	77,257	76,736	77,385	80,399	82,954	90,380	81,970	66,011	69,683	67,595	913,306
推定期末在庫/Estimated Ending Stock	189,766	206,606	207,284	214,359	220,743	218,205	218,968	212,979	202,275	209,212	208,119	210,137	-
うち国産品/Domestic	22,544	21,643	23,332	21,828	20,615	20,351	20,128	21,804	20,806	21,474	23,077	25,062	-
うち輸入品/Imported	167,222	184,963	183,952	192,531	200,128	197,854	198,840	191,175	181,469	187,738	185,042	185,075	-

FY 2021/3	Apr	May	Jun	Jul	Aug	Sep	Oct	Nov	Dec	Jan	Feb	Mar	Total
供給量/Supplied Quantity	181,807	151,182	152,057	148,978	136,610	137,202	152,571	149,903	154,029	145,420			1,509,759
うち生産量/Production	80,239	71,318	72,535	73,967	68,179	71,786	80,156	79,406	82,555	78,800			758,941
うち輸入量/Imports	101,568	79,864	79,522	75,011	68,431	65,416	72,415	70,497	71,474	66,620			750,818
推定出回り量/Estimated Marketing Quantity	167,907	139,324	152,572	158,510	141,115	144,946	161,334	158,952	160,519	151,043			1,536,222
うち国産品/Domestic	82,085	73,523	70,031	75,708	69,117	72,409	80,388	79,178	81,364	76,657			760,460
うち輸入品/Imported	85,822	65,801	82,541	82,802	71,998	72,537	80,946	79,774	79,155	74,386			775,762
推定期末在庫/Estimated Ending Stock	223,945	235,742	235,073	225,452	220,847	213,071	204,188	194,989	188,311	182,564			-
うち国産品/Domestic	23,124	20,858	23,208	21,378	20,340	19,685	19,333	19,411	20,414	22,433			-
うち輸入品/Imported	200,821	214,884	211,865	204,074	200,507	193,386	184,855	175,578	167,897	160,131			-

○鶏肉需給動向(P7)

出所:農畜産業振興機構

Notes:1.Bone in cuts equivalent

注:数量は骨付き肉ベース。成鶏肉を含む。輸入量には鶏肉以外の家禽肉を含まない。

2.Figures for stocks are estimated by ALIC

Source: Agriculture & Livestock Industries Corporation

3.The production quantity and the estimate (t)

FY 2019/3	Apr	May	Jun	Jul	Aug	Sep	Oct	Nov	Dec	Jan	Feb	Mar	Total
供給量/Supplied Quantity	182,247	183,714	177,979	173,722	175,962	164,315	195,306	180,559	194,241	172,027	170,244	174,431	2,144,746
うち生産量/Production	132,678	136,573	134,085	128,051	125,158	124,069	140,895	137,380	147,236	130,051	128,790	134,857	1,599,823
うち輸入量/Imports	49,569	47,141	43,894	45,671	50,804	40,246	54,411	43,179	47,005	41,976	41,454	39,574	544,923
推定出回り量/Estimated Marketing Quantity	188,085	181,386	184,986	171,807	174,951	170,473	191,343	181,151	201,032	169,277	173,494	180,985	2,168,969
うち国産品/Domestic	135,183	131,793	135,519	128,867	124,716	125,158	139,768	137,903	149,589	128,657	127,400	136,047	1,600,600
うち輸入品/Imported	52,902	49,593	49,467	42,940	50,235	45,315	51,575	43,248	51,443	40,620	46,094	44,938	568,369
推定期末在庫/Estimated Ending Stock	170,714	173,042	166,035	167,950	168,961	162,803	166,766	166,174	159,383	162,133	158,883	152,329	-
うち国産品/Domestic	25,924	30,704	29,270	28,454	28,896	27,807	28,934	28,411	26,058	27,452	28,842	27,652	-
うち輸入品/Imported	144,790	142,338	136,765	139,496	140,065	134,996	137,832	137,763	133,325	134,681	130,041	124,677	-

FY 2020/3	Apr	May	Jun	Jul	Aug	Sep	Oct	Nov	Dec	Jan	Feb	Mar	Total
供給量/Supplied Quantity	184,452	184,545	177,407	188,797	179,770	181,521	194,242	190,903	196,395	179,031	180,619	184,824	2,222,507
うち生産量/Production	137,186	137,972	134,042	135,585	129,253	127,912	142,651	142,075	151,473	137,411	136,700	138,129	1,650,389
うち輸入量/Imports	47,266	46,573	43,365	53,212	50,517	53,609	51,591	48,828	44,922	41,620	43,919	46,695	572,118
推定出回り量/Estimated Marketing Quantity	183,618	184,930	176,590	185,782	179,421	174,134	191,414	191,885	200,780	174,731	179,016	182,087	2,204,389
うち国産品/Domestic	134,093	138,030	134,152	137,117	129,562	126,770	143,230	142,799	151,874	136,264	136,241	136,788	1,646,920
うち輸入品/Imported	49,525	46,900	42,438	48,665	49,859	47,364	48,184	49,086	48,906	38,467	42,775	45,299	557,469
推定期末在庫/Estimated Ending Stock	153,163	152,778	153,595	156,610	156,959	164,346	167,174	166,192	161,807	166,107	167,710	170,447	-
うち国産品/Domestic	30,745	30,687	30,577	29,045	28,736	29,878	29,299	28,575	28,174	29,321	29,780	31,121	-
うち輸入品/Imported	122,418	122,091	123,018	127,565	128,223	134,468	137,875	137,617	133,633	136,786	137,930	139,326	-

FY 2021/3	Apr	May	Jun	Jul	Aug	Sep	Oct	Nov	Dec	Jan	Feb	Mar	Total
供給量/Supplied Quantity	188,018	172,357	189,190	189,917	168,373	173,495	194,809	185,789	196,273	182,390			1,840,612
うち生産量/Production	141,312	136,238	138,537	138,339	128,060	132,019	146,914	140,480	153,562	133,460			1,388,921
うち輸入量/Imports	46,706	36,119	50,653	51,578	40,313	41,476	47,895	45,309	42,711	48,930			451,691
推定出回り量/Estimated Marketing Quantity	186,763	174,691	187,772	190,554	171,390	174,413	200,076	189,036	202,882	177,450			1,855,028
うち国産品/Domestic	145,231	142,335	141,090	127,369	129,603	132,222	147,884	140,860	153,149	133,787			1,393,530
うち輸入品/Imported	41,532	32,356	46,682	63,185	41,787	42,191	52,192	48,176	49,733	43,663			461,498
推定期末在庫/Estimated Ending Stock	171,702	169,368	170,786	170,149	167,132	166,214	160,947	157,700	151,091	156,031			-
うち国産品/Domestic	27,202	21,105	18,552	29,522	27,979	27,776	26,806	26,426	26,839	26,512			-
うち輸入品/Imported	144,500	148,263	152,234	140,627	139,153	138,438	134,141	131,274	124,252	129,519			-

○ハムソーセージ需給動向/Hams and Sausages (P15)

FY 2019/3

(t)

	Apr	May	Jun	Jul	Aug	Sep	Oct	Nov	Dec	Jan	Feb	Mar	Total
国内生産量/Production	48,395	46,796	47,852	48,230	45,960	44,571	47,332	49,239	49,962	38,293	39,391	44,937	550,958
輸入量/Imports	3,312	3,433	3,491	3,814	3,547	3,070	3,966	3,773	3,679	3,195	3,286	3,154	41,721
合計/Supplied Quantity	51,707	50,229	51,343	52,044	49,507	47,641	51,298	53,012	53,641	41,488	42,677	48,091	592,679

FY 2020/3

(t)

	Apr	May	Jun	Jul	Aug	Sep	Oct	Nov	Dec	Jan	Feb	Mar	Total
国内生産量/Production	49,558	45,393	45,920	48,773	46,197	44,899	47,831	49,466	50,268	38,811	41,439	46,669	555,224
輸入量/Imports	4,333	3,590	3,443	3,505	4,308	4,641	3,889	4,297	4,287	3,681	2,936	3,491	46,401
合計/Supplied Quantity	53,891	48,983	49,363	52,278	50,505	49,540	51,720	53,763	54,555	42,492	44,375	50,160	601,625

FY 2021/3

(t)

	Apr	May	Jun	Jul	Aug	Sep	Oct	Nov	Dec	Jan	Feb	Mar	Total
国内生産量/Production	50,025	45,342	47,604	47,990	44,362	43,251	46,711	46,991	50,629				422,905
輸入量/Imports	4,610	3,049	3,247	3,004	2,529	2,751	2,757	2,678	2,663				27,288
合計/Supplied Quantity	54,635	48,391	50,851	50,994	46,891	46,002	49,468	49,669	53,292				450,193

○乳製品相場/Dairy Products (P8)

脱脂粉乳 (CIF、ALIC分、円/kg)/Skim milk (CIF、ALIC purchase price)

出所: 農畜産業振興機構(全て単純平均金単価)/Source: Agriculture & Livestock Industries Corporation (all graphs based on average price (yen/kg))

	Apr	May	Jun	Jul	Aug	Sep	Oct	Nov	Dec	Jan	Feb	Mar	Average
FY 2019/3	205	253	202	209	223	239	223	231	231	210	228	229	224
FY 2020/3	242	242	303	283	288	280	283	286	267	290	314	315	283
FY 2021/3	309	321	305	304	354								319

ナチュラルチーズ (CIF、円/kg)/Natural cheese (CIF)

出所: 農畜産業振興機構(全て単純平均金単価)/Source: Agriculture & Livestock Industries Corporation (all graphs based on average price (yen/kg))

	Apr	May	Jun	Jul	Aug	Sep	Oct	Nov	Dec	Jan	Feb	Mar	Average
FY 2019/3	485	488	487	482	487	491	510	490	508	496	478	486	491
FY 2020/3	469	475	474	460	453	460	462	478	479	471	476	479	470
FY 2021/3	458	452	475	463	464	465	452	449	455	447			458

○「家計調査」購入数量/Family Income and Expenditure Survey:Quantity Purchase (P9,15)

出所:総務省「家計調査」

Source:Ministry of Internal Affairs and Communications "Family Income and Expenditure Survey"

Two-or-more-person Households(Not including agricultural,forestry and fisheries households)

(g)

2019	Jan	Feb	Mar	Apr	May	Jun	Jul	Aug	Sep	Oct	Nov	Dec
ハム・ソーセージ・ベーコン購入数量/Hams and Sausages, and Bacons	685	672	766	756	817	805	843	814	770	811	829	987
牛肉購入数量/Beef	548	492	571	521	560	525	522	558	484	478	561	738
豚肉購入数量/Pork	1,871	1,715	1,876	1,720	1,704	1,768	1,720	1,630	1,698	1,808	1,784	1,884
鶏肉購入数量/Chicken	1,429	1,397	1,428	1,365	1,418	1,437	1,298	1,244	1,343	1,483	1,452	1,625

2020	Jan	Feb	Mar	Apr	May	Jun	Jul	Aug	Sep	Oct	Nov	Dec
ハム・ソーセージ・ベーコン購入数量/Hams and Sausages, and Bacons	680	734	851	890	908	845	886	857	836	807	863	1,037
牛肉購入数量/Beef	505	522	600	655	719	564	569	613	528	577	563	784
豚肉購入数量/Pork	1,737	1,810	2,044	2,058	2,024	1,881	1,845	1,827	1,769	1,915	1,920	2,143
鶏肉購入数量/Chicken	1,358	1,402	1,617	1,805	1,716	1,599	1,530	1,473	1,401	1,538	1,498	1,839

2021	Jan	Feb	Mar	Apr	May	Jun	Jul	Aug	Sep	Oct	Nov	Dec
ハム・ソーセージ・ベーコン購入数量/Hams and Sausages, and Bacons	751											
牛肉購入数量/Beef	581											
豚肉購入数量/Pork	1,989											
鶏肉購入数量/Chicken	1,582											

○「家計調査」支出金額/Family Income and Expenditure Survey:Expenditure (P9,15)

出所:総務省「家計調査」

(yen)

2019	Jan	Feb	Mar	Apr	May	Jun	Jul	Aug	Sep	Oct	Nov	Dec
ハム・ソーセージ・ベーコン支出金額/Hams and Sausages, and Bacons	1,053	1,040	1,189	1,169	1,246	1,278	1,324	1,281	1,201	1,241	1,318	1,693
牛肉支出金額//Beef	1,810	1,515	1,671	1,682	1,777	1,625	1,518	1,853	1,560	1,522	1,649	2,996
豚肉支出金額/Pork	2,592	2,425	2,538	2,394	2,393	2,408	2,358	2,335	2,438	2,555	2,516	2,685
鶏肉支出金額/Chicken	1,348	1,298	1,332	1,271	1,296	1,268	1,185	1,121	1,242	1,312	1,309	1,605

2020	Jan	Feb	Mar	Apr	May	Jun	Jul	Aug	Sep	Oct	Nov	Dec
ハム・ソーセージ・ベーコン支出金額/Hams and Sausages, and Bacons	1,056	1,106	1,283	1,345	1,405	1,337	1,401	1,353	1,259	1,266	1,390	1,748
牛肉支出金額//Beef	1,704	1,664	1,848	1,976	2,268	1,811	1,797	2,113	1,801	1,771	1,836	3,088
豚肉支出金額/Pork	2,469	2,545	2,820	2,907	2,942	2,678	2,671	2,710	2,605	2,751	2,746	3,017
鶏肉支出金額/Chicken	1,309	1,310	1,451	1,574	1,578	1,408	1,364	1,348	1,327	1,424	1,425	1,763

2021	Jan	Feb	Mar	Apr	May	Jun	Jul	Aug	Sep	Oct	Nov	Dec
ハム・ソーセージ・ベーコン支出金額/Hams and Sausages, and Bacons	1,144											
牛肉支出金額//Beef	1,920											
豚肉支出金額/Pork	2,817											
鶏肉支出金額/Chicken	1,469											

〒141-6013 東京都品川区大崎2-1-1
ThinkPark Tower
日本ハム株式会社 広報IR部
電話:03-4555-8024

Public & Investor Relations Department
NH Foods Ltd.
ThinkPark Tower
2-1-1 Osaki, Shinagawa-ku, Tokyo 141-6013
Tel: +81-3-4555-8024