

2022年4月度 市場動向資料集

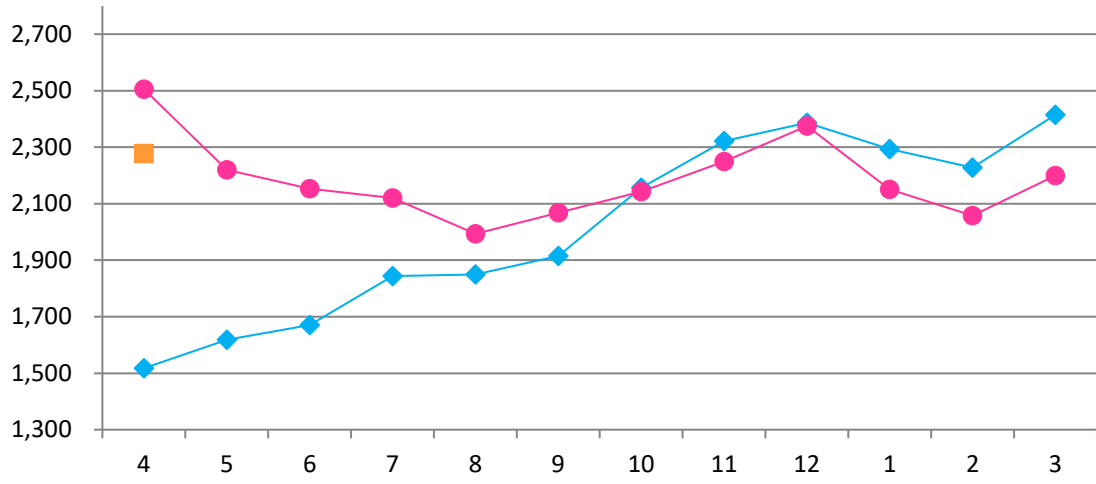
April 2022 Market Trends

日本ハム株式会社

NH Foods Ltd.

May 25, 2022

【去勢和牛 A-3卸売価格(東京市場、税込)】
Tokyo Market A-3 Wagyu Steer Prices, Tax Included
(¥/kg)



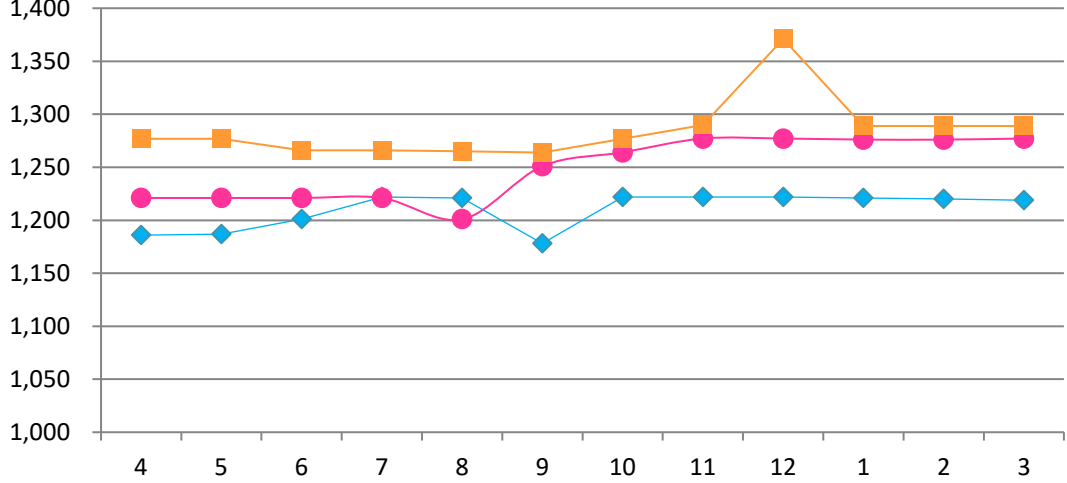
A-3: 格付けランク、歩留まり等級A~C / 肉質等級1~5

◆ 2021年3月期 FY 2021/3
● 2022年3月期 FY 2022/3
■ 2023年3月期 FY 2023/3

(¥/kg)	
前期差 Comparison with the previous year	前月差 Comparison with The previous month
-227	79

グラフ資料出所: 東京食肉市場株式会社
Date Source: Tokyo Meat Market Co. Ltd

【豪州産チルドビーフ ショートグレインフルセット価格】
Australian Chilled Beef [Full Set (Short Grain Fed)] Prices
(¥/kg)



ショートグレイン: 穀物肥育期間 100日以上
フルセット: セット販売(基本12部位) ⇔ パーツ販売

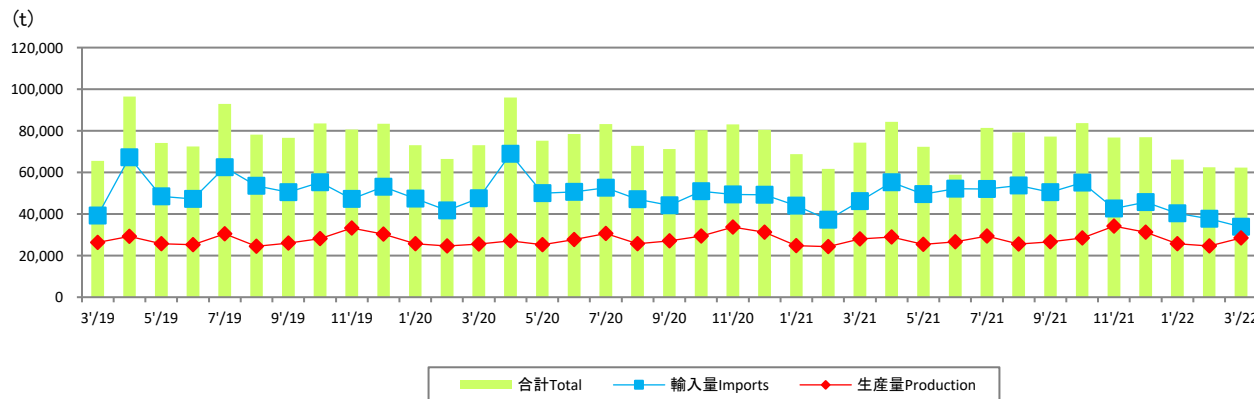
◆ 2020年3月期 FY 2020/3
● 2021年3月期 FY 2021/3
■ 2022年3月期 FY 2022/3

(¥/kg)	
前期差 Comparison with the previous year	前月差 Comparison with The previous month
12	0

グラフ資料出所: 農畜産業振興機構(全て単純平均単価)
Date Source: Agriculture & Livestock Industries Corporation
(all graphs based on average prices)

【生産量と輸入量】

Production and Imports



グラフ資料出所: 農畜産業振興機構

Source: Agriculture & Livestock Industries Corporation

注: 数量は部分肉ベース。輸入量は煮沸肉並びにくず肉のうちほほ肉及び頭肉のみ含む。

Notes: 1. Boneless cuts equivalent

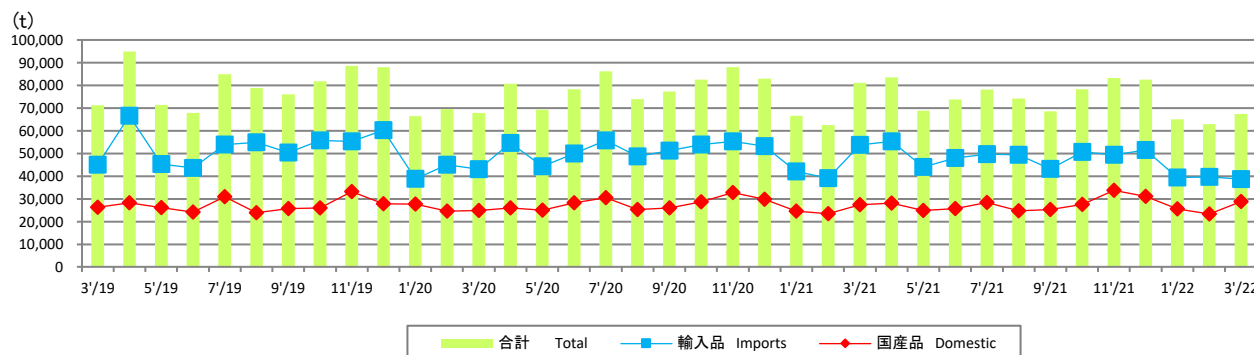
2. Figures for stocks are estimated by ALIC

	前期差 Comparison with The previous year	前月差 Comparison with The previous month
輸入量 Imports	-12,287	-3,859
生産量 Production	396	3,845

【推定出回り量】

Estimated Marketing Quantity

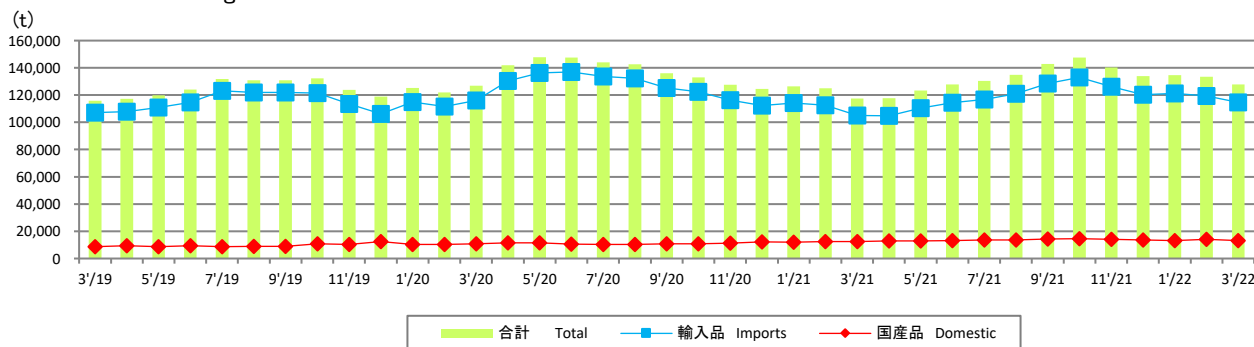
推定出回り量: 推定期首在庫+生産量+輸入量-輸出量-推定期末在庫



	前期差 Comparison with The previous year	前月差 Comparison with The previous month
輸入品 Imports	-15,114	-991
国産品 Domestic	1,414	5,479

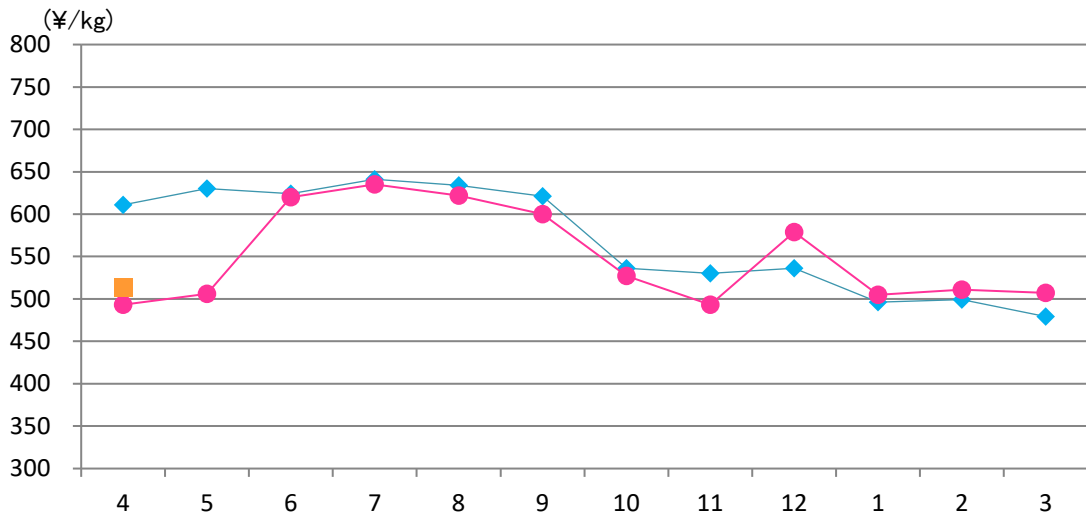
【推定期末在庫】

Estimated Ending Stock

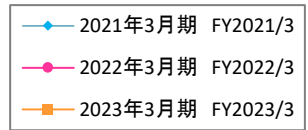


	前期差 Comparison with The previous year	前月差 Comparison with The previous month
輸入品 Imports	9,724	-4,759
国産品 Domestic	626	-901

【豚肉枝肉卸売価格 上物 東京食肉市場平均価格 税込】
Pork Carcass Prices (Tokyo Market Excellent Grade, monthly average, Tax Included)



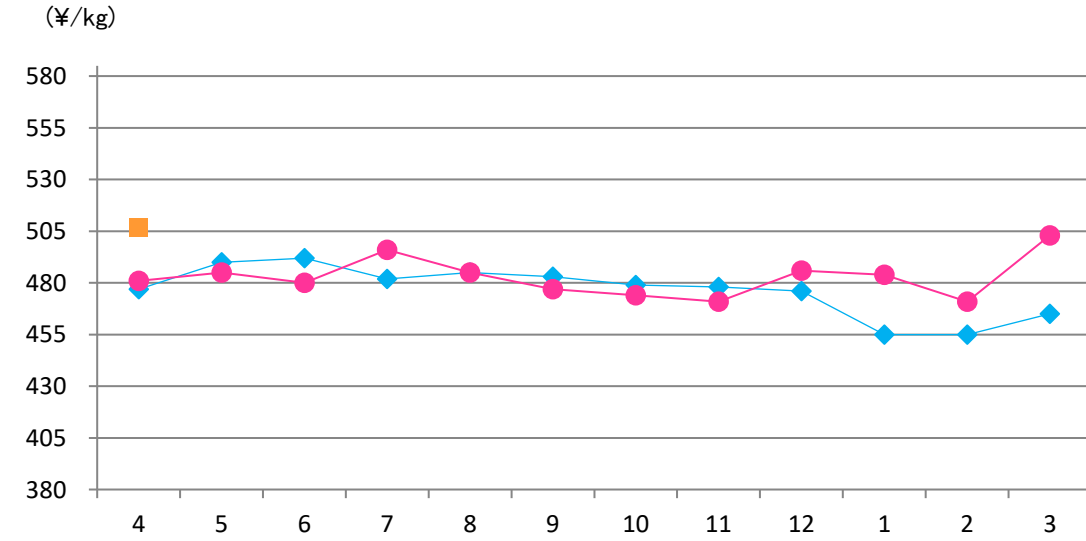
上物: 等級(極上、上、中、並、等外)



前期差 Comparison with the previous year	前月差 Comparison with The previous month
20	6

グラフ資料出所: 東京食肉市場株式会社
Date Source: Tokyo Meat Market Co. Ltd

【U.S.冷凍ウデ(英名:ピクニック)価格】
U.S. Frozen Pork (Picnic) Prices



ウデ: 加工豚肉原料

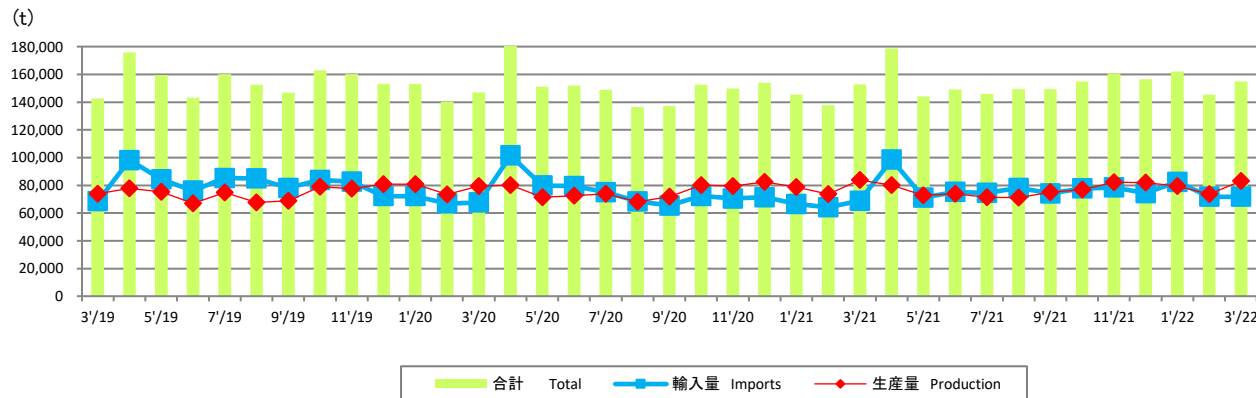


前期差 Comparison with the previous year	前月差 Comparison with The previous month
26	4

グラフ資料出所: 農畜産業振興機構(全て単純平均単価)
Date Source: Agriculture & Livestock Industries Corporation
(all graphs based on average prices)

【生産量と輸入量】

Production and Imports



グラフ資料出所: 農畜産業振興機構

Source: Agriculture & Livestock Industries Corporation

注: 数量は部分肉ベース。輸入量は煮沸肉並びにくず肉のうちほほ肉及び頭肉のみ含む。

Notes: 1. Boneless cuts equivalent

2. Figures for stocks are estimated by ALIC

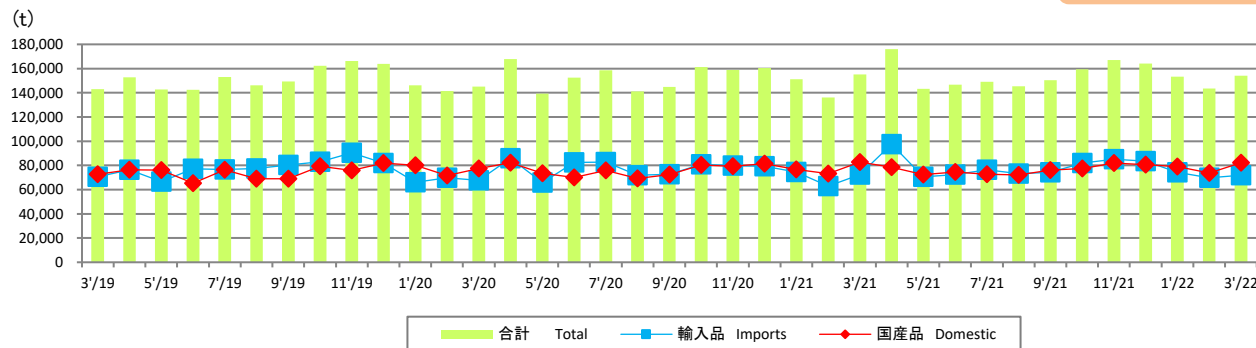
(t)

	前期差 Comparison with The previous year	前月差 Comparison with The previous month
輸入量 Imports	2,881	25
生産量 Production	-837	9,436

【推定出回り量】

Estimated Marketing Quantity

推定出回り量: 推定期首在庫+生産量+輸入量-輸出量-推定期末在庫

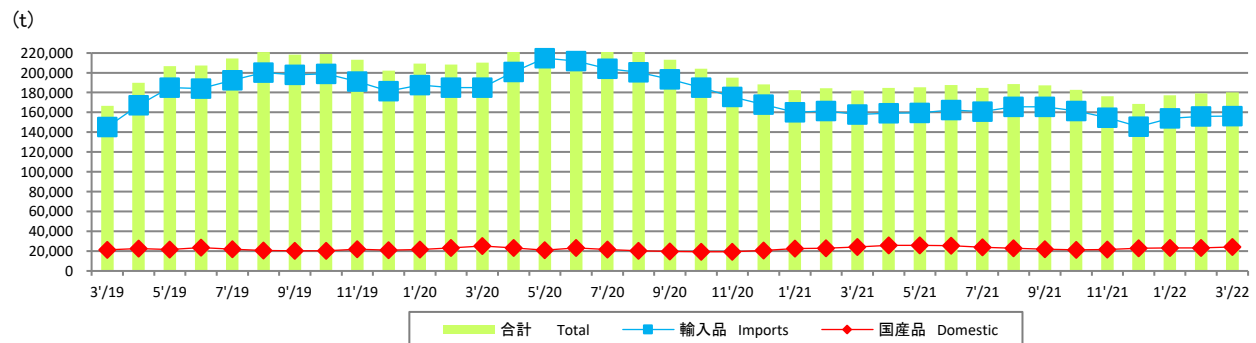


(t)

	前期差 Comparison with The previous year	前月差 Comparison with The previous month
輸入品 Imports	-697	1,955
国産品 Domestic	-436	8,527

【推定期末在庫】

Estimated Ending Stock

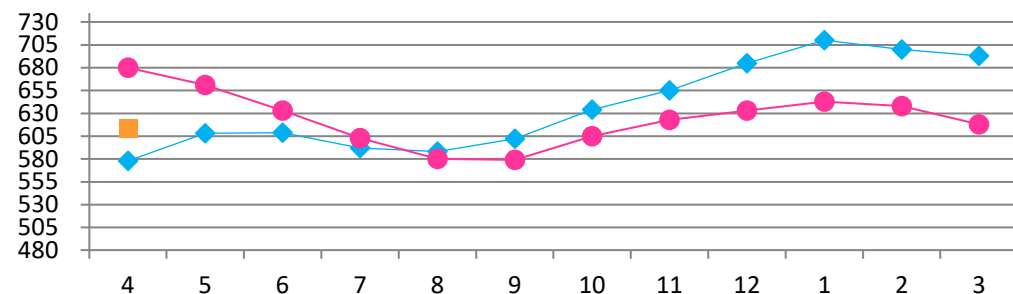


(t)

	前期差 Comparison with The previous year	前月差 Comparison with The previous month
輸入品 Imports	-1,786	59
国産品 Domestic	-103	840

【鶏肉卸売価格(モモ肉、税抜)】

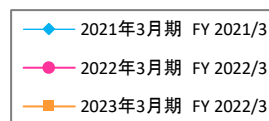
Domestic Chicken Thigh Meat Wholesale Prices
(¥/kg)



グラフ資料出所: 食品産業新聞社畜産日報掲載分から単純平均単価

Date Source: "DAILY MEAT & LIVESTOCK"

which is a trade business paper published in Japan(all graphs based on Average Price)

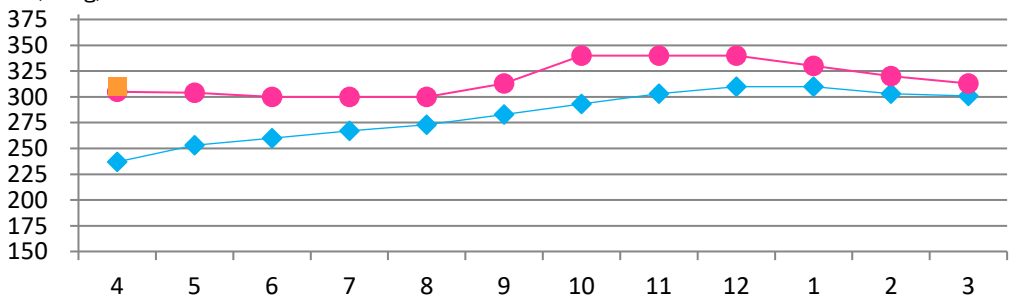


(¥/kg)

前期差 Comparison with the previous year	前月差 Comparison with The previous month
-67	-5

【鶏肉卸売価格(ムネ肉、税抜)】

Domestic Chicken Breast Meat Wholesale Prices
(¥/kg)

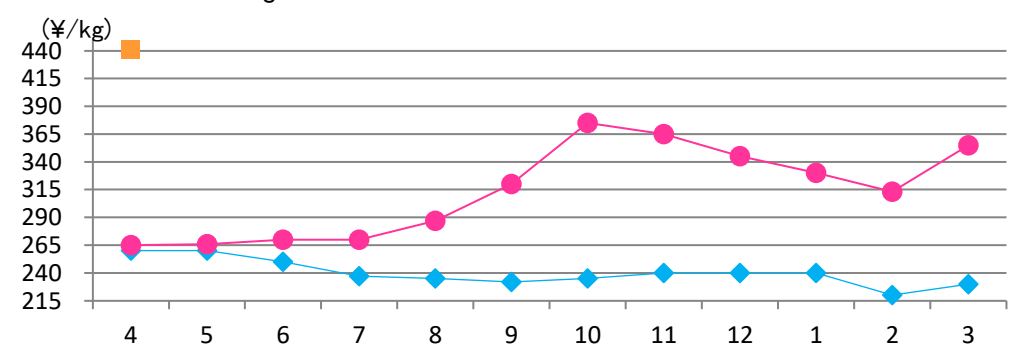


(¥/kg)

前期差 Comparison with the previous year	前月差 Comparison with The previous month
5	-3

【ブラジル産もも肉価格】

Brazilian Chicken Thigh Prices
(¥/kg)

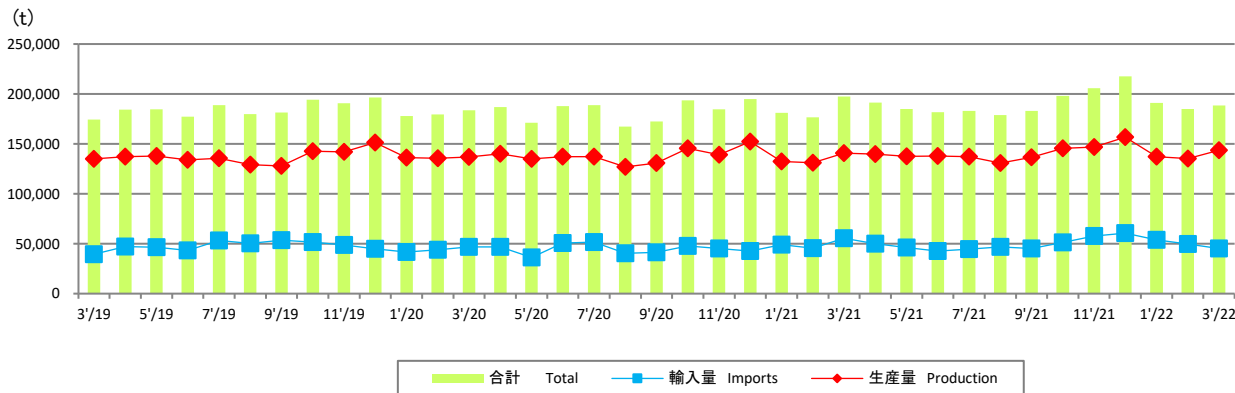


(¥/kg)

前期差 Comparison with the previous year	前月差 Comparison with The previous month
176	86

【生産量と輸入量】

Production and Imports



グラフ資料出所: 農畜産業振興機構

Source: Agriculture & Livestock Industries Corporation

注: 生産量は骨付き肉ベース。成鶏肉を含む。輸入量には鶏肉以外の家禽肉を含まない。

注: 生産量、国産品の推定出回り量は2010年2月をもって公表終了。

Notes: 1. *Bone in cuts equivalent

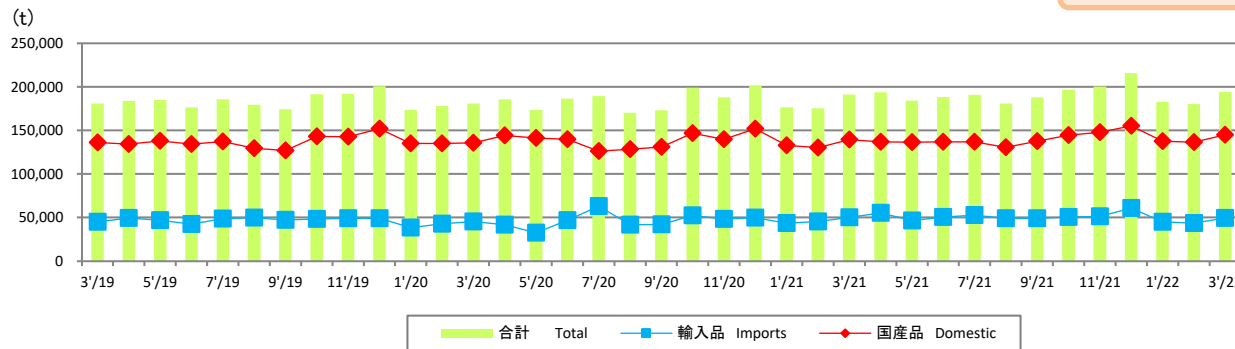
2. Figures for stocks are estimated by ALIC

3. *The production quantity and the estimated marketing quantity on the domestic one are made public only until February,2010.

	前期差 Comparison with The previous year	前月差 Comparison with The previous month
輸入量 Imports	-10,492	-4,437
生産量 Production	2,679	8,125

【推定出回り量】

Estimated Marketing Quantity

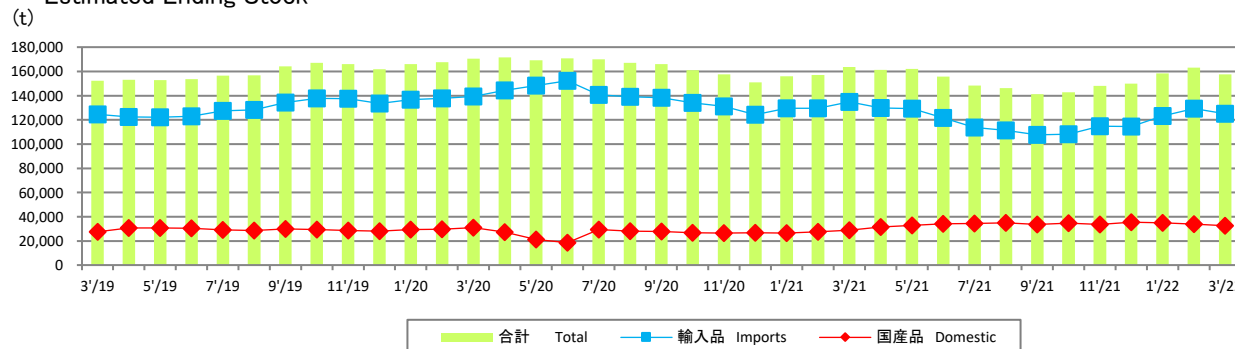


推定出回り量: 推定期首在庫+生産量+輸入量-輸出量-推定期末在庫

	前期差 Comparison with The previous year	前月差 Comparison with The previous month
輸入品 Imports	-1,052	5,736
国産品 Domestic	5,353	8,342

【推定期末在庫】

Estimated Ending Stock

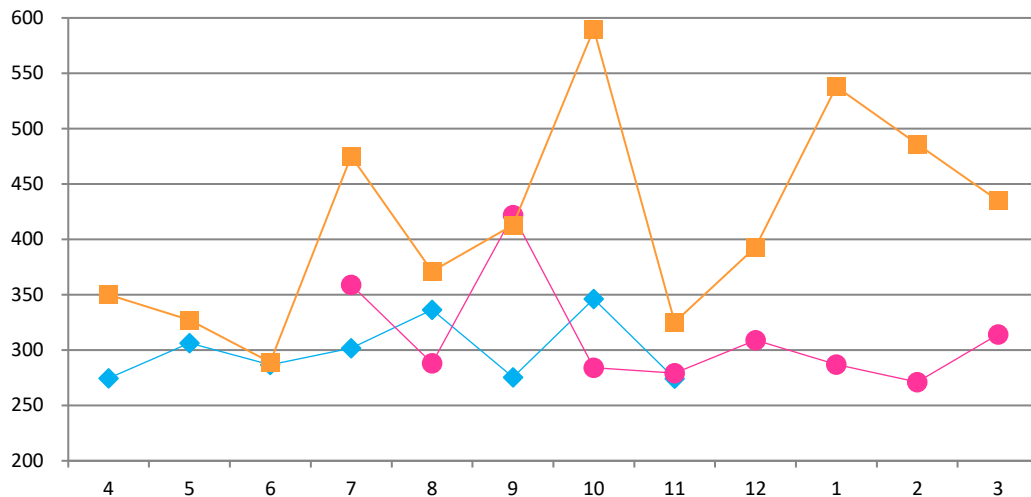


	前期差 Comparison with The previous year	前月差 Comparison with The previous month
輸入品 Imports	-9,862	-4,112
国産品 Domestic	3,713	-1,408

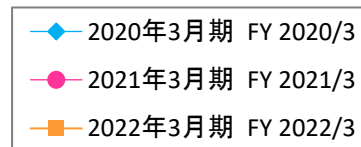
【脱脂粉乳輸入価格(CIF)】

Skim milk (CIF others price)

(¥/kg)



(¥/kg)



前期差 Comparison with the previous year	前月差 Comparison with The previous month
121	-51

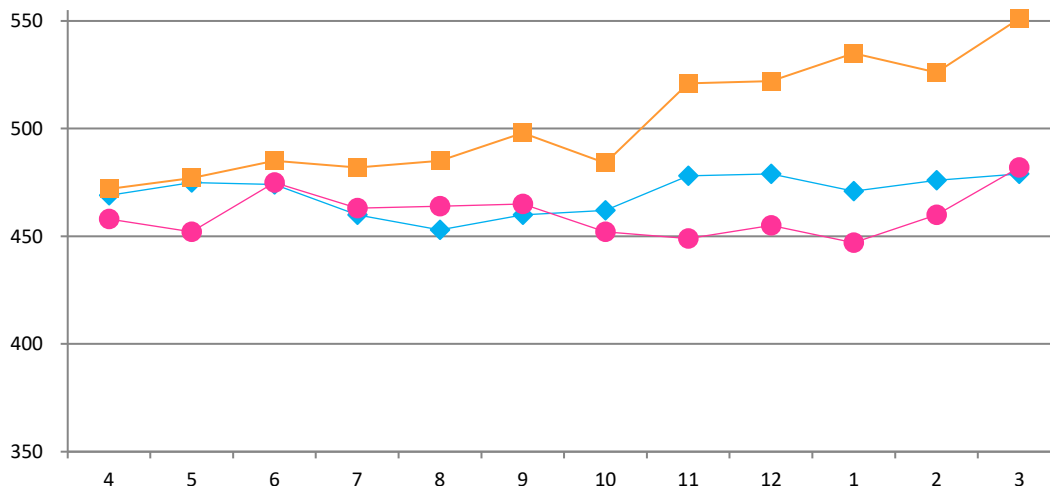
グラフ資料出所: 農畜産業振興機構(全て単純平均単価)

Source: Agriculture & Livestock Industries Corporation (all graphs based on average prices)

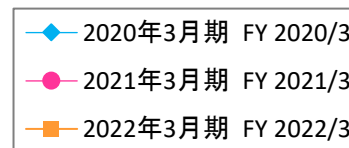
【ナチュラルチーズ輸入価格】

Natural cheese(CIF)

(¥/kg)



(¥/kg)

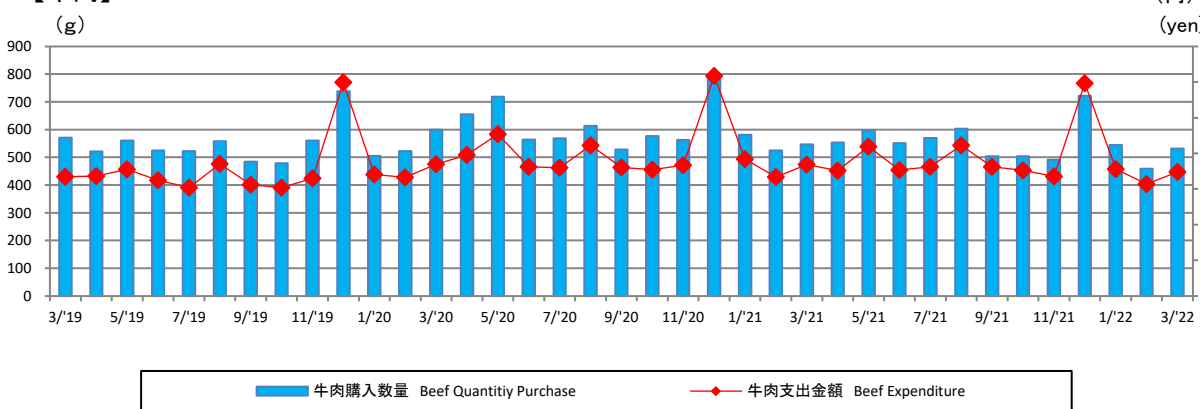


前期差 Comparison with the previous year	前月差 Comparison with The previous month
69	25

グラフ資料出所: 農畜産業振興機構(全て単純平均単価)

Source: Agriculture & Livestock Industries Corporation (all graphs based on average prices)

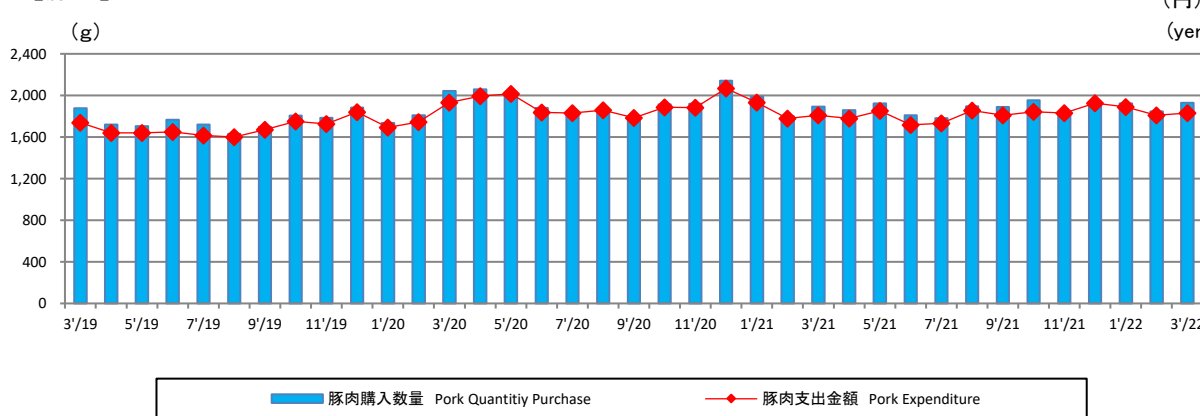
【牛肉】 Beef



グラフ資料出所: 総務省「家計調査」
 Source: Ministry of Internal Affairs and Communications "Family Income and Expenditure Survey"
 二人以上の世帯(農林漁家世帯を除く)
 Two-or-more-person Households (Not including agricultural, forestry and fisheries households)

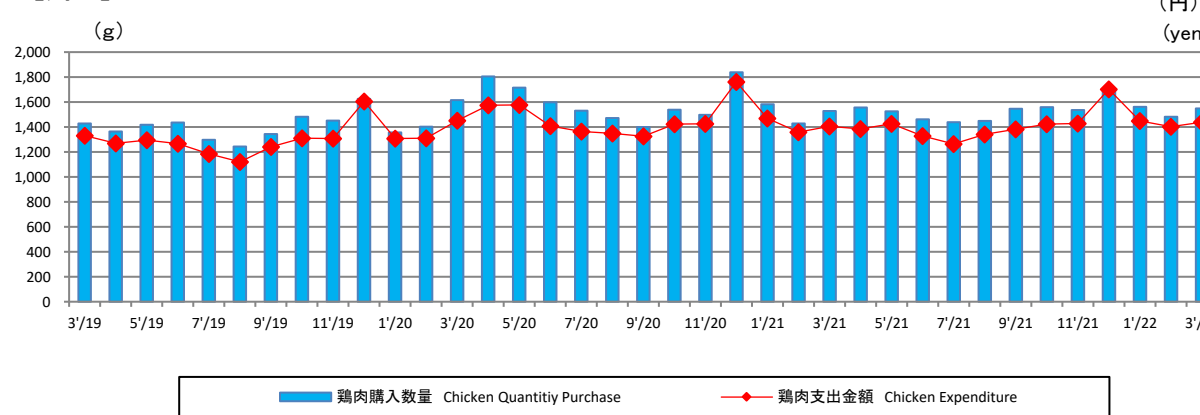
	前期差 Comparison with The previous year	前月差 Comparison with The previous month
購入数量(g) Quantity Purchase(g)	-15	73
支出金額(円) Expenditure (yen)	-106	168

【豚肉】 Pork



	前期差 Comparison with The previous year	前月差 Comparison with The previous month
購入数量(g) Quantity Purchase(g)	36	82
支出金額(円) Expenditure (yen)	31	32

【鶏肉】 Chicken



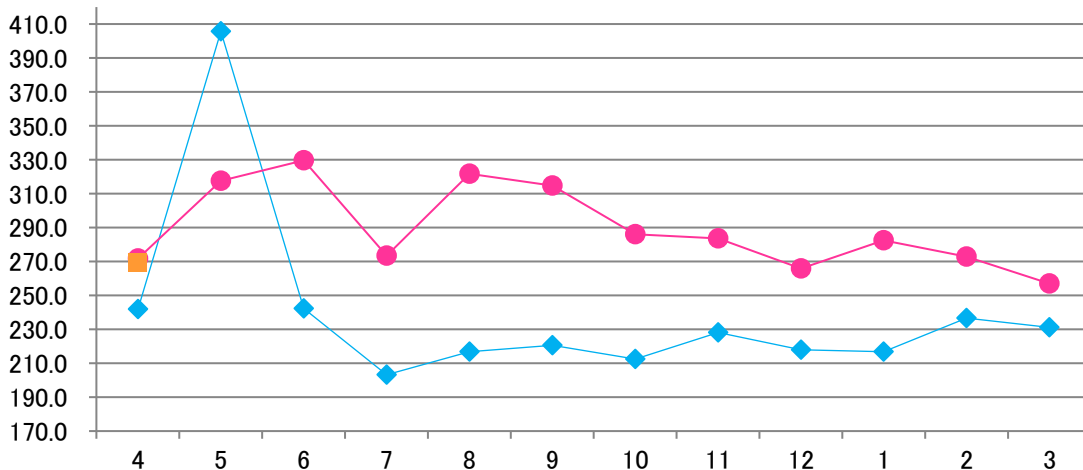
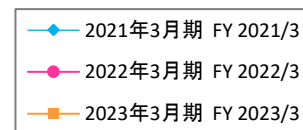
	前期差 Comparison with The previous year	前月差 Comparison with The previous month
購入数量(g) Quantity Purchase(g)	22	67
支出金額(円) Expenditure (yen)	33	35

【米国産 牛肉カットアウトバリュー 枝肉ベース】

U.S. Beef Boxed cutout, Choice 1-3, 600-900 lbs

(ドル/100ポンド)
(US \$/cwt)

カットアウトバリュー: 各部分肉の卸売価格を1頭分の枝肉に再構成した卸売指標価格



(ドル/100ポンド)
(US \$/cwt)

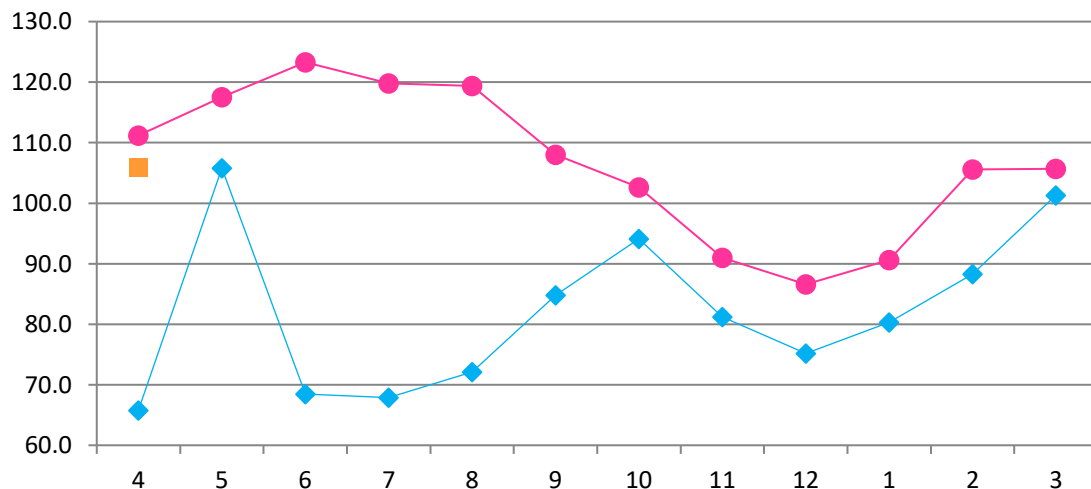
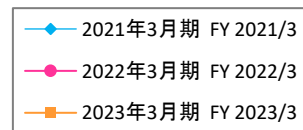
前期差 Comparison with the previous year	前月差 Comparison with The previous month
-2.2	12.5

グラフ資料出所: 米国食肉輸出連合会
Source: U.S. Meat Export Federation

【米国産 豚肉カットアウトバリュー 枝肉ベース】

U.S. Pork Cutout composite carcass, 53-54% lean

(ドル/100ポンド)
(US \$/cwt)



(ドル/100ポンド)
(US \$/cwt)

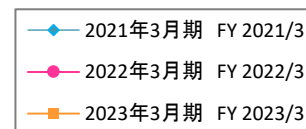
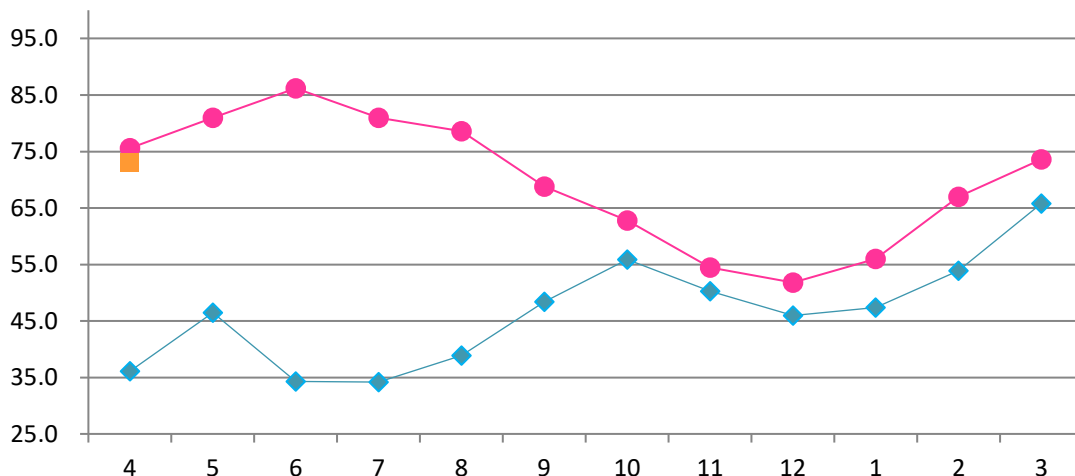
前期差 Comparison with the previous year	前月差 Comparison with The previous month
-5.2	0.3

グラフ資料出所: 米国食肉輸出連合会
Source: U.S. Meat Export Federation

【米国産 肥育豚価格(生産者販売価格)】

Live U.S. Fattening Pig Prices (Pig Sales Price)

(セント/ポンド)
(US ¢/lb)



(セント/ポンド)
(US ¢/lb)

前期差 Comparison with the previous year	前月差 Comparison with The previous month
-2.6	-0.6

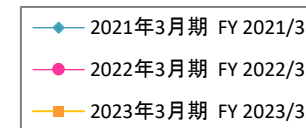
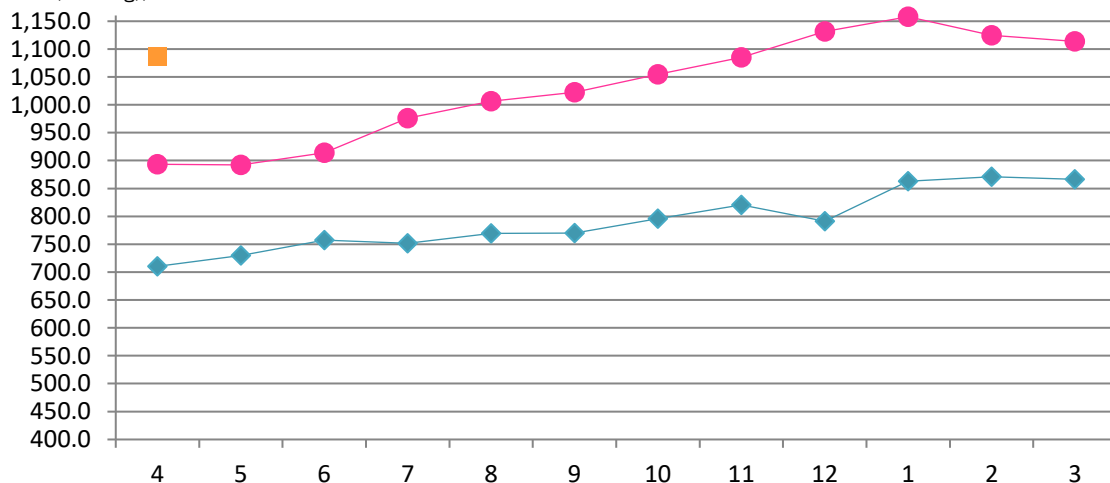
グラフ資料出所: 農畜産業振興機構 (全て単純平均単価)
Source: Agriculture & Livestock Industries Corporation (all graphs based on average prices)

【豪州産 若齢牛価格(生産者販売価格)】

Eastern Young Cattle Indicator (EYCI)

(豪セント/kg)
(A ¢/kg)

若齢牛価格: 豪州東部3州の主要家畜市場の若齢牛の加重平均取引価格

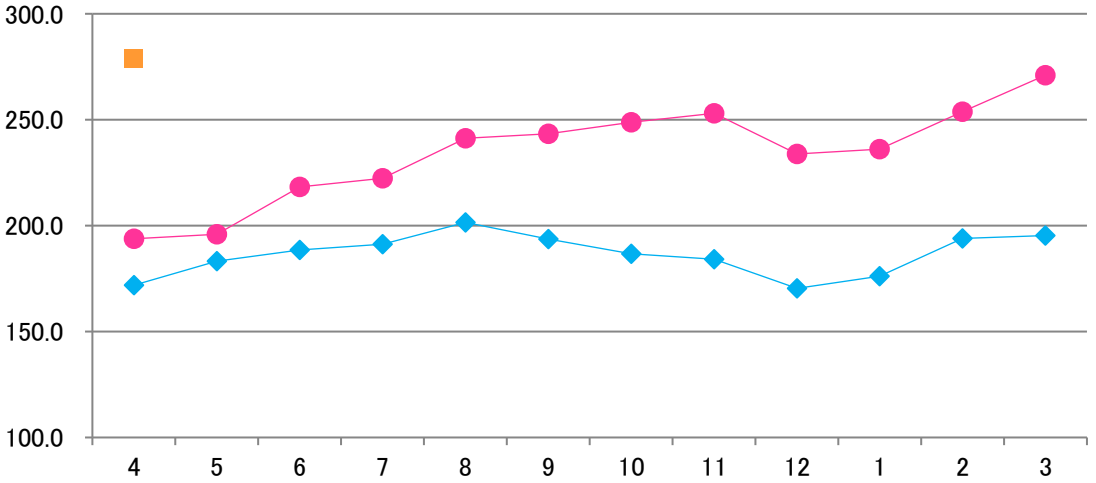


(豪セント/kg)
(A ¢/kg)

前期差 Comparison with the previous year	前月差 Comparison with The previous month
193.2	-26.7

グラフ資料出所: 農畜産業振興機構 (全て単純平均単価)
Source: Agriculture & Livestock Industries Corporation (all graphs based on average prices)

【ウルグアイ 牛価格 生体ベース】
 Uruguay cattle prices, >380kg
 (ドル/100kg)
 (US \$/lwt)

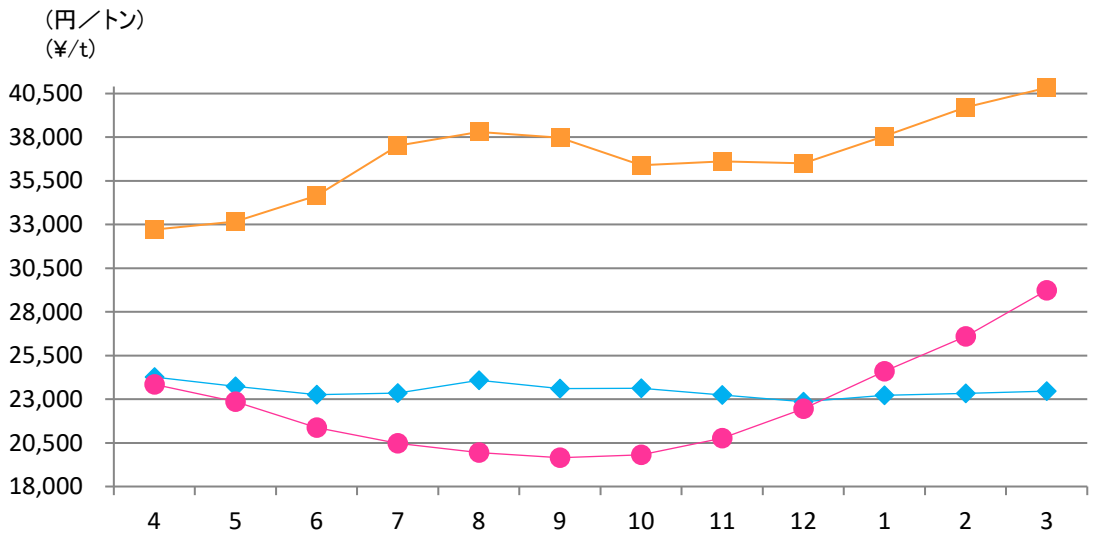


◆ 2021年3月期 FY 2021/3
 ● 2022年3月期 FY 2022/3
 ■ 2023年3月期 FY 2023/3

(ドル/100kg) (US \$/lwt)	
前期差 Comparison with the previous year	前月差 Comparison with The previous month
85.1	7.9

グラフ資料出所: 豪州食肉家畜生産者事業団 & ウルグアイINAC
 Source: Meat & Livestock Australia Ltd & Uruguay Instituto Nacional de Carnes

【とうもろこしの輸入価格】 Imported Corn Prices

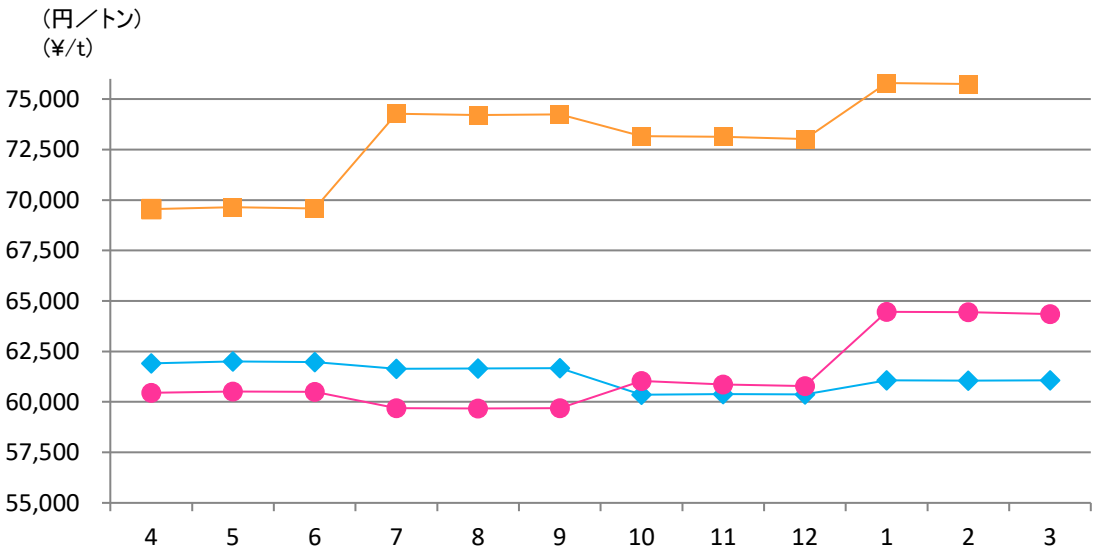


- ◆ 2020年3月期 FY 2020/3
- 2021年3月期 FY 2021/3
- 2022年3月期 FY 2022/3

前期差 Comparison with the previous year	前月差 Comparison with The previous month
11,585	1,123

グラフ資料出所: 農畜産業振興機構 (全て単純平均単価)
Source: Agriculture & Livestock Industries Corporation (all graphs based on average prices)

【配合飼料の価格】 Mixed Feed Prices



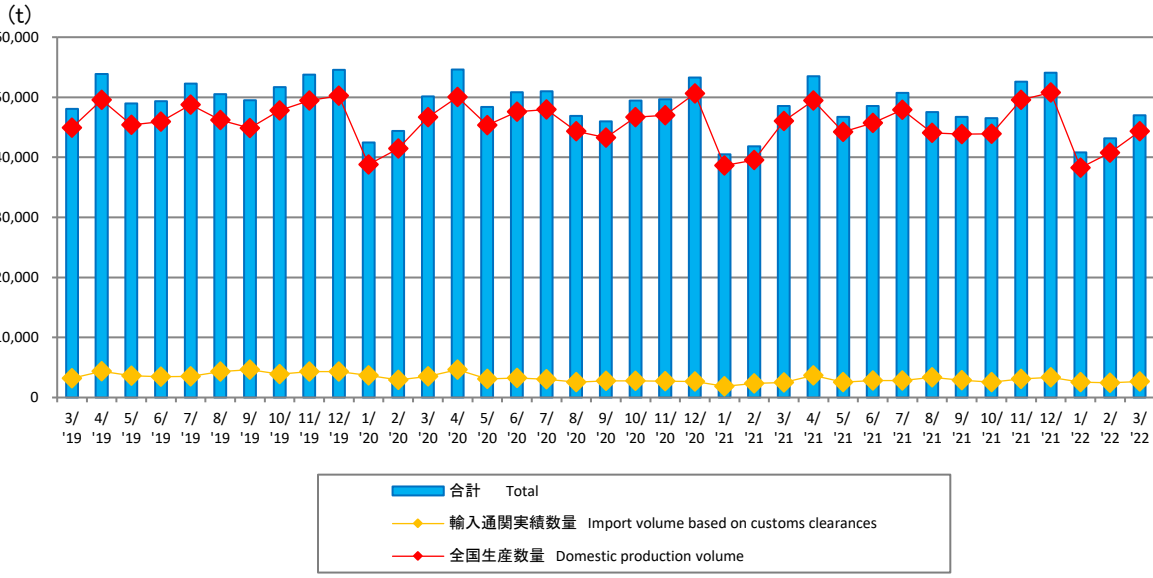
- ◆ 2020年3月期 FY 2020/3
- 2021年3月期 FY 2021/3
- 2022年3月期 FY 2022/3

前期差 Comparison with the previous year	前月差 Comparison with The previous month
11,307	-53

グラフ資料出所: 農畜産業振興機構 (全て単純平均単価)
Source: Agriculture & Livestock Industries Corporation (all graphs based on average prices)

【ハム・ソーセージ全国生産数量・輸入通関実績数量】

Production and Import Volume Based on Customs Clearances for Hams and Sausages

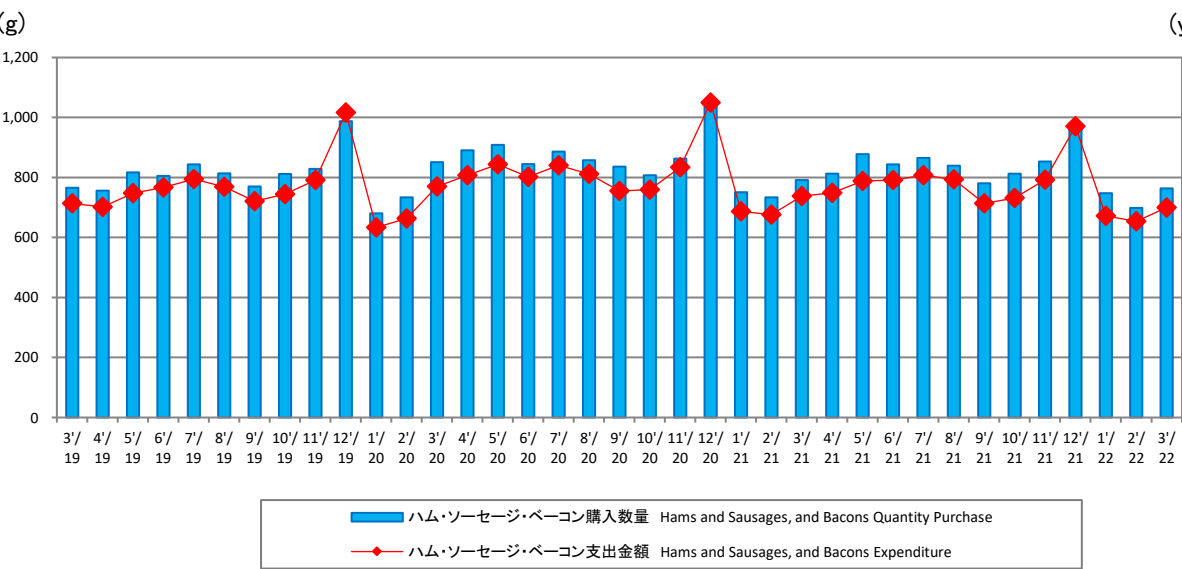


グラフ資料出所: 日本食肉加工協会
Source: Japan Meat Processor Association

	前期差 Comparison with The previous year	前月差 Comparison with The previous month
輸入量 Imports	160	224
生産数量 Production	-1,721	3,598

【家計調査 ハム・ソーセージ・ベーコン購入数量/支出金額】

Family Income and Expenditure Survey for Hams and Sausages, and Bacons



グラフ資料出所: 総務省「家計調査」
Source: Ministry of Internal Affairs and Communications "Family Income and Expenditure Survey"
二人以上の世帯(農林漁家世帯を除く)
Two-or-more-person Households (Not including agricultural, forestry and fisheries households)

	前期差 Comparison with The previous year	前月差 Comparison with The previous month
購入数量(g) Quantity Purchase(g)	-28	65
支出金額(円) Expenditure (yen)	-63	77

○牛肉相場/Beef Prices (P2)

去勢和牛 A-3 (東京市場、税込、円/KG)/Tokyo Market A-3 Wagyu Steer Prices, Tax Included

出所: 東京食肉市場株式会社/Data Source: Tokyo Meat Market Co.Ltd (yen/kg)

	Apr	May	Jun	Jul	Aug	Sep	Oct	Nov	Dec	Jan	Feb	Mar	Average
FY2021/3	1,518	1,618	1,671	1,844	1,849	1,915	2,157	2,322	2,387	2,294	2,228	2,415	2,018
FY2022/3	2,505	2,220	2,153	2,120	1,993	2,068	2,143	2,249	2,375	2,151	2,058	2,199	2,186
FY2023/3	2,278												2,278

豪州チルドビーフ ショートグレインフルセット(円/KG)/Australian Chilled Beef [Full Set (Short Grain Fed)] Prices

出所: 農畜産業振興機構(全て単純平均単価)/Data Source: Agriculture & Livestock Industries Corporation (all graphs based on average price) (yen/kg)

	Apr	May	Jun	Jul	Aug	Sep	Oct	Nov	Dec	Jan	Feb	Mar	Average
FY2020/3	1,186	1,187	1,201	1,222	1,221	1,178	1,222	1,222	1,222	1,221	1,220	1,219	1,210
FY2021/3	1,221	1,221	1,221	1,221	1,201	1,251	1,264	1,277	1,277	1,276	1,276	1,277	1,249
FY2022/3	1,277	1,277	1,266	1,266	1,265	1,264	1,277	1,290	1,371	1,289	1,289	1,289	1,285

○豚肉相場/Pork Prices(I)

豚肉枝肉卸売価格 上物 東京市場平均価格、税込(円/KG)/Pork Carcass Prices (Tokyo Market Excellent grade, monthly average, Tax Included)

出所: 東京食肉市場株式会社/Data Source: Tokyo Meat Market Co.Ltd (yen/kg)

	Apr	May	Jun	Jul	Aug	Sep	Oct	Nov	Dec	Jan	Feb	Mar	Average
FY2021/3	611	630	624	641	634	621	536	530	536	496	499	479	570
FY2022/3	493	506	620	635	622	600	527	493	579	505	511	507	550
FY2023/3	513												513

US冷凍ウデ(ピクニック) (円/KG)/U.S. Frozen Pork (Picnic) Prices

※ピクニックとは部位の名前です。

出所: 農畜産業振興機構(全て単純平均単価)/Data Source: Agriculture & Livestock Industries Corporation (all graphs based on average price) (yen/kg)

	Apr	May	Jun	Jul	Aug	Sep	Oct	Nov	Dec	Jan	Feb	Mar	Average
FY2021/3	477	490	492	482	485	483	479	478	476	455	455	465	476
FY2022/3	481	485	480	496	485	477	474	471	486	484	471	503	483
FY2023/3	507												507

○鶏肉相場/Chicken Prices(P6)

鶏肉卸売価格(モモ肉、税抜、円/KG)/Domestic Chicken Thigh Meat Wholesale Prices

出所: 食品産業新聞社畜産日報掲載分から単純平均単価

Data Source: "DAILY MEAT & LIVESTOCK" which is a trade business paper published in Japan(all graphs based on average price) (yen/kg)

	Apr	May	Jun	Jul	Aug	Sep	Oct	Nov	Dec	Jan	Feb	Mar	Average
FY2021/3	578	608	609	592	588	602	634	655	685	710	700	693	638
FY2022/3	680	661	633	603	580	579	605	623	633	643	638	618	625
FY2023/3	613												613

鶏肉卸売価格(ムネ肉、税抜、円/KG)/Domestic Chicken Breast Meat Wholesale Prices

出所: 食品産業新聞社畜産日報掲載分から単純平均単価

Data Source: "DAILY MEAT & LIVESTOCK" which is a trade business paper published in Japan(all graphs based on average price) (yen/kg)

	Apr	May	Jun	Jul	Aug	Sep	Oct	Nov	Dec	Jan	Feb	Mar	Average
FY2021/3	237	253	260	267	273	283	293	303	310	310	303	301	283
FY2022/3	305	304	300	300	300	313	340	340	340	330	320	313	317
FY2023/3	310												310

ブラジル もも肉価格(円/KG)/Brazilian Chicken Thigh Prices

出所: 食品産業新聞社畜産日報掲載分から単純平均単価

Data Source: "DAILY MEAT & LIVESTOCK" which is a trade business paper published in Japan(all graphs based on average price) (yen/kg)

	Apr	May	Jun	Jul	Aug	Sep	Oct	Nov	Dec	Jan	Feb	Mar	Average
FY2021/3	260	260	250	237	235	232	235	240	240	240	220	230	240
FY2022/3	265	266	270	270	287	320	375	365	345	330	313	355	313
FY2023/3	441												441

○海外食肉相場/Market Trend in Overseas Cutout Value Prices (P10)

米国産 牛肉カットアウトバリュー 枝肉ベース (ドル/100ポンド)/U.S. Beef Boxed cutout, Choice 1-3, 600-900 lbs

出所：米国食肉輸出連合会/Source: U.S. Meat Export Federation

(US\$/cwt)

	Apr	May	Jun	Jul	Aug	Sep	Oct	Nov	Dec	Jan	Feb	Mar	Average
FY2021/3	241.9	405.8	242.3	203.2	216.7	220.6	212.4	228.0	217.8	216.7	236.5	231.2	239.4
FY2022/3	271.7	317.6	329.7	273.4	321.7	314.8	286.0	283.5	265.8	282.5	272.8	257.0	289.7
FY2023/3	269.5												269.5

米国産 豚肉カットアウトバリュー 枝肉ベース (ドル/100ポンド)/U.S. Pork Cutout composite carcass, 53-54% lean

出所：米国食肉輸出連合会/Source: U.S. Meat Export Federation

(US\$/cwt)

	Apr	May	Jun	Jul	Aug	Sep	Oct	Nov	Dec	Jan	Feb	Mar	Average
FY2021/3	65.8	105.8	68.5	67.9	72.1	84.8	94.1	81.2	75.2	80.3	88.3	101.3	82.1
FY2022/3	111.2	117.5	123.3	119.8	119.4	108.0	102.6	91.0	86.6	90.6	105.6	105.7	106.8
FY2023/3	106.0												106.0

○海外生体相場/Market Trend in Overseas Livestock Prices (P11~12)

米国 肥育豚価格 (生産者販売価格、セント/ポンド)/Live U.S. Fattening Pig Prices (Pig sales price)

出所：農畜産業振興機構(全て単純平均単価)/Source: Agriculture & Livestock Industries Corporation (all graphs based on average price) (US¢/lb)

	Apr	May	Jun	Jul	Aug	Sep	Oct	Nov	Dec	Jan	Feb	Mar	Average
FY2021/3	36.1	46.5	34.3	34.2	38.9	48.4	55.9	50.3	46.0	47.4	53.9	65.8	46.5
FY2022/3	75.6	81.0	86.2	81.0	78.6	68.8	62.8	54.5	51.8	56.0	67.0	73.6	69.7
FY2023/3	73.0												73.0

豪州 若齢牛価格 (生産者販売価格、豪セント/KG)/Eastern Young Cattle Indicator (EYCI)

出所：豪州食肉家畜生産者事業団/Source: Meat & Livestock Australia Ltd

(A\$/kg)

	Apr	May	Jun	Jul	Aug	Sep	Oct	Nov	Dec	Jan	Feb	Mar	Average
FY2021/3	710.3	730.0	757.5	751.9	769.3	770.2	795.7	820.5	791.5	863.1	870.8	866.4	791.4
FY2022/3	893.6	892.1	914.1	975.8	1,006.2	1,022.6	1,054.6	1,085.1	1,131.7	1,157.9	1,124.4	1,113.5	1,031.0
FY2023/3	1,086.8												1,086.8

ウルグアイ 牛生体価格 生体ベース (ドル/100kg)/Uruguay Cattle Prices, >380kg

出所：豪州食肉家畜生産者事業団/Source: Meat & Livestock Australia Ltd

(US\$/lwt)

：Uruguay Instituto Nacional de Carnes

	Apr	May	Jun	Jul	Aug	Sep	Oct	Nov	Dec	Jan	Feb	Mar	Average
FY2021/3	171.9	183.2	188.5	191.3	201.4	193.6	186.7	184.2	170.4	176.2	193.9	195.3	186.4
FY2022/3	193.8	195.9	218.2	222.4	241.2	243.4	248.8	253.0	233.8	236.1	253.8	271.0	234.3
FY2023/3	278.9												278.9

○飼料価格相場/Market Trends in Grain Feed Prices(P13~14)

とうもろこしの輸入価格(円/トン)/Imported Corn Prices

出所：農畜産業振興機構(全て単純平均単価)/Source：Agriculture & Livestock Industries Corporation (all graphs based on average price(yen/t))

	Apr	May	Jun	Jul	Aug	Sep	Oct	Nov	Dec	Jan	Feb	Mar	Average
FY2020/3	24,274	23,736	23,256	23,355	24,091	23,607	23,633	23,250	22,860	23,234	23,329	23,466	23,508
FY2021/3	23,853	22,861	21,375	20,473	19,955	19,665	19,830	20,774	22,462	24,595	26,602	29,236	22,640
FY2022/3	32,713	33,169	34,653	37,504	38,297	37,959	36,389	36,603	36,505	38,060	39,698	40,821	36,864

配合飼料の価格動向(円/トン)/Mixed Feed Prices

出所：農畜産業振興機構(全て単純平均単価)/Source：Agriculture & Livestock Industries Corporation (all graphs based on average price(yen/t))

	Apr	May	Jun	Jul	Aug	Sep	Oct	Nov	Dec	Jan	Feb	Mar	Average
FY2020/3	61,917	61,999	61,981	61,635	61,652	61,670	60,356	60,394	60,373	61,065	61,046	61,075	61,264
FY2021/3	60,455	60,515	60,497	59,686	59,676	59,691	61,042	60,868	60,780	64,456	64,441	64,354	61,372
FY2022/3	69,549	69,655	69,591	74,279	74,220	74,248	73,165	73,144	73,026	75,801	75,748		72,948

○牛肉需給動向/Beef(P3)

出所：農畜産業振興機構

Notes: 1. Boneless cuts equivalent

Source: Agriculture & Livestock Industries Corporation

2. Figures for stocks are estimated by ALIC (t)

FY 2020/3	Apr	May	Jun	Jul	Aug	Sep	Oct	Nov	Dec	Jan	Feb	Mar	Total
供給量/Supplied Quantity	96,568	74,282	72,592	93,037	78,159	76,678	83,612	80,646	83,470	73,213	66,584	73,149	951,990
うち生産量/Production	29,292	25,719	25,308	30,506	24,602	26,144	28,234	33,361	30,355	25,803	24,758	25,572	329,654
うち輸入量/Imports	67,276	48,563	47,284	62,531	53,557	50,534	55,378	47,285	53,115	47,410	41,826	47,577	622,336
推定出回り量/Estimated Marketing Quantity	94,950	71,450	67,882	84,957	78,880	76,157	81,831	88,627	88,108	66,511	69,669	67,927	936,949
うち国産品/Domestic	28,264	26,094	24,244	30,997	23,942	25,768	26,022	33,275	27,789	27,716	24,553	24,871	323,535
うち輸入品/Imported	66,686	45,356	43,638	53,960	54,938	50,389	55,809	55,352	60,319	38,795	45,116	43,056	613,414
推定期末在庫/Estimated Ending Stock	117,194	119,759	124,128	131,898	130,761	130,894	132,306	123,915	118,780	125,264	121,874	126,843	-
うち国産品/Domestic	9,398	8,756	9,479	8,678	8,922	8,910	10,753	10,429	12,498	10,367	10,267	10,715	-
うち輸入品/Imported	107,796	111,003	114,649	123,220	121,839	121,984	121,553	113,486	106,282	114,897	111,607	116,128	-

FY 2021/3	Apr	May	Jun	Jul	Aug	Sep	Oct	Nov	Dec	Jan	Feb	Mar	Total
供給量/Supplied Quantity	96,131	75,282	78,533	83,298	72,895	71,371	80,385	83,158	80,534	68,883	61,732	74,343	926,545
うち生産量/Production	27,096	25,242	27,824	30,658	25,688	27,113	29,432	33,749	31,285	24,878	24,445	28,145	335,555
うち輸入量/Imports	69,035	50,040	50,709	52,640	47,207	44,258	50,953	49,409	49,249	44,005	37,287	46,198	590,990
推定出回り量/Estimated Marketing Quantity	80,730	69,265	78,404	86,249	74,013	77,371	82,644	88,135	83,050	66,677	62,587	81,223	930,348
うち国産品/Domestic	26,062	24,964	28,339	30,501	25,327	26,085	28,753	32,728	29,877	24,572	23,514	27,439	328,161
うち輸入品/Imported	54,668	44,301	50,065	55,748	48,686	51,286	53,891	55,407	53,173	42,105	39,073	53,784	602,187
推定期末在庫/Estimated Ending Stock	141,987	147,770	147,453	144,076	142,505	136,001	133,096	127,612	124,502	126,325	125,067	117,475	-
うち国産品/Domestic	11,492	11,536	10,575	10,306	10,214	10,738	10,771	11,285	12,099	12,022	12,550	12,544	-
うち輸入品/Imported	130,495	136,234	136,878	133,770	132,291	125,263	122,325	116,327	112,403	114,303	112,517	104,931	-

FY 2022/3	Apr	May	Jun	Jul	Aug	Sep	Oct	Nov	Dec	Jan	Feb	Mar	Total
供給量/Supplied Quantity	84,332	75,091	78,952	81,506	79,310	77,283	83,784	76,837	77,050	66,158	62,466	62,452	905,221
うち生産量/Production	29,036	25,458	26,733	29,501	25,549	26,717	28,581	34,186	31,355	25,761	24,696	28,541	336,114
うち輸入量/Imports	55,296	49,633	52,219	52,005	53,761	50,566	55,203	42,651	45,695	40,397	37,770	33,911	569,107
推定出回り量/Estimated Marketing Quantity	83,501	68,920	73,803	78,215	74,200	68,549	78,341	83,256	82,575	65,064	63,035	67,524	886,984
うち国産品/Domestic	28,098	24,842	25,734	28,482	24,732	25,371	27,617	33,832	31,068	25,598	23,374	28,853	327,601
うち輸入品/Imported	55,403	44,079	48,069	49,734	49,469	43,178	50,723	49,424	51,507	39,466	39,661	38,670	559,383
推定期末在庫/Estimated Ending Stock	117,622	123,233	127,791	130,389	134,775	142,769	147,567	140,348	133,882	134,515	133,485	127,825	-
うち国産品/Domestic	12,798	12,855	13,263	13,590	13,684	14,290	14,608	14,162	13,508	13,210	14,071	13,170	-
うち輸入品/Imported	104,824	110,378	114,528	116,799	121,091	128,479	132,959	126,186	120,374	121,305	119,414	114,655	-

○豚肉需給動向/Pork(P5)

出所：農畜産業振興機構

Notes:1.Boneless cuts equivalent

Source: Agriculture & Livestock Industries Corporation

2.Figures for stocks are estimated by ALIC (t)

FY 2020/3	Apr	May	Jun	Jul	Aug	Sep	Oct	Nov	Dec	Jan	Feb	Mar	Total
供給量/Supplied Quantity	176,023	159,650	143,295	160,214	152,727	146,955	163,052	160,249	153,148	153,144	140,412	147,163	1,856,032
うち生産量/Production	77,788	75,254	67,049	74,899	67,745	68,830	79,112	77,534	80,884	80,864	73,425	79,535	902,919
うち輸入量/Imports	98,235	84,396	76,246	85,315	84,982	78,125	83,940	82,715	72,264	72,280	66,987	67,628	953,113
推定出回り量/Estimated Marketing Quantity	152,687	142,740	142,547	153,084	146,276	149,435	162,201	166,197	163,753	146,161	141,397	145,073	1,811,551
うち国産品/Domestic	76,406	76,085	65,290	76,348	68,891	69,036	79,247	75,817	81,783	80,150	71,714	77,478	898,245
うち輸入品/Imported	76,281	66,655	77,257	76,736	77,385	80,399	82,954	90,380	81,970	66,011	69,683	67,595	913,306
推定期末在庫/Estimated Ending Stock	189,766	206,606	207,284	214,359	220,743	218,205	218,968	212,979	202,275	209,212	208,119	210,137	-
うち国産品/Domestic	22,544	21,643	23,332	21,828	20,615	20,351	20,128	21,804	20,806	21,474	23,077	25,062	-
うち輸入品/Imported	167,222	184,963	183,952	192,531	200,128	197,854	198,840	191,175	181,469	187,738	185,042	185,075	-

FY 2021/3	Apr	May	Jun	Jul	Aug	Sep	Oct	Nov	Dec	Jan	Feb	Mar	Total
供給量/Supplied Quantity	181,807	151,182	152,057	148,978	136,610	137,291	152,571	149,904	154,029	145,420	137,857	152,933	1,800,639
うち生産量/Production	80,239	71,318	72,535	73,967	68,179	71,875	80,156	79,407	82,555	78,800	73,648	83,976	916,655
うち輸入量/Imports	101,568	79,864	79,522	75,011	68,431	65,416	72,415	70,497	71,474	66,620	64,209	68,957	883,984
推定出回り量/Estimated Marketing Quantity	167,907	139,324	152,572	158,510	141,115	144,946	161,334	158,952	160,519	151,043	136,010	155,103	1,827,335
うち国産品/Domestic	82,085	73,523	70,031	75,708	69,117	72,409	80,388	79,178	81,364	76,657	73,069	82,627	916,156
うち輸入品/Imported	85,822	65,801	82,541	82,802	71,998	72,537	80,946	79,774	79,155	74,386	62,941	72,476	911,179
推定期末在庫/Estimated Ending Stock	223,945	235,742	235,073	225,452	220,847	213,071	204,188	194,989	188,311	182,564	184,274	181,984	-
うち国産品/Domestic	23,124	20,858	23,208	21,378	20,340	19,685	19,333	19,411	20,414	22,433	22,875	24,104	-
うち輸入品/Imported	200,821	214,884	211,865	204,074	200,507	193,386	184,855	175,578	167,897	160,131	161,399	157,880	-

FY 2022/3	Apr	May	Jun	Jul	Aug	Sep	Oct	Nov	Dec	Jan	Feb	Mar	Total
供給量/Supplied Quantity	178,773	144,066	149,199	146,026	149,408	149,393	154,848	160,766	156,609	162,079	145,516	154,977	1,851,660
うち生産量/Production	80,131	72,872	73,971	71,419	71,268	75,182	76,972	82,305	82,143	79,561	73,703	83,139	922,666
うち輸入量/Imports	98,642	71,194	75,228	74,607	78,140	74,211	77,876	78,461	74,466	82,518	71,813	71,838	928,994
推定出回り量/Estimated Marketing Quantity	176,016	143,136	146,806	149,081	145,399	150,310	159,236	167,066	164,218	153,283	143,488	153,969	1,852,008
うち国産品/Domestic	78,537	72,522	74,393	72,678	72,189	76,016	77,317	81,908	80,677	79,136	73,664	82,191	921,228
うち輸入品/Imported	97,479	70,614	72,412	76,403	73,210	74,293	81,919	85,158	83,541	74,148	69,824	71,779	930,780
推定期末在庫/Estimated Ending Stock	184,636	185,475	187,729	184,569	188,461	187,419	182,807	176,355	168,588	177,272	179,196	180,095	-
うち国産品/Domestic	25,593	25,852	25,290	23,926	22,888	21,928	21,359	21,604	22,912	23,226	23,161	24,001	-
うち輸入品/Imported	159,043	159,623	162,439	160,643	165,573	165,491	161,448	154,751	145,676	154,046	156,035	156,094	-

○鶏肉需給動向(P7)

出所：農畜産業振興機構

Notes:1.Bone in cuts equivalent

注：数量は骨付き肉ベース。成鶏肉を含む。輸入量には鶏肉以外の家禽肉を含まない。

2.Figures for stocks are estimated by ALIC

Source: Agriculture & Livestock Industries Corporation

3.The production quantity and the estimate (t)

FY 2020/3	Apr	May	Jun	Jul	Aug	Sep	Oct	Nov	Dec	Jan	Feb	Mar	Total
供給量/Supplied Quantity	184,452	184,545	177,407	188,797	179,770	181,521	194,242	190,903	196,395	177,808	179,403	183,648	2,218,892
うち生産量/Production	137,186	137,972	134,042	135,585	129,253	127,912	142,651	142,075	151,473	136,188	135,484	136,953	1,646,774
うち輸入量/Imports	47,266	46,573	43,365	53,212	50,517	53,609	51,591	48,828	44,922	41,620	43,919	46,695	572,118
推定出回り量/Estimated Marketing Quantity	183,618	184,930	176,590	185,782	179,421	174,134	191,414	191,885	200,780	173,508	177,800	180,911	2,200,774
うち国産品/Domestic	134,093	138,030	134,152	137,117	129,562	126,770	143,230	142,799	151,874	135,041	135,025	135,612	1,643,305
うち輸入品/Imported	49,525	46,900	42,438	48,665	49,859	47,364	48,184	49,086	48,906	38,467	42,775	45,299	557,469
推定期末在庫/Estimated Ending Stock	153,163	152,778	153,595	156,610	156,959	164,346	167,174	166,192	161,807	166,107	167,710	170,447	-
うち国産品/Domestic	30,745	30,687	30,577	29,045	28,736	29,878	29,299	28,575	28,174	29,321	29,780	31,121	-
うち輸入品/Imported	122,418	122,091	123,018	127,565	128,223	134,468	137,875	137,617	133,633	136,786	137,930	139,326	-

FY 2021/3	Apr	May	Jun	Jul	Aug	Sep	Oct	Nov	Dec	Jan	Feb	Mar	Total
供給量/Supplied Quantity	186,771	171,156	187,957	188,681	167,238	172,325	193,526	184,573	194,936	181,219	176,648	196,426	2,201,457
うち生産量/Production	140,065	135,037	137,304	137,103	126,925	130,849	145,631	139,264	152,225	132,289	131,134	140,799	1,648,625
うち輸入量/Imports	46,706	36,119	50,653	51,578	40,313	41,476	47,895	45,309	42,711	48,930	45,514	55,627	552,832
推定出回り量/Estimated Marketing Quantity	185,516	173,490	186,539	189,318	170,255	173,243	198,793	187,820	201,545	176,279	175,471	189,832	2,208,102
うち国産品/Domestic	143,984	141,134	139,857	126,133	128,468	131,052	146,601	139,644	151,812	132,616	130,132	139,533	1,650,966
うち輸入品/Imported	41,532	32,356	46,682	63,185	41,787	42,191	52,192	48,176	49,733	43,663	45,339	50,299	557,136
推定期末在庫/Estimated Ending Stock	171,702	169,368	170,786	170,149	167,132	166,214	160,947	157,700	151,091	156,031	157,208	163,802	-
うち国産品/Domestic	27,202	21,105	18,552	29,522	27,979	27,776	26,806	26,426	26,839	26,512	27,514	28,780	-
うち輸入品/Imported	144,500	148,263	152,234	140,627	139,153	138,438	134,141	131,274	124,252	129,519	129,694	135,022	-

FY 2022/3	Apr	May	Jun	Jul	Aug	Sep	Oct	Nov	Dec	Jan	Feb	Mar	Total
供給量/Supplied Quantity	191,394	185,055	181,906	183,094	179,022	183,015	198,030	205,802	217,595	190,949	63,107	188,613	2,279,572
うち生産量/Production	139,841	137,646	138,019	137,138	130,939	136,605	145,516	146,726	156,924	137,166	135,353	143,478	1,685,351
うち輸入量/Imports	50,157	46,229	42,812	44,750	46,934	45,194	51,212	57,772	60,671	53,783	49,572	45,135	594,221
推定出回り量/Estimated Marketing Quantity	193,784	184,300	188,225	190,672	180,986	187,964	196,510	200,452	215,921	182,547	180,055	194,133	2,285,721
うち国産品/Domestic	136,965	136,543	136,659	136,718	130,612	137,698	144,620	147,839	154,999	137,555	136,544	144,886	1,681,638
うち輸入品/Imported	55,423	46,577	50,491	52,748	49,225	49,050	50,588	51,309	60,922	44,992	43,511	49,247	604,083
推定期末在庫/Estimated Ending Stock	161,412	162,167	155,848	148,270	146,306	141,357	142,877	148,227	149,901	158,303	163,173	157,653	-
うち国産品/Domestic	31,656	32,759	34,119	34,539	34,866	33,773	34,669	33,556	35,481	35,092	33,901	32,493	-
うち輸入品/Imported	129,756	129,408	121,729	113,731	111,440	107,584	108,208	114,671	114,420	123,211	129,272	125,160	-

○ハムソーセージ需給動向/Hams and Sausages (P15)

FY 2020/3

(t)

	Apr	May	Jun	Jul	Aug	Sep	Oct	Nov	Dec	Jan	Feb	Mar	Total
国内生産量/Production	49,558	45,393	45,920	48,773	46,197	44,899	47,831	49,466	50,268	38,811	41,439	46,669	555,224
輸入量/Imports	4,333	3,590	3,443	3,505	4,308	4,641	3,889	4,297	4,287	3,681	2,936	3,491	46,401
合計/Supplied Quantity	53,891	48,983	49,363	52,278	50,505	49,540	51,720	53,763	54,555	42,492	44,375	50,160	601,625

FY 2021/3

(t)

	Apr	May	Jun	Jul	Aug	Sep	Oct	Nov	Dec	Jan	Feb	Mar	Total
国内生産量/Production	50,025	45,342	47,604	47,990	44,362	43,251	46,711	46,991	50,629	38,661	39,536	46,069	547,171
輸入量/Imports	4,610	3,049	3,247	3,004	2,529	2,751	2,757	2,678	2,663	1,849	2,308	2,501	33,946
合計/Supplied Quantity	54,635	48,391	50,851	50,994	46,891	46,002	49,468	49,669	53,292	40,484	41,844	48,570	581,117

FY 2022/3

(t)

	Apr	May	Jun	Jul	Aug	Sep	Oct	Nov	Dec	Jan	Feb	Mar	Total
国内生産量/Production	49,465	44,238	45,733	47,941	44,057	43,883	43,942	49,557	50,791	38,269	40,750	44,348	542,974
輸入量/Imports	3,648	2,529	2,797	2,778	3,315	2,850	2,560	3,077	3,316	2,532	2,437	2,661	34,500
合計/Supplied Quantity	53,113	46,767	48,531	50,719	47,530	46,733	46,503	52,634	54,107	40,801	43,187	47,009	577,474

○乳製品相場/Dairy Products (P8)

脱脂粉乳(CIF、その他、円/kg)/Skim milk(CIF、Others purchase price)

出所：農畜産業振興機構(全て単純平均金単価)/Source：Agriculture & Livestock Industries Corporation (all graphs based on average price) (yen/kg)

	Apr	May	Jun	Jul	Aug	Sep	Oct	Nov	Dec	Jan	Feb	Mar	Average
FY 2020/3	275	306	287	302	336	275	346	274					300
FY 2021/3				359	288	422	284	279	309	287	271	314	313
FY 2022/3	350	327	289	475	371	413	590	325	393	538	486	435	416

ナチュラルチーズ(CIF、円/kg)/Natural cheese(CIF)

出所：農畜産業振興機構(全て単純平均金単価)/Source：Agriculture & Livestock Industries Corporation (all graphs based on average price) (yen/kg)

	Apr	May	Jun	Jul	Aug	Sep	Oct	Nov	Dec	Jan	Feb	Mar	Average
FY 2020/3	469	475	474	460	453	460	462	478	479	471	476	479	470
FY 2021/3	458	452	475	463	464	465	452	449	455	447	460	482	460
FY 2022/3	472	477	485	482	485	498	484	521	522	535	526	551	503

○「家計調査」購入数量/Family Income and Expenditure Survey:Quantity Purchase (P9,15)

出所:総務省「家計調査」

Source:Ministry of Internal Affairs and Communications "Family Income and Expenditure Survey"

Two-or-more-person Households(Not including agricultural,forestry and fisheries households) (g)

2020	Jan	Feb	Mar	Apr	May	Jun	Jul	Aug	Sep	Oct	Nov	Dec
ハム・ソーセージ・ベーコン購入数量/Hams and Sausages, and Bacons	680	734	851	890	908	845	886	857	836	807	863	1,037
牛肉購入数量/Beef	505	522	600	655	719	564	569	613	528	577	563	784
豚肉購入数量/Pork	1,737	1,810	2,044	2,058	2,024	1,881	1,845	1,827	1,769	1,915	1,920	2,143
鶏肉購入数量/Chicken	1,358	1,402	1,617	1,805	1,716	1,599	1,530	1,473	1,401	1,538	1,498	1,839

2021	Jan	Feb	Mar	Apr	May	Jun	Jul	Aug	Sep	Oct	Nov	Dec
ハム・ソーセージ・ベーコン購入数量/Hams and Sausages, and Bacons	751	734	791	813	878	843	865	839	781	813	853	981
牛肉購入数量/Beef	581	525	547	553	597	551	570	603	504	504	491	722
豚肉購入数量/Pork	1,989	1,800	1,894	1,859	1,923	1,810	1,782	1,896	1,889	1,955	1,841	1,921
鶏肉購入数量/Chicken	1,582	1,428	1,528	1,556	1,527	1,461	1,440	1,449	1,546	1,559	1,536	1,695

2022	Jan	Feb	Mar	Apr	May	Jun	Jul	Aug	Sep	Oct	Nov	Dec
ハム・ソーセージ・ベーコン購入数量/Hams and Sausages, and Bacons	747	698	763									
牛肉購入数量/Beef	544	459	532									
豚肉購入数量/Pork	1,923	1,848	1,930									
鶏肉購入数量/Chicken	1,563	1,483	1,550									

○「家計調査」支出金額/Family Income and Expenditure Survey:Expenditure (P9,15)

出所:総務省「家計調査」

(yen)

2020	Jan	Feb	Mar	Apr	May	Jun	Jul	Aug	Sep	Oct	Nov	Dec
ハム・ソーセージ・ベーコン支出金額/Hams and Sausages, and Bacons	1,056	1,106	1,283	1,345	1,405	1,337	1,401	1,353	1,259	1,266	1,390	1,748
牛肉 支出金額//Beef	1,704	1,664	1,848	1,976	2,268	1,811	1,797	2,113	1,801	1,771	1,836	3,088
豚肉 支出金額/Pork	2,469	2,545	2,820	2,907	2,942	2,678	2,671	2,710	2,605	2,751	2,746	3,017
鶏肉 支出金額/Chicken	1,309	1,310	1,451	1,574	1,578	1,408	1,364	1,348	1,327	1,424	1,425	1,763

2021	Jan	Feb	Mar	Apr	May	Jun	Jul	Aug	Sep	Oct	Nov	Dec
ハム・ソーセージ・ベーコン支出金額/Hams and Sausages, and Bacons	1,144	1,126	1,229	1,248	1,314	1,318	1,345	1,322	1,189	1,220	1,320	1,617
牛肉 支出金額//Beef	1,920	1,670	1,845	1,759	2,096	1,765	1,813	2,113	1,811	1,760	1,675	2,983
豚肉 支出金額/Pork	2,817	2,594	2,641	2,594	2,701	2,506	2,527	2,705	2,639	2,690	2,670	2,808
鶏肉 支出金額/Chicken	1,469	1,359	1,406	1,384	1,426	1,328	1,265	1,341	1,383	1,424	1,429	1,702

2022	Jan	Feb	Mar	Apr	May	Jun	Jul	Aug	Sep	Oct	Nov	Dec
ハム・ソーセージ・ベーコン支出金額/Hams and Sausages, and Bacons	1,120	1,089	1,166									
牛肉 支出金額//Beef	1,781	1,571	1,739									
豚肉 支出金額/Pork	2,755	2,640	2,672									
鶏肉 支出金額/Chicken	1,450	1,404	1,439									

〒141-6013 東京都品川区大崎2-1-1
ThinkPark Tower
日本ハム株式会社 広報IR部
電話:03-4555-8024

Public & Investor Relations Department
NH Foods Ltd.
ThinkPark Tower
2-1-1 Osaki, Shinagawa-ku, Tokyo 141-6013
Tel: +81-3-4555-8024