

2022年9月度 市場動向資料集

September 2022 Market Trends

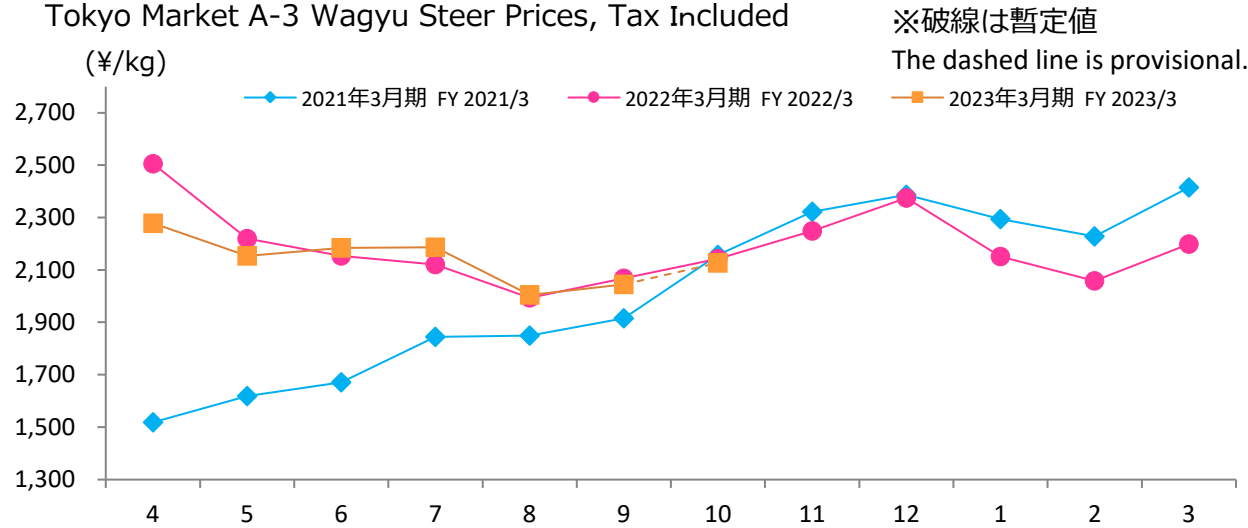
日本八ム株式会社
NH Foods Ltd.
October 25, 2022



目次 / Index

- 牛肉市況 / Beef Market Trends P.3-6
- 豚肉市況 / Pork Market Trends P.7-9
- 鶏肉市況 / Chicken Market Trends P.10-11
- 乳製品原料相場価格 / Market Price for Raw Material of Dairy Products P.12
- 飼料相場 / Market Trends in Grain Feed Prices P.13
- 家計調査 / Family Income and Expenditure Survey by Types of Meat P.14
- ハム・ソーセージ需給量推移 / Supply and Demand Trends in Hams and Sausages P.15
- 参照データ P.16-23

【去勢和牛 A-3卸売価格（東京市場、税込）】
Tokyo Market A-3 Wagyu Steer Prices, Tax Included



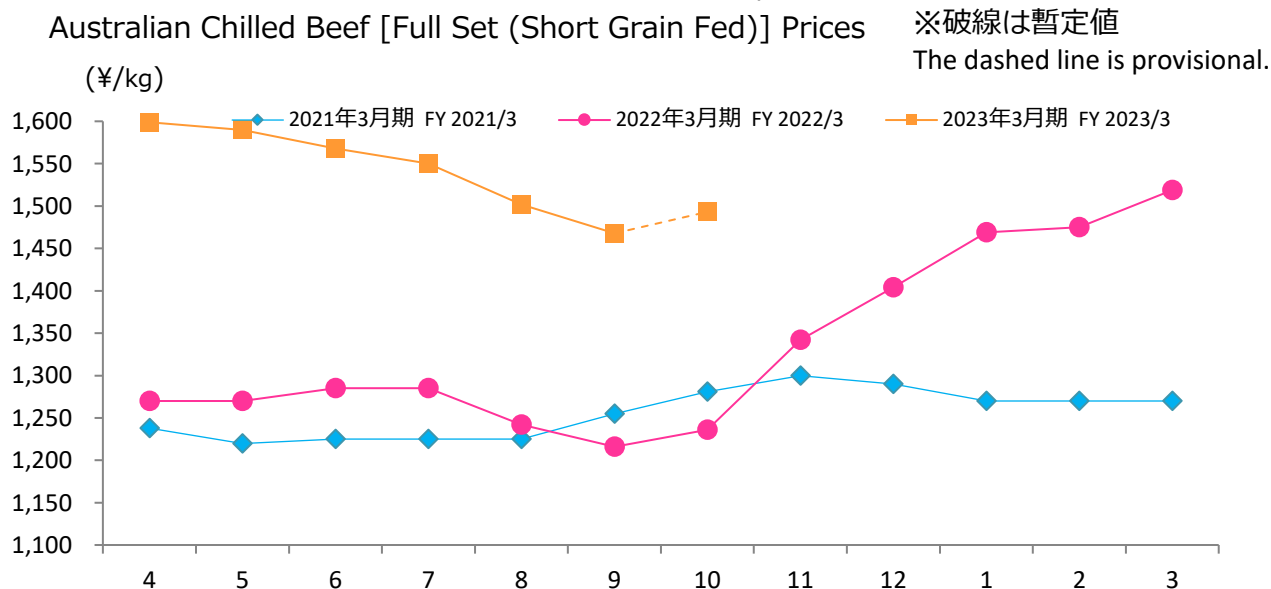
A-3 : 格付けランク、歩留まり等級A~C / 肉質等級1~5
Yield Grade A-C / Meat Quality Grade 1-5

前期差 Comparison with the previous year	前月差 Comparison with The previous month
-23	41

(¥/kg)

グラフ資料出所：東京食肉市場株式会社
Date Source: Tokyo Meat Market Co. Ltd

【豪州産チルドビーフ ショートグレインフルセット価格】
Australian Chilled Beef [Full Set (Short Grain Fed)] Prices



ショートグレイン: 穀物肥育期間 100日以上
Short Grain Fed: Grain Fed period 100 days or more
フルセット: セット販売(基本12部位) ⇔ パーツ販売
Full Set: Set Price of primal 12 items ⇔ Single item Sales

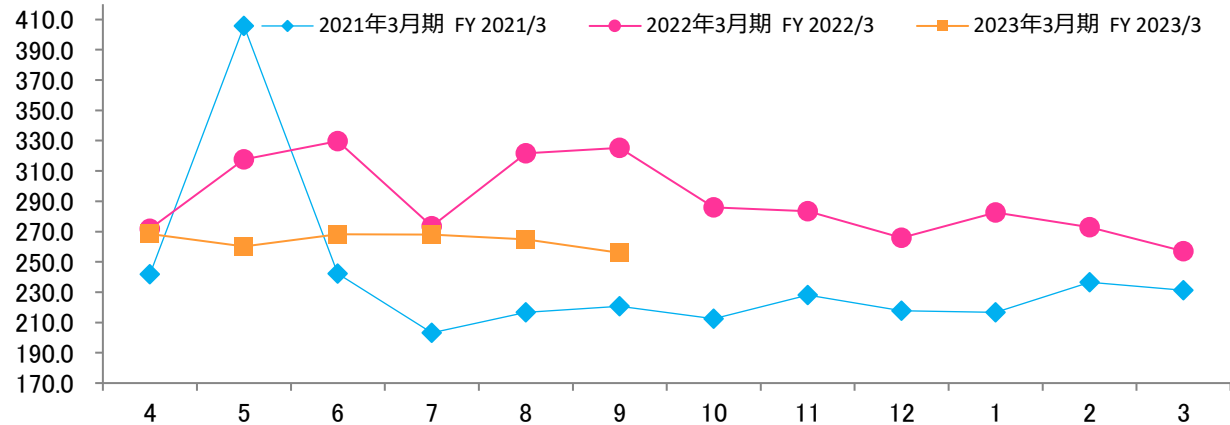
前期差 Comparison with the previous year	前月差 Comparison with The previous month
252	-34

(¥/kg)

グラフ資料出所：食品産業新聞社畜産日報掲載分から単純平均単価
Date Source: "DAILY MEAT & LIVESTOCK" which is a trade business paper published in Japan (all graphs based on average prices)

【米国産 牛肉カットアウトバリュー 枝肉ベース】 U.S. Beef Boxed cutout, Choice 1-3, 600-900 lbs

(ドル/100ポンド)
(US \$/cwt)



カットアウトバリュー: 各部分肉の卸売価格を1頭分の枝肉に再構成した卸売指標価格
Cutout Value: The gross value of a beef carcass based on prices paid for individual beef items derived from the carcass

(ドル/100ポンド)
(US \$/cwt)

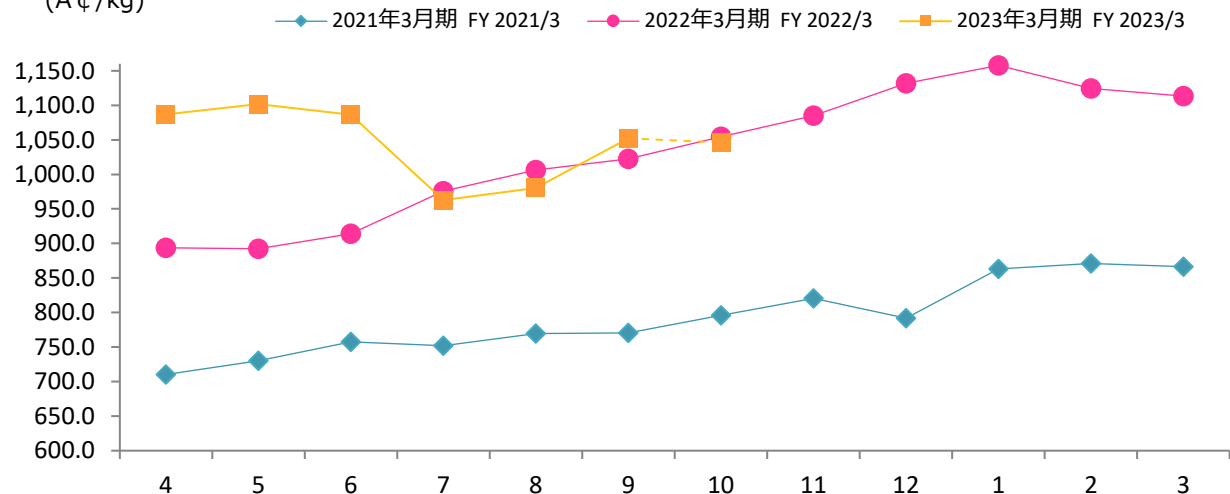
前期差 Comparison with the previous year	前月差 Comparison with The previous month
-69.2	-8.9

グラフ資料出所: 米国食肉輸出連合会
Source: U.S. Meat Export Federation

【豪州産 若齢牛価格(生産者販売価格)】 Eastern Young Cattle Indicator (EYCI)

(豪セント/kg)
(A ¢/kg)

※破線は暫定値
The dashed line is provisional.



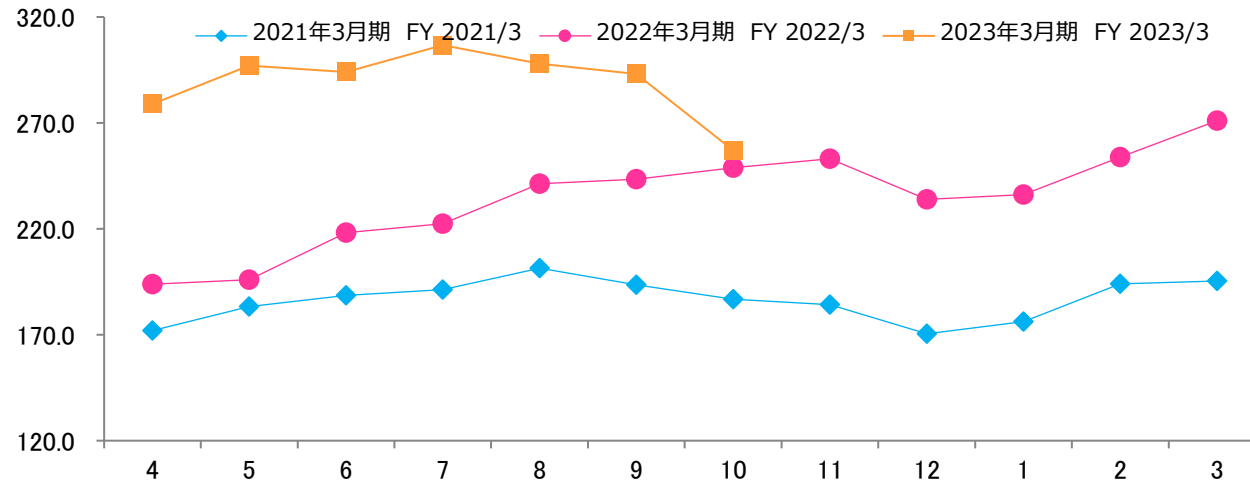
若齢牛価格: 豪州東部3州の主要家畜市場の若齢牛の加重平均取引価格
EYCI: Weighted average price of young cattle in the major livestock market in the three eastern Australia states

(豪セント/kg)
(A ¢/kg)

前期差 Comparison with the previous year	前月差 Comparison with The previous month
29.7	72.0

グラフ資料出所: 農畜産業振興機構(全て単純平均単価)
Source: Agriculture & Livestock Industries Corporation (all graphs based on average prices)

【ウルグアイ 牛価格 生体ベース】
Uruguay cattle prices, > 380kg
(ドル/100kg)
(US \$/lwt)



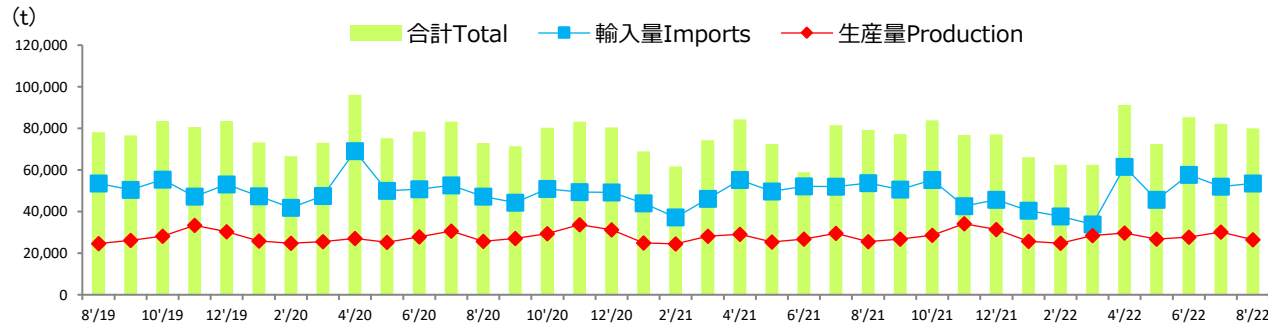
(ドル/100kg) (US \$/lwt)	
前期差 Comparison with the previous year	前月差 Comparison with The previous month
8.2	-36.1

グラフ資料出所: 豪州食肉家畜生産者事業団 & ウルグアイINAC
Source: Meat & Livestock Australia Ltd & Uruguay Instituto Nacional de Carnes

グラフ資料出所：農畜産業振興機構
Source: Agriculture & Livestock Industries Corporation

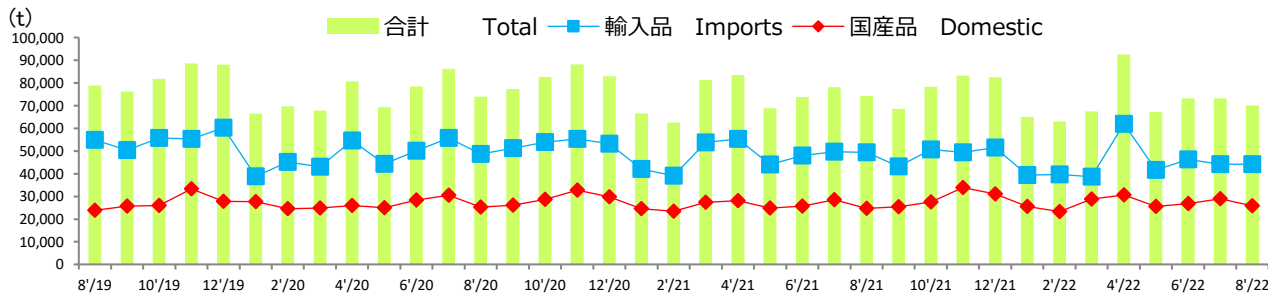
注：数量は部分肉ベース。輸入量は煮沸肉並びにくず肉のうちほほ肉及び頭肉のみ含む。
Notes: 1. Boneless cuts equivalent
2. Figures for stocks are estimated by ALIC

【生産量と輸入量】 Production and Imports



	前期差 Comparison with The previous year	前月差 Comparison with The previous month
輸入量 Imports	-255	1,507
生産量 Production	990	-3,547

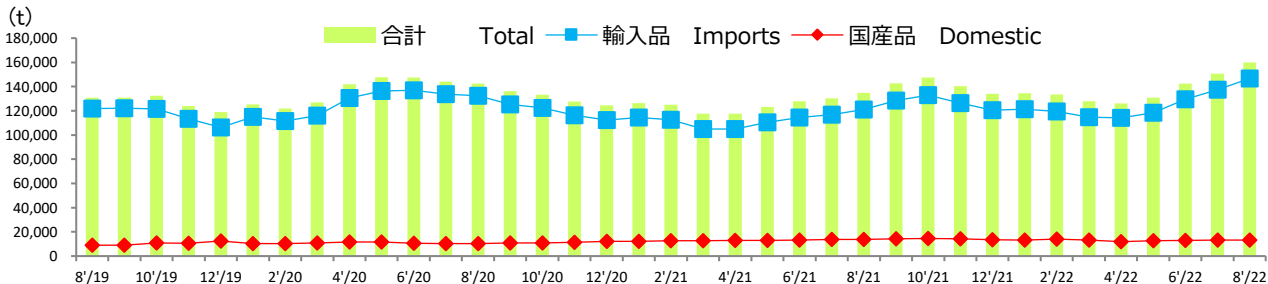
【推定出回り量】 Estimated Marketing Quantity



推定出回り量：推定期首在庫+生産量+輸入量-輸出量-推定期末在庫
Estimated marketing quantity: Estimated beginning stock stock +Production+Imports-Exports-Estimated ending stock

	前期差 Comparison with The previous year	前月差 Comparison with The previous month
輸入品 Imports	-5,256	-39
国産品 Domestic	1,157	-3,117

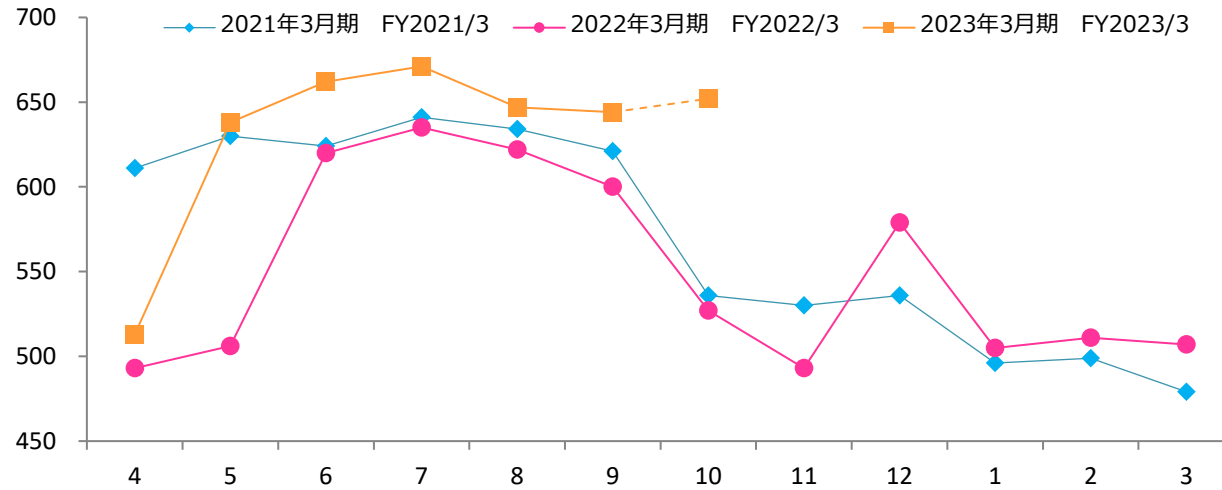
【推定期末在庫】 Estimated Ending Stock



	前期差 Comparison with The previous year	前月差 Comparison with The previous month
輸入品 Imports	25,549	9,293
国産品 Domestic	-441	-9

【豚肉枝肉卸売価格 上物 東京食肉市場平均価格 税込】
Pork Carcass Prices (Tokyo Market Excellent Grade, monthly average, Tax Included)
(¥/kg)

※破線は暫定値
The dashed line is provisional.



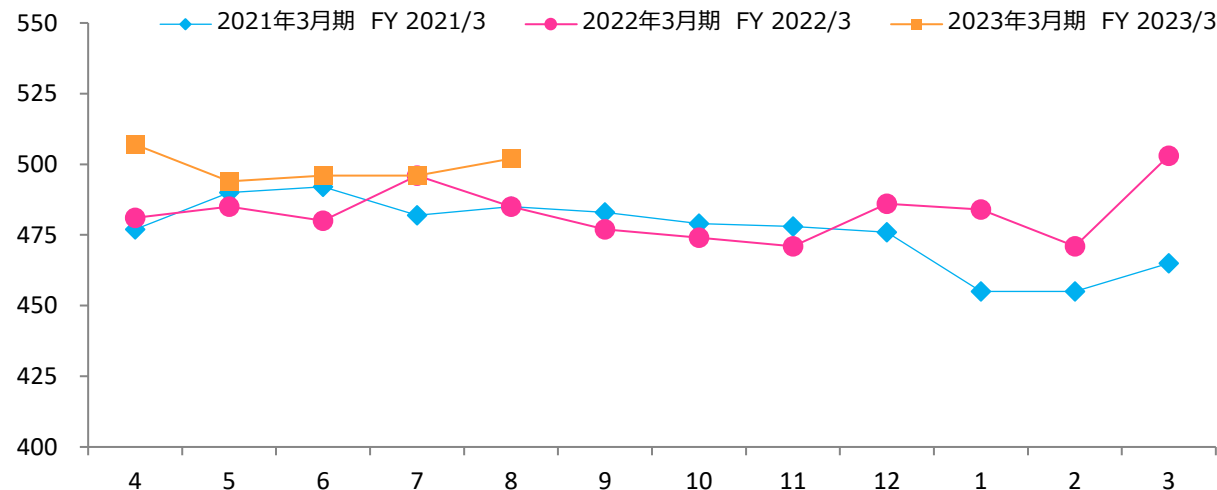
上物：等級(極上、上、中、並、等外)

(¥/kg)

前期差 Comparison with the previous year	前月差 Comparison with The previous month
44	-3

グラフ資料出所：東京食肉市場株式会社
Date Source: Tokyo Meat Market Co. Ltd

【U.S.冷凍ウデ (英名：ピクニック) 価格】
U.S. Frozen Pork (Picnic) Prices
(¥/kg)



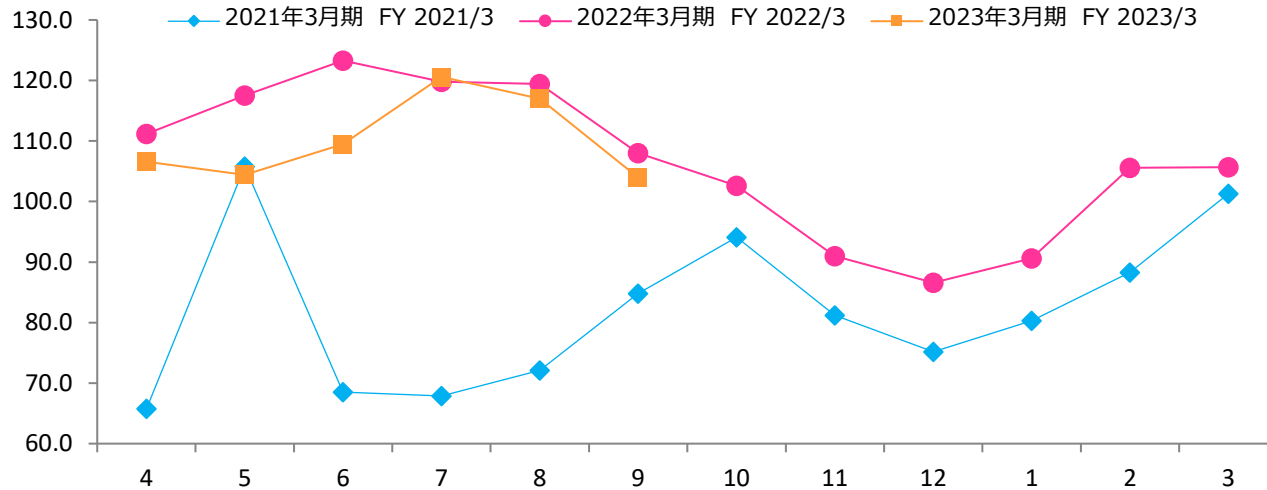
ウデ：加工豚肉原料
Picnic: Mainly used for processed pork

(¥/kg)

前期差 Comparison with the previous year	前月差 Comparison with The previous month
17	6

グラフ資料出所：農畜産業振興機構 (全て単純平均単価)
Date Source: Agriculture & Livestock Industries Corporation
(all graphs based on average prices)

【米国産 豚肉カットアウトバリュー 枝肉ベース】
 U.S. Pork Cutout composite carcass, 53-54% lean
 (ドル/100ポンド)
 (US \$/cwt)

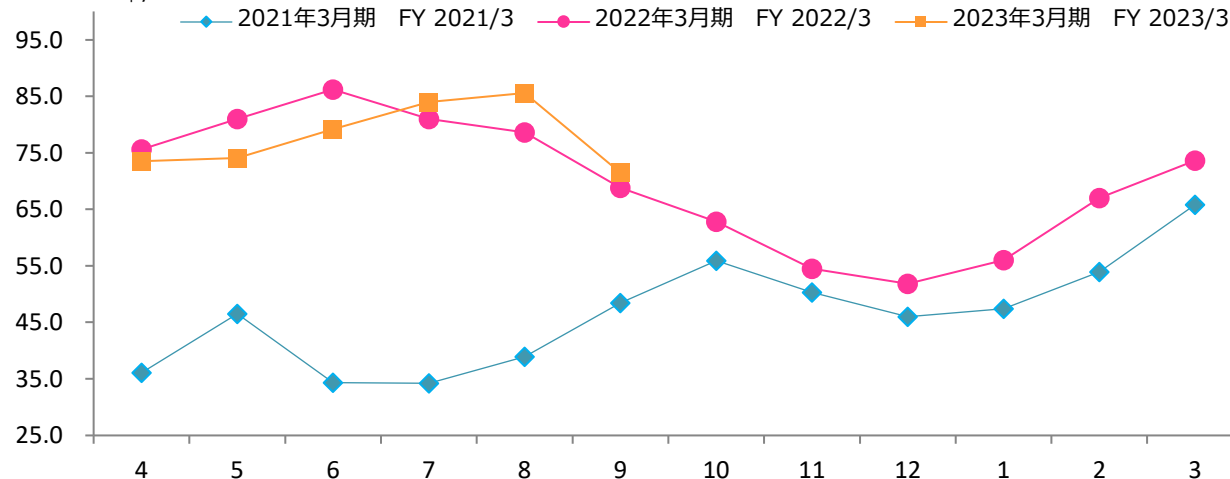


(ドル/100ポンド)
(US \$/cwt)

前期差 Comparison with the previous year	前月差 Comparison with The previous month
-4.0	-13.0

グラフ資料出所：米国食肉輸出連合会
 Source: U.S. Meat Export Federation

【米国産 肥育豚価格(生産者販売価格)】
 Live U.S. Fattening Pig Prices (Pig Sales Price)
 (セント/ポンド)
 (US ¢/lb)



(セント/ポンド)
(US ¢/lb)

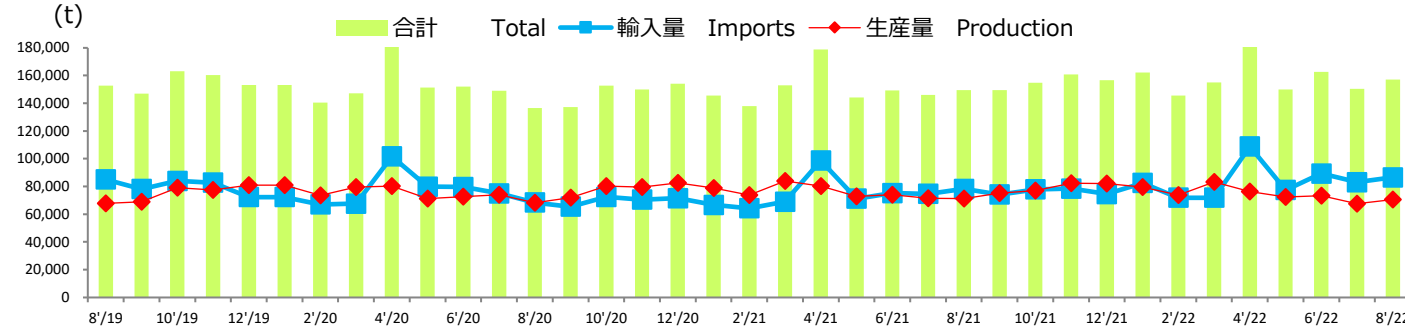
前期差 Comparison with the previous year	前月差 Comparison with The previous month
2.7	-14.1

グラフ資料出所：農畜産業振興機構 (全て単純平均単価)
 Source: Agriculture & Livestock Industries Corporation (all graphs based on average prices)

グラフ資料出所：農畜産業振興機構
Source: Agriculture & Livestock Industries Corporation

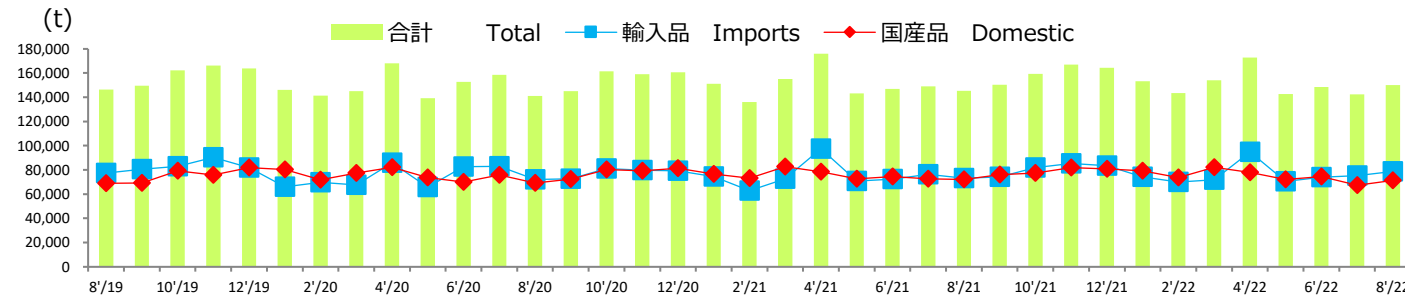
注：数量は部分肉ベース。輸入量は煮沸肉並びにくず肉のうちほほ肉及び頭肉のみ含む。
Notes: 1. Boneless cuts equivalent
2. Figures for stocks are estimated by ALIC

【生産量と輸入量】
Production and Imports



	前期差 Comparison with The previous year	前月差 Comparison with The previous month
輸入量 Imports	8,352	3,479
生産量 Production	-689	3,131

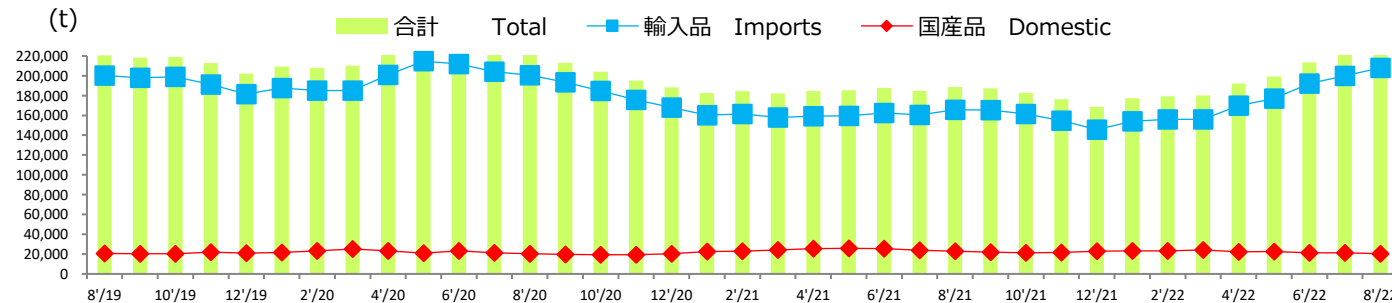
【推定出回り量】
Estimated Marketing Quantity



推定出回り量：推定期首在庫+生産量+輸入量-輸出量-推定期末在庫
Estimated marketing quantity: Estimated beginning stock stock +Production+Imports-Exports-Estimated ending stock

	前期差 Comparison with The previous year	前月差 Comparison with The previous month
輸入品 Imports	5,367	3,338
国産品 Domestic	-811	4,143

【推定期末在庫】
Estimated Ending Stock

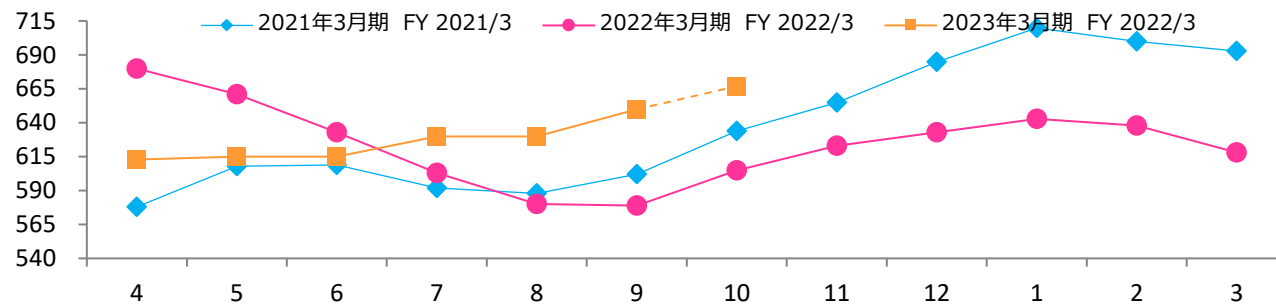


	前期差 Comparison with The previous year	前月差 Comparison with The previous month
輸入品 Imports	42,393	7,915
国産品 Domestic	-2,523	-884

【鶏肉卸売価格（もも肉、税抜）】

Domestic Chicken Thigh Meat Wholesale Prices (¥/kg)

※破線は暫定値
The dashed line is provisional.



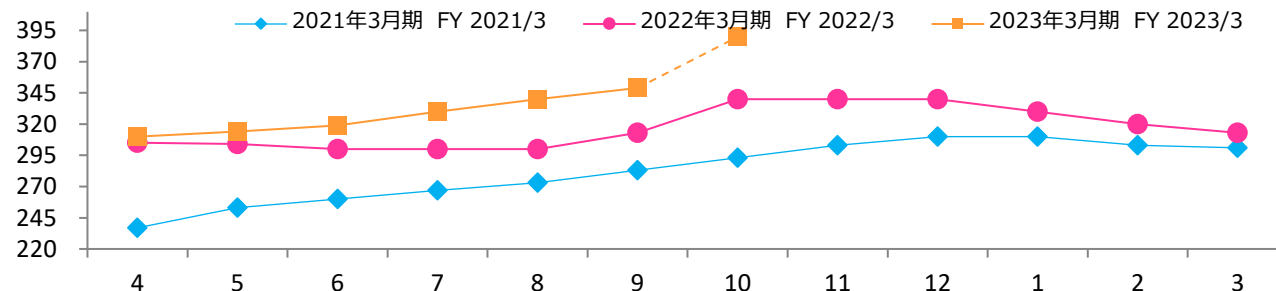
グラフ資料出所：食品産業新聞社畜産日報掲載分から単純平均単価
Date Source: "DAILY MEAT & LIVESTOCK"
which is a trade business paper published in Japan(all graphs based on Average Price)

(¥/kg)

前期差 Comparison with the previous year	前月差 Comparison with The previous month
71	20

【鶏肉卸売価格（むね肉、税抜）】

Domestic Chicken Breast Meat Wholesale Prices (¥/kg)

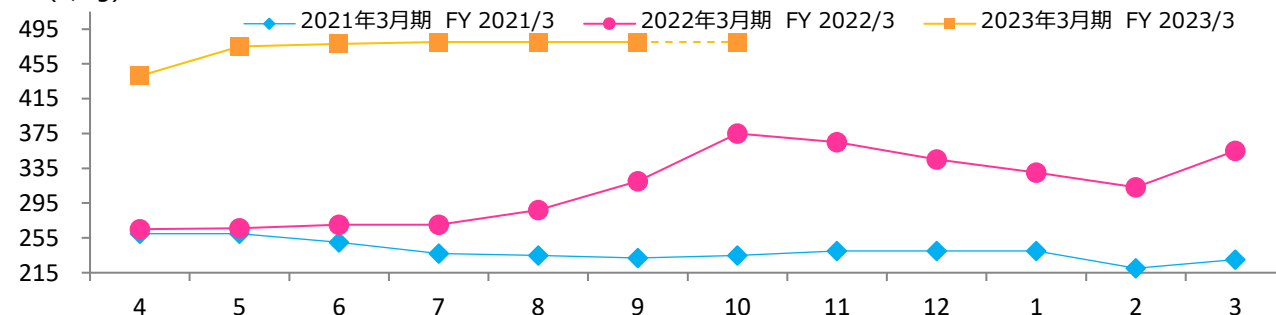


(¥/kg)

前期差 Comparison with the previous year	前月差 Comparison with The previous month
36	9

【ブラジル産もも肉価格】

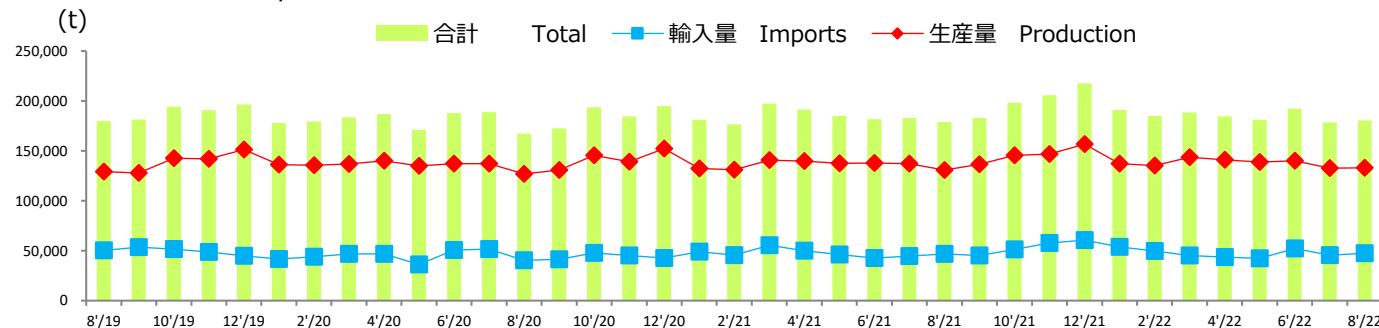
Brazilian Chicken Thigh Prices (¥/kg)



(¥/kg)

前期差 Comparison with the previous year	前月差 Comparison with The previous month
160	0

【生産量と輸入量】
Production and Imports



グラフ資料出所: 農畜産業振興機構

Source: Agriculture & Livestock Industries Corporation

注: 生産量は骨付き肉ベース。成鶏肉を含む。輸入量には鶏肉以外の家禽肉を含まない。

注: 生産量、国産品の推定出回り量は2010年2月をもって公表終了。

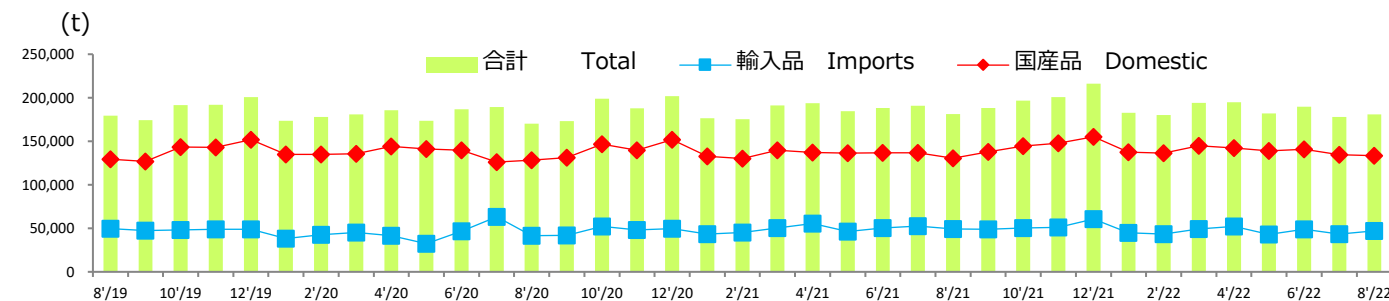
Notes: 1. *Bone in cuts equivalent

2. Figures for stocks are estimated by ALIC

3. *The production quantity and the estimated marketing quantity on the domestic one are made public only until February,2010.

	前期差 Comparison with The previous year	前月差 Comparison with The previous month
輸入量 Imports	440	1,754
生産量 Production	2,058	139

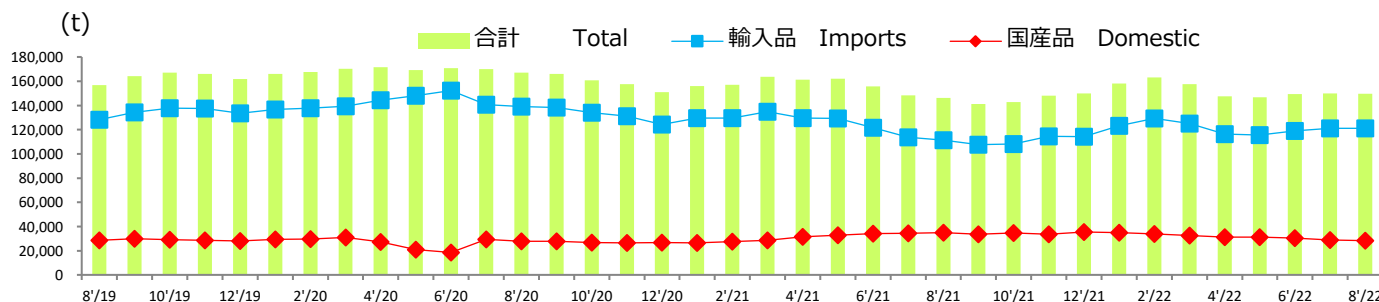
【推定出回り量】
Estimated Marketing Quantity



推定出回り量: 推定期首在庫+生産量+輸入量-輸出量-推定期末在庫
Estimated marketing quantity: Estimated beginning stock stock +Production+Imports-Exports-Estimated ending stock

	前期差 Comparison with The previous year	前月差 Comparison with The previous month
輸入品 Imports	-1,936	3,744
国産品 Domestic	2,767	-1,111

【推定期末在庫】
Estimated Ending Stock

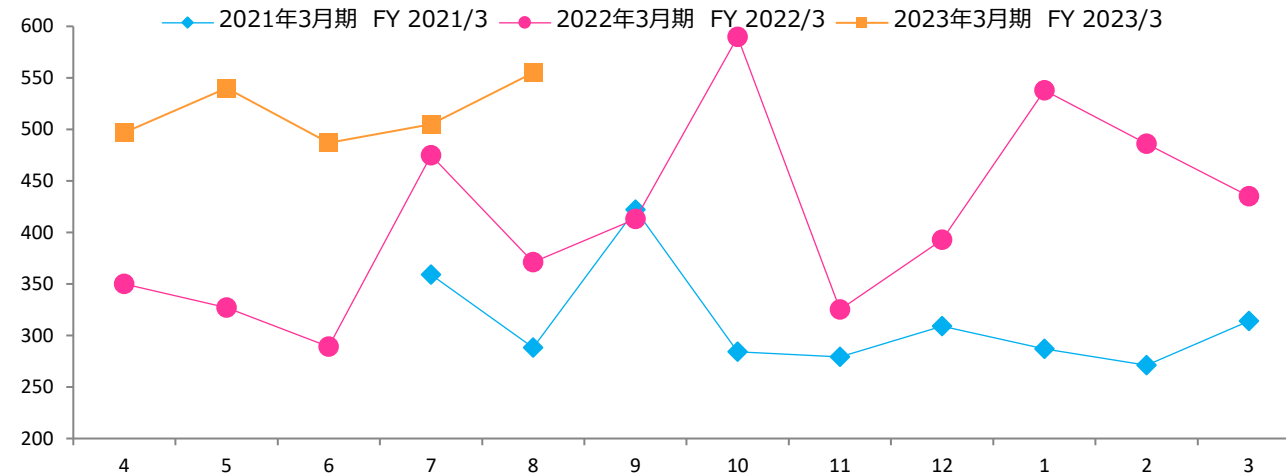


	前期差 Comparison with The previous year	前月差 Comparison with The previous month
輸入品 Imports	9,773	85
国産品 Domestic	-6,364	-382

【脱脂粉乳輸入価格(CIF)】

Skim milk (CIF others price)

(¥/kg)



(¥/kg)

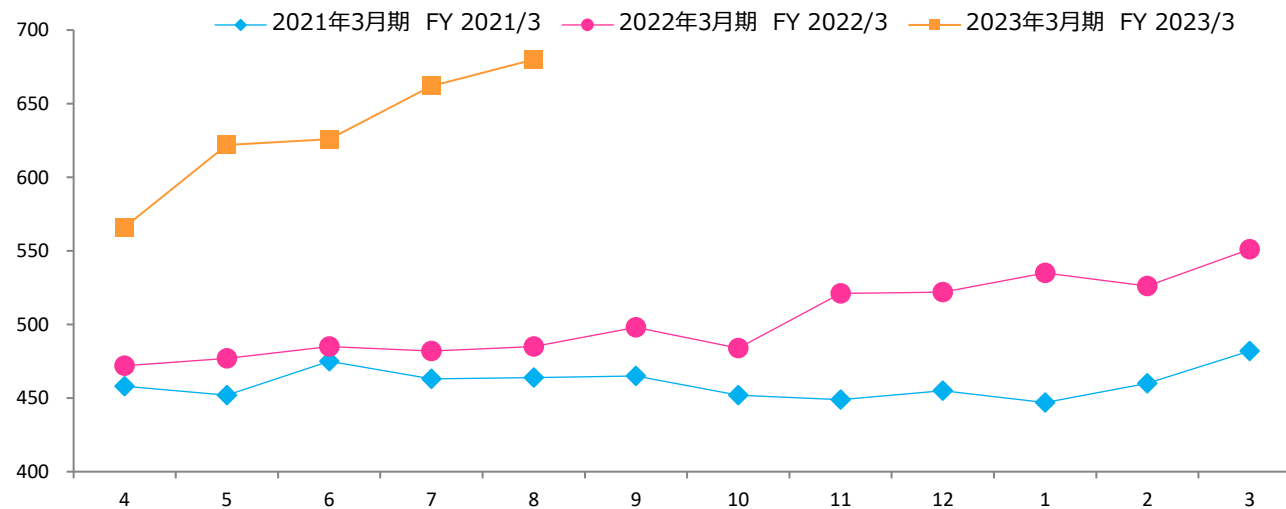
前期差 Comparison with the previous year	前月差 Comparison with The previous month
184	50

グラフ資料出所：農畜産業振興機構（全て単純平均単価）
Source: Agriculture & Livestock Industries Corporation (all graphs based on average prices)

【ナチュラルチーズ輸入価格】

Natural cheese(CIF)

(¥/kg)



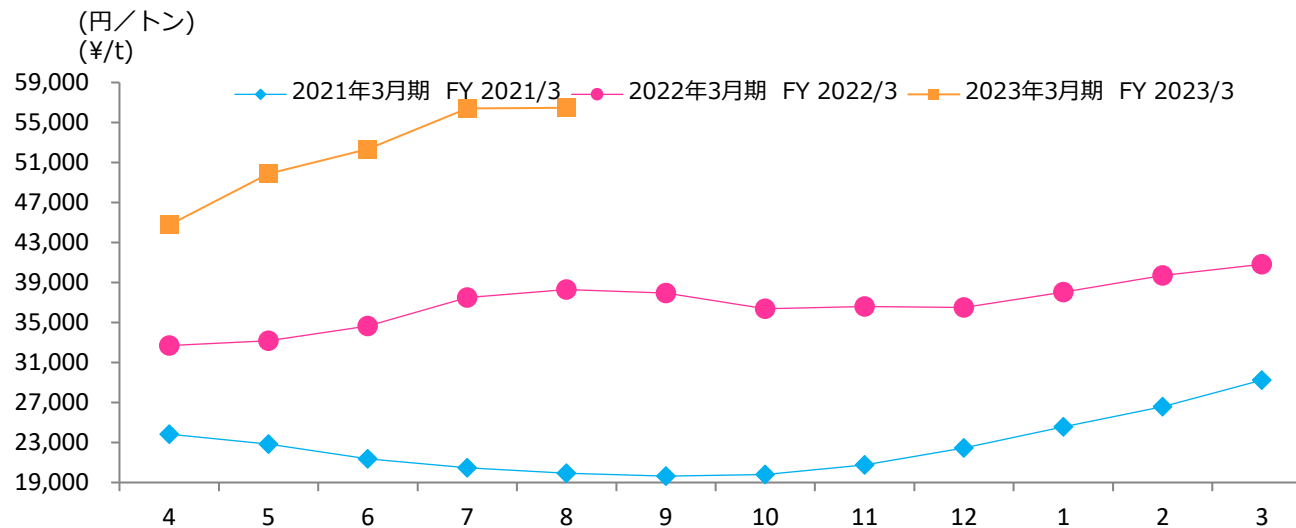
(¥/kg)

前期差 Comparison with the previous year	前月差 Comparison with The previous month
195	18

グラフ資料出所：農畜産業振興機構（全て単純平均単価）
Source: Agriculture & Livestock Industries Corporation (all graphs based on average prices)

【とうもろこしの輸入価格】

Imported Corn Prices



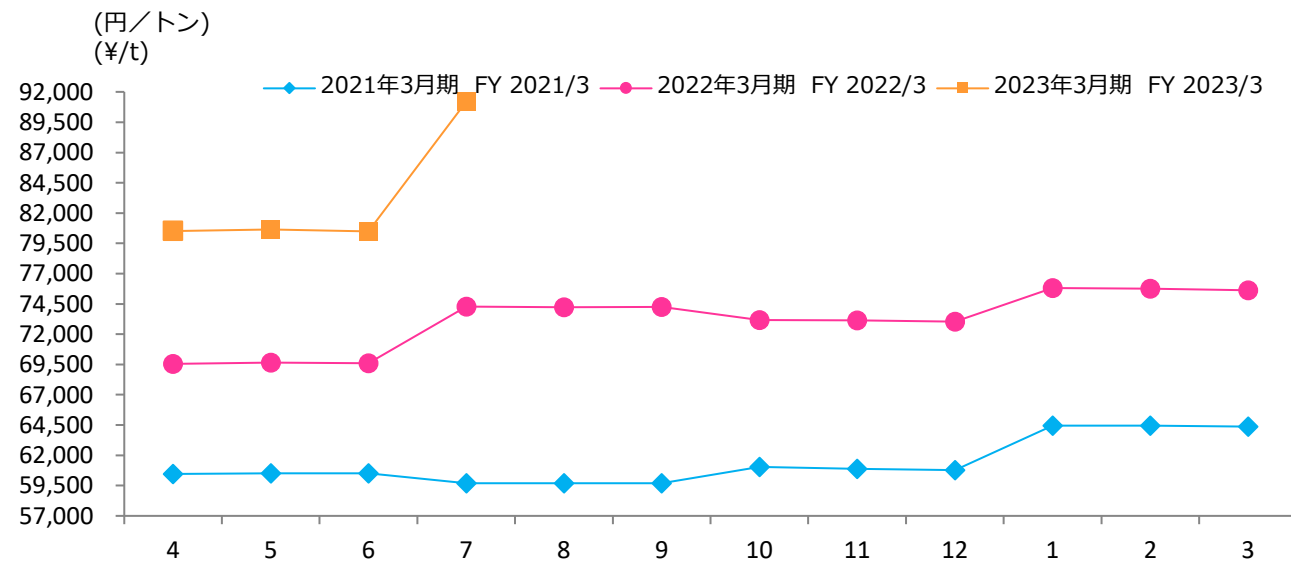
(円/トン)
(¥/t)

前期差 Comparison with the previous year	前月差 Comparison with The previous month
18,180	63

グラフ資料出所：農畜産業振興機構（全て単純平均単価）
Source: Agriculture & Livestock Industries Corporation (all graphs based on average prices)

【配合飼料の価格】

Mixed Feed Prices

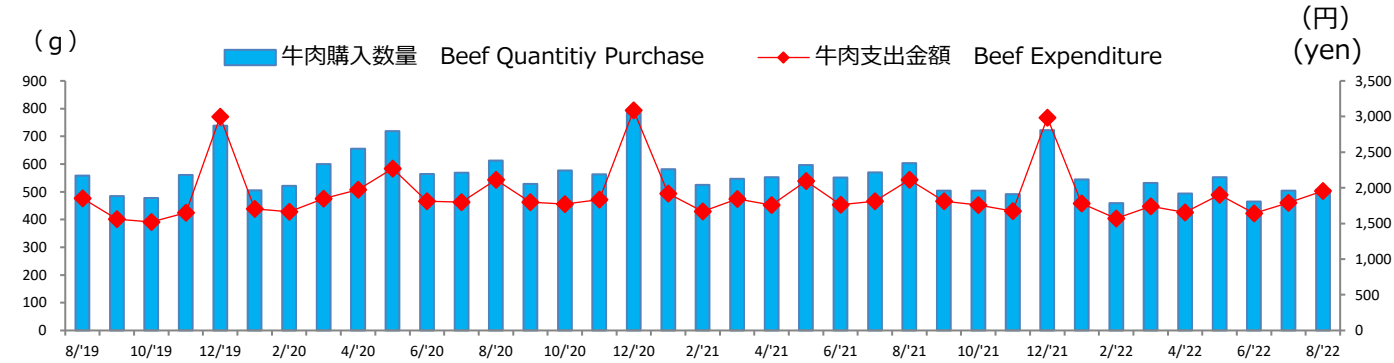


(円/トン)
(¥/t)

前期差 Comparison with the previous year	前月差 Comparison with The previous month
16,936	10,734

グラフ資料出所：農畜産業振興機構（全て単純平均単価）
Source: Agriculture & Livestock Industries Corporation (all graphs based on average prices)

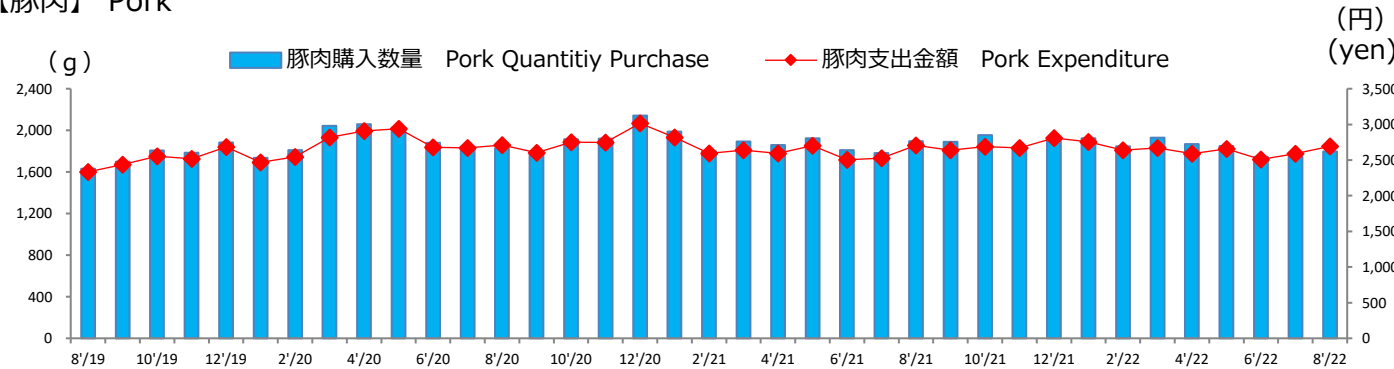
【牛肉】 Beef



グラフ資料出所:総務省「家計調査」
Source: Ministry of Internal Affairs and Communications "Family Income and Expenditure Survey"
二人以上の世帯(農林漁家世帯を除く)
Two-or-more-person Households (Not including agricultural, forestry and fisheries households)

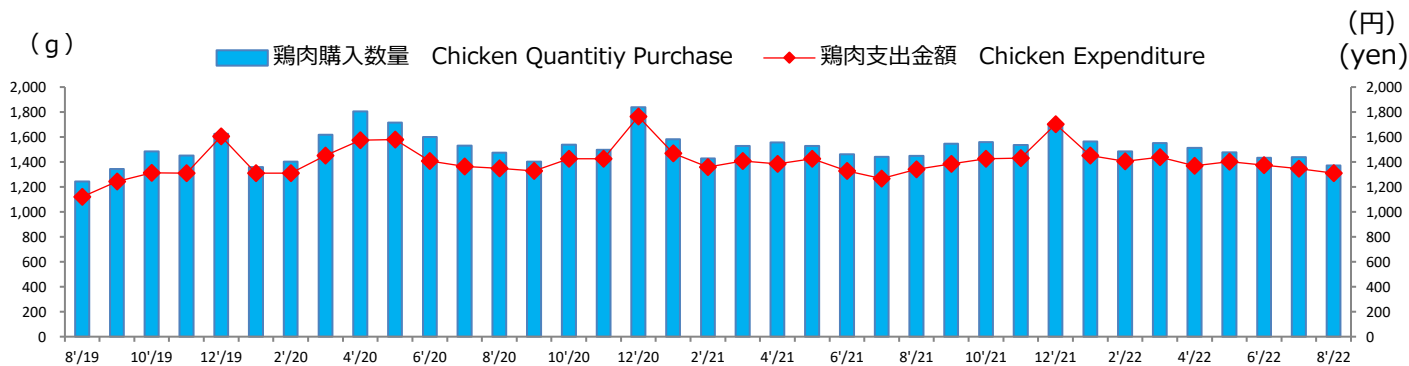
	前期差 Comparison with The previous year	前月差 Comparison with The previous month
購入数量(g) Quantity Purchase(g)	-95	4
支出金額(円) Expenditure (yen)	-155	169

【豚肉】 Pork



	前期差 Comparison with The previous year	前月差 Comparison with The previous month
購入数量(g) Quantity Purchase(g)	-99	51
支出金額(円) Expenditure (yen)	-14	101

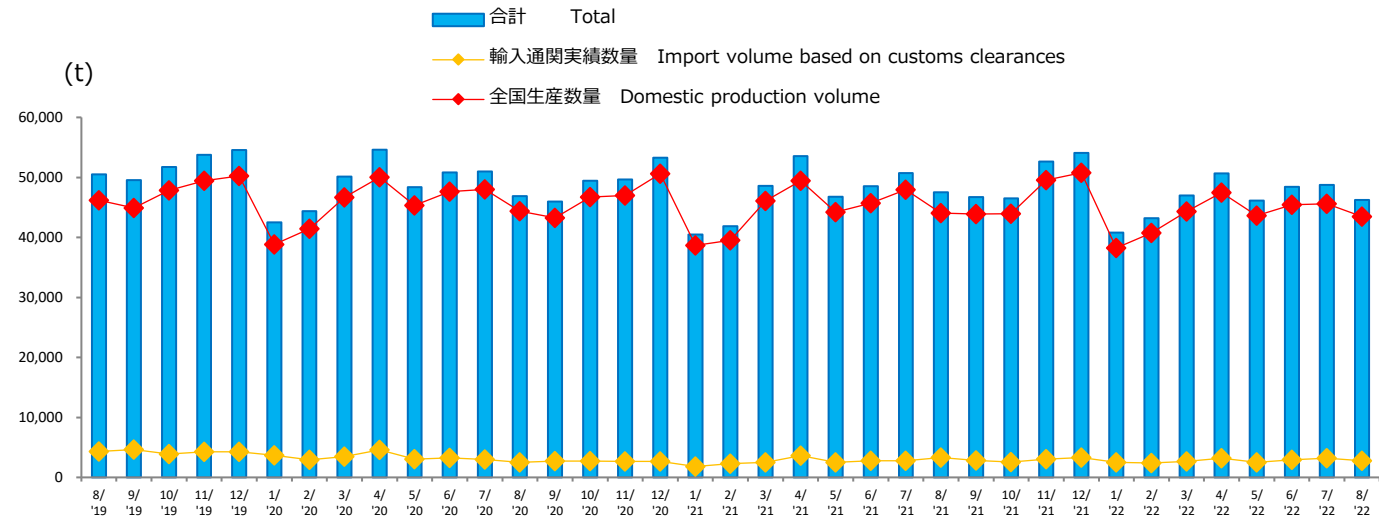
【鶏肉】 Chicken



	前期差 Comparison with The previous year	前月差 Comparison with The previous month
購入数量(g) Quantity Purchase(g)	-77	-67
支出金額(円) Expenditure (yen)	-32	-36

【ハム・ソーセージ全国生産数量・輸入通関実績数量】

Production and Import Volume Based on Customs Clearances for Hams and Sausages

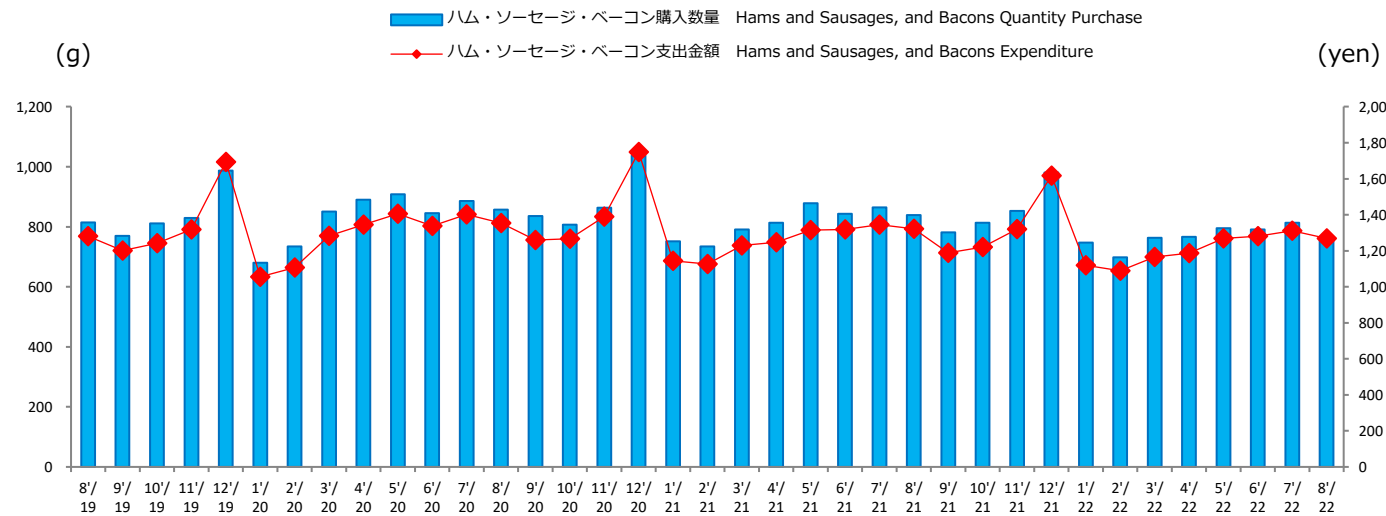


	前期差 Comparison with the previous year	前月差 Comparison with the previous month
輸入量 Imports	-556	-431
生産数量 Production	-595	-2,115

グラフ資料出所：日本食肉加工協会
Source: Japan Meat Processor Association

【家計調査 ハム・ソーセージ・ベーコン購入数量／支出金額】

Family Income and Expenditure Survey for Hams and Sausages, and Bacons



	前期差 Comparison with The previous year	前月差 Comparison with The previous month
購入数量(g) Quantity Purchase(g)	-84	-58
支出金額(円) Expenditure (yen)	-54	-43

グラフ資料出所：総務省「家計調査」
Source: Ministry of Internal Affairs and Communications "Family Income and Expenditure Survey"
二人以上の世帯（農林漁家世帯を除く）
Two-or-more-person Households (Not including agricultural, forestry and fisheries households)

○牛肉相場/Beef Prices (P.3-5)

*暫定数値/The value is provisional.

去勢和牛 A-3 (東京市場、税込、円/KG)/Tokyo Market A-3 Wagyu Steer Prices, Tax Included

出所：東京食肉市場株式会社/Data Source: Tokyo Meat Market Co.Ltd (yen/kg)

	Apr	May	Jun	Jul	Aug	Sep	Oct	Nov	Dec	Jan	Feb	Mar	Average
FY2021/3	1,518	1,618	1,671	1,844	1,849	1,915	2,157	2,322	2,387	2,294	2,228	2,415	2,018
FY2022/3	2,505	2,220	2,153	2,120	1,993	2,068	2,143	2,249	2,375	2,151	2,058	2,199	2,186
FY2023/3	2,278	2,153	2,184	2,187	2,004	2,045	*2126						2,142

豪州チルドビーフ ショートグレインフルセット(円/KG)/Australian Chilled Beef [Full Set (Short Grain Fed)] Prices

出所：食品産業新聞社畜産日報掲載分から単純平均単価

Data Source: "DAILY MEAT & LIVESTOCK" which is a trade business paper published in Japan(all graphs based on average price) (yen/kg)

	Apr	May	Jun	Jul	Aug	Sep	Oct	Nov	Dec	Jan	Feb	Mar	Average
FY2021/3	1,238	1,220	1,225	1,225	1,225	1,255	1,281	1,300	1,290	1,270	1,270	1,270	1,256
FY2022/3	1,270	1,270	1,285	1,285	1,242	1,216	1,236	1,342	1,404	1,469	1,475	1,519	1,334
FY2023/3	1,599	1,590	1,568	1,550	1,502	1,468	*1493						1,546

米国産 牛肉カットアウトバリュー 枝肉ベース (ドル/100ポンド)/U.S. Beef Boxed cutout, Choice 1-3, 600-900 lbs

出所：米国食肉輸出連合会/Source: U.S. Meat Export Federation

(US\$/cwt)

	Apr	May	Jun	Jul	Aug	Sep	Oct	Nov	Dec	Jan	Feb	Mar	Average
FY2021/3	241.9	405.8	242.3	203.2	216.7	220.6	212.4	228.0	217.8	216.7	236.5	231.2	239.4
FY2022/3	271.7	317.6	329.7	273.4	321.7	325.2	286.0	283.5	265.8	282.5	272.8	257.0	290.6
FY2023/3	268.4	260.1	268.2	267.9	264.9	256.0							264.3

豪州 若齢牛価格 (生産者販売価格、豪セント/KG)/Eastern Young Cattle Indicator (EYCI)

出所：豪州食肉家畜生産者事業団/Source: Meat & Livestock Australia Ltd

(A\$/kg)

	Apr	May	Jun	Jul	Aug	Sep	Oct	Nov	Dec	Jan	Feb	Mar	Average
FY2021/3	710.3	730.0	757.5	751.9	769.3	770.2	795.7	820.5	791.5	863.1	870.8	866.4	791.4
FY2022/3	893.6	892.1	914.1	975.8	1,006.2	1,022.6	1,054.6	1,085.1	1,131.7	1,157.9	1,124.4	1,113.5	1,031.0
FY2023/3	1,086.8	1,101.7	1,086.5	962.9	980.3	1,052.3	*1045.9						1,045.1

ウルグアイ 牛生体価格 生体ベース (ドル/100kg)/Uruguay Cattle Prices, >380kg

出所：豪州食肉家畜生産者事業団/Source: Meat & Livestock Australia Ltd

(US\$/lwt)

：Uruguay Instituto Nacional de Carnes

	Apr	May	Jun	Jul	Aug	Sep	Oct	Nov	Dec	Jan	Feb	Mar	Average
FY2021/3	171.9	183.2	188.5	191.3	201.4	193.6	186.7	184.2	170.4	176.2	193.9	195.3	186.4
FY2022/3	193.8	195.9	218.2	222.4	241.2	243.4	248.8	253.0	233.8	236.1	253.8	271.0	234.3
FY2023/3	278.9	297.0	293.9	306.7	297.9	293.1	257.0						289.2

○豚肉相場/Pork Prices(

*暫定数値/The value is provisional.

豚肉枝肉卸売価格 上物 東京市場平均価格、税込(円/KG)/Pork Carcass Prices (Tokyo Market Excellent grade, monthly average, Tax Included)
出所：東京食肉市場株式会社/Data Source:Tokyo Meat Market Co.Ltd (yen/kg)

	Apr	May	Jun	Jul	Aug	Sep	Oct	Nov	Dec	Jan	Feb	Mar	Average
FY2021/3	611	630	624	641	634	621	536	530	536	496	499	479	570
FY2022/3	493	506	620	635	622	600	527	493	579	505	511	507	550
FY2023/3	513	638	662	671	647	644	*652						629

US冷凍ウデ(ピクニック) (円/KG)/U.S. Frozen Pork (Picnic) Prices

※ピクニックとは部位の名前です。

出所：農畜産業振興機構(全て単純平均単価)/Data Source: Agriculture & Livestock Industries Corporation (all graphs based on average price) (yen/kg)

	Apr	May	Jun	Jul	Aug	Sep	Oct	Nov	Dec	Jan	Feb	Mar	Average
FY2021/3	477	490	492	482	485	483	479	478	476	455	455	465	476
FY2022/3	481	485	480	496	485	477	474	471	486	484	471	503	483
FY2023/3	507	494	496	496	502								499

米国産 豚肉カットアウトバリュー 枝肉ベース (ドル/100ポンド)/U.S. Pork Cutout composite carcass, 53-54% lean

出所：米国食肉輸出連合会/Source: U.S. Meat Export Federation

(US\$/cwt)

	Apr	May	Jun	Jul	Aug	Sep	Oct	Nov	Dec	Jan	Feb	Mar	Average
FY2021/3	65.8	105.8	68.5	67.9	72.1	84.8	94.1	81.2	75.2	80.3	88.3	101.3	82.1
FY2022/3	111.2	117.5	123.3	119.8	119.4	108.0	102.6	91.0	86.6	90.6	105.6	105.7	106.8
FY2023/3	106.6	104.4	109.5	120.6	117.0	104.0							110.4

米国 肥育豚価格 (生産者販売価格、セント/ポンド)/Live U.S. Fattening Pig Prices (Pig sales price)

出所：農畜産業振興機構(全て単純平均単価)/Source:Agriculture & Livestock Industries Corporation (all graphs based on average price) (US¢/lb)

	Apr	May	Jun	Jul	Aug	Sep	Oct	Nov	Dec	Jan	Feb	Mar	Average
FY2021/3	36.1	46.5	34.3	34.2	38.9	48.4	55.9	50.3	46.0	47.4	53.9	65.8	46.5
FY2022/3	75.6	81.0	86.2	81.0	78.6	68.8	62.8	54.5	51.8	56.0	67.0	73.6	69.7
FY2023/3	73.5	74.1	79.2	84.0	85.6	71.5							78.0

○鶏肉相場/Chicken Prices(P.10)

*暫定数値/The value is provisional.

鶏肉卸売価格(モモ肉、税抜、円/KG)/Domestic Chicken Thigh Meat Wholesale Prices

出所：食品産業新聞社畜産日報掲載分から単純平均単価

Data Source: "DAILY MEAT & LIVESTOCK" which is a trade business paper published in Japan(all graphs based on average price) (yen/kg)

	Apr	May	Jun	Jul	Aug	Sep	Oct	Nov	Dec	Jan	Feb	Mar	Average
FY2021/3	578	608	609	592	588	602	634	655	685	710	700	693	638
FY2022/3	680	661	633	603	580	579	605	623	633	643	638	618	625
FY2023/3	613	615	615	630	630	650	*667						626

鶏肉卸売価格(ムネ肉、税抜、円/KG)/Domestic Chicken Breast Meat Wholesale Prices

出所：食品産業新聞社畜産日報掲載分から単純平均単価

Data Source: "DAILY MEAT & LIVESTOCK" which is a trade business paper published in Japan(all graphs based on average price) (yen/kg)

	Apr	May	Jun	Jul	Aug	Sep	Oct	Nov	Dec	Jan	Feb	Mar	Average
FY2021/3	237	253	260	267	273	283	293	303	310	310	303	301	283
FY2022/3	305	304	300	300	300	313	340	340	340	330	320	313	317
FY2023/3	310	314	319	330	340	349	*390						327

ブラジル もも肉価格(円/KG)/Brazilian Chicken Thigh Prices

出所：食品産業新聞社畜産日報掲載分から単純平均単価

Data Source: "DAILY MEAT & LIVESTOCK" which is a trade business paper published in Japan(all graphs based on average price) (yen/kg)

	Apr	May	Jun	Jul	Aug	Sep	Oct	Nov	Dec	Jan	Feb	Mar	Average
FY2021/3	260	260	250	237	235	232	235	240	240	240	220	230	240
FY2022/3	265	266	270	270	287	320	375	365	345	330	313	355	313
FY2023/3	441	475	478	480	480	480	*480						472

○飼料価格相場/Market Trends in Grain Feed Prices (P.13)

とうもろこしの輸入価格(円/トン)/Imported Corn Prices

出所：農畜産業振興機構(全て単純平均単価)/Source：Agriculture & Livestock Industries Corporation (all graphs based on average price (yen/t))

	Apr	May	Jun	Jul	Aug	Sep	Oct	Nov	Dec	Jan	Feb	Mar	Average
FY2021/3	23,853	22,861	21,375	20,473	19,955	19,665	19,830	20,774	22,462	24,595	26,602	29,236	22,640
FY2022/3	32,713	33,169	34,653	37,504	38,297	37,959	36,389	36,603	36,505	38,060	39,698	41,069	36,885
FY2023/3	44,770	49,888	52,330	56,414	56,477								51,976

配合飼料の価格動向(円/トン)/Mixed Feed Prices

出所：農畜産業振興機構(全て単純平均単価)/Source：Agriculture & Livestock Industries Corporation (all graphs based on average price (yen/t))

	Apr	May	Jun	Jul	Aug	Sep	Oct	Nov	Dec	Jan	Feb	Mar	Average
FY2021/3	60,455	60,515	60,497	59,686	59,676	59,691	61,042	60,868	60,780	64,456	64,441	64,354	61,372
FY2022/3	69,549	69,655	69,591	74,279	74,220	74,248	73,165	73,144	73,026	75,801	75,748	75,638	73,172
FY2023/3	80,517	80,635	80,481	91,215									83,212

○牛肉需給動向/Beef(P.6)

出所: 農畜産業振興機構

Notes: 1. Boneless cuts equivalent

Source: Agriculture & Livestock Industries Corporation

2. Figures for stocks are estimated by ALIC (t)

FY 2021/3	Apr	May	Jun	Jul	Aug	Sep	Oct	Nov	Dec	Jan	Feb	Mar	Total
供給量/Supplied Quantity	96,131	75,282	78,533	83,298	72,895	71,371	80,385	83,158	80,534	68,883	61,732	74,343	926,545
うち生産量/Production	27,096	25,242	27,824	30,658	25,688	27,113	29,432	33,749	31,285	24,878	24,445	28,145	335,555
うち輸入量/Imports	69,035	50,040	50,709	52,640	47,207	44,258	50,953	49,409	49,249	44,005	37,287	46,198	590,990
推定出回り量/Estimated Marketing Quantity	80,730	69,265	78,404	86,249	74,013	77,371	82,644	88,135	83,050	66,677	62,587	81,223	930,348
うち国産品/Domestic	26,062	24,964	28,339	30,501	25,327	26,085	28,753	32,728	29,877	24,572	23,514	27,439	328,161
うち輸入品/Imported	54,668	44,301	50,065	55,748	48,686	51,286	53,891	55,407	53,173	42,105	39,073	53,784	602,187
推定期末在庫/Estimated Ending Stock	141,987	147,770	147,453	144,076	142,505	136,001	133,096	127,612	124,502	126,325	125,067	117,475	-
うち国産品/Domestic	11,492	11,536	10,575	10,306	10,214	10,738	10,771	11,285	12,099	12,022	12,550	12,544	-
うち輸入品/Imported	130,495	136,234	136,878	133,770	132,291	125,263	122,325	116,327	112,403	114,303	112,517	104,931	-

FY 2022/3	Apr	May	Jun	Jul	Aug	Sep	Oct	Nov	Dec	Jan	Feb	Mar	Total
供給量/Supplied Quantity	84,332	75,091	78,952	81,506	79,310	77,283	83,784	76,837	77,050	66,158	62,466	62,452	905,221
うち生産量/Production	29,036	25,458	26,733	29,501	25,551	26,717	28,581	34,186	31,355	25,761	24,696	28,541	336,114
うち輸入量/Imports	55,296	49,633	52,219	52,005	53,761	50,566	55,203	42,651	45,695	40,397	37,770	33,911	569,107
推定出回り量/Estimated Marketing Quantity	83,501	68,920	73,803	78,215	74,200	68,549	78,341	83,256	82,575	65,064	63,035	67,524	886,984
うち国産品/Domestic	28,098	24,842	25,734	28,482	24,734	25,371	27,617	33,832	31,068	25,598	23,374	28,853	327,601
うち輸入品/Imported	55,403	44,079	48,069	49,734	49,469	43,178	50,723	49,424	51,507	39,466	39,661	38,670	559,383
推定期末在庫/Estimated Ending Stock	117,622	123,233	127,791	130,389	134,775	142,769	147,567	140,348	133,882	134,515	133,485	127,825	-
うち国産品/Domestic	12,798	12,855	13,263	13,590	13,684	14,290	14,608	14,162	13,508	13,210	14,071	13,170	-
うち輸入品/Imported	104,824	110,378	114,528	116,799	121,091	128,479	132,959	126,186	120,374	121,305	119,414	114,655	-

FY 2023/3	Apr	May	Jun	Jul	Aug	Sep	Oct	Nov	Dec	Jan	Feb	Mar	Total
供給量/Supplied Quantity	91,287	72,505	85,341	82,087	80,047								411,267
うち生産量/Production	29,766	26,751	27,678	30,088	26,541								140,824
うち輸入量/Imports	61,521	45,754	57,663	51,999	53,506								270,443
推定出回り量/Estimated Marketing Quantity	92,576	67,166	73,258	73,260	70,104								376,364
うち国産品/Domestic	30,613	25,512	26,882	29,008	25,891								137,906
うち輸入品/Imported	61,963	41,654	46,376	44,252	44,213								238,458
推定期末在庫/Estimated Ending Stock	126,013	130,844	142,418	150,599	159,883								-
うち国産品/Domestic	11,800	12,531	12,818	13,252	13,243								-
うち輸入品/Imported	114,213	118,313	129,600	137,347	146,640								-

○豚肉需給動向/Pork (P.9)

出所:農畜産業振興機構

Notes:1.Boneless cuts equivalent

Source: Agriculture & Livestock Industries Corporation

2.Figures for stocks are estimated by ALIC (t)

FY 2021/3	Apr	May	Jun	Jul	Aug	Sep	Oct	Nov	Dec	Jan	Feb	Mar	Total
供給量/Supplied Quantity	181,807	151,182	152,057	148,978	136,610	137,291	152,571	149,904	154,029	145,420	137,857	152,933	1,800,639
うち生産量/Production	80,239	71,318	72,535	73,967	68,179	71,875	80,156	79,407	82,555	78,800	73,648	83,976	916,655
うち輸入量/Imports	101,568	79,864	79,522	75,011	68,431	65,416	72,415	70,497	71,474	66,620	64,209	68,957	883,984
推定出回り量/Estimated Marketing Quantity	167,907	139,324	152,572	158,510	141,115	144,946	161,334	158,952	160,519	151,043	136,010	155,103	1,827,335
うち国産品/Domestic	82,085	73,523	70,031	75,708	69,117	72,409	80,388	79,178	81,364	76,657	73,069	82,627	916,156
うち輸入品/Imported	85,822	65,801	82,541	82,802	71,998	72,537	80,946	79,774	79,155	74,386	62,941	72,476	911,179
推定期末在庫/Estimated Ending Stock	223,945	235,742	235,073	225,452	220,847	213,071	204,188	194,989	188,311	182,564	184,274	181,984	-
うち国産品/Domestic	23,124	20,858	23,208	21,378	20,340	19,685	19,333	19,411	20,414	22,433	22,875	24,104	-
うち輸入品/Imported	200,821	214,884	211,865	204,074	200,507	193,386	184,855	175,578	167,897	160,131	161,399	157,880	-

FY 2022/3	Apr	May	Jun	Jul	Aug	Sep	Oct	Nov	Dec	Jan	Feb	Mar	Total
供給量/Supplied Quantity	178,773	144,066	149,199	146,026	149,408	149,393	154,848	160,766	156,609	162,079	145,516	154,977	1,851,660
うち生産量/Production	80,131	72,872	73,971	71,419	71,268	75,182	76,972	82,305	82,143	79,561	73,703	83,139	922,666
うち輸入量/Imports	98,642	71,194	75,228	74,607	78,140	74,211	77,876	78,461	74,466	82,518	71,813	71,838	928,994
推定出回り量/Estimated Marketing Quantity	176,016	143,136	146,806	149,081	145,399	150,310	159,236	167,066	164,218	153,283	143,488	153,969	1,852,008
うち国産品/Domestic	78,537	72,522	74,393	72,678	72,189	76,016	77,317	81,908	80,677	79,136	73,664	82,191	921,228
うち輸入品/Imported	97,479	70,614	72,412	76,403	73,210	74,293	81,919	85,158	83,541	74,148	69,824	71,779	930,780
推定期末在庫/Estimated Ending Stock	184,636	185,475	187,729	184,569	188,461	187,419	182,807	176,355	168,588	177,272	179,196	180,095	-
うち国産品/Domestic	25,593	25,852	25,290	23,926	22,888	21,928	21,359	21,604	22,912	23,226	23,161	24,001	-
うち輸入品/Imported	159,043	159,623	162,439	160,643	165,573	165,491	161,448	154,751	145,676	154,046	156,035	156,094	-

FY 2023/3	Apr	May	Jun	Jul	Aug	Sep	Oct	Nov	Dec	Jan	Feb	Mar	Total
供給量/Supplied Quantity	185,042	149,851	162,494	150,461	157,071								
うち生産量/Production	76,226	72,433	73,206	67,448	70,579								
うち輸入量/Imports	108,816	77,418	89,288	83,013	86,492								
推定出回り量/Estimated Marketing Quantity	172,770	142,531	148,336	142,474	149,955								
うち国産品/Domestic	77,840	72,091	74,366	67,235	71,378								
うち輸入品/Imported	94,930	70,439	73,970	75,239	78,577								
推定期末在庫/Estimated Ending Stock	192,212	199,401	213,430	221,300	228,331								-
うち国産品/Domestic	22,232	22,442	21,153	21,249	20,365								-
うち輸入品/Imported	169,980	176,959	192,277	200,051	207,966								-

○鶏肉需給動向(P.11)

出所: 農畜産業振興機構

Notes: 1. Bone in cuts equivalent

注: 数量は骨付き肉ベース。成鶏肉を含む。輸入量には鶏肉以外の家禽肉を含まない。

2. Figures for stocks are estimated by ALIC

Source: Agriculture & Livestock Industries Corporation

3. The production quantity and the estimate (t)

FY 2021/3	Apr	May	Jun	Jul	Aug	Sep	Oct	Nov	Dec	Jan	Feb	Mar	Total
供給量/Supplied Quantity	186,771	171,156	187,957	188,681	167,238	172,325	193,526	184,573	194,936	181,219	176,648	196,426	2,201,457
うち生産量/Production	140,065	135,037	137,304	137,103	126,925	130,849	145,631	139,264	152,225	132,289	131,134	140,799	1,648,625
うち輸入量/Imports	46,706	36,119	50,653	51,578	40,313	41,476	47,895	45,309	42,711	48,930	45,514	55,627	552,832
推定出回り量/Estimated Marketing Quantity	185,516	173,490	186,539	189,318	170,255	173,243	198,793	187,820	201,545	176,279	175,471	189,832	2,208,102
うち国産品/Domestic	143,984	141,134	139,857	126,133	128,468	131,052	146,601	139,644	151,812	132,616	130,132	139,533	1,650,966
うち輸入品/Imported	41,532	32,356	46,682	63,185	41,787	42,191	52,192	48,176	49,733	43,663	45,339	50,299	557,136
推定期末在庫/Estimated Ending Stock	171,702	169,368	170,786	170,149	167,132	166,214	160,947	157,700	151,091	156,031	157,208	163,802	-
うち国産品/Domestic	27,202	21,105	18,552	29,522	27,979	27,776	26,806	26,426	26,839	26,512	27,514	28,780	-
うち輸入品/Imported	144,500	148,263	152,234	140,627	139,153	138,438	134,141	131,274	124,252	129,519	129,694	135,022	-

FY 2022/3	Apr	May	Jun	Jul	Aug	Sep	Oct	Nov	Dec	Jan	Feb	Mar	Total
供給量/Supplied Quantity	191,394	185,055	181,906	183,094	179,022	183,015	198,030	205,802	217,595	190,949	63,107	188,613	2,279,572
うち生産量/Production	139,841	137,646	138,019	137,138	130,939	136,605	145,516	146,726	156,924	137,166	135,353	143,478	1,685,351
うち輸入量/Imports	50,157	46,229	42,812	44,750	46,934	45,194	51,212	57,772	60,671	53,783	49,572	45,135	594,221
推定出回り量/Estimated Marketing Quantity	193,784	184,300	188,225	190,672	180,986	187,964	196,510	200,452	215,921	182,547	180,055	194,133	2,285,721
うち国産品/Domestic	136,965	136,543	136,659	136,718	130,612	137,698	144,620	147,839	154,999	137,555	136,544	144,886	1,681,638
うち輸入品/Imported	55,423	46,577	50,491	52,748	49,225	49,050	50,588	51,309	60,922	44,992	43,511	49,247	604,083
推定期末在庫/Estimated Ending Stock	161,412	162,167	155,848	148,270	146,306	141,357	142,877	148,227	149,901	158,303	163,173	157,653	-
うち国産品/Domestic	31,656	32,759	34,119	34,539	34,866	33,773	34,669	33,556	35,481	35,092	33,901	32,493	-
うち輸入品/Imported	129,756	129,408	121,729	113,731	111,440	107,584	108,208	114,671	114,420	123,211	129,272	125,160	-

FY 2023/3	Apr	May	Jun	Jul	Aug	Sep	Oct	Nov	Dec	Jan	Feb	Mar	Total
供給量/Supplied Quantity	184,639	181,225	192,387	178,478	180,371								917,100
うち生産量/Production	141,073	138,742	140,211	132,858	132,997								685,881
うち輸入量/Imports	43,566	42,483	52,176	45,620	47,374								231,219
推定出回り量/Estimated Marketing Quantity	194,646	182,008	189,681	178,035	180,668								925,038
うち国産品/Domestic	142,219	138,927	140,857	134,490	133,379								689,872
うち輸入品/Imported	52,427	43,081	48,824	43,545	47,289								235,166
推定期末在庫/Estimated Ending Stock	147,646	146,863	149,569	150,012	149,715								-
うち国産品/Domestic	31,347	31,162	30,516	28,884	28,502								-
うち輸入品/Imported	116,299	115,701	119,053	121,128	121,213								-

FY 2021/3

(t)

	Apr	May	Jun	Jul	Aug	Sep	Oct	Nov	Dec	Jan	Feb	Mar	Total
国内生産量/Production	50,025	45,342	47,604	47,990	44,362	43,251	46,711	46,991	50,629	38,661	39,536	46,069	547,171
輸入量/Imports	4,610	3,049	3,247	3,004	2,529	2,751	2,757	2,678	2,663	1,849	2,308	2,501	33,946
合計/Supplied Quantity	54,635	48,391	50,851	50,994	46,891	46,002	49,468	49,669	53,292	40,484	41,844	48,570	581,117

FY 2022/3

(t)

	Apr	May	Jun	Jul	Aug	Sep	Oct	Nov	Dec	Jan	Feb	Mar	Total
国内生産量/Production	49,465	44,238	45,733	47,941	44,057	43,883	43,942	49,557	50,791	38,269	40,750	44,348	542,974
輸入量/Imports	3,648	2,529	2,797	2,778	3,315	2,850	2,560	3,077	3,316	2,532	2,437	2,661	34,500
合計/Supplied Quantity	53,113	46,767	48,531	50,719	47,530	46,733	46,503	52,643	54,107	40,801	43,187	47,009	577,474

FY 2023/3

(t)

	Apr	May	Jun	Jul	Aug	Sep	Oct	Nov	Dec	Jan	Feb	Mar	Total
国内生産量/Production	47,459	43,605	45,445	45,577	43,462								225,548
輸入量/Imports	3,226	2,540	2,966	3,190	2,759								14,681
合計/Supplied Quantity	50,685	48,411	48,411	48,767	46,221								240,229

○乳製品相場/Dairy Products (P.12)

脱脂粉乳(CIF、その他、円/kg)/Skim milk(CIF、Others purchase price)

出所：農畜産業振興機構(全て単純平均金単価)/Source：Agriculture & Livestock Industries Corporation (all graphs based on average price) (yen/kg)

	Apr	May	Jun	Jul	Aug	Sep	Oct	Nov	Dec	Jan	Feb	Mar	Average
FY 2021/3				359	288	422	284	279	309	287	271	314	313
FY 2022/3	350	327	289	475	371	413	590	325	393	538	486	435	416
FY 2023/3	497	540	487	505	555								517

ナチュラルチーズ(CIF、円/kg)/Natural cheese(CIF)

出所：農畜産業振興機構(全て単純平均金単価)/Source：Agriculture & Livestock Industries Corporation (all graphs based on average price) (yen/kg)

	Apr	May	Jun	Jul	Aug	Sep	Oct	Nov	Dec	Jan	Feb	Mar	Average
FY 2021/3	458	452	475	463	464	465	452	449	455	447	460	482	460
FY 2022/3	472	477	485	482	485	498	484	521	522	535	526	551	503
FY 2023/3	566	622	626	662	680								631

○「家計調査」購入数量/Family Income and Expenditure Survey:Quantity Purchase (P.14-15)

出所:総務省「家計調査」

Source:Ministry of Internal Affairs and Communications "Family Income and Expenditure Survey"

Two-or-more-person Households(Not including agricultural,forestry and fisheries households)

(g)

2020	Jan	Feb	Mar	Apr	May	Jun	Jul	Aug	Sep	Oct	Nov	Dec
ハム・ソーセージ・ベーコン購入数量/Hams and Sausages, and Bacons	680	734	851	890	908	845	886	857	836	807	863	1,037
牛肉購入数量/Beef	505	522	600	655	719	564	569	613	528	577	563	784
豚肉購入数量/Pork	1,737	1,810	2,044	2,058	2,024	1,881	1,845	1,827	1,769	1,915	1,920	2,143
鶏肉購入数量/Chicken	1,358	1,402	1,617	1,805	1,716	1,599	1,530	1,473	1,401	1,538	1,498	1,839

2021	Jan	Feb	Mar	Apr	May	Jun	Jul	Aug	Sep	Oct	Nov	Dec
ハム・ソーセージ・ベーコン購入数量/Hams and Sausages, and Bacons	751	734	791	813	878	843	865	839	781	813	853	981
牛肉購入数量/Beef	581	525	547	553	597	551	570	603	504	504	491	722
豚肉購入数量/Pork	1,989	1,800	1,894	1,859	1,923	1,810	1,782	1,896	1,889	1,955	1,841	1,921
鶏肉購入数量/Chicken	1,582	1,428	1,528	1,556	1,527	1,461	1,440	1,449	1,546	1,559	1,536	1,695

2022	Jan	Feb	Mar	Apr	May	Jun	Jul	Aug	Sep	Oct	Nov	Dec
ハム・ソーセージ・ベーコン購入数量/Hams and Sausages, and Bacons	747	698	763	766	795	791	813	755				
牛肉購入数量/Beef	544	459	532	494	553	465	504	508				
豚肉購入数量/Pork	1,923	1,848	1,930	1,868	1,850	1,745	1,746	1,797				
鶏肉購入数量/Chicken	1,563	1,483	1,550	1,512	1,476	1,433	1,439	1,372				

○「家計調査」支出金額/Family Income and Expenditure Survey:Expenditure (P.14-15)

出所:総務省「家計調査」

(yen)

2020	Jan	Feb	Mar	Apr	May	Jun	Jul	Aug	Sep	Oct	Nov	Dec
ハム・ソーセージ・ベーコン支出金額/Hams and Sausages, and Bacons	1,056	1,106	1,283	1,345	1,405	1,337	1,401	1,353	1,259	1,266	1,390	1,748
牛肉支出金額//Beef	1,704	1,664	1,848	1,976	2,268	1,811	1,797	2,113	1,801	1,771	1,836	3,088
豚肉支出金額/Pork	2,469	2,545	2,820	2,907	2,942	2,678	2,671	2,710	2,605	2,751	2,746	3,017
鶏肉支出金額/Chicken	1,309	1,310	1,451	1,574	1,578	1,408	1,364	1,348	1,327	1,424	1,425	1,763

2021	Jan	Feb	Mar	Apr	May	Jun	Jul	Aug	Sep	Oct	Nov	Dec
ハム・ソーセージ・ベーコン支出金額/Hams and Sausages, and Bacons	1,144	1,126	1,229	1,248	1,314	1,318	1,345	1,322	1,189	1,220	1,320	1,617
牛肉支出金額//Beef	1,920	1,670	1,845	1,759	2,096	1,765	1,813	2,113	1,811	1,760	1,675	2,983
豚肉支出金額/Pork	2,817	2,594	2,641	2,594	2,701	2,506	2,527	2,705	2,639	2,690	2,670	2,808
鶏肉支出金額/Chicken	1,469	1,359	1,406	1,384	1,426	1,328	1,265	1,341	1,383	1,424	1,429	1,702

2022	Jan	Feb	Mar	Apr	May	Jun	Jul	Aug	Sep	Oct	Nov	Dec
ハム・ソーセージ・ベーコン支出金額/Hams and Sausages, and Bacons	1,120	1,089	1,166	1,186	1,268	1,281	1,311	1,268				
牛肉支出金額//Beef	1,781	1,571	1,739	1,654	1,904	1,643	1,789	1,958				
豚肉支出金額/Pork	2,755	2,640	2,672	2,590	2,657	2,511	2,590	2,691				
鶏肉支出金額/Chicken	1,450	1,404	1,439	1,368	1,403	1,375	1,345	1,309				

〒141-6013 東京都品川区大崎2-1-1
ThinkPark Tower
日本ハム株式会社 広報IR部
電話：03-4555-8024

Public & Investor Relations Department
NH Foods Ltd.
ThinkPark Tower
2-1-1 Osaki, Shinagawa-ku, Tokyo 141-6013
Tel: +81-3-4555-8024