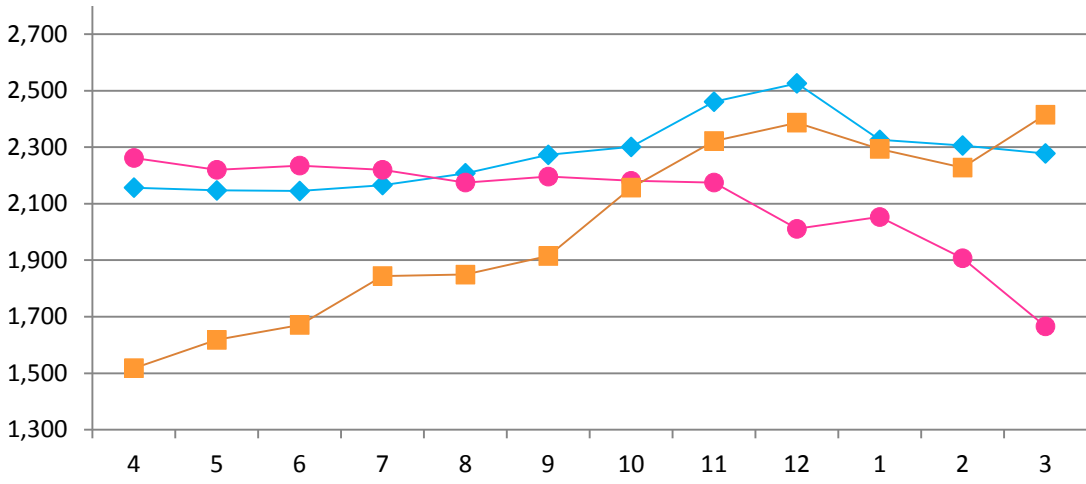


2021年3月度 市場動向資料集

March, 2021 Market Trends

日本ハム株式会社
NH Foods Ltd.
April, 26, 2021

【去勢和牛 A-3卸売価格(東京市場、税込)】
Tokyo Market A-3 Wagyu Steer Prices, Tax Included
(¥/kg)

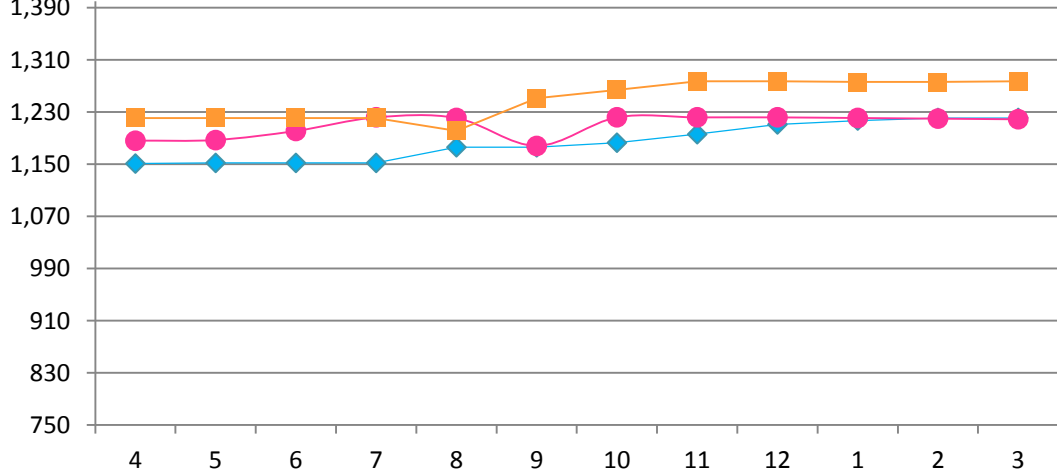


(¥/kg)

| 前期差 Comparison with the previous year | 前月差 Comparison with The previous month |
|---|--|
| 749 | 187 |

グラフ資料出所: 東京食肉市場株式会社
Date Source: Tokyo Meat Market Co. Ltd

【豪州産チルドビーフ ショートグレインフルセット価格】
Australian Chilled Beef [Full Set (Short Grain Fed)] Prices
(¥/kg)



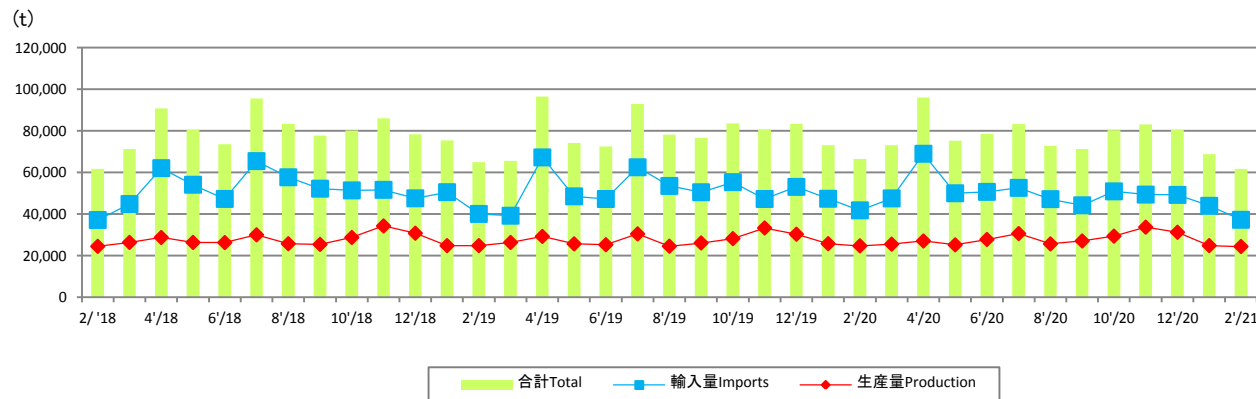
(¥/kg)

| 前期差 Comparison with the previous year | 前月差 Comparison with The previous month |
|---|--|
| 58 | 1 |

グラフ資料出所: 農畜産業振興機構(全て単純平均単価)
Date Source: Agriculture & Livestock Industries Corporation
(all graphs based on average prices)

【生産量と輸入量】

Production and Imports



グラフ資料出所: 農畜産業振興機構

Source: Agriculture & Livestock Industries Corporation

注: 数量は部分肉ベース。輸入量は煮沸肉並びにくず肉のうちほほ肉及び頭肉のみ含む。

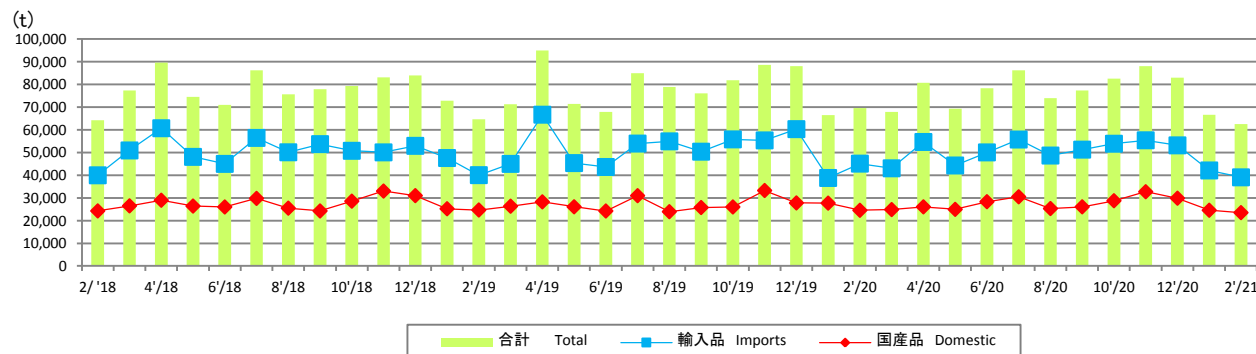
Notes: 1. Boneless cuts equivalent

2. Figures for stocks are estimated by ALIC

| | 前期差 Comparison with The previous year | 前月差 Comparison with The previous month |
|-------------------|---|--|
| 輸入量 Imports | -4,539 | -6,718 |
| 生産量 Production | -313 | -433 |

【推定出回り量】

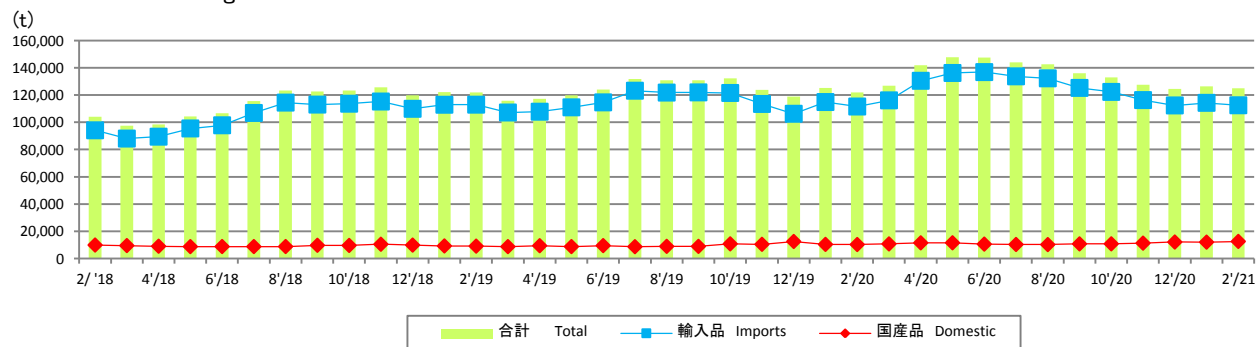
Estimated Marketing Quantity



| | 前期差 Comparison with The previous year | 前月差 Comparison with The previous month |
|-----------------|---|--|
| 輸入品 Imports | -6,043 | -3,032 |
| 国産品 Domestic | -1,039 | -1,058 |

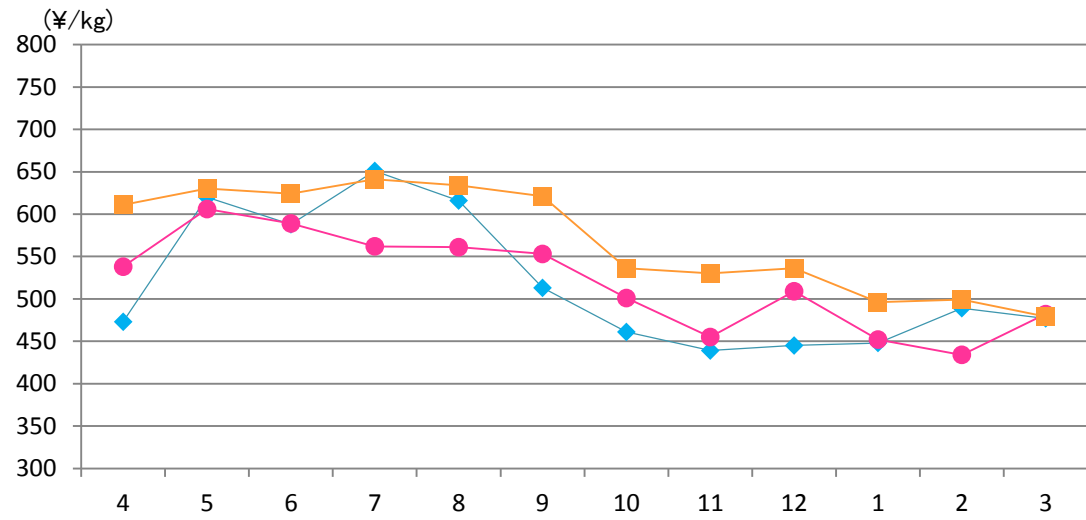
【推定期末在庫】

Estimated Ending Stock



| | 前期差 Comparison with The previous year | 前月差 Comparison with The previous month |
|-----------------|---|--|
| 輸入品 Imports | 910 | -1,786 |
| 国産品 Domestic | 2,283 | 528 |

【豚肉枝肉卸売価格 上物 東京食肉市場平均価格 税込】
Pork Carcass Prices (Tokyo Market Excellent Grade, monthly average, Tax Included)



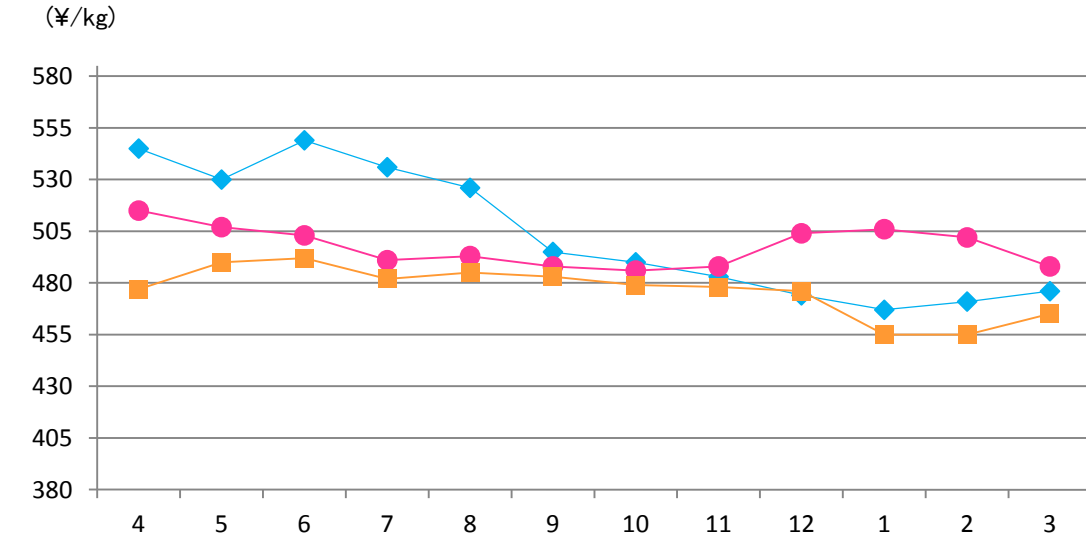
◆ 2019年3月期 FY2019/3
● 2020年3月期 FY2020/3
■ 2021年3月期 FY2021/3

(¥/kg)

| 前期差 Comparison with the previous year | 前月差 Comparison with The previous month |
|---|--|
| -3 | -20 |

グラフ資料出所: 東京食肉市場株式会社
Date Source: Tokyo Meat Market Co. Ltd

【U.S.冷凍ウデ(英名:ピクニック)価格】
U.S. Frozen Pork (Picnic) Prices



◆ 2019年3月期 FY 2019/3
● 2020年3月期 FY 2020/3
■ 2021年3月期 FY 2021/3

(¥/kg)

| 前期差 Comparison with the previous year | 前月差 Comparison with The previous month |
|---|--|
| -23 | 10 |

グラフ資料出所: 農畜産業振興機構(全て単純平均単価)
Date Source: Agriculture & Livestock Industries Corporation
(all graphs based on average prices)

【生産量と輸入量】

Production and Imports

グラフ資料出所：農畜産業振興機構

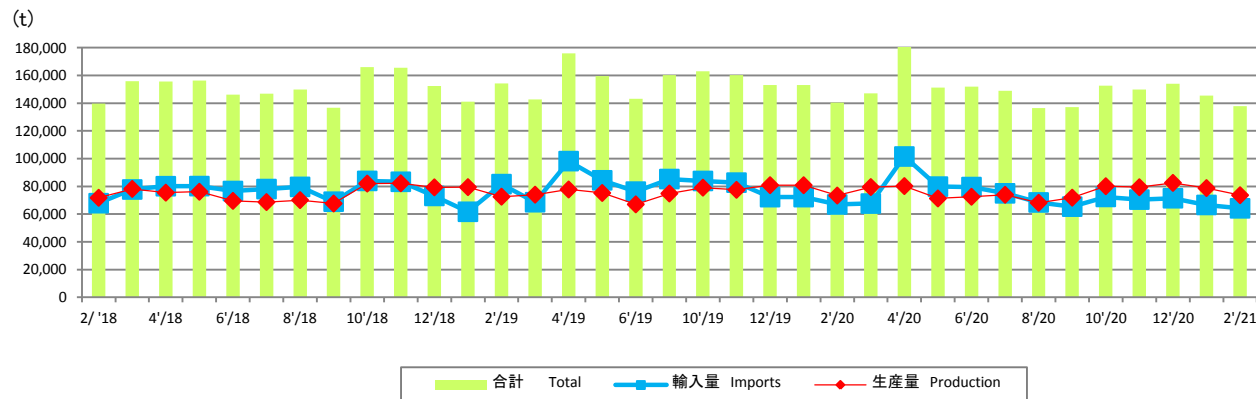
Source: Agriculture & Livestock Industries Corporation

注：数量は部分肉ベース。輸入量は煮沸肉並びにくず肉のうちほほ肉及び頭肉のみ含む。

Notes: 1. Boneless cuts equivalent

2. Figures for stocks are estimated by ALIC

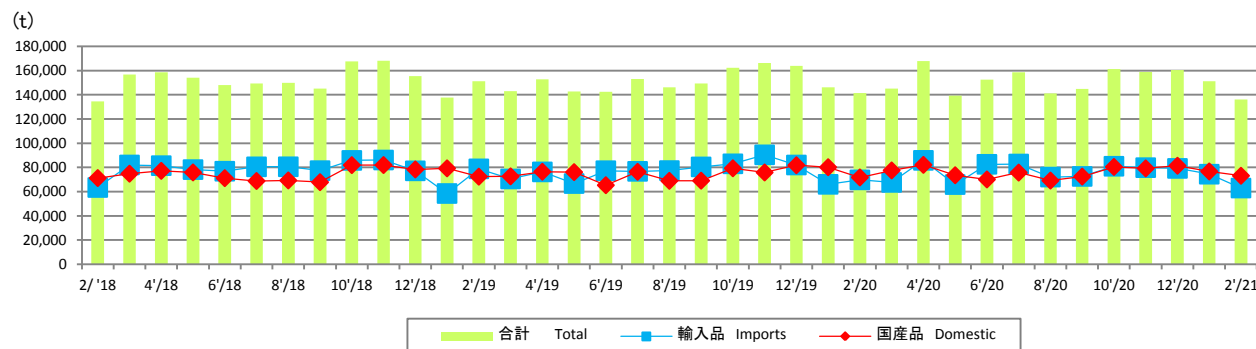
(t)



■ 合計 Total ■ 輸入量 Imports ◆ 生産量 Production

【推定出回り量】

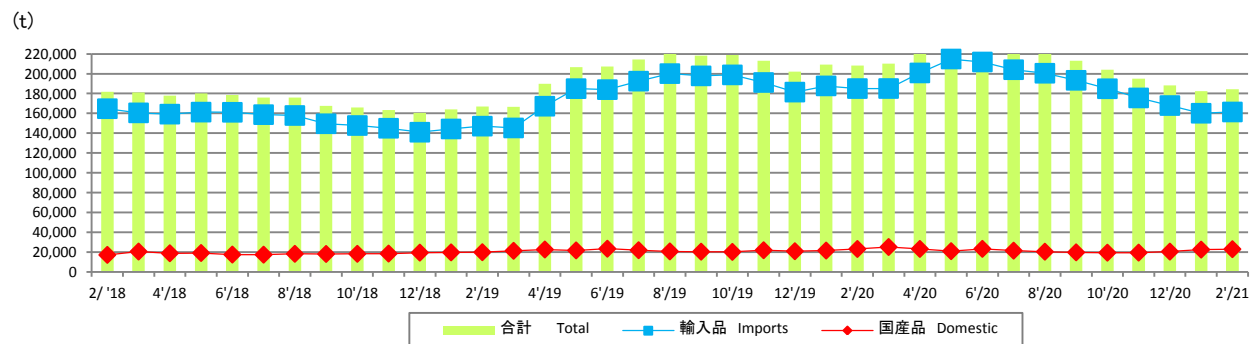
Estimated Marketing Quantity



■ 合計 Total ■ 輸入品 Imports ◆ 国産品 Domestic

【推定期末在庫】

Estimated Ending Stock



■ 合計 Total ■ 輸入品 Imports ◆ 国産品 Domestic

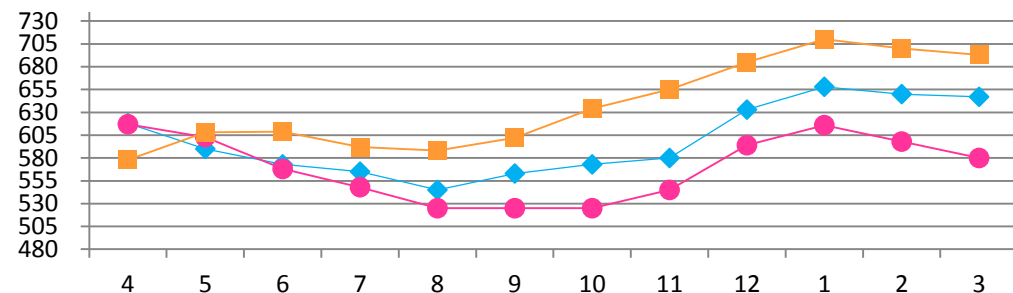
| | 前期差 Comparison with The previous year | 前月差 Comparison with The previous month |
|-------------------|---|--|
| 輸入量 Imports | -2,778 | -2,411 |
| 生産量 Production | 223 | -5,152 |

| | 前期差 Comparison with The previous year | 前月差 Comparison with The previous month |
|-----------------|---|--|
| 輸入品 Imports | -6,742 | -11,445 |
| 国産品 Domestic | 1,355 | -3,588 |

| | 前期差 Comparison with The previous year | 前月差 Comparison with The previous month |
|-----------------|---|--|
| 輸入品 Imports | -23,643 | 1,268 |
| 国産品 Domestic | -202 | 442 |

【鶏肉卸売価格(モモ肉、税抜)】

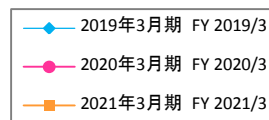
Domestic Chicken Thigh Meat Wholesale Prices
(¥/kg)



グラフ資料出所: 食品産業新聞社畜産日報掲載分から単純平均単価

Date Source: "DAILY MEAT & LIVESTOCK"

which is a trade business paper published in Japan(all graphs based on Average Price)

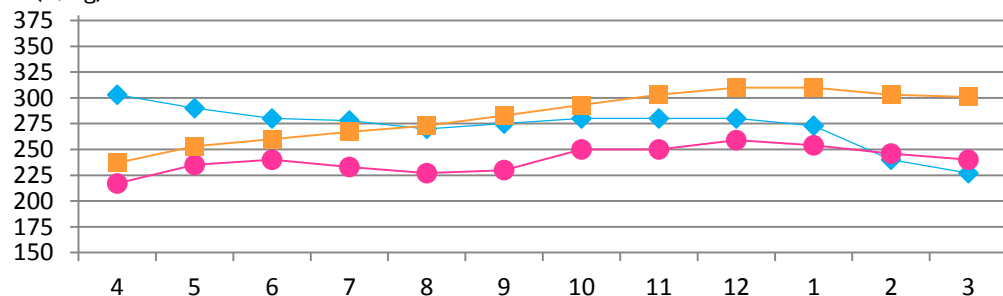


(¥/kg)

| 前期差 Comparison with the previous year | 前月差 Comparison with The previous month |
|---|--|
| 113 | -7 |

【鶏肉卸売価格(ムネ肉、税抜)】

Domestic Chicken Breast Meat Wholesale Prices
(¥/kg)

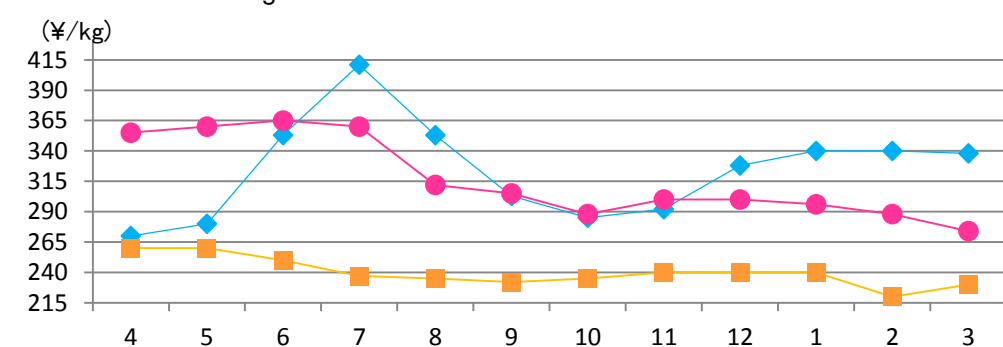


(¥/kg)

| 前期差 Comparison with the previous year | 前月差 Comparison with The previous month |
|---|--|
| 61 | -2 |

【ブラジル産もも肉価格】

Brazilian Chicken Thigh Prices
(¥/kg)

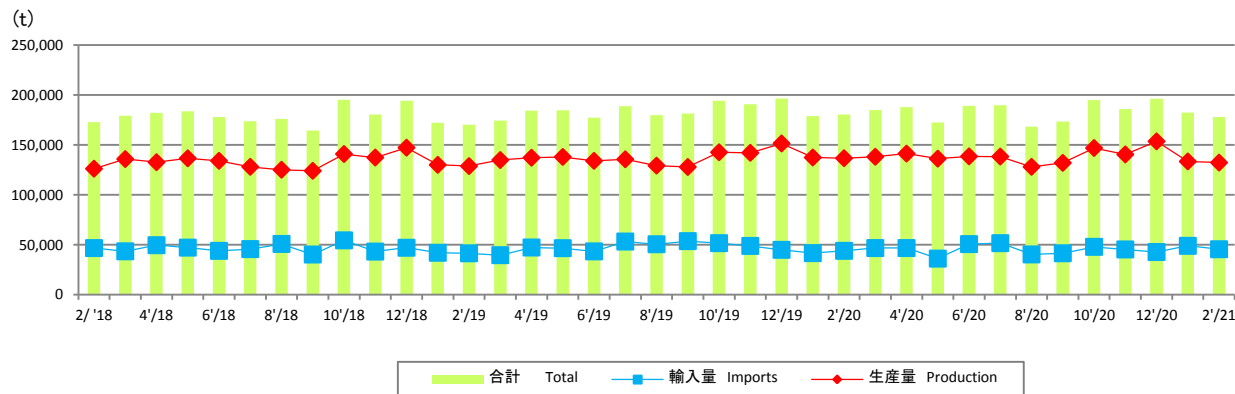


(¥/kg)

| 前期差 Comparison with the previous year | 前月差 Comparison with The previous month |
|---|--|
| -44 | 10 |

【生産量と輸入量】

Production and Imports



グラフ資料出所: 農畜産業振興機構

Source: Agriculture & Livestock Industries Corporation

注: 生産量は骨付き肉ベース。成鶏肉を含む。輸入量には鶏肉以外の家禽肉を含まない。

注: 生産量、国産品の推定出回り量は2010年2月をもって公表終了。

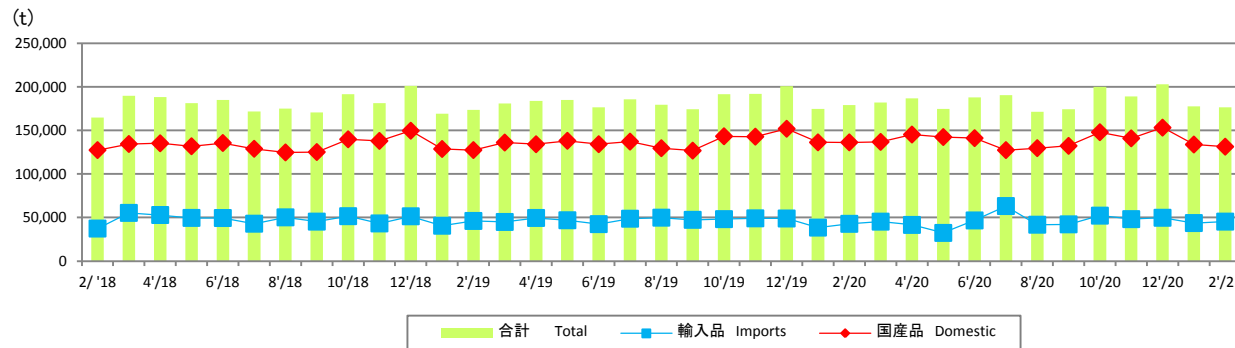
Notes: 1. *Bone in cuts equivalent

2. Figures for stocks are estimated by ALIC

3. *The production quantity and the estimated marketing quantity on the domestic one are made public only until February, 2010.

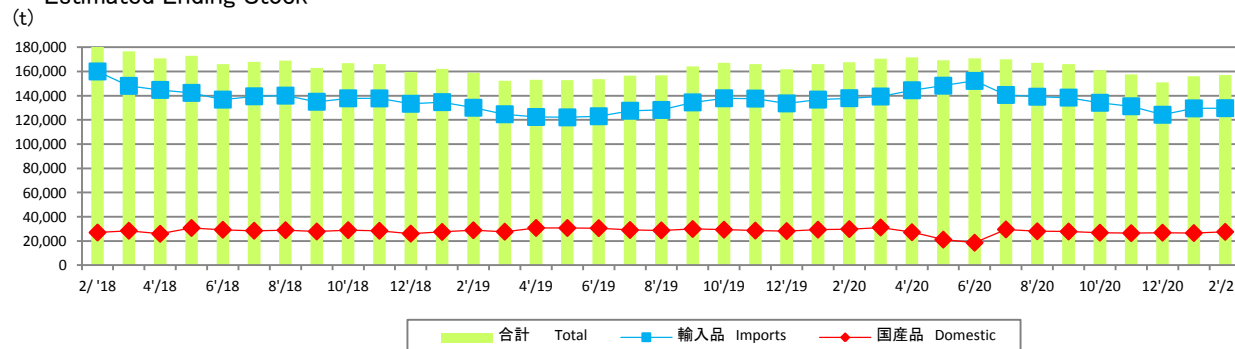
【推定出回り量】

Estimated Marketing Quantity



【推定期末在庫】

Estimated Ending Stock



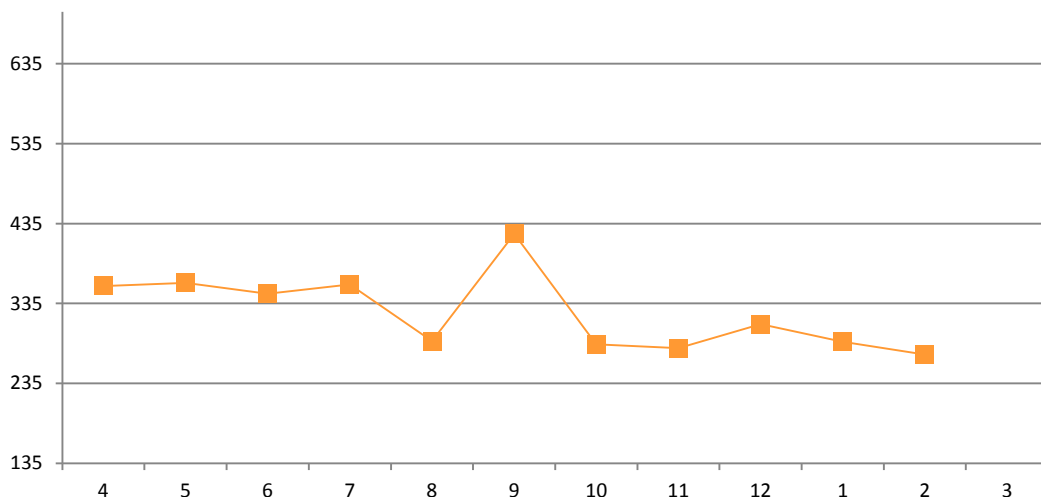
| | 前期差 Comparison with The previous year | 前月差 Comparison with The previous month |
|-------------------|---|--|
| 輸入量 Imports | 1,595 | -3,416 |
| 生産量 Production | -4,408 | -1,168 |

| | 前期差 Comparison with The previous year | 前月差 Comparison with The previous month |
|-----------------|---|--|
| 輸入品 Imports | 2,564 | 1,676 |
| 国産品 Domestic | -4,951 | -2,497 |

| | 前期差 Comparison with The previous year | 前月差 Comparison with The previous month |
|-----------------|---|--|
| 輸入品 Imports | -8,236 | 175 |
| 国産品 Domestic | -2,266 | 1,002 |

【脱脂粉乳輸入価格(CIF)】

Skim milk (CIF Others purchase price)
(¥/kg)



2021年3月期 FY 2021/3

前期差
Comparison with
the previous year

前月差
Comparison with
The previous month

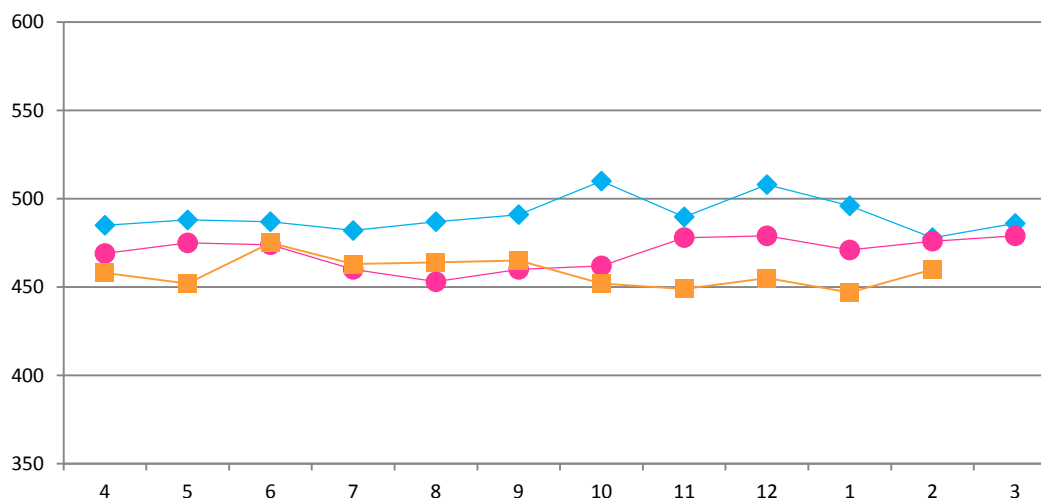
-

-16

グラフ資料出所: 農畜産業振興機構(全て単純平均単価)
Source: Agriculture & Livestock Industries Corporation (all graphs based on average prices)

【ナチュラルチーズ輸入価格】

Natural cheese (CIF)
(¥/kg)



2019年3月期 FY 2019/3
2020年3月期 FY 2020/3
2021年3月期 FY 2021/3

前期差
Comparison with
the previous year

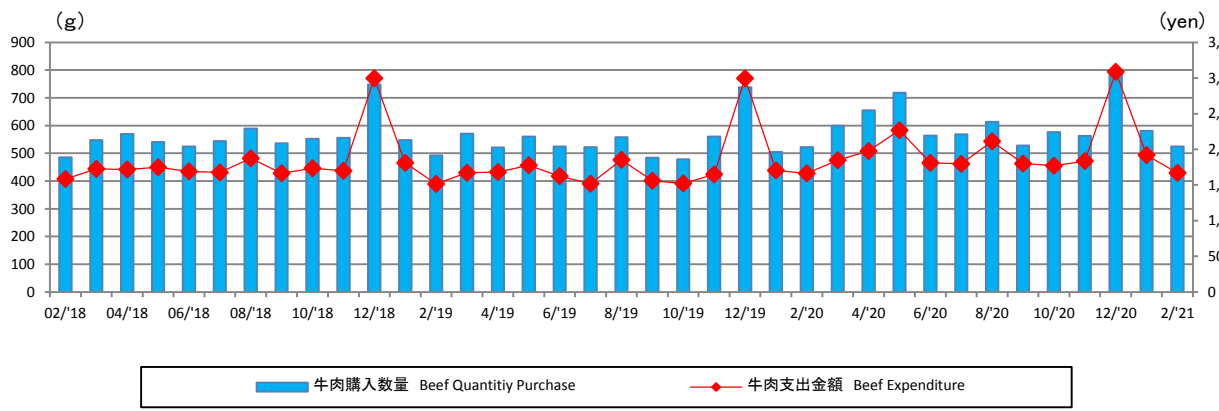
前月差
Comparison with
The previous month

-16

13

グラフ資料出所: 農畜産業振興機構(全て単純平均単価)
Source: Agriculture & Livestock Industries Corporation (all graphs based on average prices)

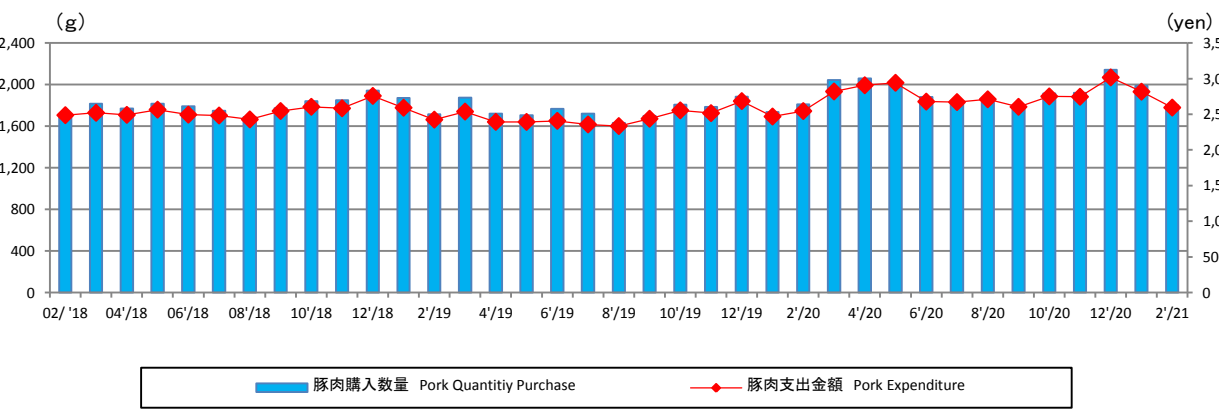
【牛肉】 Beef



グラフ資料出所: 総務省「家計調査」
 Source: Ministry of Internal Affairs and Communications "Family Income and Expenditure Survey"
 二人以上の世帯(農林漁家世帯を除く)
 Two-or-more-person Households (Not including agricultural, forestry and fisheries households)

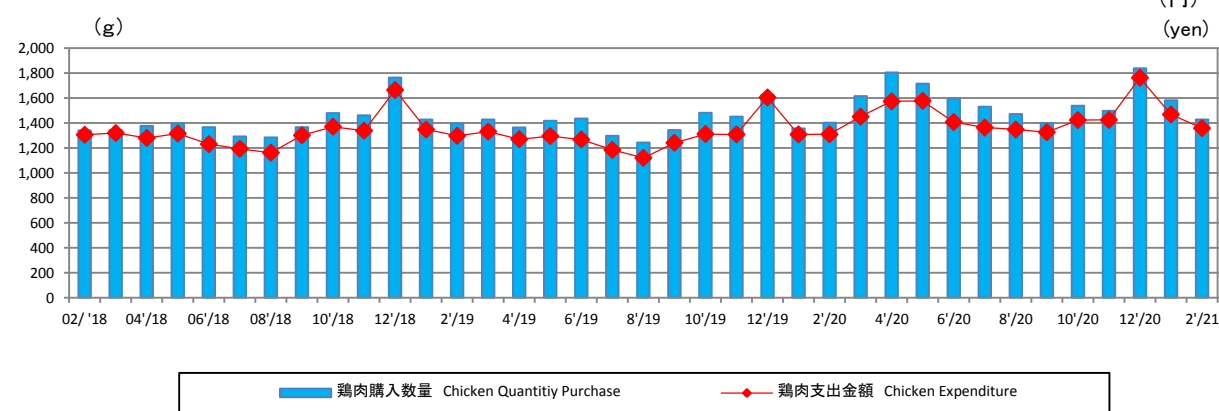
| | 前期差 Comparison with The previous year | 前月差 Comparison with The previous month |
|------------------------------------|---|--|
| 購入数量(g) Quantity Purchase(g) | 3 | -56 |
| 支出金額(円) Expenditure (yen) | 6 | -250 |

【豚肉】 Pork



| | 前期差 Comparison with The previous year | 前月差 Comparison with The previous month |
|------------------------------------|---|--|
| 購入数量(g) Quantity Purchase(g) | -10 | -189 |
| 支出金額(円) Expenditure (yen) | 49 | -223 |

【鶏肉】 Chicken

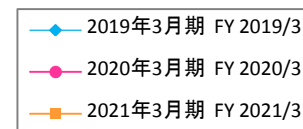
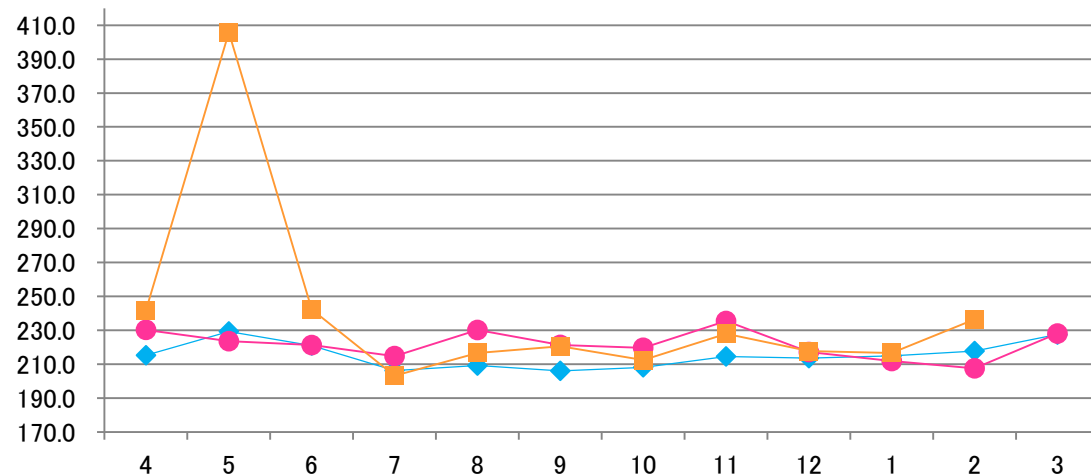


| | 前期差 Comparison with The previous year | 前月差 Comparison with The previous month |
|------------------------------------|---|--|
| 購入数量(g) Quantity Purchase(g) | 26 | -154 |
| 支出金額(円) Expenditure (yen) | 49 | -110 |

【米国産 牛肉カットアウトバリュー 枝肉ベース】

U.S. Beef Boxed cutout, Choice 1-3, 600-900 lbs

(ドル/100ポンド)
(US \$/cwt)



(ドル/100ポンド)
(US \$/cwt)

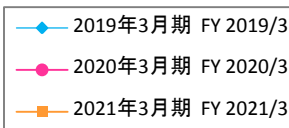
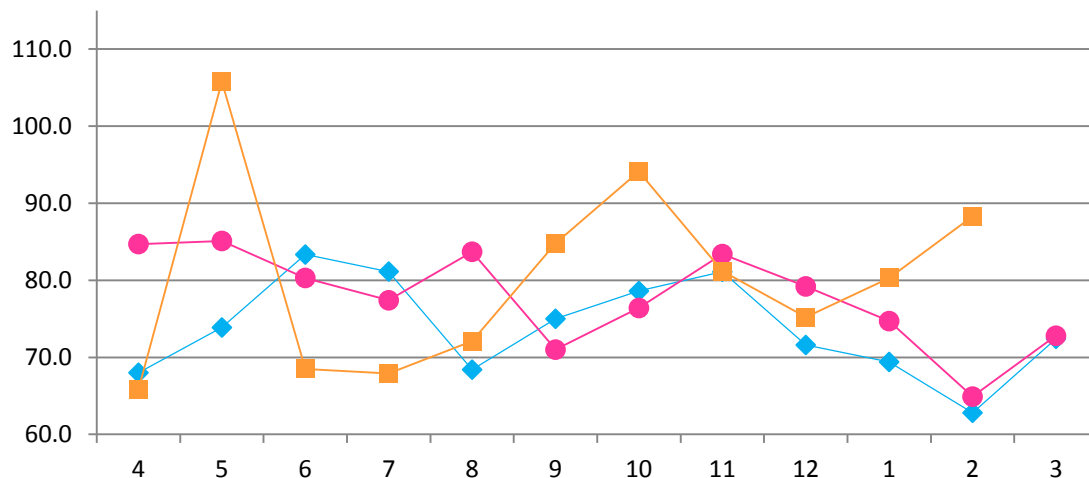
| 前期差 Comparison with the previous year | 前月差 Comparison with The previous month |
|---|--|
| 28.9 | 19.8 |

グラフ資料出所: 米国食肉輸出連合会
Source: U.S. Meat Export Federation

【米国産 豚肉カットアウトバリュー 枝肉ベース】

U.S. Pork Cutout composite carcass, 53-54% lean

(ドル/100ポンド)
(US \$/cwt)



(ドル/100ポンド)
(US \$/cwt)

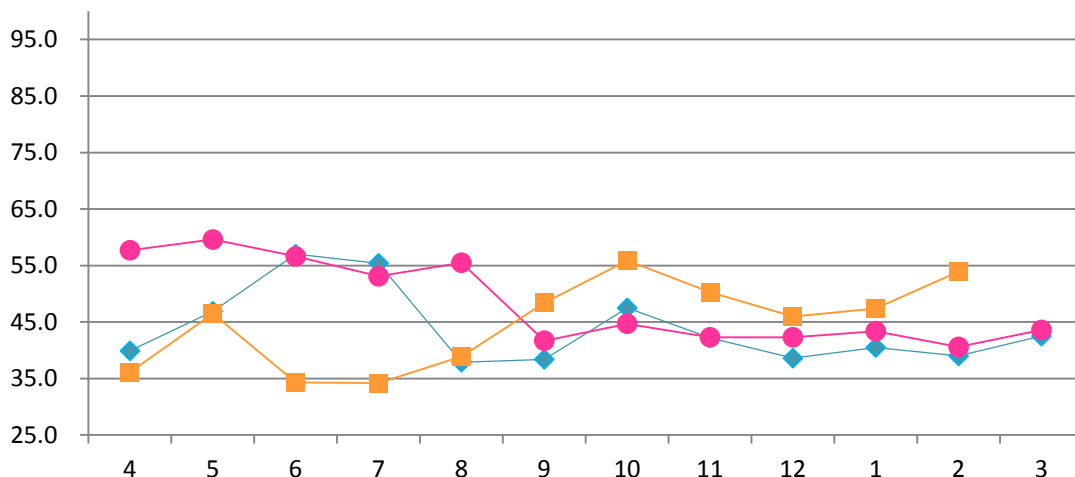
| 前期差 Comparison with the previous year | 前月差 Comparison with The previous month |
|---|--|
| 23.4 | 8.0 |

グラフ資料出所: 米国食肉輸出連合会
Source: U.S. Meat Export Federation

【米国産 肥育豚価格(生産者販売価格)】

Live U.S. Fattening Pig Prices (Pig Sales Price)

(セント/ポンド)
(US ¢/lb)



◆ 2019年3月期 FY 2019/3
● 2020年3月期 FY 2020/3
■ 2021年3月期 FY 2021/3

(セント/ポンド)
(US ¢/lb)

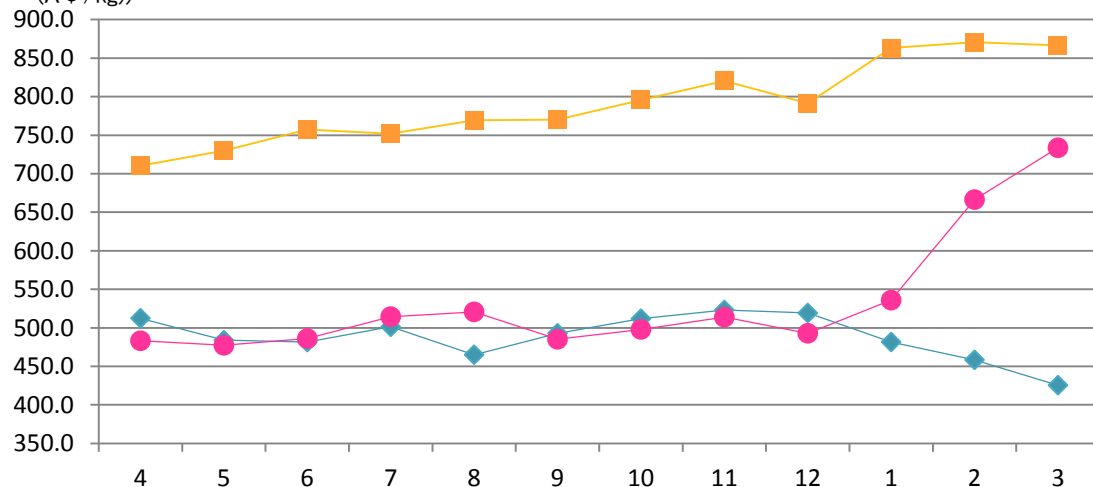
| 前期差 Comparison with the previous year | 前月差 Comparison with The previous month |
|---|--|
| 13.3 | 6.5 |

グラフ資料出所: 農畜産業振興機構 (全て単純平均単価)
Source: Agriculture & Livestock Industries Corporation (all graphs based on average prices)

【豪州産 若齢牛価格(生産者販売価格)】

Eastern Young Cattle Indicator (EYCI)

(豪セント/kg)
(A ¢/kg)



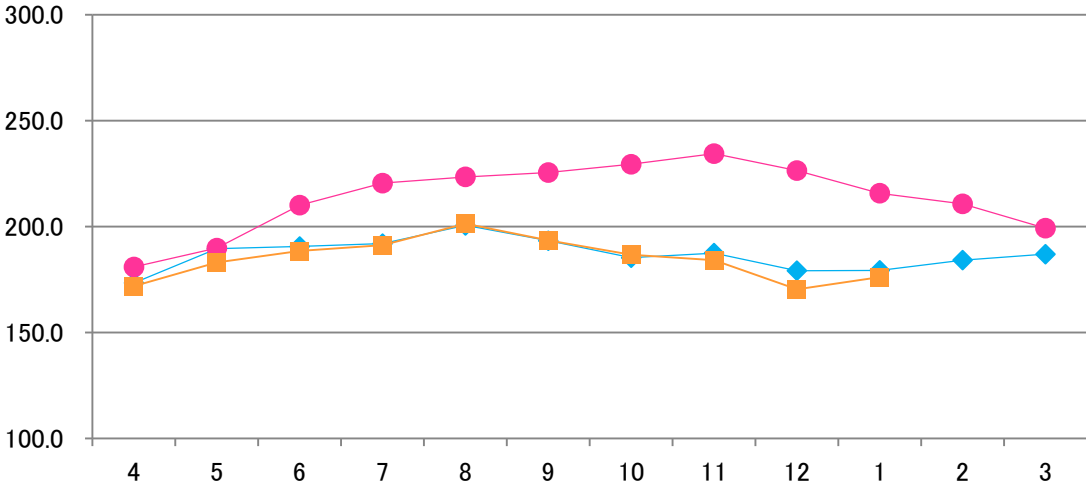
◆ 2019年3月期 FY 2019/3
● 2020年3月期 FY 2020/3
■ 2021年3月期 FY 2021/3

(豪セント/kg)
(A ¢/kg)

| 前期差 Comparison with the previous year | 前月差 Comparison with The previous month |
|---|--|
| 132.7 | -4.4 |

グラフ資料出所: 農畜産業振興機構 (全て単純平均単価)
Source: Agriculture & Livestock Industries Corporation (all graphs based on average prices)

【ウルグアイ 牛価格 生体ベース】
 Uruguay cattle prices, >380kg
 (ドル/100kg)
 (US \$/lwt)



◆ 2019年3月期 FY 2019/3
 ● 2020年3月期 FY 2020/3
 ■ 2021年3月期 FY 2021/3

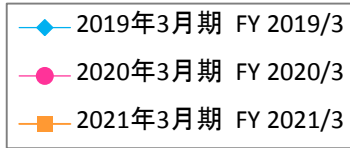
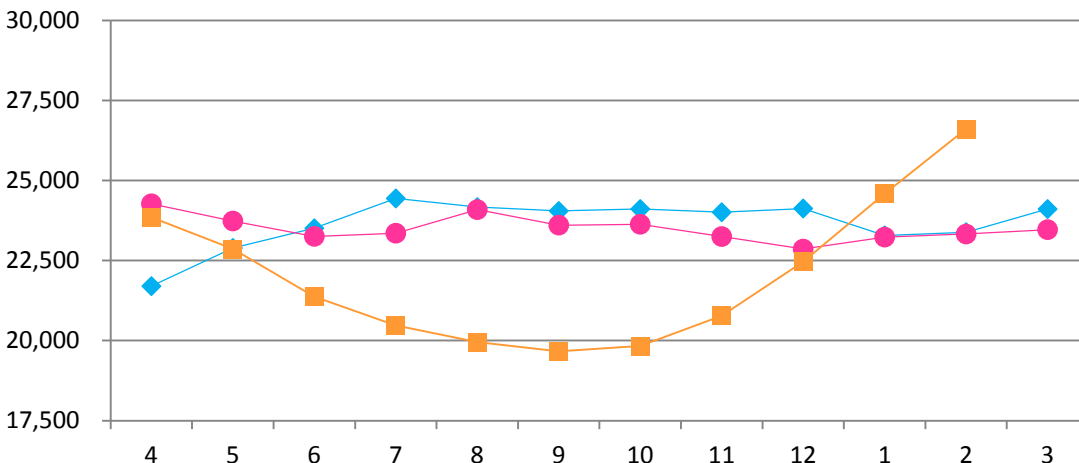
| (ドル/100kg) (US \$/lwt) | |
|---|--|
| 前期差 Comparison with the previous year | 前月差 Comparison with The previous month |
| -39.6 | 5.8 |

グラフ資料出所: 豪州食肉家畜生産者事業団
 Source: Meat & Livestock Australia Ltd

【とうもろこしの輸入価格】

Imported Corn Prices

(円/トン)
(¥/t)



(円/トン)
(¥/t)

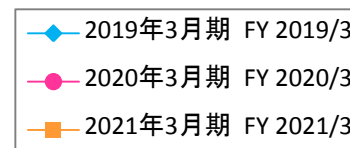
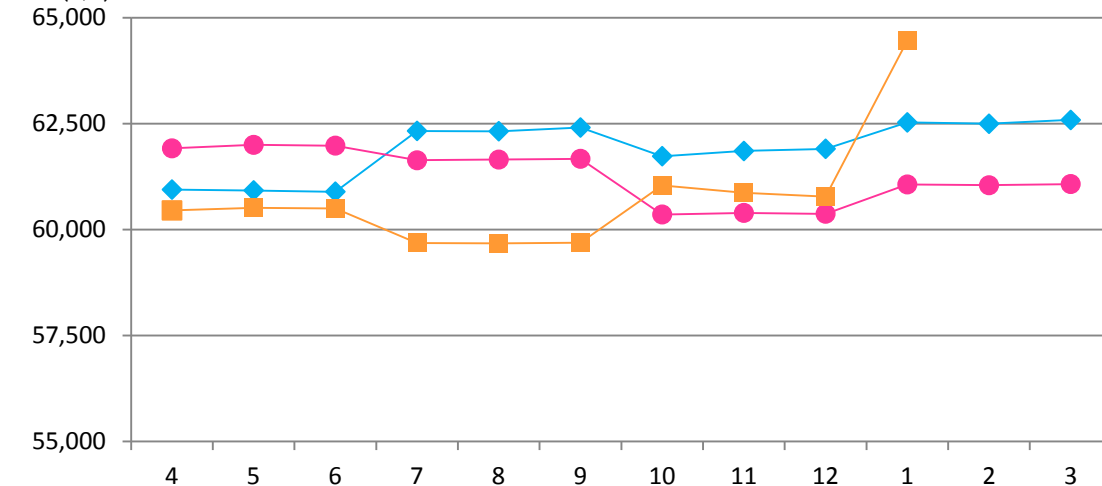
| 前期差 Comparison with the previous year | 前月差 Comparison with The previous month |
|---|--|
| 3,279 | 2,013 |

グラフ資料出所: 農畜産業振興機構 (全て単純平均単価)
Source: Agriculture & Livestock Industries Corporation (all graphs based on average prices)

【配合飼料の価格】

Mixed Feed Prices

(円/トン)
(¥/t)



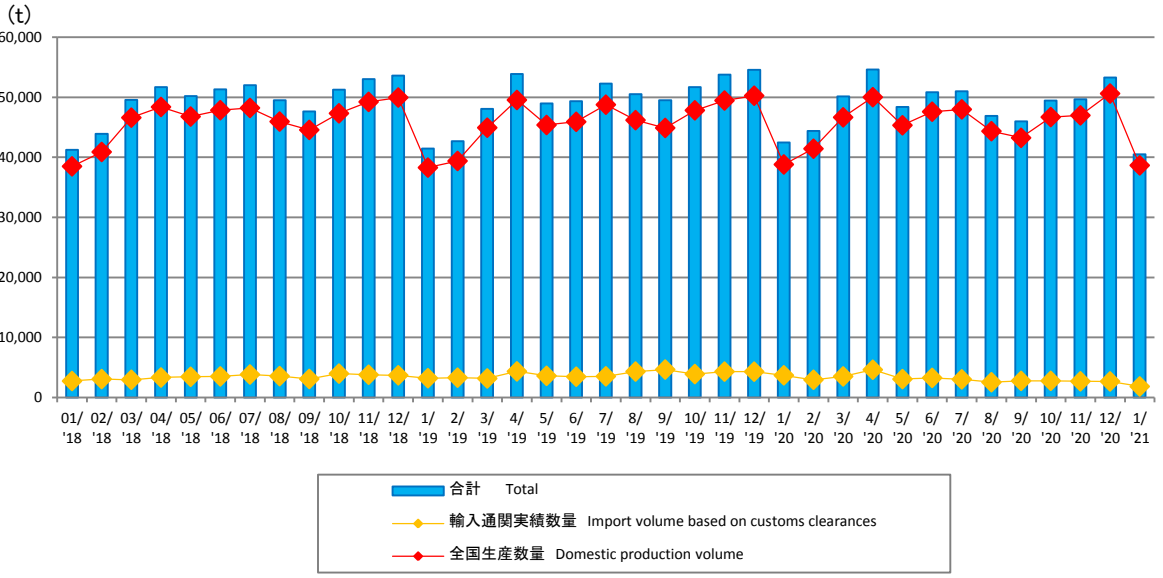
(円/トン)
(¥/t)

| 前期差 Comparison with the previous year | 前月差 Comparison with The previous month |
|---|--|
| 3,391 | 3,676 |

グラフ資料出所: 農畜産業振興機構 (全て単純平均単価)
Source: Agriculture & Livestock Industries Corporation (all graphs based on average prices)

【ハム・ソーセージ全国生産数量・輸入通関実績数量】

Production and Import Volume Based on Customs Clearances for Hams and Sausages

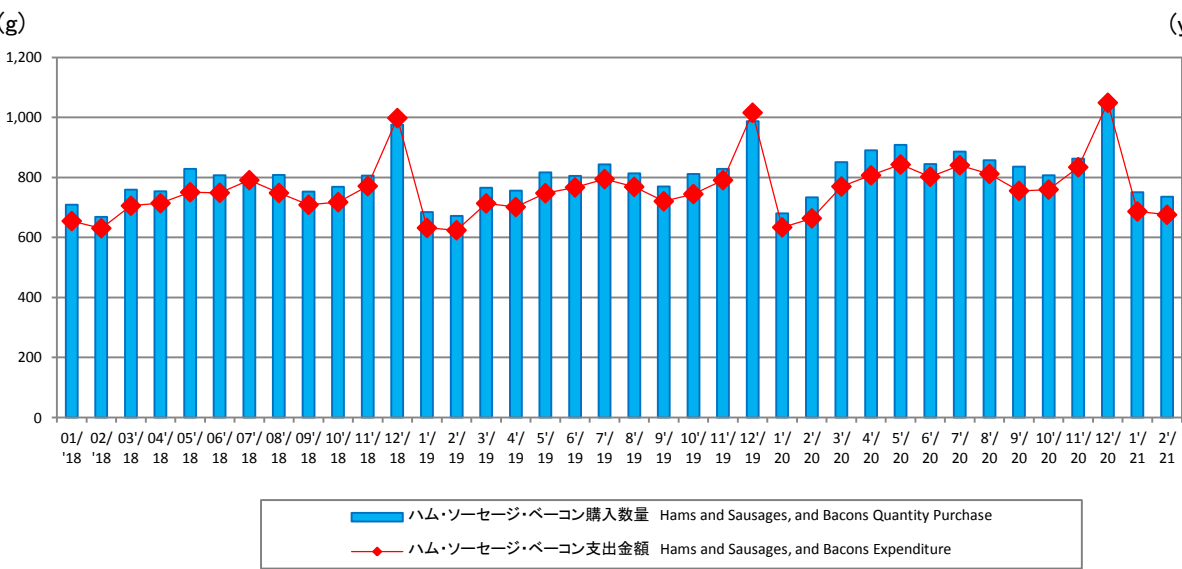


グラフ資料出所: 日本食肉加工協会
Source: Japan Meat Processor Association

| | 前期差 Comparison with The previous year | 前月差 Comparison with The previous month |
|--------------------|---|--|
| 輸入量 Imports | -1,858 | -840 |
| 生産数量 Production | -150 | -11,968 |

【家計調査 ハム・ソーセージ・ベーコン購入数量 / 支出金額】

Family Income and Expenditure Survey for Hams and Sausages, and Bacons



グラフ資料出所: 総務省「家計調査」
Source: Ministry of Internal Affairs and Communications "Family Income and Expenditure Survey"
二人以上の世帯(農林漁家世帯を除く)
Two-or-more-person Households (Not including agricultural, forestry and fisheries households)

| | 前期差 Comparison with The previous year | 前月差 Comparison with The previous month |
|---------------------------------|---|--|
| 購入数量(g) Quantity Purchase(g) | 2 | -15 |
| 支出金額(円) Expenditure (yen) | 20 | -18 |

○牛肉相場/Beef Prices (P2)

去勢和牛 A-3 (東京市場、税込、円/KG)/Tokyo Market A-3 Wagyu Steer Prices, Tax Included

出所: 東京食肉市場株式会社/Data Source: Tokyo Meat Market Co.Ltd (yen/kg)

| | Apr | May | Jun | Jul | Aug | Sep | Oct | Nov | Dec | Jan | Feb | Mar | Average |
|----------|-------|-------|-------|-------|-------|-------|-------|-------|-------|-------|-------|-------|---------|
| FY2019/3 | 2,157 | 2,147 | 2,145 | 2,166 | 2,208 | 2,273 | 2,301 | 2,461 | 2,526 | 2,326 | 2,306 | 2,278 | 2,275 |
| FY2020/3 | 2,262 | 2,220 | 2,235 | 2,220 | 2,175 | 2,196 | 2,181 | 2,175 | 2,011 | 2,053 | 1,907 | 1,666 | 2,108 |
| FY2021/3 | 1,518 | 1,618 | 1,671 | 1,844 | 1,849 | 1,915 | 2,157 | 2,322 | 2,387 | 2,294 | 2,228 | 2,415 | 2,018 |

豪州チルドビーフ ショートグレインフルセット(円/KG)/Australian Chilled Beef [Full Set (Short Grain Fed)] Prices

出所: 農畜産業振興機構(全て単純平均単価)/Data Source: Agriculture & Livestock Industries Corporation (all graphs based on average price) (yen/kg)

| | Apr | May | Jun | Jul | Aug | Sep | Oct | Nov | Dec | Jan | Feb | Mar | Average |
|----------|-------|-------|-------|-------|-------|-------|-------|-------|-------|-------|-------|-------|---------|
| FY2019/3 | 1,151 | 1,152 | 1,152 | 1,152 | 1,176 | 1,176 | 1,183 | 1,196 | 1,211 | 1,217 | 1,221 | 1,221 | 1,184 |
| FY2020/3 | 1,186 | 1,187 | 1,201 | 1,222 | 1,221 | 1,178 | 1,222 | 1,222 | 1,222 | 1,221 | 1,220 | 1,219 | 1,210 |
| FY2021/3 | 1,221 | 1,221 | 1,221 | 1,221 | 1,201 | 1,251 | 1,264 | 1,277 | 1,277 | 1,276 | 1,276 | 1,277 | 1,249 |

○豚肉相場/Pork Prices

豚肉枝肉卸売価格 上物 東京市場平均価格、税込(円/KG)/Pork Carcass Prices (Tokyo Market Excellent grade, monthly average, Tax Included)

出所: 東京食肉市場株式会社/Data Source: Tokyo Meat Market Co.Ltd (yen/kg)

| | Apr | May | Jun | Jul | Aug | Sep | Oct | Nov | Dec | Jan | Feb | Mar | Average |
|----------|-----|-----|-----|-----|-----|-----|-----|-----|-----|-----|-----|-----|---------|
| FY2019/3 | 473 | 620 | 588 | 651 | 616 | 513 | 461 | 439 | 445 | 448 | 489 | 477 | 518 |
| FY2020/3 | 538 | 606 | 589 | 562 | 561 | 553 | 501 | 455 | 509 | 452 | 434 | 482 | 520 |
| FY2021/3 | 611 | 630 | 624 | 641 | 634 | 621 | 536 | 530 | 536 | 496 | 499 | 479 | 570 |

US冷凍ウデ(ピクニック) (円/KG)/U.S. Frozen Pork (Picnic) Prices

※ピクニックとは部位の名前です。

出所: 農畜産業振興機構(全て単純平均単価)/Data Source: Agriculture & Livestock Industries Corporation (all graphs based on average price) (yen/kg)

| | Apr | May | Jun | Jul | Aug | Sep | Oct | Nov | Dec | Jan | Feb | Mar | Average |
|----------|-----|-----|-----|-----|-----|-----|-----|-----|-----|-----|-----|-----|---------|
| FY2019/3 | 545 | 530 | 549 | 536 | 526 | 495 | 490 | 483 | 474 | 467 | 471 | 476 | 504 |
| FY2020/3 | 515 | 507 | 503 | 491 | 493 | 488 | 486 | 488 | 504 | 506 | 502 | 488 | 498 |
| FY2021/3 | 477 | 490 | 492 | 482 | 485 | 483 | 479 | 478 | 476 | 455 | 455 | 465 | 476 |

○鶏肉相場/Chicken Prices (P6)

鶏肉卸売価格(モモ肉、税抜、円/KG)/Domestic Chicken Thigh Meat Wholesale Prices 出所: 食品産業新聞社畜産日報掲載分から単純平均単価

Data Source: "DAILY MEAT & LIVESTOCK" which is a trade business paper published in Japan (all graphs based on average price) (yen/kg)

| | Apr | May | Jun | Jul | Aug | Sep | Oct | Nov | Dec | Jan | Feb | Mar | Average |
|----------|-----|-----|-----|-----|-----|-----|-----|-----|-----|-----|-----|-----|---------|
| FY2019/3 | 618 | 590 | 573 | 565 | 545 | 563 | 573 | 580 | 633 | 658 | 650 | 647 | 600 |
| FY2020/3 | 617 | 603 | 568 | 548 | 525 | 525 | 525 | 545 | 594 | 616 | 598 | 580 | 570 |
| FY2021/3 | 578 | 608 | 609 | 592 | 588 | 602 | 634 | 655 | 685 | 710 | 700 | 693 | 638 |

鶏肉卸売価格(ムネ肉、税抜、円/KG)/Domestic Chicken Breast Meat Wholesale Prices 出所: 食品産業新聞社畜産日報掲載分から単純平均単価

Data Source: "DAILY MEAT & LIVESTOCK" which is a trade business paper published in Japan (all graphs based on average price) (yen/kg)

| | Apr | May | Jun | Jul | Aug | Sep | Oct | Nov | Dec | Jan | Feb | Mar | Average |
|----------|-----|-----|-----|-----|-----|-----|-----|-----|-----|-----|-----|-----|---------|
| FY2019/3 | 303 | 290 | 280 | 278 | 270 | 275 | 280 | 280 | 280 | 273 | 240 | 227 | 273 |
| FY2020/3 | 217 | 235 | 240 | 233 | 227 | 230 | 250 | 250 | 259 | 254 | 246 | 240 | 240 |
| FY2021/3 | 237 | 253 | 260 | 267 | 273 | 283 | 293 | 303 | 310 | 310 | 303 | 301 | 283 |

ブラジル もも肉価格(円/KG)/Brazilian Chicken Thigh Prices

出所: 食品産業新聞社畜産日報掲載分から単純平均単価

Data Source: "DAILY MEAT & LIVESTOCK" which is a trade business paper published in Japan (all graphs based on average price) (yen/kg)

| | Apr | May | Jun | Jul | Aug | Sep | Oct | Nov | Dec | Jan | Feb | Mar | Average |
|----------|-----|-----|-----|-----|-----|-----|-----|-----|-----|-----|-----|-----|---------|
| FY2019/3 | 270 | 280 | 353 | 411 | 353 | 303 | 285 | 292 | 328 | 340 | 340 | 338 | 324 |
| FY2020/3 | 355 | 360 | 365 | 360 | 312 | 305 | 288 | 300 | 300 | 296 | 288 | 274 | 317 |
| FY2021/3 | 260 | 260 | 250 | 237 | 235 | 232 | 235 | 240 | 240 | 240 | 220 | 230 | 240 |

○海外食肉相場/Market Trend in Overseas Cutout Value Prices(P10)

米国産 牛肉カットアウトバリュー 枝肉ベース (ドル/100ポンド)/U.S. Beef Boxed cutout, Choice 1-3, 600-900 lbs

出所: 米国食肉輸出連合会/Source: U.S. Meat Export Federation

(US\$/cwt)

| | Apr | May | Jun | Jul | Aug | Sep | Oct | Nov | Dec | Jan | Feb | Mar | Average |
|----------|-------|-------|-------|-------|-------|-------|-------|-------|-------|-------|-------|-------|---------|
| FY2019/3 | 215.3 | 229.3 | 221.0 | 206.3 | 209.2 | 206.1 | 208.2 | 214.6 | 213.6 | 215.0 | 217.8 | 227.5 | 215.3 |
| FY2020/3 | 230.3 | 223.6 | 221.3 | 214.8 | 230.2 | 221.4 | 219.7 | 235.5 | 217.2 | 211.9 | 207.6 | 228.1 | 221.8 |
| FY2021/3 | 241.9 | 405.8 | 242.3 | 203.2 | 216.7 | 220.6 | 212.4 | 228.0 | 217.8 | 216.7 | 236.5 | | 220.2 |

米国産 豚肉カットアウトバリュー 枝肉ベース (ドル/100ポンド)/U.S. Pork Cutout composite carcass, 53-54% lean

出所: 米国食肉輸出連合会/Source: U.S. Meat Export Federation

(US\$/cwt)

| | Apr | May | Jun | Jul | Aug | Sep | Oct | Nov | Dec | Jan | Feb | Mar | Average |
|----------|------|-------|------|------|------|------|------|------|------|------|------|------|---------|
| FY2019/3 | 68.0 | 73.9 | 83.3 | 81.1 | 68.4 | 75.0 | 78.6 | 81.1 | 71.6 | 69.4 | 62.8 | 72.4 | 73.8 |
| FY2020/3 | 84.7 | 85.1 | 80.3 | 77.4 | 83.7 | 71.0 | 76.4 | 83.4 | 79.2 | 74.7 | 64.9 | 72.8 | 77.8 |
| FY2021/3 | 65.8 | 105.8 | 68.5 | 67.9 | 72.1 | 84.8 | 94.1 | 81.2 | 75.2 | 80.3 | 88.3 | | 73.7 |

○海外生体相場/Market Trend in Overseas Livestock Prices(P11~12)

米国 肥育豚価格 (生産者販売価格、セント/ポンド)/Live U.S. Fattening Pig Prices (Pig sales price)

出所: 農畜産業振興機構(全て単純平均単価)/Source: Agriculture & Livestock Industries Corporation (all graphs based on average price (US\$/lb)

| | Apr | May | Jun | Jul | Aug | Sep | Oct | Nov | Dec | Jan | Feb | Mar | Average |
|----------|------|------|------|------|------|------|------|------|------|------|------|------|---------|
| FY2019/3 | 39.9 | 46.9 | 57.0 | 55.4 | 37.9 | 38.4 | 47.5 | 42.2 | 38.6 | 40.5 | 39.0 | 42.5 | 43.8 |
| FY2020/3 | 57.7 | 59.6 | 56.6 | 53.1 | 55.5 | 41.7 | 44.7 | 42.3 | 42.3 | 43.4 | 40.6 | 43.6 | 48.4 |
| FY2021/3 | 36.1 | 46.5 | 34.3 | 34.2 | 38.9 | 48.4 | 55.9 | 50.3 | 46.0 | 47.4 | 53.9 | | 41.0 |

豪州 若齢牛価格 (生産者販売価格、豪セント/KG)/Eastern Young Cattle Indicator (EYCI)

出所: 豪州食肉家畜生産者事業団/Source: Meat & Livestock Australia Ltd

(A\$/kg)

| | Apr | May | Jun | Jul | Aug | Sep | Oct | Nov | Dec | Jan | Feb | Mar | Average |
|----------|-------|-------|-------|-------|-------|-------|-------|-------|-------|-------|-------|-------|---------|
| FY2019/3 | 512.4 | 483.9 | 481.5 | 501.3 | 465.1 | 492.9 | 511.8 | 523.1 | 519.2 | 481.6 | 458.4 | 425.6 | 488.1 |
| FY2020/3 | 483.2 | 477.3 | 486.1 | 514.5 | 520.7 | 485.1 | 497.9 | 513.8 | 492.9 | 535.9 | 666.4 | 733.7 | 534.0 |
| FY2021/3 | 710.3 | 730.0 | 757.5 | 751.9 | 769.3 | 770.2 | 795.7 | 820.5 | 791.5 | 863.1 | 870.8 | 866.4 | 791.4 |

ウルグアイ 牛生体価格 生体ベース (ドル/100kg)/Uruguay Cattle Prices, >380kg

出所: 豪州食肉家畜生産者事業団/Source: Meat & Livestock Australia Ltd

(US\$/lwt)

| | Apr | May | Jun | Jul | Aug | Sep | Oct | Nov | Dec | Jan | Feb | Mar | Average |
|----------|-------|-------|-------|-------|-------|-------|-------|-------|-------|-------|-------|-------|---------|
| FY2019/3 | 173.5 | 189.6 | 190.6 | 192.0 | 200.6 | 193.4 | 185.4 | 187.6 | 179.2 | 179.4 | 184.2 | 187.0 | 186.9 |
| FY2020/3 | 181.0 | 189.9 | 210.2 | 220.6 | 223.5 | 225.6 | 229.5 | 234.5 | 226.5 | 215.8 | 210.8 | 199.3 | 213.9 |
| FY2021/3 | 171.9 | 183.2 | 188.5 | 191.3 | 201.4 | 193.6 | 186.7 | 184.2 | 170.4 | 176.2 | | | 184.7 |

○飼料価格相場/Market Trends in Grain Feed Prices(P13~14)

とうもろこしの輸入価格(円/トン)/Imported Corn Prices

出所:農畜産業振興機構(全て単純平均単価)/Source: Agriculture & Livestock Industries Corporation (all graphs based on average price) (yen/t)

| | Apr | May | Jun | Jul | Aug | Sep | Oct | Nov | Dec | Jan | Feb | Mar | Average |
|----------|--------|--------|--------|--------|--------|--------|--------|--------|--------|--------|--------|--------|---------|
| FY2019/3 | 21,701 | 22,893 | 23,508 | 24,440 | 24,168 | 24,049 | 24,110 | 24,010 | 24,127 | 23,287 | 23,386 | 24,109 | 23,649 |
| FY2020/3 | 24,274 | 23,736 | 23,256 | 23,355 | 24,091 | 23,607 | 23,633 | 23,250 | 22,860 | 23,234 | 23,329 | 23,466 | 23,508 |
| FY2021/3 | 23,853 | 22,861 | 21,375 | 20,473 | 19,955 | 19,665 | 19,830 | 20,774 | 22,466 | 24,595 | 26,608 | | 22,041 |

配合飼料の価格動向(円/トン)/Mixed Feed Prices

出所:農畜産業振興機構(全て単純平均単価)/Source: Agriculture & Livestock Industries Corporation (all graphs based on average price) (yen/t)

| | Apr | May | Jun | Jul | Aug | Sep | Oct | Nov | Dec | Jan | Feb | Mar | Average |
|----------|--------|--------|--------|--------|--------|--------|--------|--------|--------|--------|--------|--------|---------|
| FY2019/3 | 60,944 | 60,924 | 60,894 | 62,328 | 62,321 | 62,408 | 61,732 | 61,854 | 61,906 | 62,529 | 62,497 | 62,586 | 61,910 |
| FY2020/3 | 61,917 | 61,999 | 61,981 | 61,635 | 61,652 | 61,670 | 60,356 | 60,394 | 60,373 | 61,065 | 61,046 | 61,075 | 61,264 |
| FY2021/3 | 60,455 | 60,515 | 60,497 | 59,686 | 59,676 | 59,691 | 61,042 | 60,868 | 60,780 | 64,456 | | | 60,767 |

○牛肉需給動向/Beef(P3)

出所: 農畜産業振興機構

Notes:1.Boneless cuts equivalent

Source: Agriculture & Livestock Industries Corporation

2.Figures for stocks are estimated by ALIC

(t)

| FY 2019/3 | Apr | May | Jun | Jul | Aug | Sep | Oct | Nov | Dec | Jan | Feb | Mar | Total |
|-------------------------------------|--------|---------|---------|---------|---------|---------|---------|---------|---------|---------|---------|---------|---------|
| 供給量/Supplied Quantity | 90,885 | 80,543 | 73,646 | 95,559 | 83,510 | 77,708 | 80,200 | 86,010 | 78,441 | 75,433 | 64,981 | 65,626 | 952,542 |
| うち生産量/Production | 28,775 | 26,407 | 26,327 | 30,058 | 25,781 | 25,454 | 28,779 | 34,325 | 30,829 | 24,868 | 24,875 | 26,378 | 332,856 |
| うち輸入量/Imports | 62,110 | 54,136 | 47,319 | 65,501 | 57,729 | 52,254 | 51,421 | 51,685 | 47,612 | 50,565 | 40,106 | 39,248 | 619,686 |
| 推定出回り量/Estimated Marketing Quantity | 89,694 | 74,517 | 71,011 | 86,244 | 75,608 | 77,971 | 79,347 | 83,107 | 83,977 | 72,814 | 64,721 | 71,357 | 930,368 |
| うち国産品/Domestic | 28,976 | 26,421 | 26,014 | 29,789 | 25,493 | 24,258 | 28,570 | 33,022 | 31,015 | 25,232 | 24,678 | 26,350 | 329,818 |
| うち輸入品/Imported | 60,718 | 48,096 | 44,997 | 56,455 | 50,115 | 53,713 | 50,777 | 50,085 | 52,962 | 47,582 | 40,043 | 45,007 | 600,550 |
| 推定期末在庫/Estimated Ending Stock | 98,488 | 104,243 | 106,611 | 115,645 | 123,281 | 122,731 | 123,268 | 125,754 | 119,768 | 122,130 | 122,055 | 115,940 | - |
| うち国産品/Domestic | 9,026 | 8,741 | 8,787 | 8,775 | 8,797 | 9,706 | 9,599 | 10,485 | 9,849 | 9,228 | 9,090 | 8,734 | - |
| うち輸入品/Imported | 89,462 | 95,502 | 97,824 | 106,870 | 114,484 | 113,025 | 113,669 | 115,269 | 109,919 | 112,902 | 112,965 | 107,206 | - |

(t)

| FY 2020/3 | Apr | May | Jun | Jul | Aug | Sep | Oct | Nov | Dec | Jan | Feb | Mar | Total |
|-------------------------------------|---------|---------|---------|---------|---------|---------|---------|---------|---------|---------|---------|---------|---------|
| 供給量/Supplied Quantity | 96,568 | 74,282 | 72,592 | 93,037 | 78,159 | 76,678 | 83,612 | 80,646 | 83,470 | 73,213 | 66,584 | 73,149 | 951,990 |
| うち生産量/Production | 29,292 | 25,719 | 25,308 | 30,506 | 24,602 | 26,144 | 28,234 | 33,361 | 30,355 | 25,803 | 24,758 | 25,572 | 329,654 |
| うち輸入量/Imports | 67,276 | 48,563 | 47,284 | 62,531 | 53,557 | 50,534 | 55,378 | 47,285 | 53,115 | 47,410 | 41,826 | 47,577 | 622,336 |
| 推定出回り量/Estimated Marketing Quantity | 94,950 | 71,450 | 67,882 | 84,957 | 78,880 | 76,157 | 81,831 | 88,627 | 88,108 | 66,511 | 69,669 | 67,927 | 936,949 |
| うち国産品/Domestic | 28,264 | 26,094 | 24,244 | 30,997 | 23,942 | 25,768 | 26,022 | 33,275 | 27,789 | 27,716 | 24,553 | 24,871 | 323,535 |
| うち輸入品/Imported | 66,686 | 45,356 | 43,638 | 53,960 | 54,938 | 50,389 | 55,809 | 55,352 | 60,319 | 38,795 | 45,116 | 43,056 | 613,414 |
| 推定期末在庫/Estimated Ending Stock | 117,194 | 119,759 | 124,128 | 131,898 | 130,761 | 130,894 | 132,306 | 123,915 | 118,780 | 125,264 | 121,874 | 126,843 | - |
| うち国産品/Domestic | 9,398 | 8,756 | 9,479 | 8,678 | 8,922 | 8,910 | 10,753 | 10,429 | 12,498 | 10,367 | 10,267 | 10,715 | - |
| うち輸入品/Imported | 107,796 | 111,003 | 114,649 | 123,220 | 121,839 | 121,984 | 121,553 | 113,486 | 106,282 | 114,897 | 111,607 | 116,128 | - |

(t)

| FY 2021/3 | Apr | May | Jun | Jul | Aug | Sep | Oct | Nov | Dec | Jan | Feb | Mar | Total |
|-------------------------------------|---------|---------|---------|---------|---------|---------|---------|---------|---------|---------|---------|-----|---------|
| 供給量/Supplied Quantity | 96,131 | 75,284 | 78,534 | 83,300 | 72,895 | 71,368 | 80,386 | 83,159 | 80,534 | 68,883 | 61,732 | | 852,206 |
| うち生産量/Production | 27,096 | 25,244 | 27,825 | 30,660 | 25,688 | 27,110 | 29,433 | 33,750 | 31,285 | 24,878 | 24,445 | | 307,414 |
| うち輸入量/Imports | 69,035 | 50,040 | 50,709 | 52,640 | 47,207 | 44,258 | 50,953 | 49,409 | 49,249 | 44,005 | 37,287 | | 544,792 |
| 推定出回り量/Estimated Marketing Quantity | 80,730 | 69,267 | 78,404 | 86,251 | 74,014 | 77,368 | 82,645 | 88,136 | 83,050 | 66,677 | 62,587 | | 849,129 |
| うち国産品/Domestic | 26,062 | 24,966 | 28,339 | 30,503 | 25,328 | 26,082 | 28,754 | 32,729 | 29,877 | 24,572 | 23,514 | | 300,726 |
| うち輸入品/Imported | 54,668 | 44,301 | 50,065 | 55,748 | 48,686 | 51,286 | 53,891 | 55,407 | 53,173 | 42,105 | 39,073 | | 548,403 |
| 推定期末在庫/Estimated Ending Stock | 141,987 | 147,770 | 147,453 | 144,076 | 142,505 | 136,001 | 133,096 | 127,612 | 124,502 | 126,325 | 125,067 | | - |
| うち国産品/Domestic | 11,492 | 11,536 | 10,575 | 10,306 | 10,214 | 10,738 | 10,771 | 11,285 | 12,099 | 12,022 | 12,550 | | - |
| うち輸入品/Imported | 130,495 | 136,234 | 136,878 | 133,770 | 132,291 | 125,263 | 122,325 | 116,327 | 112,403 | 114,303 | 112,517 | | - |

○豚肉需給動向/Pork (P5)

出所：農畜産業振興機構

Notes:1.Boneless cuts equivalent

Source: Agriculture & Livestock Industries Corporation

2.Figures for stocks are estimated by ALIC (t)

| FY 2019/3 | Apr | May | Jun | Jul | Aug | Sep | Oct | Nov | Dec | Jan | Feb | Mar | Total |
|-------------------------------------|---------|---------|---------|---------|---------|---------|---------|---------|---------|---------|---------|---------|-----------|
| 供給量/Supplied Quantity | 155,640 | 156,379 | 146,250 | 146,793 | 149,789 | 136,647 | 166,031 | 165,599 | 152,484 | 141,180 | 154,228 | 142,661 | 1,813,681 |
| うち生産量/Production | 75,496 | 76,152 | 69,573 | 68,709 | 70,135 | 67,675 | 82,052 | 82,253 | 79,338 | 79,477 | 72,590 | 74,058 | 897,508 |
| うち輸入量/Imports | 80,144 | 80,227 | 76,677 | 78,084 | 79,654 | 68,972 | 83,979 | 83,346 | 73,146 | 61,703 | 81,638 | 68,603 | 916,173 |
| 推定出回り量/Estimated Marketing Quantity | 158,559 | 154,017 | 147,959 | 149,228 | 149,734 | 145,081 | 167,624 | 168,017 | 155,468 | 137,627 | 151,121 | 143,020 | 1,827,455 |
| うち国産品/Domestic | 77,128 | 75,842 | 71,104 | 68,762 | 69,223 | 67,772 | 81,863 | 81,924 | 78,307 | 79,203 | 72,334 | 72,588 | 896,050 |
| うち輸入品/Imported | 81,431 | 78,175 | 76,855 | 80,466 | 80,511 | 77,309 | 85,761 | 86,093 | 77,161 | 58,424 | 78,787 | 70,432 | 931,405 |
| 推定期末在庫/Estimated Ending Stock | 177,966 | 180,286 | 178,521 | 176,037 | 176,030 | 167,559 | 165,907 | 163,417 | 160,361 | 163,889 | 166,915 | 166,489 | - |
| うち国産品/Domestic | 18,753 | 19,021 | 17,434 | 17,332 | 18,182 | 18,048 | 18,178 | 18,435 | 19,394 | 19,643 | 19,818 | 21,221 | - |
| うち輸入品/Imported | 159,213 | 161,265 | 161,087 | 158,705 | 157,848 | 149,511 | 147,729 | 144,982 | 140,967 | 144,246 | 147,097 | 145,268 | - |

| FY 2020/3 | Apr | May | Jun | Jul | Aug | Sep | Oct | Nov | Dec | Jan | Feb | Mar | Total |
|-------------------------------------|---------|---------|---------|---------|---------|---------|---------|---------|---------|---------|---------|---------|-----------|
| 供給量/Supplied Quantity | 176,023 | 159,650 | 143,295 | 160,214 | 152,727 | 146,955 | 163,052 | 160,249 | 153,148 | 153,144 | 140,412 | 147,163 | 1,856,032 |
| うち生産量/Production | 77,788 | 75,254 | 67,049 | 74,899 | 67,745 | 68,830 | 79,112 | 77,534 | 80,884 | 80,864 | 73,425 | 79,535 | 902,919 |
| うち輸入量/Imports | 98,235 | 84,396 | 76,246 | 85,315 | 84,982 | 78,125 | 83,940 | 82,715 | 72,264 | 72,280 | 66,987 | 67,628 | 953,113 |
| 推定出回り量/Estimated Marketing Quantity | 152,687 | 142,740 | 142,547 | 153,084 | 146,276 | 149,435 | 162,201 | 166,197 | 163,753 | 146,161 | 141,397 | 145,073 | 1,811,551 |
| うち国産品/Domestic | 76,406 | 76,085 | 65,290 | 76,348 | 68,891 | 69,036 | 79,247 | 75,817 | 81,783 | 80,150 | 71,714 | 77,478 | 898,245 |
| うち輸入品/Imported | 76,281 | 66,655 | 77,257 | 76,736 | 77,385 | 80,399 | 82,954 | 90,380 | 81,970 | 66,011 | 69,683 | 67,595 | 913,306 |
| 推定期末在庫/Estimated Ending Stock | 189,766 | 206,606 | 207,284 | 214,359 | 220,743 | 218,205 | 218,968 | 212,979 | 202,275 | 209,212 | 208,119 | 210,137 | - |
| うち国産品/Domestic | 22,544 | 21,643 | 23,332 | 21,828 | 20,615 | 20,351 | 20,128 | 21,804 | 20,806 | 21,474 | 23,077 | 25,062 | - |
| うち輸入品/Imported | 167,222 | 184,963 | 183,952 | 192,531 | 200,128 | 197,854 | 198,840 | 191,175 | 181,469 | 187,738 | 185,042 | 185,075 | - |

| FY 2021/3 | Apr | May | Jun | Jul | Aug | Sep | Oct | Nov | Dec | Jan | Feb | Mar | Total |
|-------------------------------------|---------|---------|---------|---------|---------|---------|---------|---------|---------|---------|---------|-----|-----------|
| 供給量/Supplied Quantity | 181,807 | 151,182 | 152,057 | 148,978 | 136,610 | 137,202 | 152,571 | 149,903 | 154,029 | 145,420 | 137,857 | | 1,647,616 |
| うち生産量/Production | 80,239 | 71,318 | 72,535 | 73,967 | 68,179 | 71,786 | 80,156 | 79,406 | 82,555 | 78,800 | 73,648 | | 832,589 |
| うち輸入量/Imports | 101,568 | 79,864 | 79,522 | 75,011 | 68,431 | 65,416 | 72,415 | 70,497 | 71,474 | 66,620 | 64,209 | | 815,027 |
| 推定出回り量/Estimated Marketing Quantity | 167,907 | 139,324 | 152,572 | 158,510 | 141,115 | 144,946 | 161,334 | 158,952 | 160,519 | 151,043 | 136,010 | | 1,672,232 |
| うち国産品/Domestic | 82,085 | 73,523 | 70,031 | 75,708 | 69,117 | 72,409 | 80,388 | 79,178 | 81,364 | 76,657 | 73,069 | | 833,529 |
| うち輸入品/Imported | 85,822 | 65,801 | 82,541 | 82,802 | 71,998 | 72,537 | 80,946 | 79,774 | 79,155 | 74,386 | 62,941 | | 838,703 |
| 推定期末在庫/Estimated Ending Stock | 223,945 | 235,742 | 235,073 | 225,452 | 220,847 | 213,071 | 204,188 | 194,989 | 188,311 | 182,564 | 184,274 | | - |
| うち国産品/Domestic | 23,124 | 20,858 | 23,208 | 21,378 | 20,340 | 19,685 | 19,333 | 19,411 | 20,414 | 22,433 | 22,875 | | - |
| うち輸入品/Imported | 200,821 | 214,884 | 211,865 | 204,074 | 200,507 | 193,386 | 184,855 | 175,578 | 167,897 | 160,131 | 161,399 | | - |

○鶏肉需給動向(P7)

出所:農畜産業振興機構

Notes:1.Bone in cuts equivalent

注:数量は骨付き肉ベース。成鶏肉を含む。輸入量には鶏肉以外の家禽肉を含まない。

2.Figures for stocks are estimated by ALIC

Source: Agriculture & Livestock Industries Corporation

3.The production quantity and the estimate (t)

| FY 2019/3 | Apr | May | Jun | Jul | Aug | Sep | Oct | Nov | Dec | Jan | Feb | Mar | Total |
|-------------------------------------|---------|---------|---------|---------|---------|---------|---------|---------|---------|---------|---------|---------|-----------|
| 供給量/Supplied Quantity | 182,247 | 183,714 | 177,979 | 173,722 | 175,962 | 164,315 | 195,306 | 180,559 | 194,241 | 172,027 | 170,244 | 174,431 | 2,144,746 |
| うち生産量/Production | 132,678 | 136,573 | 134,085 | 128,051 | 125,158 | 124,069 | 140,895 | 137,380 | 147,236 | 130,051 | 128,790 | 134,857 | 1,599,823 |
| うち輸入量/Imports | 49,569 | 47,141 | 43,894 | 45,671 | 50,804 | 40,246 | 54,411 | 43,179 | 47,005 | 41,976 | 41,454 | 39,574 | 544,923 |
| 推定出回り量/Estimated Marketing Quantity | 188,085 | 181,386 | 184,986 | 171,807 | 174,951 | 170,473 | 191,343 | 181,151 | 201,032 | 169,277 | 173,494 | 180,985 | 2,168,969 |
| うち国産品/Domestic | 135,183 | 131,793 | 135,519 | 128,867 | 124,716 | 125,158 | 139,768 | 137,903 | 149,589 | 128,657 | 127,400 | 136,047 | 1,600,600 |
| うち輸入品/Imported | 52,902 | 49,593 | 49,467 | 42,940 | 50,235 | 45,315 | 51,575 | 43,248 | 51,443 | 40,620 | 46,094 | 44,938 | 568,369 |
| 推定期末在庫/Estimated Ending Stock | 170,714 | 173,042 | 166,035 | 167,950 | 168,961 | 162,803 | 166,766 | 166,174 | 159,383 | 162,133 | 158,883 | 152,329 | - |
| うち国産品/Domestic | 25,924 | 30,704 | 29,270 | 28,454 | 28,896 | 27,807 | 28,934 | 28,411 | 26,058 | 27,452 | 28,842 | 27,652 | - |
| うち輸入品/Imported | 144,790 | 142,338 | 136,765 | 139,496 | 140,065 | 134,996 | 137,832 | 137,763 | 133,325 | 134,681 | 130,041 | 124,677 | - |

| FY 2020/3 | Apr | May | Jun | Jul | Aug | Sep | Oct | Nov | Dec | Jan | Feb | Mar | Total |
|-------------------------------------|---------|---------|---------|---------|---------|---------|---------|---------|---------|---------|---------|---------|-----------|
| 供給量/Supplied Quantity | 184,452 | 184,545 | 177,407 | 188,797 | 179,770 | 181,521 | 194,242 | 190,903 | 196,395 | 179,031 | 180,619 | 184,824 | 2,222,507 |
| うち生産量/Production | 137,186 | 137,972 | 134,042 | 135,585 | 129,253 | 127,912 | 142,651 | 142,075 | 151,473 | 137,411 | 136,700 | 138,129 | 1,650,389 |
| うち輸入量/Imports | 47,266 | 46,573 | 43,365 | 53,212 | 50,517 | 53,609 | 51,591 | 48,828 | 44,922 | 41,620 | 43,919 | 46,695 | 572,118 |
| 推定出回り量/Estimated Marketing Quantity | 183,618 | 184,930 | 176,590 | 185,782 | 179,421 | 174,134 | 191,414 | 191,885 | 200,780 | 174,731 | 179,016 | 182,087 | 2,204,389 |
| うち国産品/Domestic | 134,093 | 138,030 | 134,152 | 137,117 | 129,562 | 126,770 | 143,230 | 142,799 | 151,874 | 136,264 | 136,241 | 136,788 | 1,646,920 |
| うち輸入品/Imported | 49,525 | 46,900 | 42,438 | 48,665 | 49,859 | 47,364 | 48,184 | 49,086 | 48,906 | 38,467 | 42,775 | 45,299 | 557,469 |
| 推定期末在庫/Estimated Ending Stock | 153,163 | 152,778 | 153,595 | 156,610 | 156,959 | 164,346 | 167,174 | 166,192 | 161,807 | 166,107 | 167,710 | 170,447 | - |
| うち国産品/Domestic | 30,745 | 30,687 | 30,577 | 29,045 | 28,736 | 29,878 | 29,299 | 28,575 | 28,174 | 29,321 | 29,780 | 31,121 | - |
| うち輸入品/Imported | 122,418 | 122,091 | 123,018 | 127,565 | 128,223 | 134,468 | 137,875 | 137,617 | 133,633 | 136,786 | 137,930 | 139,326 | - |

| FY 2021/3 | Apr | May | Jun | Jul | Aug | Sep | Oct | Nov | Dec | Jan | Feb | Mar | Total |
|-------------------------------------|---------|---------|---------|---------|---------|---------|---------|---------|---------|---------|---------|-----|-----------|
| 供給量/Supplied Quantity | 188,018 | 172,357 | 189,190 | 189,917 | 168,373 | 173,495 | 194,809 | 185,789 | 196,273 | 182,390 | 177,806 | | 2,018,418 |
| うち生産量/Production | 141,312 | 136,238 | 138,537 | 138,339 | 128,060 | 132,019 | 146,914 | 140,480 | 153,562 | 133,460 | 132,292 | | 1,521,213 |
| うち輸入量/Imports | 46,706 | 36,119 | 50,653 | 51,578 | 40,313 | 41,476 | 47,895 | 45,309 | 42,711 | 48,930 | 45,514 | | 497,205 |
| 推定出回り量/Estimated Marketing Quantity | 186,763 | 174,691 | 187,772 | 190,554 | 171,390 | 174,413 | 200,076 | 189,036 | 202,882 | 177,450 | 176,629 | | 2,031,657 |
| うち国産品/Domestic | 145,231 | 142,335 | 141,090 | 127,369 | 129,603 | 132,222 | 147,884 | 140,860 | 153,149 | 133,787 | 131,290 | | 1,524,820 |
| うち輸入品/Imported | 41,532 | 32,356 | 46,682 | 63,185 | 41,787 | 42,191 | 52,192 | 48,176 | 49,733 | 43,663 | 45,339 | | 506,837 |
| 推定期末在庫/Estimated Ending Stock | 171,702 | 169,368 | 170,786 | 170,149 | 167,132 | 166,214 | 160,947 | 157,700 | 151,091 | 156,031 | 157,208 | | - |
| うち国産品/Domestic | 27,202 | 21,105 | 18,552 | 29,522 | 27,979 | 27,776 | 26,806 | 26,426 | 26,839 | 26,512 | 27,514 | | - |
| うち輸入品/Imported | 144,500 | 148,263 | 152,234 | 140,627 | 139,153 | 138,438 | 134,141 | 131,274 | 124,252 | 129,519 | 129,694 | | - |

○ハムソーセージ需給動向/Hams and Sausages (P15)

FY 2019/3

(t)

| | Apr | May | Jun | Jul | Aug | Sep | Oct | Nov | Dec | Jan | Feb | Mar | Total |
|----------------------|--------|--------|--------|--------|--------|--------|--------|--------|--------|--------|--------|--------|---------|
| 国内生産量/Production | 48,395 | 46,796 | 47,852 | 48,230 | 45,960 | 44,571 | 47,332 | 49,239 | 49,962 | 38,293 | 39,391 | 44,937 | 550,958 |
| 輸入量/Imports | 3,312 | 3,433 | 3,491 | 3,814 | 3,547 | 3,070 | 3,966 | 3,773 | 3,679 | 3,195 | 3,286 | 3,154 | 41,721 |
| 合計/Supplied Quantity | 51,707 | 50,229 | 51,343 | 52,044 | 49,507 | 47,641 | 51,298 | 53,012 | 53,641 | 41,488 | 42,677 | 48,091 | 592,679 |

FY 2020/3

(t)

| | Apr | May | Jun | Jul | Aug | Sep | Oct | Nov | Dec | Jan | Feb | Mar | Total |
|----------------------|--------|--------|--------|--------|--------|--------|--------|--------|--------|--------|--------|--------|---------|
| 国内生産量/Production | 49,558 | 45,393 | 45,920 | 48,773 | 46,197 | 44,899 | 47,831 | 49,466 | 50,268 | 38,811 | 41,439 | 46,669 | 555,224 |
| 輸入量/Imports | 4,333 | 3,590 | 3,443 | 3,505 | 4,308 | 4,641 | 3,889 | 4,297 | 4,287 | 3,681 | 2,936 | 3,491 | 46,401 |
| 合計/Supplied Quantity | 53,891 | 48,983 | 49,363 | 52,278 | 50,505 | 49,540 | 51,720 | 53,763 | 54,555 | 42,492 | 44,375 | 50,160 | 601,625 |

FY 2021/3

(t)

| | Apr | May | Jun | Jul | Aug | Sep | Oct | Nov | Dec | Jan | Feb | Mar | Total |
|----------------------|--------|--------|--------|--------|--------|--------|--------|--------|--------|--------|-----|-----|---------|
| 国内生産量/Production | 50,025 | 45,342 | 47,604 | 47,990 | 44,362 | 43,251 | 46,711 | 46,991 | 50,629 | 38,661 | | | 461,566 |
| 輸入量/Imports | 4,610 | 3,049 | 3,247 | 3,004 | 2,529 | 2,751 | 2,757 | 2,678 | 2,663 | 1,823 | | | 29,111 |
| 合計/Supplied Quantity | 54,635 | 48,391 | 50,851 | 50,994 | 46,891 | 46,002 | 49,468 | 49,669 | 53,292 | 40,484 | | | 490,677 |

○乳製品相場/Dairy Products (P8)

脱脂粉乳(CIF、その他、円/kg)/Skim milk(CIF, others purchase price)

出所: 農畜産業振興機構(全て単純平均金単価)/Source: Agriculture & Livestock Industries Corporation (all graphs based on average price (yen/kg))

| | Apr | May | Jun | Jul | Aug | Sep | Oct | Nov | Dec | Jan | Feb | Mar | Average |
|-----------|-----|-----|-----|-----|-----|-----|-----|-----|-----|-----|-----|-----|---------|
| FY 2021/3 | 357 | 361 | 347 | 359 | 288 | 422 | 284 | 279 | 309 | 287 | 271 | | 324 |

ナチュラルチーズ(CIF、円/kg)/Natural cheese(CIF)

出所: 農畜産業振興機構(全て単純平均金単価)/Source: Agriculture & Livestock Industries Corporation (all graphs based on average price (yen/kg))

| | Apr | May | Jun | Jul | Aug | Sep | Oct | Nov | Dec | Jan | Feb | Mar | Average |
|-----------|-----|-----|-----|-----|-----|-----|-----|-----|-----|-----|-----|-----|---------|
| FY 2019/3 | 485 | 488 | 487 | 482 | 487 | 491 | 510 | 490 | 508 | 496 | 478 | 486 | 491 |
| FY 2020/3 | 469 | 475 | 474 | 460 | 453 | 460 | 462 | 478 | 479 | 471 | 476 | 479 | 470 |
| FY 2021/3 | 458 | 452 | 475 | 463 | 464 | 465 | 452 | 449 | 455 | 447 | 460 | | 458 |

○「家計調査」購入数量/Family Income and Expenditure Survey:Quantity Purchase (P9,15)

出所:総務省「家計調査」

Source:Ministry of Internal Affairs and Communications "Family Income and Expenditure Survey"

Two-or-more-person Households (Not including agricultural, forestry and fisheries households)

(g)

| 2019 | Jan | Feb | Mar | Apr | May | Jun | Jul | Aug | Sep | Oct | Nov | Dec |
|---|-------|-------|-------|-------|-------|-------|-------|-------|-------|-------|-------|-------|
| ハム・ソーセージ・ベーコン購入数量/Hams and Sausages, and Bacons | 685 | 672 | 766 | 756 | 817 | 805 | 843 | 814 | 770 | 811 | 829 | 987 |
| 牛肉購入数量/Beef | 548 | 492 | 571 | 521 | 560 | 525 | 522 | 558 | 484 | 478 | 561 | 738 |
| 豚肉購入数量/Pork | 1,871 | 1,715 | 1,876 | 1,720 | 1,704 | 1,768 | 1,720 | 1,630 | 1,698 | 1,808 | 1,784 | 1,884 |
| 鶏肉購入数量/Chicken | 1,429 | 1,397 | 1,428 | 1,365 | 1,418 | 1,437 | 1,298 | 1,244 | 1,343 | 1,483 | 1,452 | 1,625 |

| 2020 | Jan | Feb | Mar | Apr | May | Jun | Jul | Aug | Sep | Oct | Nov | Dec |
|---|-------|-------|-------|-------|-------|-------|-------|-------|-------|-------|-------|-------|
| ハム・ソーセージ・ベーコン購入数量/Hams and Sausages, and Bacons | 680 | 734 | 851 | 890 | 908 | 845 | 886 | 857 | 836 | 807 | 863 | 1,037 |
| 牛肉購入数量/Beef | 505 | 522 | 600 | 655 | 719 | 564 | 569 | 613 | 528 | 577 | 563 | 784 |
| 豚肉購入数量/Pork | 1,737 | 1,810 | 2,044 | 2,058 | 2,024 | 1,881 | 1,845 | 1,827 | 1,769 | 1,915 | 1,920 | 2,143 |
| 鶏肉購入数量/Chicken | 1,358 | 1,402 | 1,617 | 1,805 | 1,716 | 1,599 | 1,530 | 1,473 | 1,401 | 1,538 | 1,498 | 1,839 |

| 2021 | Jan | Feb | Mar | Apr | May | Jun | Jul | Aug | Sep | Oct | Nov | Dec |
|---|-------|-------|-----|-----|-----|-----|-----|-----|-----|-----|-----|-----|
| ハム・ソーセージ・ベーコン購入数量/Hams and Sausages, and Bacons | 751 | 734 | | | | | | | | | | |
| 牛肉購入数量/Beef | 581 | 525 | | | | | | | | | | |
| 豚肉購入数量/Pork | 1,989 | 1,800 | | | | | | | | | | |
| 鶏肉購入数量/Chicken | 1,582 | 1,428 | | | | | | | | | | |

○「家計調査」支出金額/Family Income and Expenditure Survey:Expenditure (P9,15)

出所:総務省「家計調査」

(yen)

| 2019 | Jan | Feb | Mar | Apr | May | Jun | Jul | Aug | Sep | Oct | Nov | Dec |
|---|-------|-------|-------|-------|-------|-------|-------|-------|-------|-------|-------|-------|
| ハム・ソーセージ・ベーコン支出金額/Hams and Sausages, and Bacons | 1,053 | 1,040 | 1,189 | 1,169 | 1,246 | 1,278 | 1,324 | 1,281 | 1,201 | 1,241 | 1,318 | 1,693 |
| 牛肉支出金額/Beef | 1,810 | 1,515 | 1,671 | 1,682 | 1,777 | 1,625 | 1,518 | 1,853 | 1,560 | 1,522 | 1,649 | 2,996 |
| 豚肉支出金額/Pork | 2,592 | 2,425 | 2,538 | 2,394 | 2,393 | 2,408 | 2,358 | 2,335 | 2,438 | 2,555 | 2,516 | 2,685 |
| 鶏肉支出金額/Chicken | 1,348 | 1,298 | 1,332 | 1,271 | 1,296 | 1,268 | 1,185 | 1,121 | 1,242 | 1,312 | 1,309 | 1,605 |

| 2020 | Jan | Feb | Mar | Apr | May | Jun | Jul | Aug | Sep | Oct | Nov | Dec |
|---|-------|-------|-------|-------|-------|-------|-------|-------|-------|-------|-------|-------|
| ハム・ソーセージ・ベーコン支出金額/Hams and Sausages, and Bacons | 1,056 | 1,106 | 1,283 | 1,345 | 1,405 | 1,337 | 1,401 | 1,353 | 1,259 | 1,266 | 1,390 | 1,748 |
| 牛肉支出金額/Beef | 1,704 | 1,664 | 1,848 | 1,976 | 2,268 | 1,811 | 1,797 | 2,113 | 1,801 | 1,771 | 1,836 | 3,088 |
| 豚肉支出金額/Pork | 2,469 | 2,545 | 2,820 | 2,907 | 2,942 | 2,678 | 2,671 | 2,710 | 2,605 | 2,751 | 2,746 | 3,017 |
| 鶏肉支出金額/Chicken | 1,309 | 1,310 | 1,451 | 1,574 | 1,578 | 1,408 | 1,364 | 1,348 | 1,327 | 1,424 | 1,425 | 1,763 |

| 2021 | Jan | Feb | Mar | Apr | May | Jun | Jul | Aug | Sep | Oct | Nov | Dec |
|---|-------|-------|-----|-----|-----|-----|-----|-----|-----|-----|-----|-----|
| ハム・ソーセージ・ベーコン支出金額/Hams and Sausages, and Bacons | 1,144 | 1,126 | | | | | | | | | | |
| 牛肉支出金額/Beef | 1,920 | 1,670 | | | | | | | | | | |
| 豚肉支出金額/Pork | 2,817 | 2,594 | | | | | | | | | | |
| 鶏肉支出金額/Chicken | 1,469 | 1,359 | | | | | | | | | | |

〒141-6013 東京都品川区大崎2-1-1
ThinkPark Tower
日本ハム株式会社 広報IR部
電話: 03-4555-8024

Public & Investor Relations Department
NH Foods Ltd.
ThinkPark Tower
2-1-1 Osaki, Shinagawa-ku, Tokyo 141-6013
Tel: +81-3-4555-8024